

TRAILBOSS

Towbar Fitting Instructions To Suit Hyundai Santa Fe 05-2006-on Part Number QTHY180 Rating 2000Kg

WARNING:

1. Do not, drill, cut, weld or otherwise modify the towbar.
2. If you are using electric welding on a motor vehicle, **always** check that the vehicle is not equipped with electronic engine or instrument management equipment. Failure to do so could **destroy** any onboard computers. If in doubt, check with the vehicle's manufacturer.



CAUTION TWO PEOPLE ARE REQUIRED TO FIT THIS PRODUCT

- 1 Ensure all hardware items have been included.
- 2 Remove the bumper bar skin via.
 - a. Removing the 5 Philips head screws on the LH & RH wheel arch.
 - b. Remove 6 trim buttons from either side of the bumper which hold the mud flaps.
 - c. Remove 4 screws from the lower bumper.
 - d. Remove fog light from bumper and disconnect globe.
 - e. Remove 2 trim buttons from inside bumper.
 - f. Remove 2 Phillips head screws (1 per side) just below tail lights near boot opening.
- 3 Unplug rear fog lamp wiring from the main vehicle loom located on the passenger side of the rear impact beam.
- 4 Remove the impact beam and discard. Care should be taken to separate the wiring loom from the impact beam and retain.
- 5 Lower the driver and passenger side exhausts off the two rearmost muffler hangers and remove the heat shields.
- 6 Remove the towing hook from the chassis rail and discard. Note: The same bolts used for fastening up the towing hook need to be used for fastening up the side arm of the towbar.
- 7 Manoeuvre towbar to the chassis sub frame so that the holes in the side arms of the tow bar align with the captive nuts and holes in the chassis rails as shown in figures 1 & 2.
- 8 Fasten all hardware loosely as per diagram below then tighten all hardware to torque listing.
- 9 Reconnect the fog lamp wiring loom by laying the loom on top of the towbar and securing with the 4 cable ties provided as shown in figure 3.
- 10 Using a sharp knife, trim heat shield from the rearmost corner as shown in figure 5 and discard.
- 11 Trim the bumper as shown in the figure 6.
- 12 Refit bumper in reverse of steps 2 & 3.
- 13 M10 Nylocs are provided and should be secured to the bumper as shown in figure 4.

RECOMMENDED ASSEMBLY TORQUE LISTING

Diameter Grade 8.8 Bolt

	Nm
M6	9.5
M8	21.7
M10	43.4
M12	77.3
M16	189.8

TRAILBOSS

Towbar Fitting Instructions
Suit Hyundai Santa Fe 05-2006-on
Part Number QTHY180
Rating 2000Kg

Fig 1: shows side arms fitted to chassis



Fig 2: Shows chassis plate being fitted on.

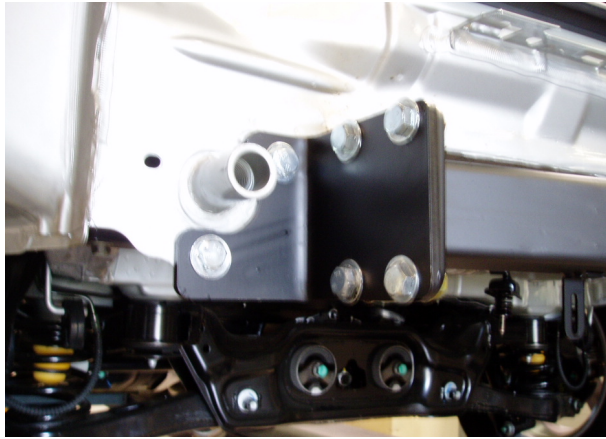


Fig 3: Shows fog lamp wiring being secured using cable ties.

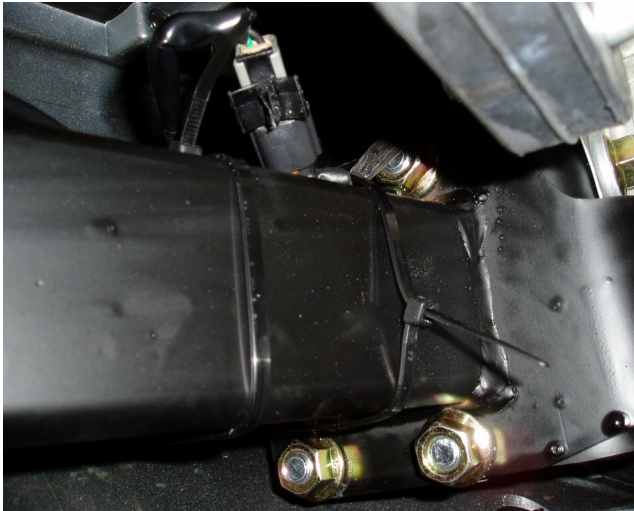


Fig 4: Shows lower bumper being attached.

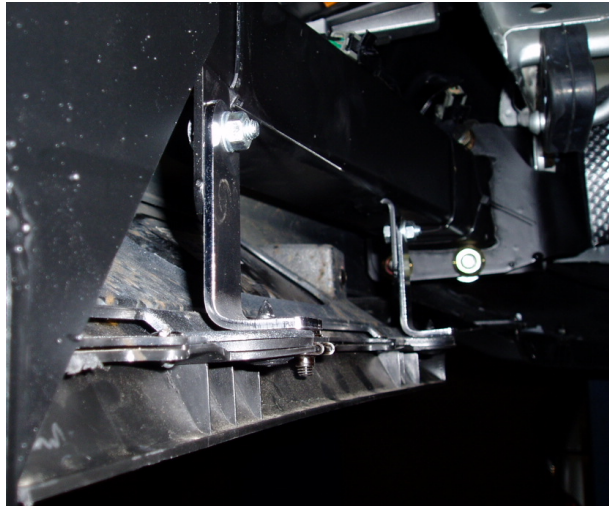
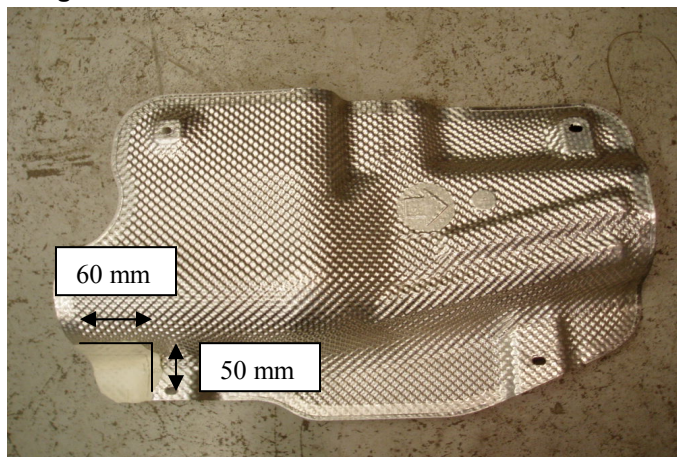


Fig 5: Shows the heat shields to be trimmed.



Towbar Fitting Instructions
 To Suit Hyundai Santa Fe 05-2006-on
 Part Number QTHY180
 Rating 2000Kg

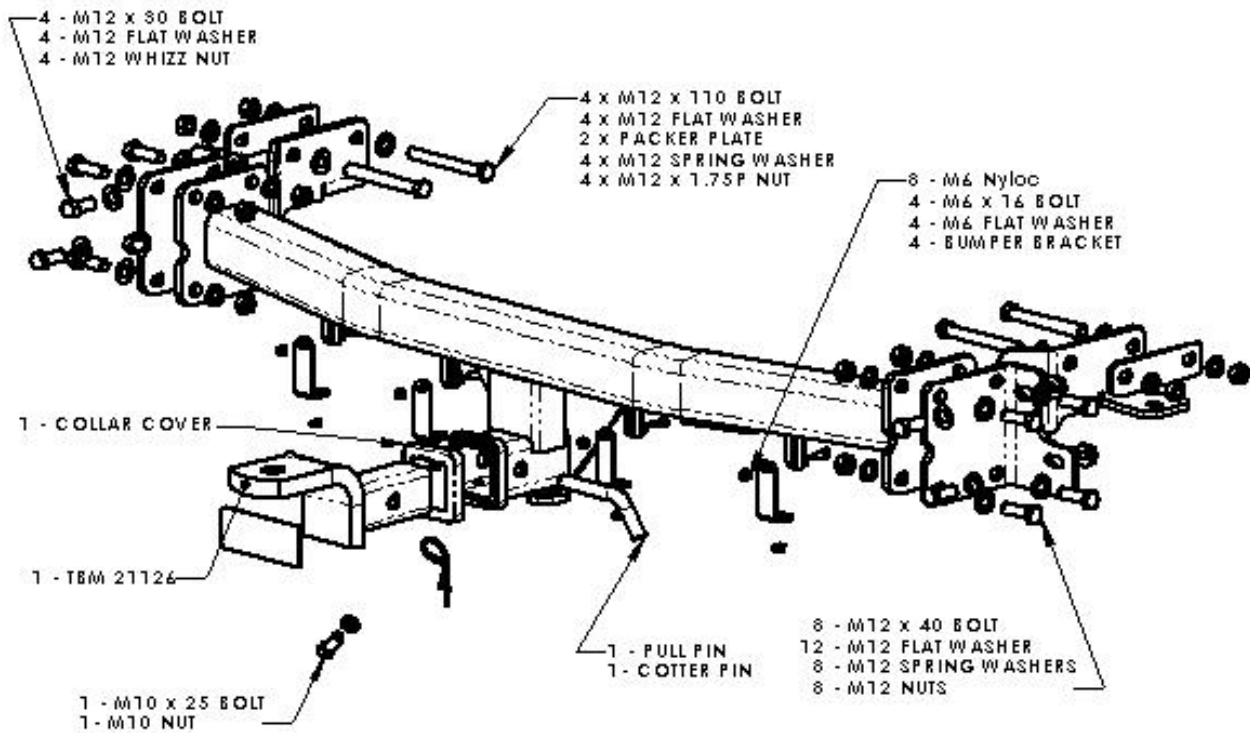
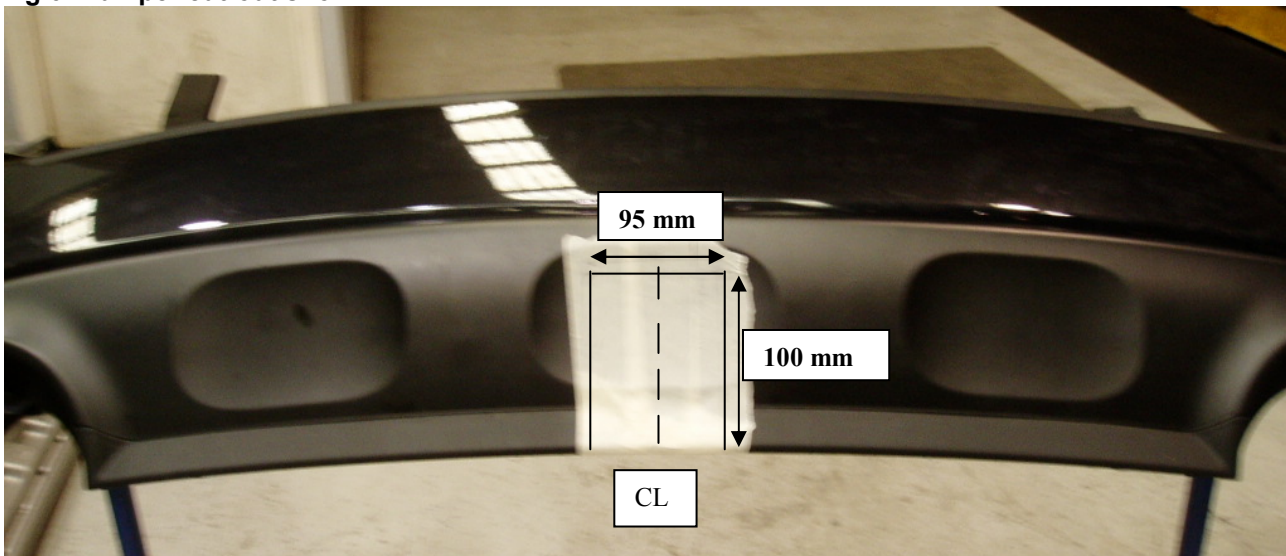


Fig 6: Bumper cut-out shown.



PLEASE NOTE: It is advised to remove lug from receiver box when not actually towing so as to produce a clear view of the vehicles registration plate if obscured, and to also provide increased departure angle.