

TRAILBOSS

Towbar Fitting Instructions
To Suit HYUNDAI SANTA FE 2009 – 12 / 2011
HYUNDAI SANTA FE 01 / 2012 On
Part Number QTHY253L
Rating 2000 kg

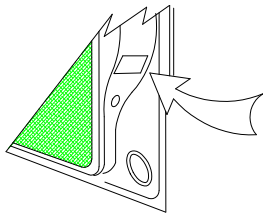
PLEASE ENSURE THAT ALL INSTRUCTIONS ARE UNDERSTOOD PRIOR TO FITMENT
PLACE THESE INSTRUCTIONS IN THE VEHICLES GLOVEBOX AFTER INSTALLATION IS COMPLETE

WARNING:

1. Do not, drill, cut, weld or otherwise modify the tow bar.
2. If you are using electric welding on a motor vehicle, **always** check that the vehicle is not equipped with electronic engine or instrument management equipment. Failure to do so could **destroy** any onboard computers. If in doubt, check with the vehicle's manufacturer.

General:

1. Ensure all hardware items have been included refer to assembly diagram.
2. It is recommended that the instructions are read through and completely understood before making any attempt to fit this product.
3. Be wary of any changes to vehicle designs or other accessories that may conflict with the installation of this product.
4. Before drilling ensure that the area is clear of fuel, electrical & other components.
5. All holes drilled into the body panels shall have all burrs & swarf removed then coated with a suitable rust preventative paint.
6. For vehicles that require the bumper to be cut. Ensure cut out area is in correct position on the vehicle prior to cutting the bumper.
7. The high tensile fasteners supplied with this product were used to achieve the specified rating. If replacement is required ensure that fasteners of the same rating & quality are used. Contact an authorized **Trailboss** dealer if further information is required.
8. Ensure that all hardware is fastened to torque list below check fasteners on regular basis.
9. Tow bar load rating sticker provided with this product shall be conspicuously located on inside rear end of the driver's door. **(See diagram below).**
10. Trailboss recommends that you check your tow ball to ensure that it complies with the Australian standards **AS 4177.2.**
11. **PLEASE NOTE:** It is advised to remove your lug or tbn when not actually towing so as to produce a clear view of the vehicles registration plate if obscured, and to also provide maximum available departure angle



Place load rating sticker
inside driver's door here

FOR TOWING PURPOSES ONLY

For towing capacity details please refer to vehicle owner's manual
or to the manufacturer. Overloading can void your warranties.

RECOMMENDED ASSEMBLY TORQUE LISTING

Diameter	Grade 8.8 Bolt
M6	9.5 Nm
M8	21.7 Nm
M10	43.4 Nm
M12	77.3Nm
M14	146 Nm
M16	189.8 Nm

Tow bar Maintenance and Care.

Trailboss recommends that bolt torque's, as listed below, are routinely and regularly inspected and checked for correct tension. Replace any worn or defective parts.

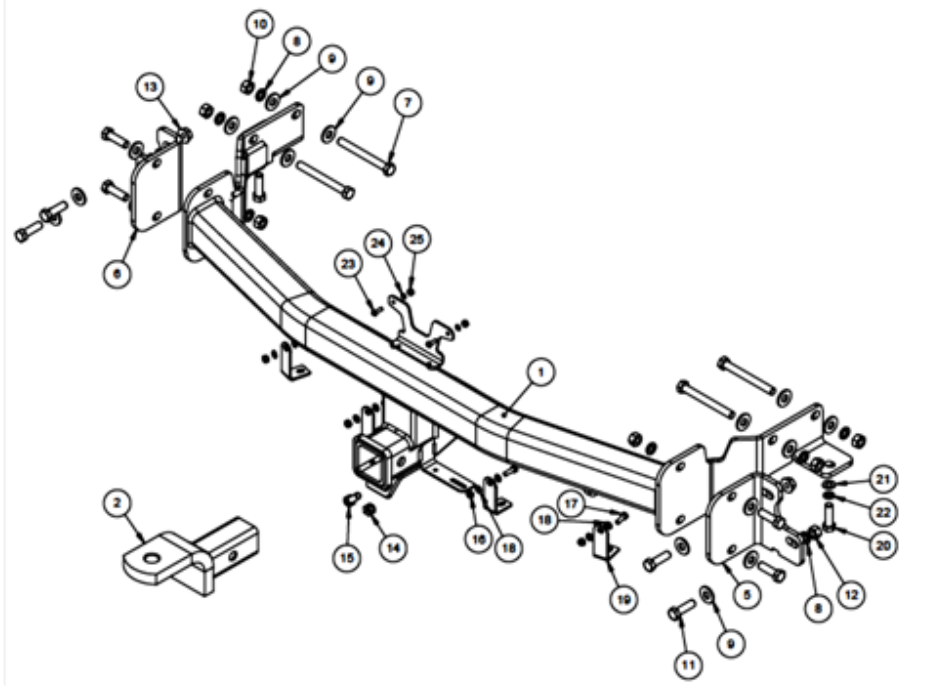
We recommended to remove Tow Ball Mounts (TBM' or lugs) when not being used for any considerable length of time. So as to avoid injury, when not towing it is suggested that the tongue, Pull Pin and R-clip are removed then stored in a safe, clean and dry place, away from excessive moisture.

Hitch Pull Pins and spring "R" clips are regularly checked for proper installation. Replace any worn or defective parts.

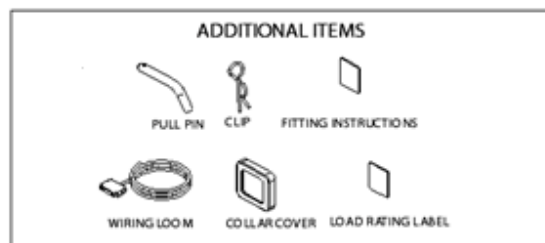
TRAILBOSS

Towbar Fitting Instructions
 To Suit HYUNDAI SANTA FE 2009 – 12 / 2011
 HYUNDAI SANTA FE 01 / 2012 On
 Part Number QTHY253L
 Rating 2000 kg

PLEASE ENSURE THAT ALL INSTRUCTIONS ARE UNDERSTOOD PRIOR TO FITMENT
 PLACE THESE INSTRUCTIONS IN THE VEHICLES GLOVEBOX AFTER INSTALLATION IS COMPLETE



QTY.	DESCRIPTION	ITEM NO.
1	WELDED ASSY	1
1	TBM	2
1	BOLT PACK	3
1	Bag CK 250x350 Clear	4
1	DRIVER SIDE BRACKET	5
1	PASSENGER SIDE BRACKET	6
4	BOLT M12-1.25x110 GR8.8	7
10	Wshr spring ft sec M12x4.0x2.5mm z/p	8
16	WASHER M12x28.8x3mm	9
4	M12x1.25 HEX NUT PC8	10
8	BOLT M12-1.75x40 GR8.8	11
6	M12x1.75 HEX NUT PC8	12
2	M12 x 1.75P WHIZZ NUT	13
1	HEX NUT M10x1.5	14
1	BOLT M10-1.50 x 25	15
4	M8 NYLOC	16
4	SCREW SET H/T GR8.8 HEX TRIV.ZINC 6 x 20	17
8	M8 FLAT WASHER	18
4	BUMPER BRACKET	19
2	M10 x 1.25P x 30 BOLT	20
2	M10 FLAT WASHER 21 x 1.6mm	21
2	M10 X 3.5 X 2.2 SPRING WSHR	22
2	SCREW PAN XR MTS M5 - 0.8 x 16mm z/p	23
2	Washer M5 x 10 x 1 Z/P	24
2	NUT HX M5-0.8 Z/P	25
10	Cable Tie GT300 UV	26





Towbar Fitting Instructions
To Suit HYUNDAI SANTA FE 2009 – 12 / 2011
HYUNDAI SANTA FE 01 / 2012 On
Part Number QTHY253L
Rating 2000 kg

PLEASE ENSURE THAT ALL INSTRUCTIONS ARE UNDERSTOOD PRIOR TO FITMENT
PLACE THESE INSTRUCTIONS IN THE VEHICLES GLOVEBOX AFTER INSTALLATION IS COMPLETE

STEPS TO FIT TOWBAR

1. Remove the Rear Bumper from the vehicle via the following steps:



Position the vehicle on to a safe working height on the hoist before commencing fitment.

- (a) Remove scrivenets x 4 from underneath the bumper.
- (b) Remove scrivenets x 3 from sides.
Note: Repeat the step for passenger side.
- (c) Remove wheel arch screws x 3 and bolt x 1.
Note: Repeat the step for passenger side.
- (d) Remove screw x 2 from inside the tailgate.
Note: Repeat the step for passenger side.
- (e) Remove scrivenets x 2 from inside the bumper, behind the reflectors on both sides.
- (f) Flex the bumper out from the sides and pull rearward.
- (g) Remove the impact beam, carefully removing all the wiring and the passive entry sensor antenna (if applicable) attached to it.
- (h) Remove the exhaust hangers x 3 (1 on the rear and 2 on the front) on both sides.
- (i) Cut the heat shield as shown in the illustration on page 4
- (j) Locate the towbar on the vehicle, using the relevant fasteners, as shown on page 2.
- (k) Torque the towbar and the back plate brackets to the torque requirements mentioned on page 1.
- (l) Cut the bumper, as shown in the illustration on page 4.
- (m) Refit the exhaust muffler hangers and the bumper in the reverse order.
- (n) Affix the load rating label, as shown on page 1.

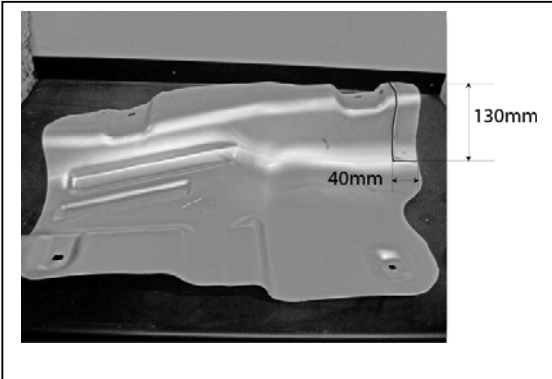
TRAILBOSS

Towbar Fitting Instructions
To Suit HYUNDAI SANTA FE 2009 – 12 / 2011
HYUNDAI SANTA FE 01 / 2012 On
Part Number QTHY253L

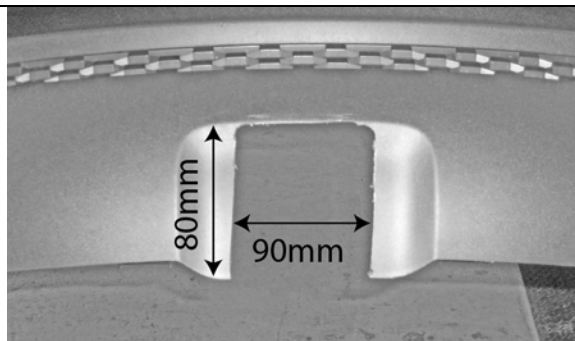
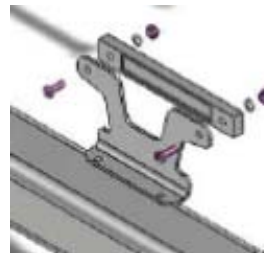
Rating 2000 kg

PLEASE ENSURE THAT ALL INSTRUCTIONS ARE UNDERSTOOD PRIOR TO FITMENT
PLACE THESE INSTRUCTIONS IN THE VEHICLES GLOVEBOX AFTER INSTALLATION IS COMPLETE

Heat Shield cut out –



Re-connect the passive entry rear sensor. (If applicable) to towbar sensor bracket. Secure with screw, washer and nuts supplied.



– Bumper cut-out illustration.
For models 2009 – 12 / 2011

1. Cut the bumper, as shown in the illustration

**CUT OUT - For models ranging
2009 to 12 / 2011**

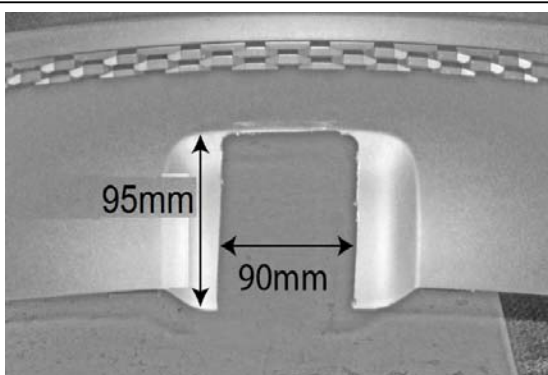


Figure 12 – Bumper cut-out illustration.
For models 01 / 2012 On

2. Cut the bumper, as shown in the illustration

**CUT OUT - For models ranging
01 / 2012 On**

3. Refit the exhaust muffler hangers and the bumper in reverse order.
4. Affix the load rating label, as shown on page 1.



Wiring Loom Fitting Instructions
To Suit Hyundai Santa Fe
Part Number 100228-WL

Wiring Loom Installation Instructions

Hyundai Santa Fe
Part No: 100228-WL

Tail Harness Length Required: 1800mm
RPA Override Switch Part No: 04848 (If Fitted)

Wiring Loom Installation Time: Approx 40 Mins



Wiring Loom Fitting Instructions
To Suit Hyundai Santa Fe
Part Number 100228-WL

1. Remove the rear bumper fascia.
2. Remove all the required trims to gain access to the RHS tail light connectors (including rear RHS seat for 7 seater variant). Remove enough fasteners from the LHS luggage trim to gain access to the tail lights.
3. Outside the rear of the vehicle, mount the Tail Harness (tail length 1800mm) to the towbar mounting bracket using M4 fasteners (not supplied). Route the Tail Harness across the towbar towards the RHS of the vehicle.
4. Locate the vehicle grommets from the RHS rear quarter of the vehicle. Remove the LHS grommet and route the tail harness in. Adjust the tail harness grommet ensuring it is seated correctly into the vehicle grommet hole then secure harness grommet with a cable tie (not supplied).
5. Inside the vehicle RHS rear quarter area, retrieve the tail harness.
6. Disconnect the vehicle RHS tail light connectors and patch the trailer patch harness (100228-WL) in between. Secure the harness ground ring terminal into place by drilling in a tech screw (not supplied) into the sheet metal.
7. Above the RHS tail light connector area, locate the exposed vehicle harness wires. Ensure to use a multimeter to locate the BLUE reverse wire.
8. Secure the trailer patch BLACK wire terminal onto the easy tap. Secure the ezy tap onto the vehicle harness BLUE reverse wire.
9. Route the Trailer Patch Harness LHS connectors towards the LHS tail light connectors. Disconnect the LHS tail light connectors and patch the trailer patch harness in between.
10. Connect the trailer patch harness to the tail harness.
11. Test the Trailer socket using a light board or multi-meter.
12. Secure the all harnesses using cables ties (not supplied).
13. Refit all removed parts and secure all fasteners.
14. Place instructions in glove box after fitment.