

TRAILBOSS

Towbar Fitting Instructions To Suit **HYUNDAI i40 SEDAN** Part Number **QTHY261L** Rating **1500/150 kg**

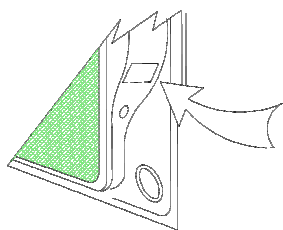
PLACE THESE INSTRUCTIONS IN THE VEHICLE'S GLOVEBOX AFTER INSTALLATION IS COMPLETED

WARNING:

1. Do not, drill, cut, weld or otherwise modify the tow bar.
2. If you are using electric welding on a motor vehicle, **always** check that the vehicle is not equipped with electronic engine or instrument management equipment. Failure to do so could **destroy** any onboard computers. If in doubt, check with the vehicle's manufacturer.
3. The high tensile fasteners supplied with this product were used to achieve the specified rating. If replacement is required ensure that fasteners of the same rating & quality are used. Contact an authorised **Trailboss** dealer if further information is required.
4. If TBM is used in inverted position tow ball may make contact with rear tailgate when lowered, which could cause damage.

General:

1. Ensure all hardware items have been included refer to assembly diagram.
2. It is recommended that the instructions are read through and completely understood before making any attempt to fit this product.
3. Be wary of any changes to vehicle designs or other accessories that may conflict with the installation of this product.
4. Before drilling ensure that the area is clear of fuel, electrical & other components.
5. All holes drilled into the body panels shall have all burrs & swarf removed then coated with a suitable rust preventative paint.
6. For vehicles that require the bumper to be cut. Ensure cut out area is in correct position on the vehicle prior to cutting the bumper.
7. The high tensile fasteners supplied with this product were used to achieve the specified rating. If replacement is required ensure that fasteners of the same rating & quality are used. Contact an authorized **Trailboss** dealer if further information is required.
8. Ensure that all hardware is fastened to torque list below check fasteners on regular basis.
9. Tow bar load rating sticker provided with this product shall be conspicuously located on inside rear end of the driver's door. **(See diagram below).**
10. Trailboss recommends that you check your tow ball to ensure that it complies with the Australian standards **AS 4177.2**.
11. **PLEASE NOTE:** It is advised to remove your lug or tbn when not actually towing so as to produce a clear view of the vehicles registration plate if obscured, and to also provide maximum available departure angle
12. Pull Pin must be fit in down position.



Place load rating sticker
inside driver's door here

FOR TRAILER TOWING PURPOSES ONLY
For towing capacity details please refer to vehicle owner's manual or to the manufacturer. Overloading can void your warranties.

RECOMMENDED ASSEMBLY TORQUE LISTING

<u>Diameter</u>	<u>Grade 8.8 Bolt</u>
M6	9.5 Nm
M8	21.7 Nm
M10	43.4 Nm
M12	77.3Nm
M14	146 Nm
M16	189.8 Nm

Tow bar Maintenance and Care.

Trailboss recommends that bolt torque's, as listed below, are routinely and regularly inspected and checked for correct tension. Replace any worn or defective parts.

We recommended to remove Tow Ball Mounts (TBM's, tongues or lugs) when not being used for any considerable length of time.

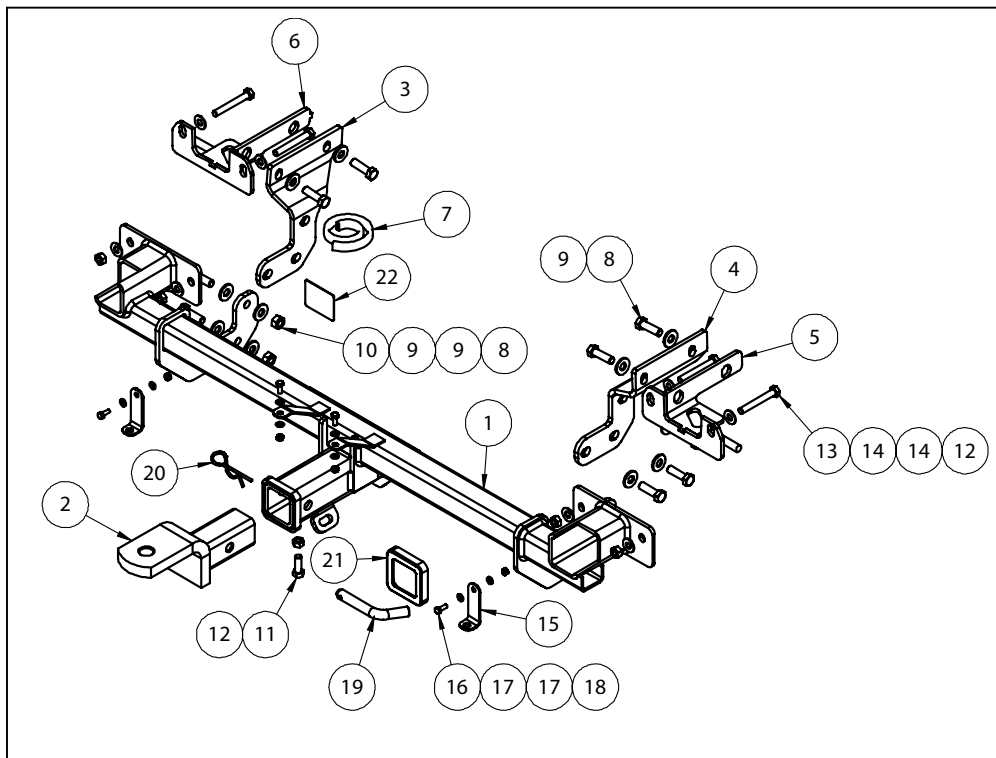
So as to avoid injury, when not towing it is suggested that the tongue, Pull Pin and R-clip are removed then stored in a safe, clean and dry place, away from excessive moisture.

Hitch Pull Pins and spring "R" clips are regularly checked for proper installation. Replace any worn or defective parts.

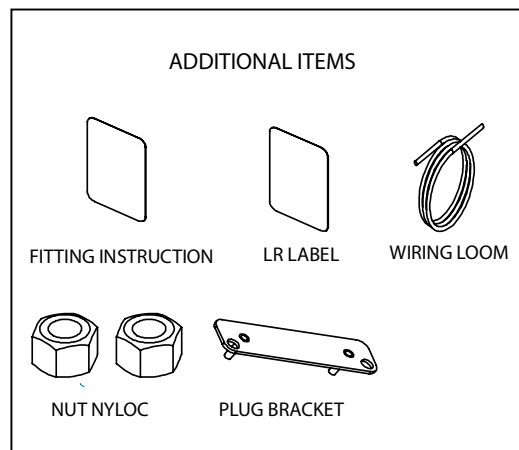
TRAILBOSS

Towbar Fitting Instructions
 To Suit **HYUNDAI i40 SEDAN**
 Part Number **QTHY261L**
 Rating **1500/150 kg**

PLACE THESE INSTRUCTIONS IN THE VEHICLE'S GLOVEBOX AFTER INSTALLATION IS COMPLETED



QTY	DESCRIPTION	ITEM NO
1	WELDED ASSY	1
1	TBM ASSY	2
1	SIDE ARM LEFT	3
1	SIDE ARM RIGHT	4
1	RHS CHASSIS SUPPORT BRACKET	5
1	LHS CHASSIS AUPPORT BRACKET	6
1	BUBPER TRIM PINCH WELD 400mm	7
10	BOLT M12-1.25x40	8
16	WASHER FLAT M12	9
6	HEX NUT M12x1.25	10
1	SET SCREW HEX HD M10x30x1.5P	11
5	HEX NUT M10x1.5	12
4	BOLT M10x75x1.5P	13
8	WASHER FLAT M10x23x2 Z/P	14
2	BUMPER BRACKET	15
4	SET SCREW M6x16	16
8	WASHER FLAT M6x1612.5x1.2	17
4	NYLOC NUT M6-1.00 Z/P	18
1	PULL PIN	19
1	R CLIP	20
1	HITCH BOX COLLAR COVER	21
1	ACRYLIC COMPLIANCE PLATE	22





Towbar Fitting Instructions
To Suit **HYUNDAI i40 SEDAN**
Part Number **QTHY261L**
Rating **1500/150 kg**

PLACE THESE INSTRUCTIONS IN THE VEHICLE'S GLOVEBOX AFTER INSTALLATION IS COMPLETED

INSTRUCTION:

1. Open Tail gate, Remove tabs and release two Screws each side from Tail Lights.
2. Remove the Tail Lights and disconnect the indicator Globes. Dislodge the Connector Grommet and disconnect the Tail Light connector.
3. Release one Screw and one Connector from the Tail Lights Cavity. Repeat on the other side.
4. Release three Screws from the Wheel Arch on each side. Release two Scrivets from the Underneath the bottom fascia.
5. Remove three Screws and three Scrivets from the underneath the tray.
6. Remove two Nuts from the Rear Muffler Hanger Bracket .Remove the Rear Muffler Hanger Bracket and discard. Release two Nuts from the Exhaust Flange Joint. Remove the Rear Muffler. Release four Nuts from the Exhaust Heat Shield.
Note: Exhaust Heat Shield will have to be cut before re-installation.
7. Release four Bolts from underneath the vehicle Rear Panel. Carefully dislodge the Rear Bumper Bar Assembly. Disconnect the Wiring Harness Connector. Disconnect the reverse park sensor if fitted. Remove the Bumper Bar Assembly. Release five Scrivets, keep two and discard the rest from the reinforcement beam. Release Screws and disconnect the Smart Key Antenna. Remove the discard the reinforcement beam.
8. Loosely secure the Chassis Support Bracket and one spacer plate to the Rear Vehicle Panel using two M10 Bolts and two M10 Washers. Repeat on the other side.
9. Loosely secure the Back Panel Bracket to the Pre-Inserted Fasteners using two M10 Washers and two M10 Nuts. Repeat on the other side.
10. Loosely secure the Chassis Side Arm to Chassis Support Bracket and the side of the Chassis Rail, using two M12 Bolts and two M12 Washers. Insert a screwdriver into the drilled hole in the Chassis Rail to prevent the pre -inserted Tapped Plate from rotating when tightening. Loosely secure the Chassis Arm to the bottom of the Chassis Rail using one black M10 Bolt, one M10 Washer and Pre-inserted Tapped Plate. Repeat on the other side.
11. Mount the Smart Key Antenna to the Rear Sensor Holder using two M6 Bolts, four M6 Washers and two M6 Nyloc Nuts. Reconnect the Wiring Harness connector to the connector of the Vehicle. Attach the Wiring Harness to the main Bar Assembly using the cable ties provided. Mount the Bumper Bracket to the main Towbar assembly using one M6 Bolt, two M6 Washers and one M6 Nyloc Nut Note: All M6 Fasteners are Torque to 10 Nm at this step. Repeat on the other side.
12. Mount the Smart Key Sensor (if fitted) using two M6 Bolts, Washers and Nylon Nuts .Reconnect the Wiring Harness Connector. Torque all bolts to the Specified Torque on page1.
13. Cut the Heat shield and the Bumper bar on.
14. Refit the exhaust to the muffler hanger on the chassis Bracket.
15. Refit the Bumper assembly and the tail lights in the reverse order.
16. Attach Hitch Box Collar. Secure the TBM with Pull pin and R clip. Attach M10 Bolt and Nut to the hitch assembly.



Wiring Loom Fitting Instructions
To Suit Hyundai i40 Tourer
Part Number 100725-WL

Wiring Loom Installation Instructions

Hyundai i40 Tourer / i40 Sedan
Part No: 100725-WL

Tail Harness Length Required: 1200mm

Wiring Loom Installation Time: Approx. 50 Mins

Hyundai i40 Tourer – Pages 2 – 4
Hyundai i40 Sedan – Pages 5 - 6

Note: If factory OEM RPA is fitted, Trouble Code will be logged if disabled.



Wiring Loom Fitting Instructions
To Suit Hyundai i40 Tourer
Part Number 100725-WL

1. In the luggage compartment, remove the cargo net by first removing the two upper hooks and pressing the lower button.
2. Remove the cargo blind by first releasing the two levers located on both the upper RHS and LHS of the cargo blind.
3. Remove the floor carpet cover and fold the rear passenger seats forward.
4. On the RHS of the luggage compartment, remove the storage divider.
5. Remove the front section of the floor carpet.
6. On the rear luggage compartment, remove the centre storage tubs.
7. On the rear luggage compartment, remove the rear trim by first removing the two fir tree clips.
8. On the RHS, in the luggage compartment, remove the compartment rail by first releasing the three 12mm bolts.

Note: The adjustable anchor slugs may need to be moved to gain access to the 12mm bolts.

Repeat for the LHS.

9. On the RHS of the luggage compartment, dislodge the compartment light and disconnect both the light connector and the 12V accessory connector.
10. Dislodge the RHS luggage compartment and pull towards the middle of the vehicle.
11. On the rear quarter of the RHS luggage compartment, remove the existing grommet and drill out a hole to Ø30mm.
12. Ensure to file any rough or sharp edges and spray with rust inhibitor.
13. On the LHS of the luggage compartment, dislodge the compartment light and disconnect the light connector.
14. Dislodge the LHS luggage compartment trim and pull towards the centre of the vehicle.
15. Inside the vehicle cabin, on the rear passenger side, remove the passenger's seat base by first removing the two 12mm hex head bolts.
16. On the RHS of the rear passenger side, remove the rear scuff plate by first removing the one Phillip head screw.
17. On the RHS of the rear passenger side, remove the 12mm hex head bolt securing the seat bolster.



Wiring Loom Fitting Instructions
To Suit Hyundai i40 Tourer
Part Number 100725-WL

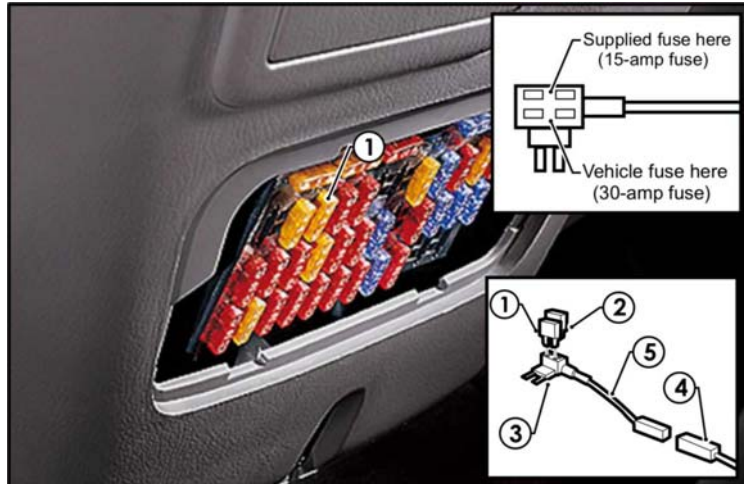
18. At the front of the driver's RHS, remove the side scuff plate.
19. Carefully dislodge the bonnet release lever and remove the trim clip securing the kick panel.
20. Remove the driver's side kick panel.
21. Inside the vehicle cabin, on the RHS, remove the 'B' pillar trim.
22. Underneath on the driver's lower dash, remove the dash fuse panel access trim.
23. On the LHS of the luggage compartment, disconnect the tail light connector and connect the trailer patch (P/No: 100725-WL) in between.
24. Using a multimeter, locate the vehicle 'BLUE' reverse signal wire.
25. Following the table below, connect the ezy-tap to the vehicle 'BLUE' reverse signal wire.

Function	Trailer Patch	Vehicle Connector
REVERSE	BLACK	BLUE

26. Connect the trailer patch terminal to the ezy-tap.
27. Route the trailer wiring harness across the rear luggage compartment towards the RHS tail light connectors.
28. On the RHS of the luggage compartment, disconnect the tail light connectors and connect the trailer patch in between.
29. Secure the trailer wiring harness ground ring terminal to the existing vehicle ground point using the existing 10mm bolt.
30. Route the power harness from the luggage compartment, past the RHS of the rear passenger's side, towards the front of the vehicle.
31. Ensure to cable tie (not supplied) the power harness to the existing vehicle harness.
32. Continue routing the power harness through the 'B' pillar trim, towards the driver's RHS.
33. Continue routing the power harness along the main vehicle harness into the fuse box, which is located on the lower dash on the RHS of the driver's side.

Wiring Loom Fitting Instructions To Suit Hyundai i40 Tourer Part Number 100725-WL

34. Remove the 30-amp fuse from the fuse panel.
35. Slot in the supplied 15-amp fuse into the upper slot of the add-a-fuse and connect the 30-amp fuse into the lower slot of the add-a-fuse.



36. Insert the add-a-fuse into the now vacant fuse slot.
37. Connect the trailer patch harness to the add-a-fuse harness.
38. From the outside of the vehicle, mount the trailer socket onto the towbar mounting bracket using M4 fasteners (not supplied).
39. Route the tail harness (1200mm tail length) across the towbar towards the RHS of the vehicle and up through the previously drilled out grommet hole.
40. In the luggage compartment, connect the tail harness 8-way connector to the trailer harness mating 8-way connector.
41. Test the Trailer Harness function using a Light Board or multimeter.
42. Secure all Harnesses using cables ties (not supplied).
43. Re-fit all removed parts and secure all fasteners, ensuring there are no squeaks or rattles.
44. Place the instructions in the glove box after fitment.



Wiring Loom Fitting Instructions
To Suit Hyundai i40 Tourer
Part Number 100725-WL

The following step is for Hyundai i40 Sedan models only. For the Hyundai i40 Tourer models, please refer to page 2.

1. In the luggage compartment, remove the floor carpet.
2. Remove the rear trim by first removing the four fasteners.
3. Remove the RHS luggage compartment trim, by first removing the three clips, the cargo hook and one fastener.

Repeat for the LHS.

4. Inside the vehicle cabin, remove the two bolts on the rear seat cushions.
5. Remove the lower cushion base.
6. On the RHS of the vehicle, remove the rear passenger's scuff plate.
7. Remove the RHS scuff plate on the driver's side.
8. Remove the kick panel trim by first removing the fasteners.
9. On the RHS rear quarter panel, drill out the existing grommet hole to Ø30mm.
10. File any rough or sharp edges and spray with rust inhibitor.

Note: If grommet is occupied, drill a Ø30mm next to the existing grommet hole.

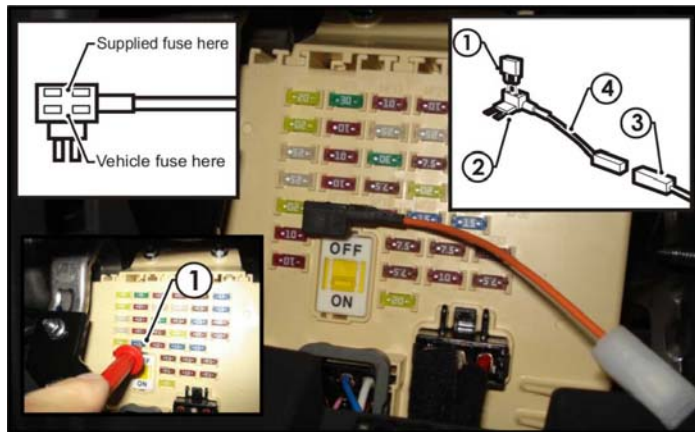
11. Remove the fuse access panel cover underneath the driver's side.
12. On the LHS of the luggage compartment, disconnect the tail light assembly connectors and connect the trailer patch (100725-WL) in between.
13. Following the table below, connect the ezy-tap onto the blue reverse wire, and then connect the trailer patch terminal to the ezy-tap.

Function	Trailer Patch	Vehicle Connector
REVERSE	BLACK	BLUE

14. Route the trailer harness along the rear luggage compartment panel, towards the RHS of the vehicle.
15. On the RHS of the luggage compartment, disconnect the tail light assembly connectors and connect the trailer patch connectors in between.
16. Connect the ground ring terminal on to the vehicle grounding point.
17. Route the 'ORANGE' power wire, around the wheel arch, towards the inside of the vehicle cabin.

Wiring Loom Fitting Instructions To Suit Hyundai i40 Tourer Part Number 100725-WL

18. Secure the power wire to the existing vehicle harness using cable ties (not supplied).
 19. Following the existing vehicle harness, continue routing the 'ORANGE' power wire along the RHS towards the front of the vehicle.
 20. Continue routing the 'ORANGE' power wire on the RHS of the vehicle following the main vehicle harness towards the fuse panel.
 21. On the fuse panel, remove the indicated 15Amp fuse.
 22. Slot the previously removed 15Amp fuse into the lower slot of the add-a-fuse.
 23. Insert the add-a-fuse into the now vacant slot on the fuse panel as shown.
- Note: Ensure to place add-a-fuse in the correct orientation.**
24. Connect the trailer patch harness to the add-a-fuse harness connector.



25. From the outside of the vehicle, mount the trailer socket on the towbar mounting bracket using M4 fasteners (not supplied).
26. Route the tail harness (tail length 1200mm) across the towbar, towards the RHS of the vehicle and up through the previously drilled out grommet hole.
27. In the luggage compartment, connect the tail harness connector to the trailer patch harness mating connector.
28. Test the Trailer Harness function using a Light Board or multimeter.
29. Secure all Harnesses using cables ties (not supplied).
30. Re-fit all removed parts and secure all fasteners, ensuring there are no squeaks or rattles.
31. Place the instructions in the glove box after fitment.