

# TRAILBOSS

## Towbar Fitting Instructions To Suit **HYUNDAI KONA OS CL4** Part Number **QTHY266L** Rating **1300/130 kg**

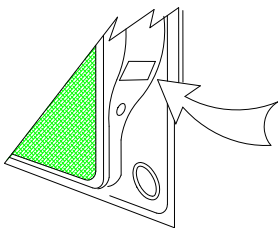
PLACE THESE INSTRUCTIONS IN THE VEHICLE'S GLOVEBOX AFTER INSTALLATION IS COMPLETED

### **WARNING:**

1. Do not, drill, cut, weld or otherwise modify the tow bar.
2. If you are using electric welding on a motor vehicle, **always** check that the vehicle is not equipped with electronic engine or instrument management equipment. Failure to do so could **destroy** any onboard computers. If in doubt, check with the vehicle's manufacturer.
3. The high tensile fasteners supplied with this product were used to achieve the specified rating. If replacement is required ensure that fasteners of the same rating & quality are used. Contact an authorised **Trailboss** dealer if further information is required.
4. If TBM is used in inverted position tow ball may make contact with rear tailgate when lowered, which could cause damage.

### **General:**

1. Ensure all hardware items have been included refer to assembly diagram.
2. It is recommended that the instructions are read through and completely understood before making any attempt to fit this product.
3. Be wary of any changes to vehicle designs or other accessories that may conflict with the installation of this product.
4. Before drilling ensure that the area is clear of fuel, electrical & other components.
5. All holes drilled into the body panels shall have all burrs & swarf removed then coated with a suitable rust preventative paint.
6. For vehicles that require the bumper to be cut. Ensure cut out area is in correct position on the vehicle prior to cutting the bumper.
7. The high tensile fasteners supplied with this product were used to achieve the specified rating. If replacement is required ensure that fasteners of the same rating & quality are used. Contact an authorized **Trailboss** dealer if further information is required.
8. Ensure that all hardware is fastened to torque list below check fasteners on regular basis.
9. Tow bar load rating sticker provided with this product shall be conspicuously located on inside rear end of the driver's door. **(See diagram below).**
10. Trailboss recommends that you check your tow ball to ensure that it complies with the Australian standards **AS 4177.2**.
11. **PLEASE NOTE:** It is advised to remove your LUG or TBM when not actually towing so as to produce a clear view of the vehicles registration plate if obscured, and to also provide maximum available departure angle



Place load rating sticker  
inside driver's door here

**FOR TRAILER TOWING PURPOSES ONLY**  
For towing capacity details please refer to vehicle owner's manual or to the manufacturer. Overloading can void your warranties.

### **RECOMMENDED ASSEMBLY TORQUE LISTING**

Diameter      Grade 8.8 Bolt

M6	9.5 Nm
M8	21.7 Nm
M10	43.4 Nm
M12	77.3Nm
M14	146 Nm
M16	189.8 Nm

### **Tow bar Maintenance and Care.**

Trailboss recommends that bolt torque's, as listed below, are routinely and regularly inspected and checked for correct tension. Replace any worn or defective parts.

We recommended to remove Tow Ball Mounts (TBM's, tongues or lugs) when not being used for any considerable length of time.

So as to avoid injury, when not towing it is suggested that the tongue, Pull Pin and R-clip are removed then stored in a safe, clean and dry place, away from excessive moisture.

Hitch Pull Pins and spring "R" clips are regularly checked for proper installation. Replace any worn or defective parts.

### **Cequent Customer Service**

Ph: 1800 812 017 Fax: 03 9898 3299

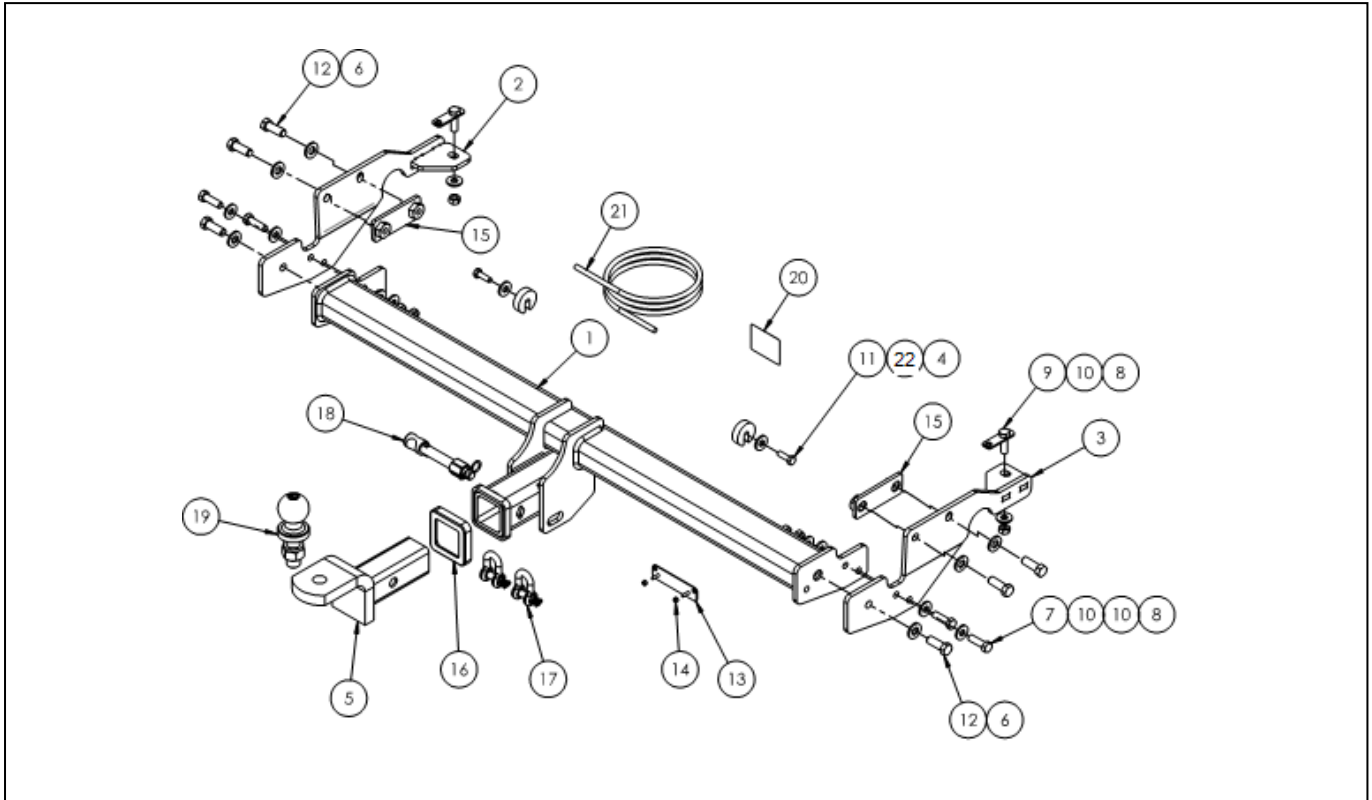
Email: [info@cequent.com.au](mailto:info@cequent.com.au)

Post: PO Box 4050, Dandenong South VIC 3175

# TRAILBOSS

Towbar Fitting Instructions  
 To Suit **HYUNDAI KONA OS CL4**  
 Part Number **QTHY266L**  
 Rating **1300/130 kg**

PLACE THESE INSTRUCTIONS IN THE VEHICLE'S GLOVEBOX AFTER INSTALLATION IS COMPLETED



ITEM	DESCRIPTION	QTY
1	HYUNDAI KONA WELDED ASSEMBLY	1
2	SIDE ARM LHS	1
3	SIDE ARM RHS	1
4	BRAKE LINE SPACER PLATE	2
5	TRAILER BALL MOUNT	1
6	WASHER PLAIN 1/2X1-1/8X16G	6
7	SETSCREW HXHD M10X35X1.5P G8.8	4
8	HEX NUT M10x1.5	6
9	T BOLT ASSEMBLY	2
10	WASHER PLAIN M10 X 25 X 3	10
11	SETSCREW M8 x 25 Gr 8.8	2

ITEM	DESCRIPTION	QTY
12	M12 x 35 1.75P SET SCREW Gr 8.8	6
13	VE PLUG BRACKET	1
14	NUT NYLON LOCK HEX HD M4X0.7P	2
15	NUT PLATE	2
16	HITCH BOX COLLAR COVER	1
17	10mm "D" SHACKLE	2
18	SILENT HITCH PIN - SILVER	1
19	50mm TOWBALL	1
20	ACRYLIC COMPLIANCE LABEL	1
21	WIRING LOOM	1
22	WASHER PLAIN M8 X 22 X 3	2

**Cequent Customer Service**  
 Ph: 1800 812 017 Fax: 03 9898 3299  
 Email: [info@cequent.com.au](mailto:info@cequent.com.au)  
 Post: PO Box 4050, Dandenong South VIC 3175

# TRAILBOSS

Towbar Fitting Instructions  
To Suit **HYUNDAI KONA OS CL4**  
Part Number **QTHY266L**  
Rating **1300/130 kg**

PLACE THESE INSTRUCTIONS IN THE VEHICLE'S GLOVEBOX AFTER INSTALLATION IS COMPLETED

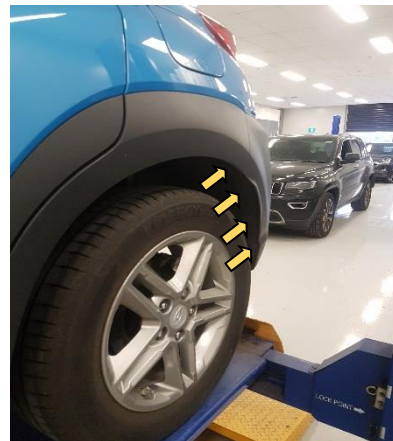
1. Release tailgate and remove 1 x screw along top edge of bumper on LHS of vehicle.

Repeat for RHS.



2. Remove 3 x screws and 1 x hex head screw from wheel arch on LHS.

Repeat for RHS.



3. Remove 3 x scrivenets from underside of bumper on RHS and 2 x scrivenets from LHS.



**Cequent Customer Service**  
Ph: 1800 812 017 Fax: 03 9898 3299  
Email: [info@cequent.com.au](mailto:info@cequent.com.au)  
Post: PO Box 4050, Dandenong South VIC 3175

# TRAILBOSS

Towbar Fitting Instructions  
To Suit **HYUNDAI KONA OS CL4**  
Part Number **QTHY266L**  
Rating **1300/130 kg**

PLACE THESE INSTRUCTIONS IN THE VEHICLE'S GLOVEBOX AFTER INSTALLATION IS COMPLETED

4. Remove 2 x hex head screws on LHS of vehicle from inside of back panel, accessed from underside of vehicle, retaining impact beam to rear panel.

Repeat for RHS and retain screws.



5. Unclip wiring connected to bumper from underside of vehicle.

Carefully unclip and remove bumper and set aside.

6. On the underside of LH chassis rails, remove 1 x rubber grommet covering hole and discard grommet.

Repeat for RHS.



**Cequent Customer Service**  
Ph: 1800 812 017 Fax: 03 9898 3299  
Email: [info@cequent.com.au](mailto:info@cequent.com.au)  
Post: PO Box 4050, Dandenong South VIC 3175

Towbar Fitting Instructions  
To Suit **HYUNDAI KONA OS CL4**  
Part Number **QTHY266L**  
Rating **1300/130 kg**

PLACE THESE INSTRUCTIONS IN THE VEHICLE'S GLOVEBOX AFTER INSTALLATION IS COMPLETED

7. Loosen 1 x hex head screw on outboard face of LH chassis rail securing the brake line.

Repeat for RHS.



8. On LHS, Insert T-bolt through bottom face of chassis where grommet was removed in Step 6. Ensure that the thread on the bolt is protruding from the chassis hole.

Repeat for RHS.



9. Loosely secure LH side arm to chassis rail by inserting nut plate into chassis rail and connecting via 2 x M12 bolts complete with 1 x washer per bolt from outboard face of chassis rail.

Repeat for RHS.



**Cequent Customer Service**  
Ph: 1800 812 017 Fax: 03 9898 3299  
Email: [info@cequent.com.au](mailto:info@cequent.com.au)  
Post: PO Box 4050, Dandenong South VIC 3175

# TRAILBOSS

Towbar Fitting Instructions  
To Suit **HYUNDAI KONA OS CL4**  
Part Number **QTHY266L**  
Rating **1300/130 kg**

PLACE THESE INSTRUCTIONS IN THE VEHICLE'S GLOVEBOX AFTER INSTALLATION IS COMPLETED

10. Loosely fasten LH T-bolt with 1 x M10 nut and 1 x M10 washer.

Repeat for RHS.



11. With 2 people, lift centre welded assembly up to side arms and loosely secure with 2 x M10 bolts per side, complete with 2 x M10 washers and 1 x M10 nut per bolt at 2 forward most mounting points.

Finally, secure welded assembly to side arms with 1 x M12 bolt per side, complete with 1 x M12 washer to captive nut on cross-tube.

Tighten all fasteners to torques listed below:

**M10 x 1.5: 44 N.m**

**M12 x 1.75: 77 N.m**



12. On LHS, insert brake line spacer in between chassis rail and bracket and secure with 1 x M8 x 25mm screw, complete with 1 x M8 washer.

Repeat for RHS.

Tighten M8 bolt to **28 N.m**.

**Cequent Customer Service**

Ph: 1800 812 017 Fax: 03 9898 3299

Email: [info@cequent.com.au](mailto:info@cequent.com.au)

Post: PO Box 4050, Dandenong South VIC 3175

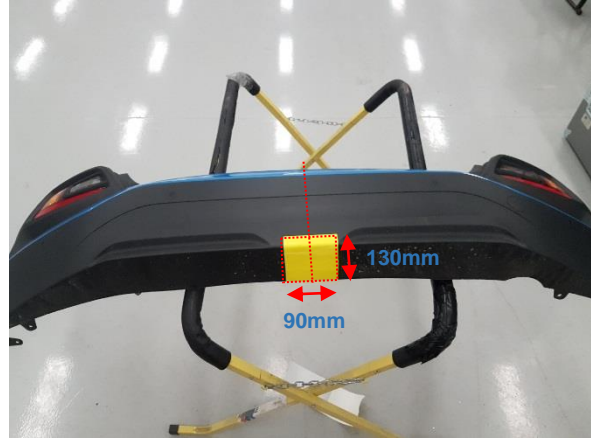
Towbar Fitting Instructions  
To Suit **HYUNDAI KONA OS CL4**  
Part Number **QTHY266L**  
Rating **1300/130 kg**

PLACE THESE INSTRUCTIONS IN THE VEHICLE'S GLOVEBOX AFTER INSTALLATION IS COMPLETED

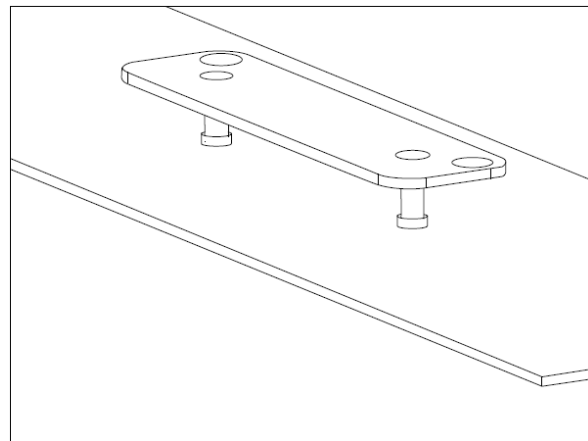
13. Identify the centreline of the bumper. Measure and mark 130mm from the bottom edge of the bumper and 45mm either side of the bumper centreline.

Using an appropriate cutting tool, cut the marked area ensuring to remove any burrs or sharp edges after cut.

**NOTE:** The centre plastic bumper tab support will be removed during this process (Located on inside face of bumper).



14. Mark out and drill 2 x  $\varnothing$ 5mm holes 69mm apart on bumper skin to support plug bracket
15. Reinstall all components following steps 1-5 in reverse.



**Cequent Customer Service**  
Ph: 1800 812 017 Fax: 03 9898 3299  
Email: [info@cequent.com.au](mailto:info@cequent.com.au)  
Post: PO Box 4050, Dandenong South VIC 3175



Wiring Loom Fitting Instructions  
To Suit Audi Q5  
Part Number 101968-WL

**Wiring Loom Installation Instructions**

**HYUNDAI KONA**

**Part No: 102012-WL**

**ECU: 04836**

**Power Harness: 04825**

**Tail Harness Length Required: 1200mm**

**Tail Harness Part Number Req'd: 04936**

**RPA Disable Information: Via Console**

**Electric Brake Input Location: Blue Wire Near ECU**

Wiring Loom Installation Time: Approx 60 Mins





Wiring Loom Fitting Instructions  
To Suit Audi Q5  
Part Number 101968-WL

1. Disconnect the negative battery terminal.
2. in the luggage compartment, remove the centre floor carpet (1).
3. Remove parcel shelf (2)
4. Remove the storage compartment (1).
5. Fold down rear seats (2).
6. Remove the rear luggage compartment trim (1), by first removing the two scrivenets (2) and pulling in an upwards direction.
7. Remove the three screws (1) from the LHS lower luggage compartment trim (2).
8. Carefully flex the LHS lower luggage compartment trim (2) towards the middle of the vehicle.
9. Disconnect the rear luggage compartment Light connector.
  
10. Locate the vehicle Blanking grommet (1), remove and discard
11. Drill out grommet hole to 50mm.
12. Feed the RPA Patch, Blue connector and Power connector on harness (102012-WL) down through grommet hole and seat  
  
**Note: Ensure grommet is seated correctly and makes a good seal.**
13. Route the harness up towards the LHS tail light.
14. At the LHS tail light, patch in the 4-Way trailer wiring mating connectors (1).
15. Connect the Trailer Wiring Harness 12-way connector (1) to the ECU (04836) (2).
16. Clean the sheet metal area (3), where the ECU (2) will be mounted on
17. Mount the ECU (2) to the cleaned area (3).  
**Note: Ensure ECU connector is facing down.**
18. Secure the Trailer Harness ground ring terminal (1) to the vehicle earth stud (2).
19. Outside of the vehicle with rear bumper removed, patch the RPA Cut-off Harness 12- way connectors (1) in between the vehicle 12-way connector (2) and bumper 12-way connector.
- 20.
21. Connect power harness (04825) 1-way female connector to mating 1-way male connector on the trailer wiring.
22. Route the power harness (1) along the under body of the vehicle. Following existing wiring where possible and avoiding moving parts.



Wiring Loom Fitting Instructions  
To Suit Audi Q5  
Part Number 101968-WL

22. Route the power harness (1) up to the positive battery terminal.

**Note: Avoid wiring near moving parts, brake lines and hot exhaust surfaces. Cable Tie every 600mm.**

23. Mount trailer socket (1) from tail harness (04936) to Towbar. Route the tail harness up to the left side.

24. Connect the tail harness 8-way connector (1) to the trailer patch 8-way mating connector (2).

25. To enable RPA cut-off, crimp the tail harness GREY and GREY/BLACK wires (3) to the trailer patch matching GREY and GREY/BLACK wires (4).

26. Apply silicone grease (5) to waterproof connector.

27. Test the trailer wiring harness function using a light board or multi-meter. Secure all harnesses using cable ties (not supplied).

28. Re-fit all removed parts and secure all fasteners, ensuring there are no squeaks or rattles.

29. Place the fitting instructions in the glove box after fitment.



# FITTING INSTRUCTIONS

## Silent Anti-Rattle Hitch Pin (PR0001)

• These fitting instructions are supplied to ensure understanding of how the HITCH PIN should be fitted and used correctly.

• Once installed, we recommend **ALL** instructions are kept and placed in the vehicle glove box.

**NOTE: Routine maintenance and inspection of the towbar & HITCH PIN is required. Regularly inspect for wear and check the tightness of the Hitch Pin. Follow instructions below to retighten the nut when necessary.**

**\*Do not tow with your vehicle if the R CLIP or the HITCH PIN is loose or missing. Replacement parts are available from your Pro Series Distributor.**

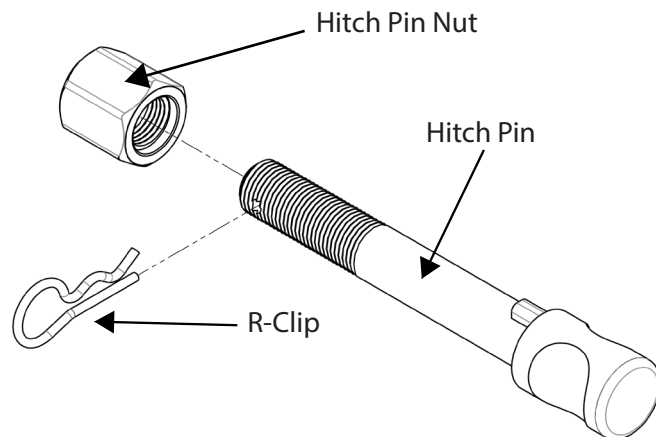


Fig 1. Silent Anti-Rattle Hitch Pin assembly

### STEP 1

Insert Trailer Ball Mount (TBM) into towbar HITCHBOX, aligning hole in TBM SHANK with hole in HITCHBOX (Fig 2).

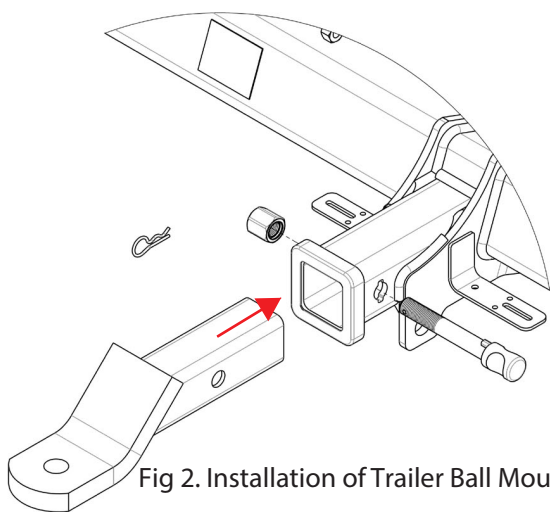


Fig 2. Installation of Trailer Ball Mount

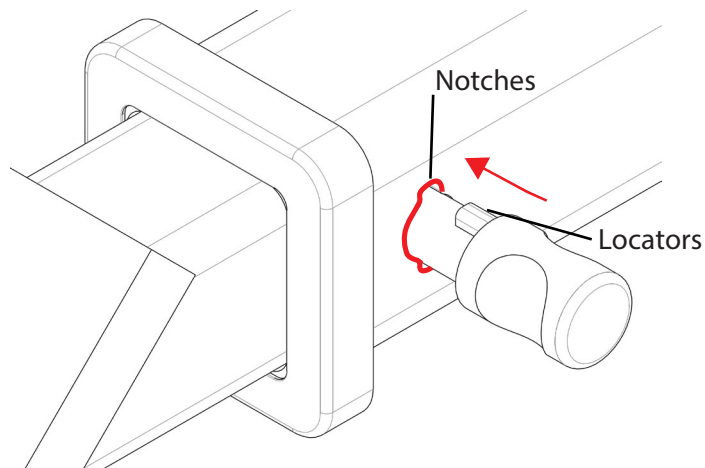


Fig 3. Silent Anti-Rattle Hitch Pin orientation

### STEP 2

Insert HITCH PIN through hole in HITCHBOX and hole in TBM SHANK; ensure the LOCATORS are inserted into the NOTCHES in the HITCHBOX (Fig. 3).

### STEP 3

Screw HITCH PIN NUT onto HITCH PIN; tighten HITCH PIN NUT until finger tight, ensuring TBM is restrained from movement.

### STEP 4

Tighten HITCH PIN NUT by turning nut a further 1/8th of a turn in the clockwise direction using a 24mm spanner (Fig. 4).

### STEP 5

Install HITCH PIN R CLIP through the hole on the HITCH PIN (Fig. 1).

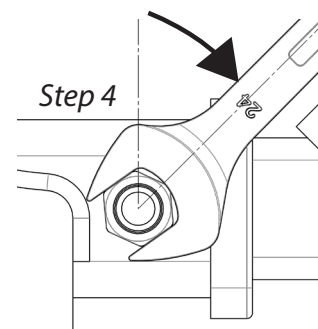


Fig 4. Tightening of Silent Anti-Rattle Hitch Pin Nut