

TRAILBOSS

Towbar Fitting Instructions To Suit **HYUNDAI SANTA FE CL4** Part Number **QTHY267L** Rating **2000/100 kg**

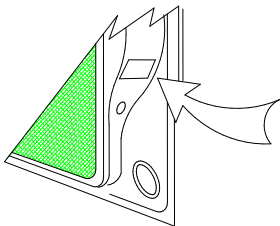
PLACE THESE INSTRUCTIONS IN THE VEHICLE'S GLOVEBOX AFTER INSTALLATION IS COMPLETED

WARNING:

1. Do not, drill, cut, weld or otherwise modify the tow bar.
2. If you are using electric welding on a motor vehicle, **always** check that the vehicle is not equipped with electronic engine or instrument management equipment. Failure to do so could **destroy** any onboard computers. If in doubt, check with the vehicle's manufacturer.
3. The high tensile fasteners supplied with this product were used to achieve the specified rating. If replacement is required ensure that fasteners of the same rating & quality are used. Contact an authorised **Trailboss** dealer if further information is required.
4. If TBM is used in inverted position tow ball may make contact with rear tailgate when lowered, which could cause damage.

General:

1. Ensure all hardware items have been included refer to assembly diagram.
2. It is recommended that the instructions are read through and completely understood before making any attempt to fit this product.
3. Be wary of any changes to vehicle designs or other accessories that may conflict with the installation of this product.
4. Before drilling ensure that the area is clear of fuel, electrical & other components.
5. All holes drilled into the body panels shall have all burrs & swarf removed then coated with a suitable rust preventative paint.
6. For vehicles that require the bumper to be cut. Ensure cut out area is in correct position on the vehicle prior to cutting the bumper.
7. The high tensile fasteners supplied with this product were used to achieve the specified rating. If replacement is required ensure that fasteners of the same rating & quality are used. Contact an authorized **Trailboss** dealer if further information is required.
8. Ensure that all hardware is fastened to torque list below check fasteners on regular basis.
9. Tow bar load rating sticker provided with this product shall be conspicuously located on inside rear end of the driver's door. **(See diagram below).**
10. Trailboss recommends that you check your tow ball to ensure that it complies with the Australian standards **AS 4177.2**.
11. **PLEASE NOTE:** It is advised to remove your LUG or TBM when not actually towing so as to produce a clear view of the vehicles registration plate if obscured, and to also provide maximum available departure angle



Place load rating sticker
inside driver's door here

FOR TRAILER TOWING PURPOSES ONLY
For towing capacity details please refer to vehicle owner's manual or to the manufacturer. Overloading can void your warranty.

RECOMMENDED ASSEMBLY TORQUE LISTING

Diameter	Grade 8.8 Bolt
M6	9.5 Nm
M8	21.7 Nm
M10	43.4 Nm
M12	77.3Nm
M14	146 Nm

Tow bar Maintenance and Care.

Trailboss recommends that bolt torque's, as listed below, are routinely and regularly inspected and checked for correct tension. Replace any worn or defective parts.

We recommended to remove Tow Ball Mounts (TBM's, tongues or lugs) when not being used for any considerable length of time.

So as to avoid injury, when not towing it is suggested that the tongue, Pull Pin and R-clip are removed then stored in a safe, clean and dry place, away from excessive moisture.

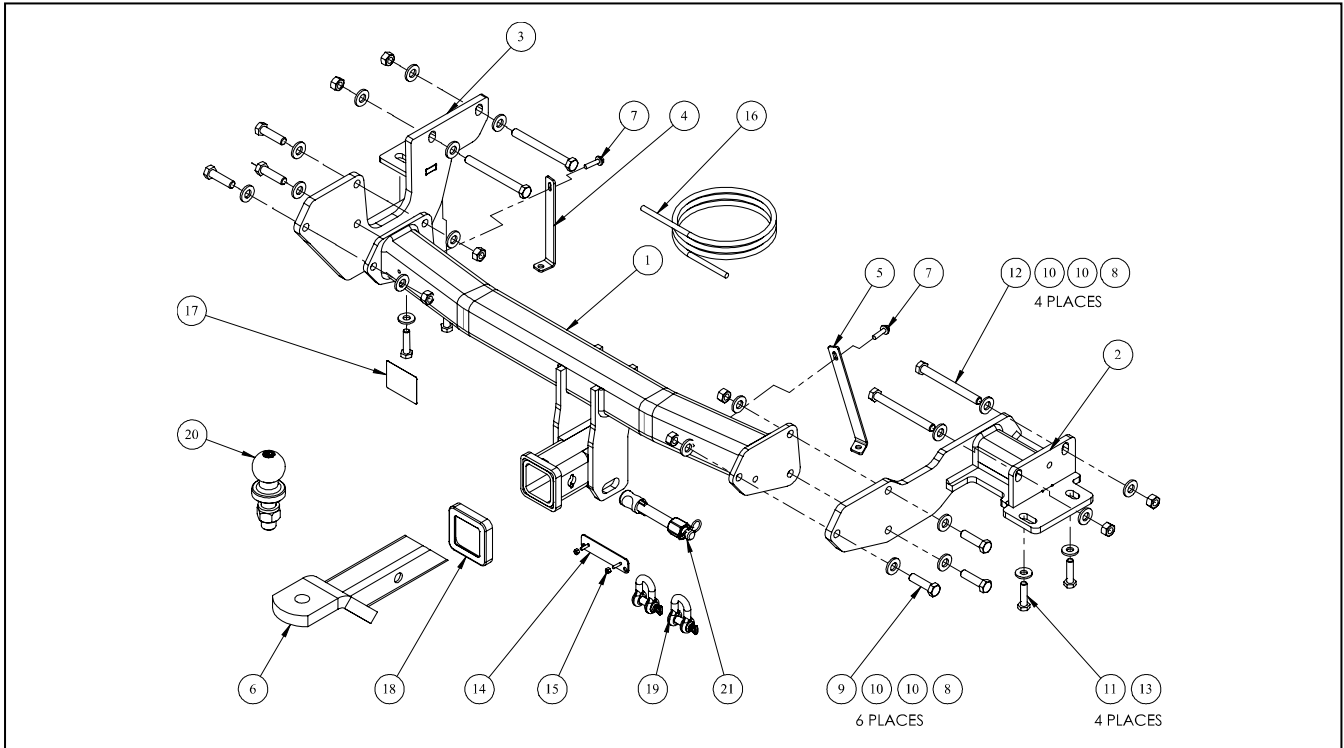
Hitch Pull Pins and spring "R" clips are regularly checked for proper installation. Replace any worn or defective parts.

Cequent Customer Service
Ph: 1800 812 017 Fax: 03 9898 3299
Email: info@cequent.com.au
Post: PO Box 4050, Dandenong South VIC 3175

TRAILBOSS

Towbar Fitting Instructions
 To Suit **HYUNDAI SANTA FE CL4**
 Part Number **QTHY267L**
 Rating **2000/100 kg**

PLACE THESE INSTRUCTIONS IN THE VEHICLE'S GLOVEBOX AFTER INSTALLATION IS COMPLETED



ITEM	DESCRIPTION	QTY
1	SANTA FE WELDED ASSY	1
2	SIDE ARM ASSY RH	1
3	SIDE ARM ASSY LH	1
4	BUMPER TAB LHS	1
5	BUMPER TAB RHS	1
6	TRAILER BALL MOUNT	1
7	TEK SCREW 14-20 HEX HD 22MM	2
8	NUT HEX HD M12x1.25P G8	10
9	SET SCREW HEX HD M12x45x1.25P	6
10	WASHER PLAIN 1/2x1-1/8x16G	20
11	BOLT HEX HD M10x40x1.25P G10.9	4

ITEM	DESCRIPTION	QTY
12	BOLT HEX HD M12x120x1.25P G10.9	4
13	WASHER PLAIN M10x25x3	4
14	VE PLUG BRACKET	1
15	NUT NYLON LOCK HEX HD M4x0.7P G8	2
16	WIRING LOOM	1
17	ACRYLIC COMPLIANCE LABEL	1
18	QTB COL COVER TRAILBOSS	1
19	HR RATED D SHACKLE 10MM 1000KG	2
20	TOWBALL 50MM CHROME 3500KG PRO	1
21	SILENT HITCH PIN CLASS 4 SILVER	1

Cequent Customer Service
 Ph: 1800 812 017 Fax: 03 9898 3299
 Email: info@cequent.com.au
 Post: PO Box 4050, Dandenong South VIC 3175

TRAILBOSS

Towbar Fitting Instructions
To Suit **HYUNDAI SANTA FE CL4**
Part Number **QTHY267L**
Rating **2000/100 kg**

PLACE THESE INSTRUCTIONS IN THE VEHICLE'S GLOVEBOX AFTER INSTALLATION IS COMPLETED

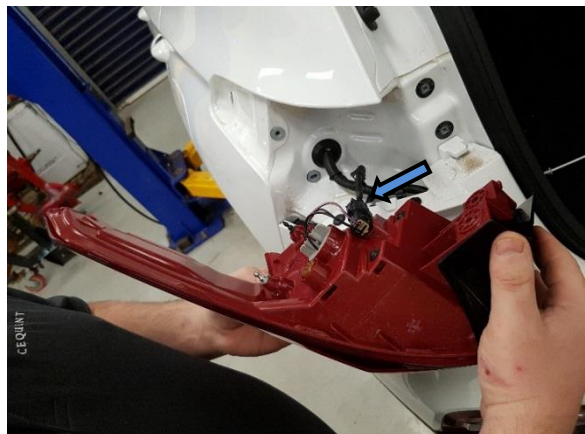
1. Open tailgate to reveal taillight mounting screw covers.



2. Lift covers and remove 2 x screws.
Repeat for opposite side



3. Remove taillight by pulling rearwards and disconnect the harness.
Repeat for opposite side.



Cequent Customer Service
Ph: 1800 812 017 Fax: 03 9898 3299
Email: info@cequent.com.au
Post: PO Box 4050, Dandenong South VIC 3175

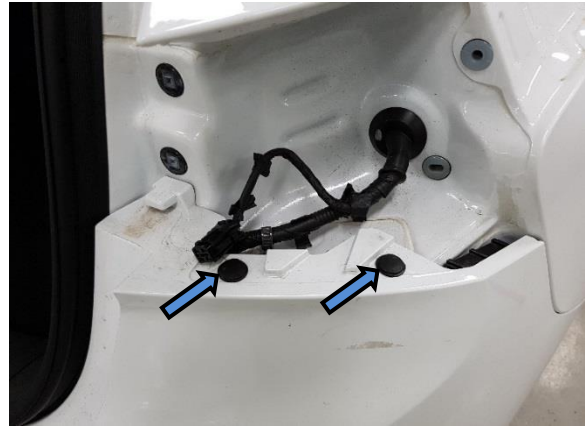
TRAILBOSS

Towbar Fitting Instructions
To Suit **HYUNDAI SANTA FE CL4**
Part Number **QTHY267L**
Rating **2000/100 kg**

PLACE THESE INSTRUCTIONS IN THE VEHICLE'S GLOVEBOX AFTER INSTALLATION IS COMPLETED

4. In the taillight cavity remove 2 x scrivets on bumper.

Repeat for opposite side.



5. Lower spare wheel and remove from vehicle. Spare wheel cable release is located in the tailgate, under the cap in the spare wheel tool location.



6. In wheel arch remove 4 x Torx screws.
7. Remove the mudflap secured with 1 x scrivet located from the underside of the vehicle.

Repeat for opposite side



Cequent Customer Service
Ph: 1800 812 017 Fax: 03 9898 3299
Email: info@cequent.com.au
Post: PO Box 4050, Dandenong South VIC 3175

TRAILBOSS

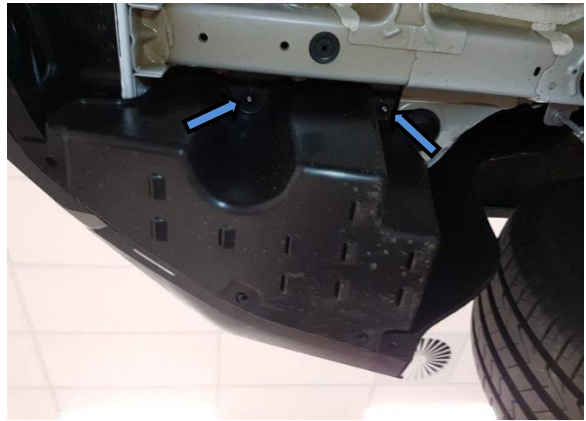
Towbar Fitting Instructions
To Suit **HYUNDAI SANTA FE CL4**
Part Number **QTHY267L**
Rating **2000/100 kg**

PLACE THESE INSTRUCTIONS IN THE VEHICLE'S GLOVEBOX AFTER INSTALLATION IS COMPLETED

8. Along underside of bumper, remove 5 x scrivets.



9. On the left side, remove the plastic underbody trim secured with 2 x plastic nuts.



10. Lower the exhaust by removing the rubber hangers from 3 x hanger brackets. Ensure to support the exhaust.
11. Remove the most rearward exhaust rubber hanger from the exhaust.



Cequent Customer Service
Ph: 1800 812 017 Fax: 03 9898 3299
Email: info@cequent.com.au
Post: PO Box 4050, Dandenong South VIC 3175

TRAILBOSS

Towbar Fitting Instructions
To Suit **HYUNDAI SANTA FE CL4**
Part Number **QTHY267L**
Rating **2000/100 kg**

PLACE THESE INSTRUCTIONS IN THE VEHICLE'S GLOVEBOX AFTER INSTALLATION IS COMPLETED

12. Refit the exhaust hanger to the rearmost hanger bracket.



13. Under vehicle remove the 3 x bolts securing the impact beam and discard.

Repeat for opposite side.



14. Disconnect sensor plug located inside of bumper on the LH side.

15. Peel away bumper from the sides and remove from vehicle.



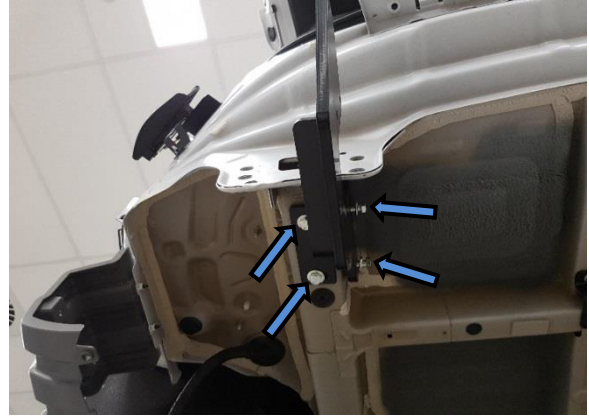
Cequent Customer Service
Ph: 1800 812 017 Fax: 03 9898 3299
Email: info@cequent.com.au
Post: PO Box 4050, Dandenong South VIC 3175

TRAILBOSS

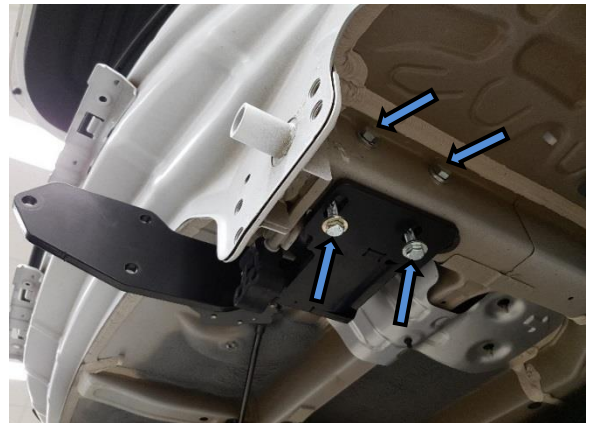
Towbar Fitting Instructions
To Suit **HYUNDAI SANTA FE CL4**
Part Number **QTHY267L**
Rating **2000/100 kg**

PLACE THESE INSTRUCTIONS IN THE VEHICLE'S GLOVEBOX AFTER INSTALLATION IS COMPLETED

16. Fit LH side arm to the chassis and loosely secure with 2 x M12 bolts to the side complete with 1 x M12 washer per bolt and to the underside of chassis with 2 x M10 bolts complete with 1 x M10 washer per bolt.



17. Fit the RH side arm to the chassis and loosely secure to the side with 2 x M12 bolts complete with 2 x M12 washers and 1 x M12 nut per bolt and to the underside of chassis with 2 x M10 bolts complete with 1 x M10 washer per bolt.



18. Lift cross tube to the side arms and loosely secure with 6 x M12 Bolts complete with 2 x M12 washers and 1 x M12 nut per bolt.

Torque all fasteners as specified.

**M10 : 65Nm
M12 : 120Nm**



Cequent Customer Service
Ph: 1800 812 017 Fax: 03 9898 3299
Email: info@cequent.com.au
Post: PO Box 4050, Dandenong South VIC 3175

Towbar Fitting Instructions
To Suit **HYUNDAI SANTA FE CL4**
Part Number **QTHY267L**
Rating **2000/100 kg**

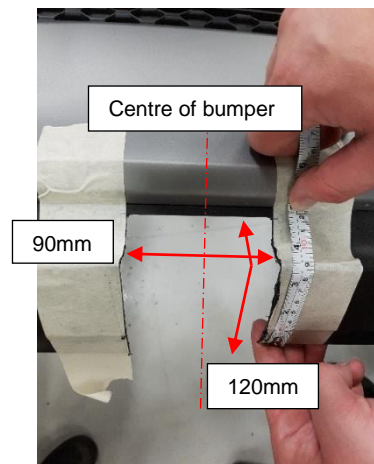
PLACE THESE INSTRUCTIONS IN THE VEHICLE'S GLOVEBOX AFTER INSTALLATION IS COMPLETED

19. Remove the impact beam from the bumper, secured with 2 x scrivenets on the top and 3 x scrivenets along the bottom.

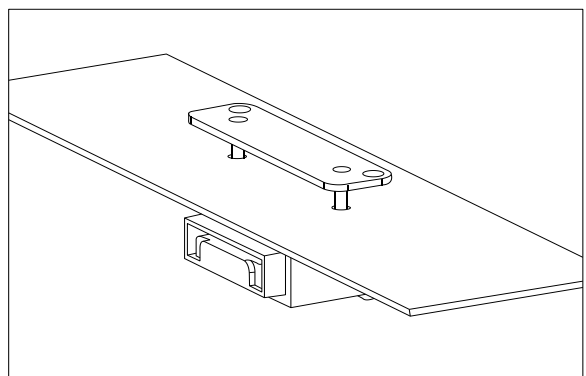
Discard the impact beam and retain 2 x scrivenets.



20. For the bumper cut.
Locate the centre of the bumper and mark off 90mm wide by 120mm long measured from the bottom edge of the bumper.
(The cut should stop about 5 mm below the painted bumpers bottom most main styleline).



21. Determine an appropriate position for the plug bracket. Mark out and drill 2x $\varnothing 5\text{mm}$ holes 69mm apart on bumper skin to support plug bracket.



Cequent Customer Service
Ph: 1800 812 017 Fax: 03 9898 3299
Email: info@cequent.com.au
Post: PO Box 4050, Dandenong South VIC 3175

TRAILBOSS

Towbar Fitting Instructions
To Suit **HYUNDAI SANTA FE CL4**
Part Number **QTHY267L**
Rating **2000/100 kg**

PLACE THESE INSTRUCTIONS IN THE VEHICLE'S GLOVEBOX AFTER INSTALLATION IS COMPLETED

22. On the underbody trim (removed in step 9) make 2 x clearance cuts (40mm x 40mm) as depicted.



23. Reattach bumper and removed components by following steps 1-15 in reverse.
(The impact beam is not refitted, step 13)

24. Attach the LH and RH bumper brackets to the bumper with the retained 2 x scrivenets.

Secure the brackets to the crosstube with 1 x Tek screw per bracket.



Cequent Customer Service
Ph: 1800 812 017 Fax: 03 9898 3299
Email: info@cequent.com.au
Post: PO Box 4050, Dandenong South VIC 3175



Wiring Loom Fitting Instructions
To Suit Hyundai Santa Fe
Part Number 102056-WL

Wiring Loom Installation Instructions

Hyundai Santa Fe
Part No: 102056-WL
ECU: 04826

Tail Harness Length Required: 1200mm
RPA Disable Information: Near transmission lever
Electric Brake Wire Location: Near pre-wire connector

Wiring Loom Installation Time: Approx 60 Mins



Wiring Loom Fitting Instructions
To Suit Hyundai Santa Fe
Part Number 102056-WL

1. In the engine bay, disconnect the vehicle negative battery.
 2. In the boot, fold down the rear seats.
 3. Lift up the boot cover storage carpet lid.
 4. Remove the rear sunshade and the foam jack storage tray.
 5. Using a flat blade screw driver, dislodge the 3 caps covering the screws on the storage trim.
 6. Using a 10mm socket or a Phillips head screw driver, remove the 3 screws securing the rear floor trim.
 7. Remove the entire storage trim and carpet lid assembly from the vehicle by pulling in an upwards direction.
 8. Remove the boot scuff plate by pulling in an upwards direction.
 9. Using a 14mm socket, remove the 4 bolts securing the LHS rear seat.
 10. Disconnect the seat belt warning connector.
 11. Remove the rear LHS seat.
 12. Remove the 3 screws securing the LHS trim.
 13. Remove the screw behind the luggage mounting hook by removing the cover.
 14. Fully dislodge the rear LHS trim to gain access to the pre-wire connector.
 15. Plug pre-wire connector into the mating connector on the trailer patch (102056-WL).
 16. Route the blue connector along rear of the vehicle.
 17. Route the earth ring terminal over the LHS wheel arch.
 18. Route the ECU 12-way connector up the 'D' pillar.
 19. Using alcohol wipe, clean the LHS inner sheet metal area and the underside of the ECU (04826).
 20. Connect the trailer patch 12-way connector to the ECU.
 21. Apply double sided tape to the ECU and secure it to the vehicle sheet metal.
- Note: Mount the ECU, ensuring connector is orientated downwards.**
22. Route the ring terminal towards the 'C' pillar.



Wiring Loom Fitting Instructions
To Suit Hyundai Santa Fe
Part Number 102056-WL

23. Connect the ground wire ring terminal to the vehicle earthing point.

Note: Use supplied Cable Ties to secure the harness away from the seat belt.

24. On the boot floor locate the factory 15mm grommet hole.

25. Drill out to 30mm using a step drill.

26. With the rear bumper removed, secure tail harness to towbar.

27. Route tail harness (1200mm) up through chassis rail and previously drilled grommet hole.

28. Seat grommet in 30mm hole and route to trailer harness blue connector on wiring loom.

Note: Keep harness routing clear of all sharp edges, moving parts and places of extreme heat.

Note: Ensure grommet is seated correctly and makes a good seal.

29. Connect the tail harness (tail length 1200mm) 8-way connector to the trailer patch mating 8-way connector.

30. Secure all harness using supplied Cable Ties.

31. Test the trailer patch function using a light board or multi-meter.

32. Re-fit all removed parts and secure all fasteners, ensuring there are no squeaks or rattles.

33. The RPA function can be disabled via a switch next to the transmission lever.

34. Place the fitting instructions in the glove box after fitment.



FITTING INSTRUCTIONS

Silent Anti-Rattle Hitch Pin (PR0001)

• These fitting instructions are supplied to ensure understanding of how the HITCH PIN should be fitted and used correctly.

• Once installed, we recommend **ALL** instructions are kept and placed in the vehicle glove box.

NOTE: Routine maintenance and inspection of the towbar & HITCH PIN is required. Regularly inspect for wear and check the tightness of the Hitch Pin. Follow instructions below to retighten the nut when necessary.

***Do not tow with your vehicle if the R CLIP or the HITCH PIN is loose or missing. Replacement parts are available from your Pro Series Distributor.**

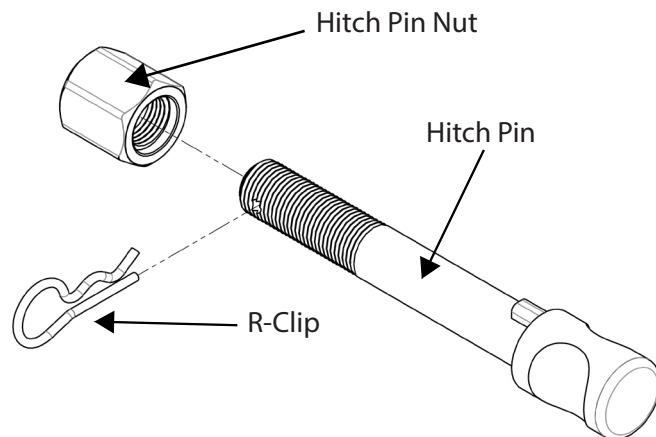


Fig 1. Silent Anti-Rattle Hitch Pin assembly

STEP 1

Insert Trailer Ball Mount (TBM) into towbar HITCHBOX, aligning hole in TBM SHANK with hole in HITCHBOX (Fig 2).

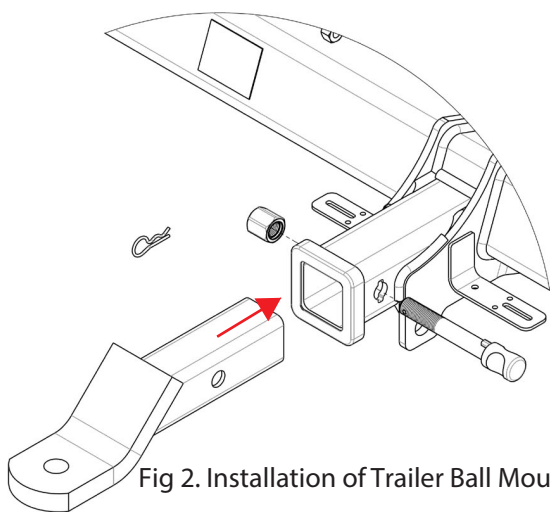


Fig 2. Installation of Trailer Ball Mount

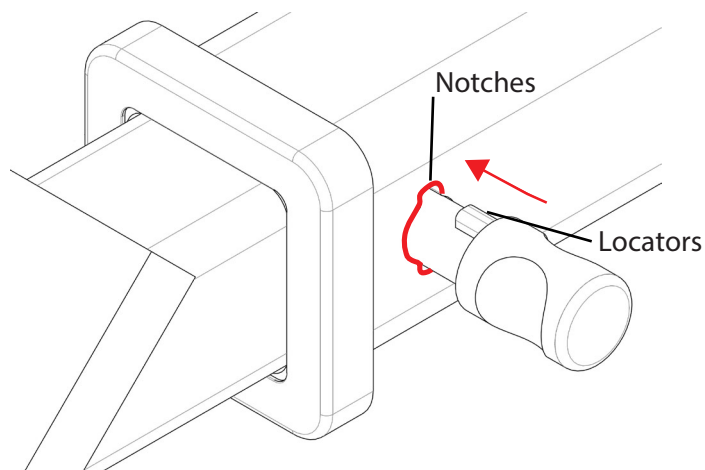


Fig 3. Silent Anti-Rattle Hitch Pin orientation

STEP 2

Insert HITCH PIN through hole in HITCHBOX and hole in TBM SHANK; ensure the LOCATORS are inserted into the NOTCHES in the HITCHBOX (Fig. 3).

STEP 3

Screw HITCH PIN NUT onto HITCH PIN ; tighten HITCH PIN NUT until finger tight, ensuring TBM is restrained from movement.

STEP 4

Tighten HITCH PIN NUT by turning nut a further 1/8th of a turn in the clockwise direction using a 24mm spanner (Fig. 4).

STEP 5

Install HITCH PIN R CLIP through the hole on the HITCH PIN (Fig. 1).

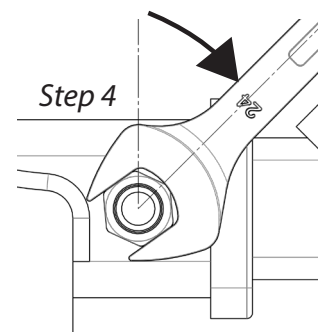


Fig 4. Tightening of Silent Anti-Rattle Hitch Pin Nut