

TRAILBOSS

Towbar Fitting Instructions
To Suit **IVECO DAILY TOWBAR**
Part Number **QTIV02**
Rating **3500/350 kg**

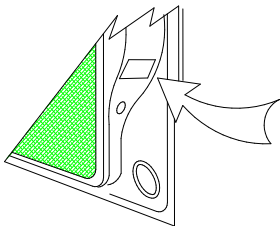
PLACE THESE INSTRUCTIONS IN THE VEHICLE'S GLOVEBOX AFTER INSTALLATION IS COMPLETED

WARNING:

1. Do not, drill, cut, weld or otherwise modify the tow bar.
2. If you are using electric welding on a motor vehicle, **always** check that the vehicle is not equipped with electronic engine or instrument management equipment. Failure to do so could **destroy** any onboard computers. If in doubt, check with the vehicle's manufacturer.
3. The high tensile fasteners supplied with this product were used to achieve the specified rating. If replacement is required ensure that fasteners of the same rating & quality are used. Contact an authorised **Trailboss** dealer if further information is required.

General:

1. Ensure all hardware items have been included refer to assembly diagram.
2. It is recommended that the instructions are read through and completely understood before making any attempt to fit this product.
3. Be wary of any changes to vehicle designs or other accessories that may conflict with the installation of this product.
4. Before drilling ensure that the area is clear of fuel, electrical & other components.
5. All holes drilled into the body panels shall have all burrs & swarf removed then coated with a suitable rust preventative paint.
6. For vehicles that require the bumper to be cut. Ensure cut out area is in correct position on the vehicle prior to cutting the bumper.
7. The high tensile fasteners supplied with this product were used to achieve the specified rating. If replacement is required ensure that fasteners of the same rating & quality are used. Contact an authorized **Trailboss** dealer if further information is required.
8. Ensure that all hardware is fastened to torque list below check fasteners on regular basis.
9. Tow bar load rating sticker provided with this product shall be conspicuously located on inside rear end of the driver's door. **(See diagram below).**
10. Trailboss recommends that you check your tow ball to ensure that it complies with the Australian standards **AS 4177.2.**
11. **PLEASE NOTE:** It is advised to remove your lug or tbm when not actually towing so as to produce a clear view of the vehicles registration plate if obscured, and to also provide maximum available departure angle
12. Pull Pin must be fit in down position.



Place load rating sticker
inside driver's door here

FOR TRAILER TOWING PURPOSES ONLY
For towing capacity details please refer to vehicle owner's
manual or to the manufacturer. Overloading can void your
warranties.

Tow bar Maintenance and Care.

Trailboss recommends that bolt torque's, as listed below, are routinely and regularly inspected and checked for correct tension. Replace any worn or defective parts.

We recommended to remove Tow Ball Mounts (TBM's, tongues or lugs) when not being used for any considerable length of time.

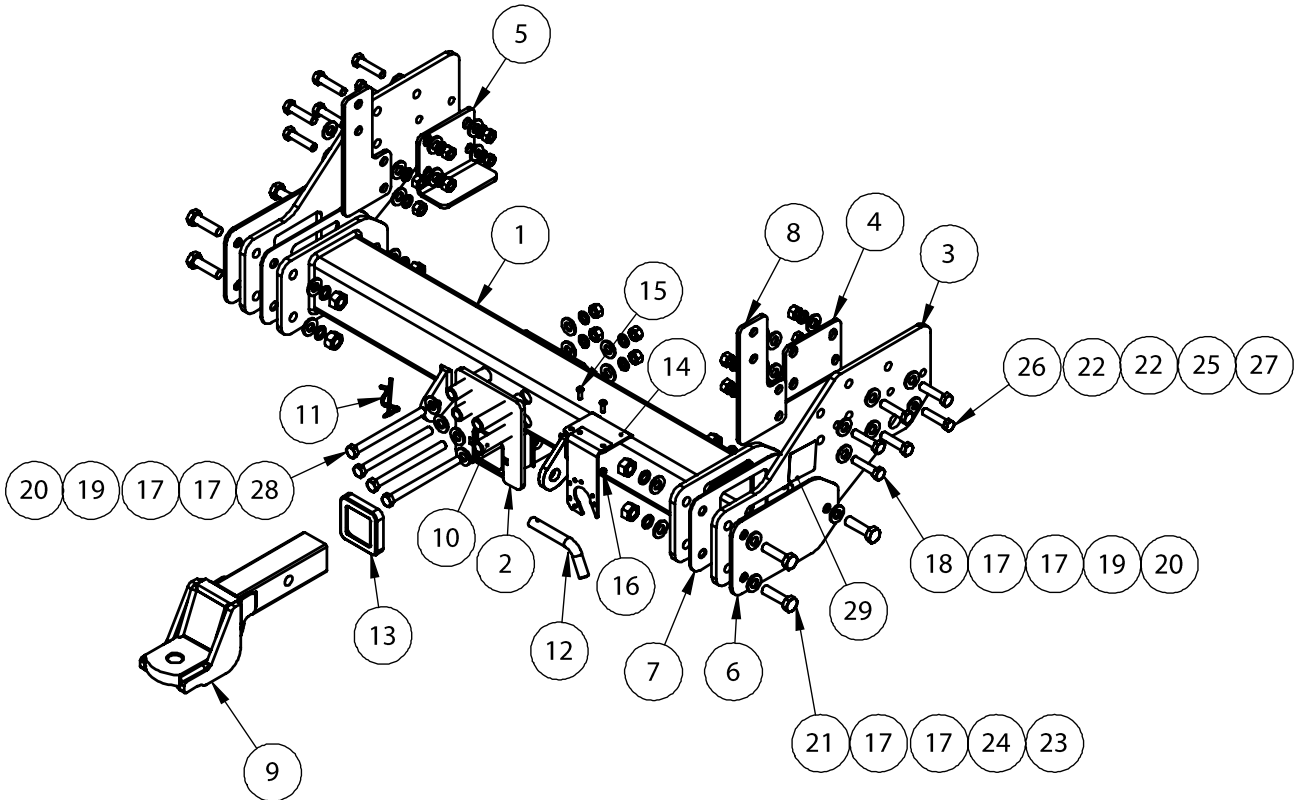
So as to avoid injury, when not towing it is suggested that the tongue, Pull Pin and R-clip are removed then stored in a safe, clean and dry place, away from excessive moisture.

Hitch Pull Pins and spring "R" clips are regularly checked for proper installation. Replace any worn or defective parts.



Towbar Fitting Instructions
To Suit **IVECO DAILY TOWBAR**
Part Number **QTIV02**
Rating **3500/350 kg**

PLACE THESE INSTRUCTIONS IN THE VEHICLE'S GLOVEBOX AFTER INSTALLATION IS COMPLETED



ADDITIONAL ITEMS

FITTING INSTRUCTION LR LABEL



Towbar Fitting Instructions
To Suit **IVECO DAILY TOWBAR**
Part Number **QTIV02**
Rating **3500/350 kg**

PLACE THESE INSTRUCTIONS IN THE VEHICLE'S GLOVEBOX AFTER INSTALLATION IS COMPLETED

QTY	DESCRIPTION	ITEM NO.
1	CROSSTUBE ASSEMBLY	1
1	HD CENTRE SECTION	2
2	SIDEPLATE	3
1	CHASSIS PLATE RHS	4
1	CHASSIS PLATE LHS	5
2	CAPPING PLATE	6
2	SIDEARM SHIM 3mm	7
2	TAIL PANEL BRACKET	8
1	HEAVY DUTY TBM	9
1	TUBE 21.3x2.6x94mm	10
1	R CLIP	11
1	PULL PIN	12
1	HITCH BOX COLLAR COVER	13
1	PLUG PATE 3mm	14
2	SCREW PAN XR MTS M5-0.8 Z/P	15
2	NUT NYLOC M5-0.8 Z/P	16
40	M14x28x3 Z/P FT WASHER	17
10	BOLT HEX M12x50x1.75P	18
14	WASHERSPRING FT M12x4.0x2.5mm	19
14	M12x1.75 HEX NUT PC8	20
6	BOLT M14x50x1.5P	21
4	WASEHR FT M10x25.4x3	22
6	NUT HX M14-1.5	23
6	M14 SPRING WASHER	24
2	M10x3.5x2.2 SPRING WASHER	25
2	BOLT M10-1.5x50mm BLK XYLAN	26
2	HEX NUT M10x1.5	27
4	BOLT M12x1.75Px150	28
1	ACRYLIC CP STICKER	29



Towbar Fitting Instructions
To Suit **IVECO DAILY TOWBAR**
Part Number **QTIV02**
Rating **3500/350 kg**

PLACE THESE INSTRUCTIONS IN THE VEHICLE'S GLOVEBOX AFTER INSTALLATION IS COMPLETED

Check contents of kit before commencing fitment.

CAUTION: This Towbar is intended to be fitted prior to any other accessory being installed.(i.e.tray,truck body etc)

Instruction:

1. Remove the Tail Panel by unbolting 2 x M12 Bolts on either side of the Tail panel and keep. Remove the aluminium plate which holds the hook for spare tyre by unbolting 2 x Bolts and discard. (Figure 1)
2. Remove Shipping Hook (if fitted) and discard. (Figure 2)
3. Loosely secure the RHS Sidearm (Part of QTIV02-SK Kit) to the Chassis Rail, Tail Panel Bracket and Chassis Plate using 5 x M12 Bolts, Nuts, Spring and Flat Washers; 1 x M10 Bolt, Nut, Spring and Flat Washer. Only 4 Bolts (3 M12 & 1 M10) are used to fasten Chassis Plate inside the Chassis Rail. Loosely secure the Tail Panel with the Bolts and Nuts removed in step1. (Assembly on Page 2)

Repeat the LHS Sidearm.

4. Insert 4 Tube Sleeves (Part of 52865 Kit) into the Cross Tube holes, roughly locating them with the help of the long M12 Bolt. (Assembly on Page 2)
5. Slide the Centre Section (Part of 53075 Kit) and firmly secure it to the Cross Tube Assembly (52865) using 4 x M12 Bolts, Nuts, Spring and Flat Washers. (Assembly on Page 2)
6. Firmly clamp the RHS and LHS Sidearms to the Chassis Rails. Loosely secure the Cross Tube Assembly and the 2 Capping Plates (Part of QTIV02-SK Kit) to the RHS and LHS Sidearms using 3 x M14 Bolts, Nuts, Spring and Flat Washers. (Assembly on Page 2)
7. Centralise the Towbar between the RHS and LHS Side Plate (Item 3&4) and observe the gaps between the ends of the Cross Tube and the Side Plates.
If there is a gap between the Cross Tube and the Side Plates, place 3mm thick Sidearm Shims (provided in 51003TB KIT) to fill in the gaps. Use on one or either side of the towbar depending on the gap.
If no Sidearm Shims are required, discard the 2 Sidearm Shims. (Figure 3)
8. Using a Torque Wrench, Torque all Bolts to the recommended setting below.

TORQUE M14 BOLTS TO 122Nm

TORQUE M12 BOLTS TO 87Nm

TORQUE M10 BOLTS TO 50Nm

9. Apply firm, even pressure to secure the Hitch Box Collar Cover to the Towbar Hitch Box. Insert the Tongue into the Towbar Hitch box and secure with the Pull Pin and the R Clip. (Assembly on Page 2)
10. Hook the Spare Wheel Hook onto the Hole in the Sidearm. (Figure 4)
Hook this after the Bolts are fully tightened.

Towbar Fitting Instructions
To Suit **IVECO DAILY TOWBAR**
Part Number **QTIV02**
Rating **3500/350 kg**

PLACE THESE INSTRUCTIONS IN THE VEHICLE'S GLOVEBOX AFTER INSTALLATION IS COMPLETED

11. Firmly clamp the Plug Bracket (Part of QTIV02-SK Kit) with 2 x M5 Bolts and Nyloc Nuts to the Plug Plate welded on the Cross tube. (Assembly on Page 2)

TORQUE M5 BOLTS TO 6Nm

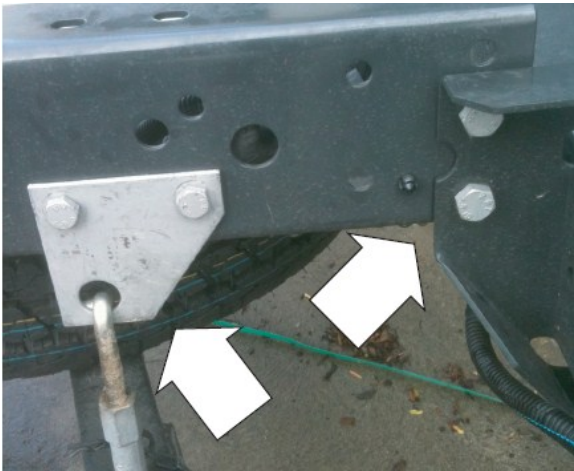


Figure 1



Figure 2

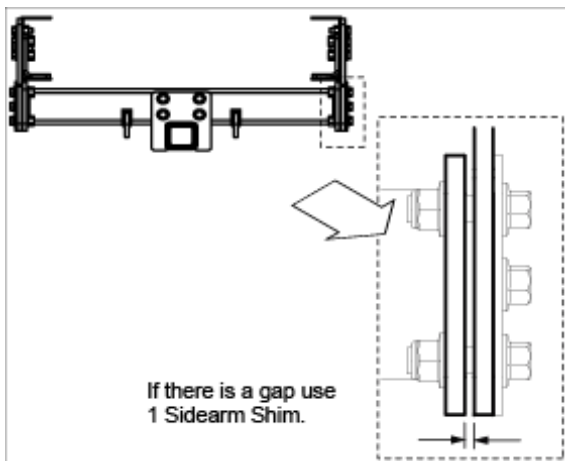


Figure 3



Figure 4