

# TRAILBOSS

## Towbar Fitting Instructions To Suit JEEP COMPASS 03 / 07 On & JEEP PATRIOT 08 / 07 On Part Number QTJP12L Rating 1500 kg

**PLEASE ENSURE THAT ALL INSTRUCTIONS ARE UNDERSTOOD PRIOR TO FITMENT  
PLACE THESE INSTRUCTIONS IN THE VEHICLES GLOVE BOX AFTER INSTALLATIONS COMPLETE**

### **WARNING:**

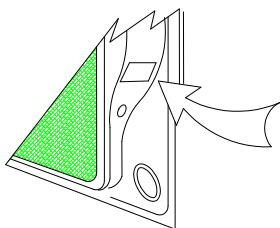
Do not, drill, cut, weld or otherwise modify the tow bar.

If you are using electric welding on a motor vehicle, **always** check that the vehicle is not equipped with electronic engine or instrument management equipment. Failure to do so could **destroy** any onboard computers. If in doubt, check with the vehicle's manufacturer.

The high tensile fasteners supplied with this product were used to achieve the specified rating. If replacement is required ensure that fasteners of the same rating & quality are used. Contact an authorised **Trailboss** dealer if further information is required.

### **General:**

1. Ensure all hardware items have been included refer to assembly diagram.
2. It is recommended that the instructions are read through and completely understood before making any attempt to fit this product.
3. Be wary of any changes to vehicle designs or other accessories that may conflict with the installation of this product.
4. Before drilling ensure that the area is clear of fuel, electrical & other components.
5. All holes drilled into the body panels shall have all burrs & swarf removed then coated with a suitable rust preventative paint.
6. For vehicles that require the bumper to be cut. Ensure cut out area is in correct position on the vehicle prior to cutting the bumper.
7. The high tensile fasteners supplied with this product were used to achieve the specified rating. If replacement is required ensure that fasteners of the same rating & quality are used. Contact an authorized **Trailboss** dealer if further information is required.
8. Ensure that all hardware is fastened to torque list below check fasteners on regular basis.
9. Tow bar load rating sticker provided with this product shall be conspicuously located on inside rear end of the driver's door. **(See diagram below).**
10. Trailboss recommends that you check your tow ball to ensure that it complies with the Australian standards **AS 4177.2.**
11. **PLEASE NOTE:** It is advised to remove your lug or tbn when not actually towing so as to produce a clear view of the vehicles registration plate if obscured, and to also provide maximum available departure angle
12. Pull Pin must be fit in down position.



**Place load rating sticker  
inside driver's door here**

**FOR TRAILER TOWING PURPOSES ONLY**  
For towing capacity details please refer to vehicle owner's manual  
or to the manufacturer. Overloading can void your warranties.

#### **RECOMMENDED ASSEMBLY TORQUE LISTING**

<u>Diameter</u>	<u>Grade 8.8 Bolt</u>
M6	9.5 Nm
M8	21.7 Nm
M10	43.4 Nm
M12	77.3Nm
M14	146 Nm
M16	189.8 Nm

### **Tow bar Maintenance and Care.**

Trailboss recommends that bolt torque's, as listed below, are routinely and regularly inspected and checked for correct tension. Replace any worn or defective parts.

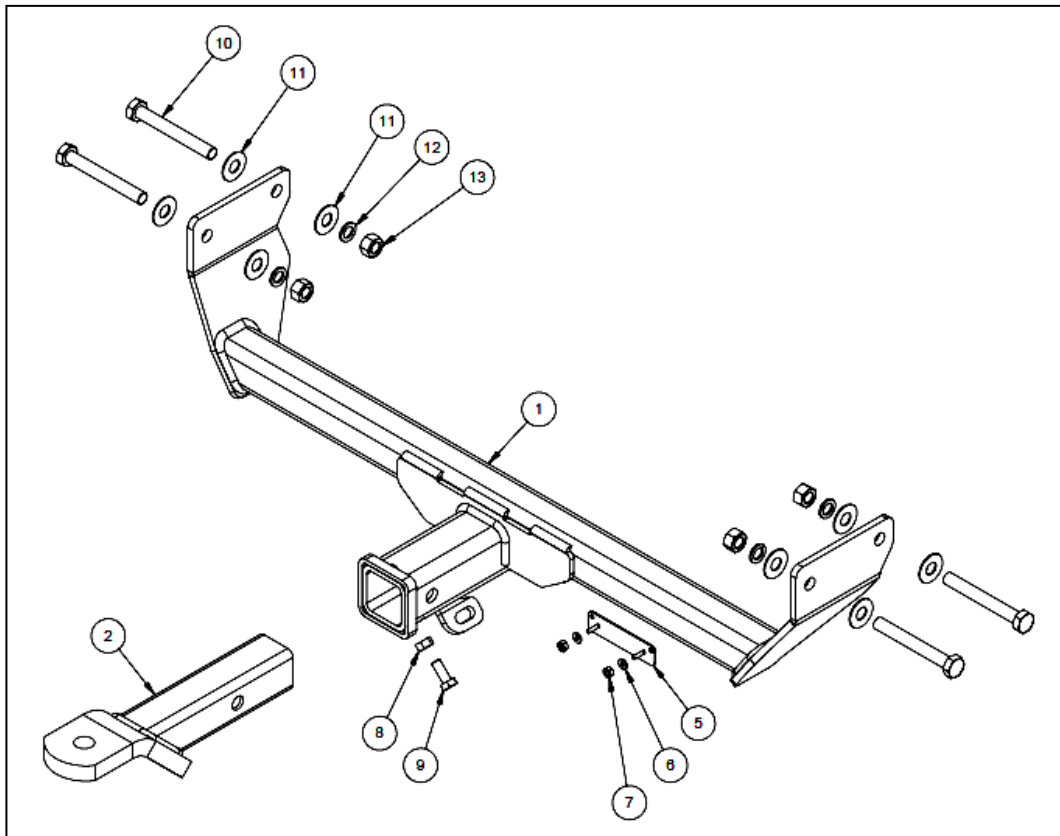
We recommend to remove Tow Ball Mounts (TBM's or lugs) when not being used for any considerable length of time. So as to avoid injury, when not towing it is suggested that the tongue, Pull Pin and R-clip are removed then stored in a safe, clean and dry place, away from excessive moisture.

Hitch Pull Pins and spring "R" clips are regularly checked for proper installation. Replace any worn or defective parts.

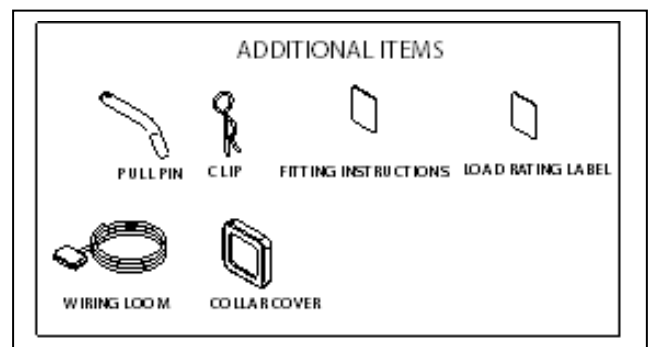
# TRAILBOSS

Towbar Fitting Instructions  
 To Suit JEEP COMPASS 03 / 07 On & JEEP PATRIOT 08 / 07 On  
 Part Number QTJP12L  
 Rating 1500 kg

PLEASE ENSURE THAT ALL INSTRUCTIONS ARE UNDERSTOOD PRIOR TO FITMENT  
 PLACE THESE INSTRUCTIONS IN THE VEHICLES GLOVE BOX AFTER INSTALLATIONS COMPLETE



QTY.	DESCRIPTION	ITEM NO.
1	WELDED ASSEMBLY	1
1	TRAILER BALL MOUNT	2
1	BOLT PACK ASSY	3
1	PLASTIC SHEET BAG 250x350	4
1	PLUG BRACKET	5
2	M4 FLAT WASHER (BLACK)	6
2	NYLOC M4	7
1	NUT M10 x 1.5 Z/P HX NUTS	8
1	BOLT M10-1.50 x 25	9
4	M14 X 110 BOLT STD THREAD	10
8	M14X28X1.6 FLAT WASHER	11
4	M14 X 4.0 X 2.5 Z/P FT SEC SPRING WASHER	12
4	M14 x 2.0 HEX NUT PC8	13



**Cequent Customer Service**  
 Ph: 1800 812 017 Fax: 03 9898 3299  
 Email: info@cequent.com.au  
 Post: PO Box 4050, Dandenong South VIC 3175



**Towbar Fitting Instructions**  
**To Suit JEEP COMPASS 03 / 07 On & JEEP PATRIOT 08 / 07 On**  
**Part Number QTJP12L**  
**Rating 1500 kg**

**PLEASE ENSURE THAT ALL INSTRUCTIONS ARE UNDERSTOOD PRIOR TO FITMENT**  
**PLACE THESE INSTRUCTIONS IN THE VEHICLES GLOVE BOX AFTER INSTALLATIONS COMPLETE**

**Note; The towbar can be fitted without removing the bumper, but for ease of fitment and bumper cut out, it's advisable to remove.**

**Removal Of Bumper:**

1. Remove two tags on rear of bumper ( if applicable) Compass model only, not required for Patriot model.
2. For Compass &/or Patriot models( If applicable) Remove screws and scrivets from inner wheel arches LH & RH sides of vehicle.
3. Remove scrivets from along front section of bumper.
4. Remove scrivets from underside of bumper LH & RH sides of vehicle.
5. Disconnect reverse sensor connection plug. ( If fitted )\_Disconnect reflector tail light connection plug.
6. Remove bumper from vehicle, place on suitable stand.

**Cut out of Bumper:**

7. **( Bumper cut out for Compass only – up to 12 / 2011 )**  
Cut out 80mm wide x 60mm in height from bottom edge, centre line of bumper.
8. **( Bumper cut out for Patriot only )**  
Cut out 80mm wide x 15mm in height from bottom edge, centre line of bumper.
9. **( Bumper cut out for Compass 01 / 2012 onwards only )**  
Find centre line of bumper, measure and mark out horizontal line 30mm from folded edge of bumper. Measure equally 40mm both sides of centre line, mark out verticle lines 135mm in height from the 30mm (folded edge) line.  
Cut out this rectangular section. ( 80 wide x 135 high ) with suitable sawing device.
10. Neatly file down sides and edges square and remove any burrs, before adding rubber trim.

**Additional Plug Plate mounting holes:**

11. Measure 30mm across from edge of previous cut out, mark a verticle line, then measure across 69mm mark another line.
12. Next measure 95mm up from folded edge of bumper, mark horizontal lines. Drill two 5mm holes through bumper.

**Fitment of towbar:**

13. Lift towbar into position, making sure arms are on inner faces of chassis wall. Line up holes in side arm with holes in chassis.
14. Insert 2 – M14 bolts & flat washers to LH & RH sides of vehicle, secure with M14 flat washer, spring washer and nuts.
15. Tighten to the torque specifications, listed on page 1.
16. Refit bumper in reverse order of fitment.
17. Tow rating labels provided, to be affixed onto inside panel of driver's side door, shown on page 1.
18. Attach additional items to towbar, as shown from assembly diagram, on page 2.



Wiring Loom Fitting Instructions  
To Suit Jeep Compass MY12  
Part Number 100786-WL

Wiring Loom Installation Instructions

Jeep Compass  
(MY12 01/2012 – Onwards)  
Part No: 100786-WL  
ECU: 04826

Tail Harness Length Required: 1200mm  
RPA Override Switch Part No: 04848 (If Fitted)

Wiring Loom Installation Time: Approx 45 Mins



Wiring Loom Fitting Instructions  
To Suit Jeep Compass MY12  
Part Number 100786-WL

1. In the luggage compartment, remove the floor cover.
2. Remove the rear luggage compartment trim by first removing the two cargo hooks and pulling in an upwards direction.
3. Remove both the RHS and LHS luggage compartment cargo hooks.
4. On the LHS of the rear passenger's side, remove the door sill trim.
5. On the RHS of the rear passenger's side, dislodge the door sill trim.
6. On the LHS of the front passenger's side, remove the 'B' pillar / door sill trim.
7. In the luggage compartment, remove the LHS luggage compartment trim.

**Repeat for the RHS.**

8. Inside the luggage compartment, on the LHS rear quarter panel, drill out the existing grommet hole to Ø30mm using a step drill.
9. File down any rough edges and spray with rust inhibitor.
10. In the LHS of the luggage compartment, following the table below, connect the ezy-tap to the corresponding vehicle wires, and then connect the trailer patch terminal to the ezy-tap.

Function	Trailer Patch	Vehicle Connector
L.IND	YELLOW/BLACK	GREEN/RED
REVERSE	BLACK/WHITE	WHITE/LIGHT GREEN
TAIL	BROWN/BLACK	WHITE/PURPLE
BRAKES	RED/BLACK	WHITE/ORANGE

11. Connect the trailer harness ground ring terminal to the vehicle grounding point.
12. Connect the trailer harness 12-way connector to the ECU (04826).
13. Using double sided tape, adhere the ECU to a suitable location on the vehicle sheet metal.
14. Route the 'ORANGE' power wire along the LHS through the luggage compartment following the existing vehicle harness towards the front of the vehicle.
15. Continue to route the 'ORANGE' power wire along the LHS of the rear passenger side, following the existing vehicle harness.
16. Secure the 'ORANGE' power wire to the existing vehicle harness using cable ties (not supplied).



Wiring Loom Fitting Instructions  
To Suit Jeep Compass MY12  
Part Number 100786-WL

17. Continue routing the 'ORANGE' power wire along the LHS of the front passenger side, following the existing vehicle harness.
18. Secure the 'ORANGE' power wire to the existing vehicle harness using cable ties (not supplied).
19. On the LHS of the lower dash, remove the kick panel trim.
20. Following the table below, connect the ezy-tap to the RED / WHITE wire, and then connect the power wire terminal to the ezy-tap.

Function	Trailer Patch	Vehicle Connector
POWER	ORANGE	RED / WHITE

21. In the luggage compartment, route the trailer harness (P/No: 100786-WL) from the LHS towards the RHS tail light.
22. On the RHS luggage compartment, following the table below, connect the ezy-tap to the corresponding WHITE / YELLOW wire, and then connect the trailer patch terminal to the ezy-tap.

Function	Trailer Patch	Vehicle Connector
R.IND	GREEN / BLACK	RED / WHITE

23. Mount the trailer socket to the towbar mounting bracket using M4 fasteners (not supplied).
24. Route the tail harness (tail length 1200mm) towards and up through the previously drilled out hole.
25. Ensure the tail harness grommet is seated correctly and makes a good seal.
26. Secure the grommet in place using cable ties (not supplied).
27. Connect the tail harness 8-way connector to the Trailer Patch 8-way mating connector.
28. Test the Trailer Harness function using a light board or multimeter.
29. Secure all harnesses using cable ties (not supplied).
30. Re-fit removed parts and secure all fasteners, ensuring there are no squeaks or rattles.
31. Place the instructions in the glove box after fitment.