

TRAILBOSS

Towbar Fitting Instructions To Suit KIA 08/2004-ON Part Number QTKM11L Rating 1500 kg

WARNING:

Do not, drill, cut, weld or otherwise modify the towbar.

If you are using electric welding on a motor vehicle, **always** check that the vehicle is not equipped with electronic engine or instrument management equipment. Failure to do so could **destroy** any onboard **computers**. If in doubt, check with the vehicle's manufacturer.

MAX TOWING CAPACITY 1500KG



CAUTION TWO PERSON LIFT REQUIRED TO FIT THIS PRODUCT

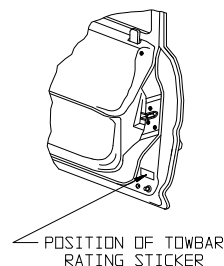
TOOLS REQUIRED

14mm Socket Suitable ratchet
16mm Socket Long extension
Large blade Screwdriver
CRC Spray Masking tape

1. Ensure all items have been included.
2. Remove shipping hook from underside of chassis rail located on the driver's side of the vehicle then discard.
3. Remove plastic stickers covering captive nuts on underside & side of chassis rails each side.
4. Mark out then cut underside of bumper as shown in **figure 1** if fitting to Hyundai Tucson or **figure 2** if fitting to Kia Sportage.
5. Remove then discard M10 X 30 bolts in underside & side of chassis rails each side.
6. Remove three most rear exhaust hanger rubbers then let the muffler hang (**to aid removal of muffler from rubber hangers spray rubbers with CRC**).
7. Offer towbar to chassis rails aligning holes in side plates with captive nuts in chassis rails fit all bolts, flat & spring washers as per diagram loosely.
8. **Models with no captive nuts on verticle face – (Remove tape from hole)** Fit tapped pl & wire through large hole in horizontal face (forward of towbar) secure with M10 x 35 -1.5p bolts.
9. Tighten all bolts to torque listing below.
10. Refit rear muffler
11. Towbar rating sticker to be conspicuously located on inside rear end of the driver's door.
(See diagram below)

RECOMMENDED ASSEMBLY TORQUE LISTING

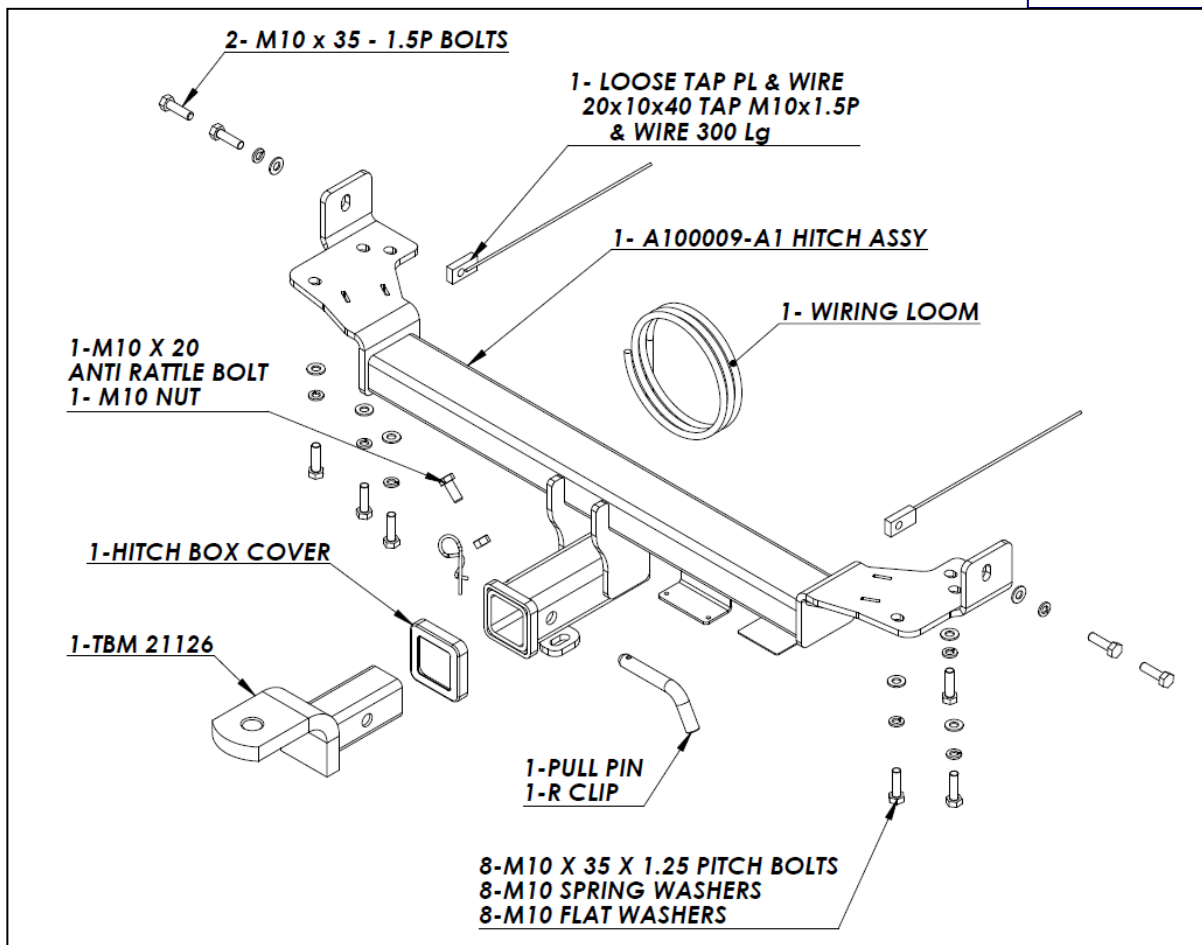
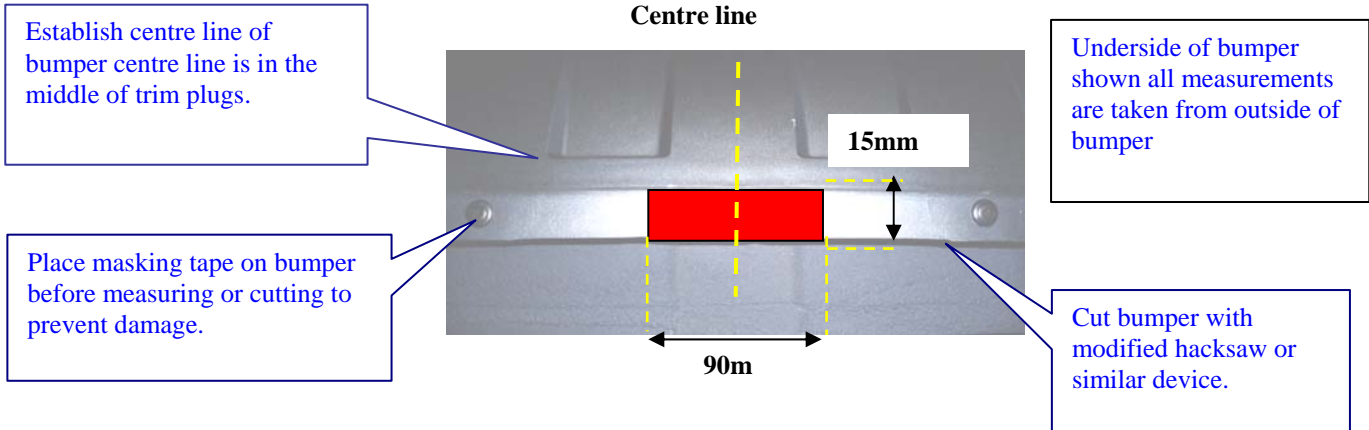
<u>Diameter</u>	<u>Grade 8.8 Bolt</u>
	Nm
M6	9.5
M8	21.7
M10	43.4
M12	77.3
M16	189.8



TRAILBOSS

Towbar Fitting Instructions
 To Suit KIA 08/2004-ON
 Part Number QTKM11L
 Rating 1500 kg
 Darkened area to be removed

Fig 1 KIA SPORTAGE BUMPER CUT



FOR TOWING PURPOSES ONLY
 For towing capacity details please refer to vehicle owner's manual or to the manufacturer.
Overloading can void your warranties.



Wiring Loom Fitting Instructions
To Suit Kia KM Sportage
Part Number 100009-WL

Wiring Loom Installation Instructions

Kia Km Sportage
Part No: 100009-WL

Tail Harness Length Required: 1200mm
RPA Override Switch Part No: 04848 (If Fitted)

Wiring Loom Installation Time: Approx 15 Mins



Wiring Loom Fitting Instructions
To Suit Kia KM Sportage
Part Number 100009-WL

1. Remove the LHS & RHS tail light by first removing the two screws.
2. Disconnect the tail light connectors on the LHS & RHS.
3. On the LHS of the tail light, connect the trailer patch 6-way male connectors (P/no: 100009-WL) to the vehicle's 6-way female connectors.
4. Route the trailer patch behind the rear bumper from the LHS towards the RHS tail light.
5. On the RHS of the tail light, connect the trailer patch 6-way male connectors to the vehicle's 6-way female connectors.
6. Mount the trailer socket to the tow bar mounting bracket using M4 fasteners (not supplied).
7. Route the tail harness (tail harness 1200mm) towards the trailer patch 8-way connector.
8. Connect the trailer harness 8-way connector to the tail harness mating connector.
9. Waterproof the connectors using electrical grease or silicone.
10. Test the Trailer Harness function using a light board or multimeter.
11. Secure all harness using cable ties (not supplied).
12. Re-fit all removed parts and secure all fasteners, ensuring there are no squeaks or rattles.
13. Place the instructions in glove box after fitment.



FITTING INSTRUCTIONS

Silent Anti-Rattle Hitch Pin (PR0001)

• These fitting instructions are supplied to ensure understanding of how the HITCH PIN should be fitted and used correctly.

• Once installed, we recommend **ALL** instructions are kept and placed in the vehicle glove box.

NOTE: Routine maintenance and inspection of the towbar & HITCH PIN is required. Regularly inspect for wear and check the tightness of the Hitch Pin. Follow instructions below to retighten the nut when necessary.

***Do not tow with your vehicle if the R CLIP or the HITCH PIN is loose or missing. Replacement parts are available from your Pro Series Distributor.**

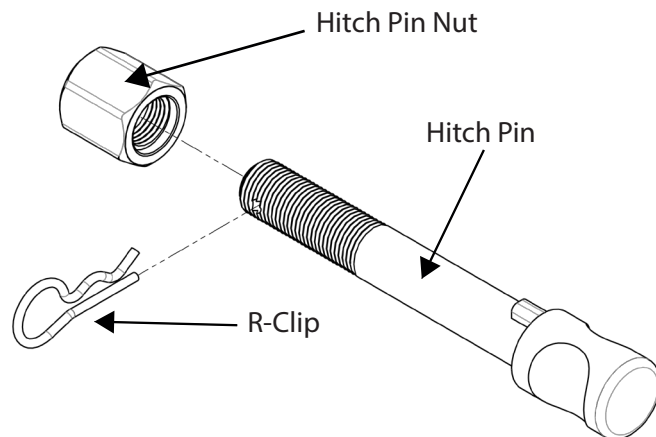


Fig 1. Silent Anti-Rattle Hitch Pin assembly

STEP 1

Insert Trailer Ball Mount (TBM) into towbar HITCHBOX, aligning hole in TBM SHANK with hole in HITCHBOX (Fig 2).

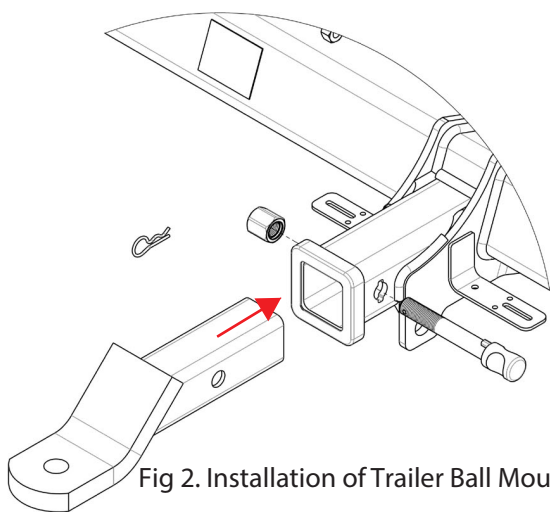


Fig 2. Installation of Trailer Ball Mount

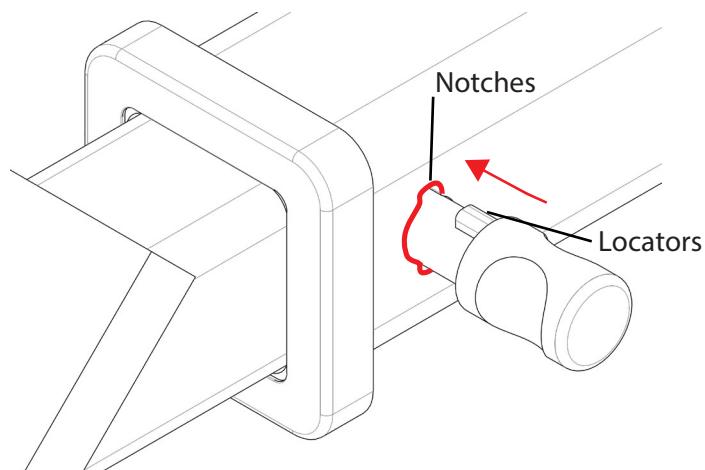


Fig 3. Silent Anti-Rattle Hitch Pin orientation

STEP 2

Insert HITCH PIN through hole in HITCHBOX and hole in TBM SHANK; ensure the LOCATORS are inserted into the NOTCHES in the HITCHBOX (Fig. 3).

STEP 3

Screw HITCH PIN NUT onto HITCH PIN ; tighten HITCH PIN NUT until finger tight, ensuring TBM is restrained from movement.

STEP 4

Tighten HITCH PIN NUT by turning nut a further 1/8th of a turn in the clockwise direction using a 24mm spanner (Fig. 4).

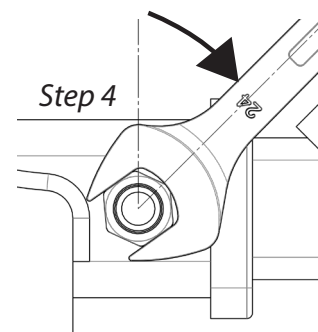


Fig 4. Tightening of Silent Anti-Rattle Hitch Pin Nut

STEP 5

Install HITCH PIN R CLIP through the hole on the HITCH PIN (Fig. 1).