

TRAILBOSS

Towbar Fitting Instructions
To Suit **QTKM14L**
Part Number **KIA SORENTO 09/2012**
Rating **2500/150 kg**

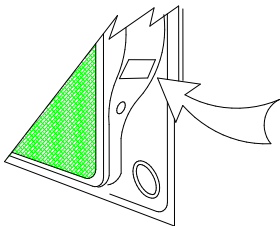
PLACE THESE INSTRUCTIONS IN THE VEHICLE'S GLOVEBOX AFTER INSTALLATION IS COMPLETE

WARNING:

1. Do not, drill, cut, weld or otherwise modify the tow bar.
2. If you are using electric welding on a motor vehicle, **always** check that the vehicle is not equipped with electronic engine or instrument management equipment. Failure to do so could **destroy** any onboard computers. If in doubt, check with the vehicle's manufacturer.
3. The high tensile fasteners supplied with this product were used to achieve the specified rating. If replacement is required ensure that fasteners of the same rating & quality are used. Contact an authorised **Trailboss** dealer if further information is required.

General:

1. Ensure all hardware items have been included refer to assembly diagram.
2. It is recommended that the instructions are read through and completely understood before making any attempt to fit this product.
3. Be wary of any changes to vehicle designs or other accessories that may conflict with the installation of this product.
4. Before drilling ensure that the area is clear of fuel, electrical & other components.
5. All holes drilled into the body panels shall have all burrs & swarf removed then coated with a suitable rust preventative paint.
6. For vehicles that require the bumper to be cut. Ensure cut out area is in correct position on the vehicle prior to cutting the bumper.
7. The high tensile fasteners supplied with this product were used to achieve the specified rating. If replacement is required ensure that fasteners of the same rating & quality are used. Contact an authorized **Trailboss** dealer if further information is required.
8. Ensure that all hardware is fastened to torque list below check fasteners on regular basis.
9. Tow bar load rating sticker provided with this product shall be conspicuously located on inside rear end of the driver's door. **(See diagram below)**.
10. Trailboss recommends that you check your tow ball to ensure that it complies with the Australian standards **AS 4177.2**.
11. **PLEASE NOTE:** It is advised to remove your lug or tbn when not actually towing so as to produce a clear view of the vehicles registration plate if obscured, and to also provide maximum available departure angle
12. Pull Pin must be fit in down position.



Place load rating sticker
inside driver's door here

FOR TRAILER TOWING PURPOSES ONLY
For towing capacity details please refer to vehicle owner's manual or to the manufacturer. Overloading can void your warranties.

RECOMMENDED ASSEMBLY TORQUE LISTING

Diameter	Grade 8.8 Bolt
M6	9.5 Nm
M8	21.7 Nm
M10	43.4 Nm
M12	77.3Nm
M14	146 Nm
M16	189.8 Nm

Tow bar Maintenance and Care.

Trailboss recommends that bolt torque's, as listed below, are routinely and regularly inspected and checked for correct tension. Replace any worn or defective parts.

We recommended to remove Tow Ball Mounts (TBM's, tongues or lugs) when not being used for any considerable length of time.

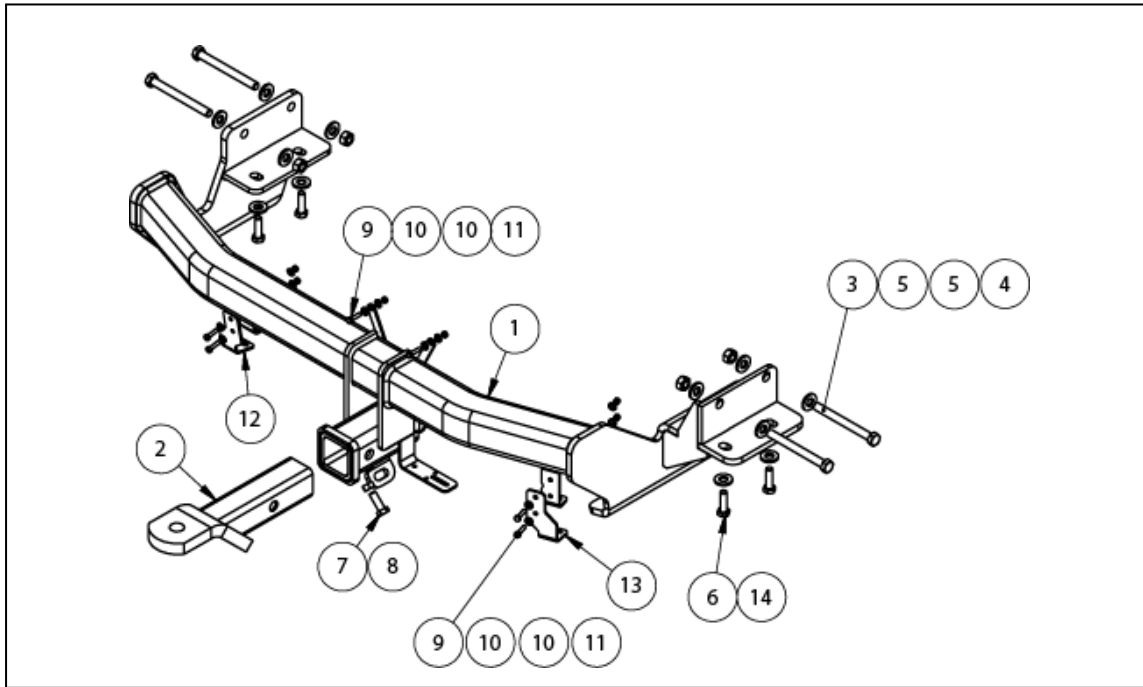
So as to avoid injury, when not towing it is suggested that the tongue, Pull Pin and R-clip are removed then stored in a safe, clean and dry place, away from excessive moisture.

Hitch Pull Pins and spring "R" clips are regularly checked for proper installation. Replace any worn or defective parts.

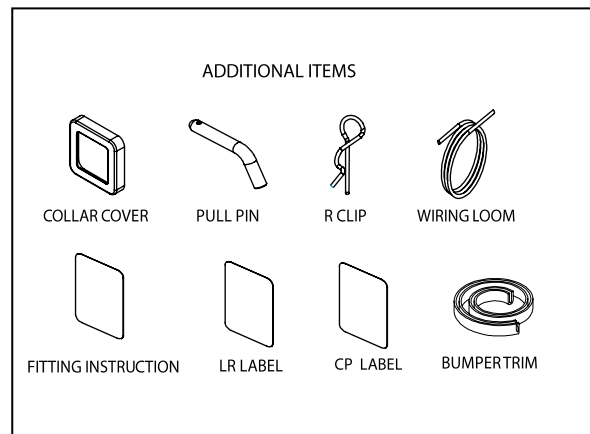
TRAILBOSS

Towbar Fitting Instructions
 To Suit **QTKM14L**
 Part Number **KIA SORENTO 09/2012**
 Rating **2500/150 kg**

PLACE THESE INSTRUCTIONS IN THE VEHICLE'S GLOVEBOX AFTER INSTALLATION IS COMPLETE



QTY	DESCRIPTION	ITEM NO.
1	TOWBAR WELDED ASSY	1
1	T.B.MOUNT	2
4	BOLT HEX HD M12x120x1.25P	3
4	M12x1.25 HEX NUT PC8	4
8	WASHER FLAT 1/2"x1 1/8"x1/8"	5
4	SET SCREW HEX HD M10x35x1.25P	6
1	SET SCREW HEX HD M10x30x1.5P	7
1	HEX NUT M10x1.5	8
6	SET SCREW HEX HD M5x20x0.8P	9
12	WASHER FLAT M6x12.5x1.2	10
6	NUT NYLOC M5-0.8 Z/P	11
1	BUMBER ADAPTER PASSENGER SIDE	12
1	BUMBER ADAPTER DRIVERS SIDE	13
4	WASHER FLAT M10x25.4x3	14



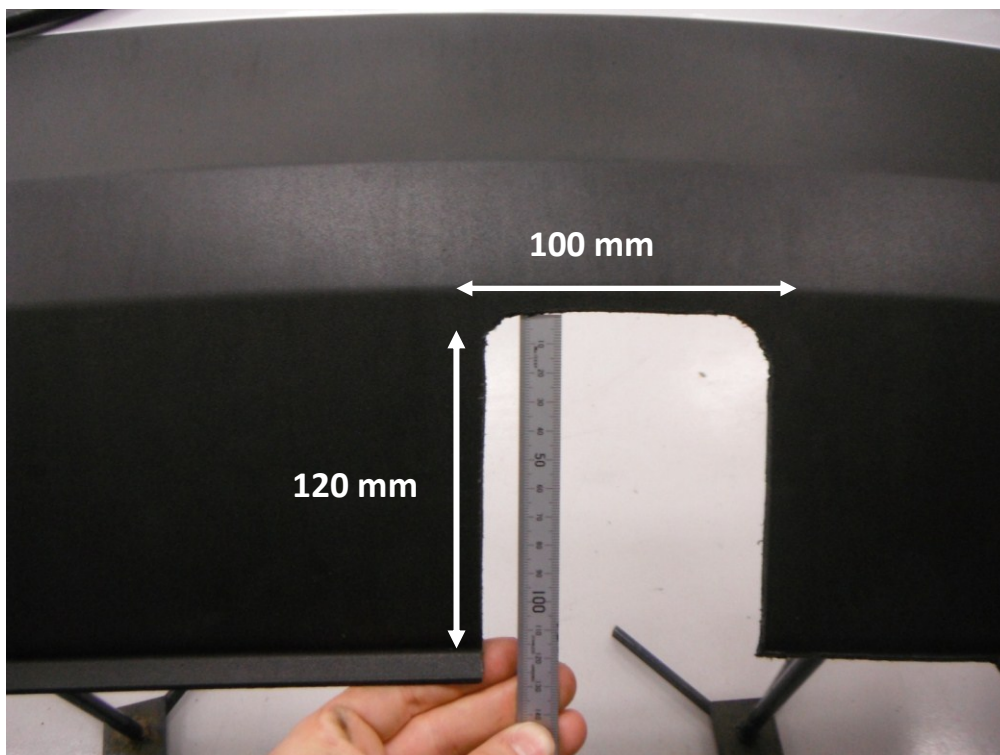


Towbar Fitting Instructions
To Suit **QTKM14L**
Part Number **KIA SORENTO 09/2012**
Rating **2500/150 kg**

PLACE THESE INSTRUCTIONS IN THE VEHICLE'S GLOVEBOX AFTER INSTALLATION IS COMPLETE

INSTRUCTION:

1. Open boot and remove 2xScrews from the LHS Tail Light. Repeat for RHS.
2. Remove LHS Tail Light and disconnect the connector. Repeat for RHS.
3. Remove 2x Scrivets and 1x Screw from inside the LHS Tail Light Cavity. Repeat for RHS.
4. Remove 3x Screws and 1x Scrivet from inside the LHS Wheel Arch. Repeat for RHS.
5. Remove 3x Screws from underneath of Bumper on the RHS. Repeat for the LHS.
6. Remove 2 x Bolts from underneath vehicle on RHS back panel. Repeat for LHS.
7. Disconnect the wiring connector near the LHS Chassis Rail at the rear of the vehicle. If fitted, remove reverse sensor and rear view camera connectors. Carefully remove Bumper and place in a safe area.
8. Remove Rubber Grommet from underneath of both Chassis Rails. Offer Towbar to vehicle. The Towbar will sit on the outer face of the LHS Chassis Rail, and the inner face of the RHS Chassis Rail. Loosely secure the Towbar using the fastener sequence as seen on page 2. Discard loose Bumper Brackets (not included for this model). Tighten to torque specifications on page 1.
9. Remove Impact Beam from Bumper by dislodging 5x Scrivets and Wiring Plugs. Retain 2x Scrivets .
10. Cut Bumper as per template . Re-attach bumper using steps 1-7 in reverse. Use two retained Scrivets to attach Bumper to Towbar.



BUMPER CUT

NOT TO SCALE

Rev: B

Issue Date: **20-02-2013**

Cequent Customer Service
Ph: 1800 812 017 Fax: 03 9898 3299
Email: info@cequent.com.au
Post: PO Box 4050, Dandenong South VIC 3175



Wiring Loom Fitting Instructions
To Suit Kia Sorento MY12
Part Number 100873-WL

Wiring Loom Installation Instructions

Kia Sorento MY12
Part No: 100873-WL

Tail Harness Length Required: 400mm
ECU Required: WLT030

Wiring Loom Installation Time: Approx 30 Mins

Wiring Loom Fitting Instructions To Suit Kia Sorento MY12 Part Number 100873-WL

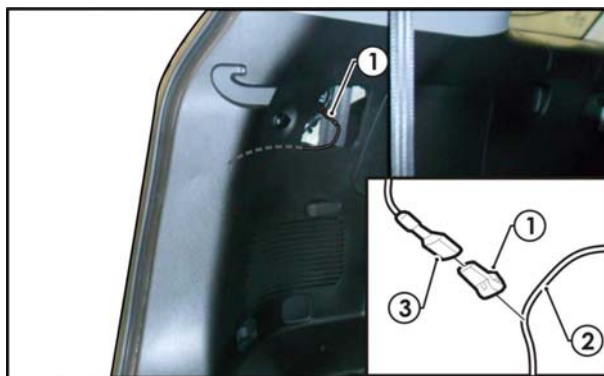
1. Remove the rear bumper fascia by removing all fasteners.
2. In the luggage compartment, remove the tool compartment carpet cover.
3. Remove the rear luggage compartment trim by removing the three screws.
4. On the LHS of the luggage compartment, remove the screw and remove the access panel.
5. Dislodge the LHS luggage compartment trim.
6. Remove the LHS tail light by first removing the two screws and disconnect the tail light assembly connectors.

Repeat for the RHS.

7. Inside the luggage compartment, pull the LHS tail light harness connector and grommet inside the vehicle through the grommet hole. Connect the trailer patch (100873-WL) connector to the tail light harness connector.
8. Feed the trailer patch (100873-WL) connector & grommet out through the grommet hole.

Note: Ensure when connecting the trailer patch the grommet makes a good seal.

9. On the LHS of the luggage compartment, following the table below, connect the ezy-tap (1) to the vehicle 'BLUE' reverse wire (2), then connect the trailer patch terminal (3) to the ezy-tap (1).



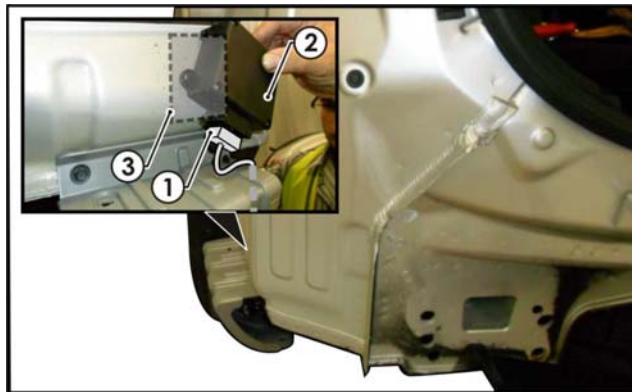
Function	Trailer Patch	Vehicle Connector
REVERSE	BLACK / WHITE	BLUE

10. Using a tek screw, secure the ground ring terminal to the underside of one of the brackets below the LHS tail light.

Wiring Loom Fitting Instructions To Suit Kia Sorento MY12 Part Number 100873-WL

11. Connect the trailer patch 24-way connector (1) to the ECU (WLT030) (2).
12. Apply double sided tape to the ECU (1) and adhere it to the vehicle sheet metal (3) above the LHS spacer bracket as shown.

Note: Ensure the ECU connector orientation is facing downwards.



13. Route the trailer harness along the rear luggage compartment towards the RHS vehicle tail light.
 14. Inside the luggage compartment, pull the RHS tail light harness connector and grommet inside the vehicle through the grommet hole. Connect the trailer patch (100873-WL) connector to the tail light harness connector.
 15. Feed the trailer patch (100873-WL) connector & grommet out through the grommet hole.
- Note: Ensure when connecting the trailer patch the grommet makes a good seal.**
16. On the LHS, connect the 'ORANGE' power wire 1-way connector to its mating 1-way connector.
 17. Route the 'ORANGE' power wire, along the vehicle chassis rail towards the front of the vehicle and up towards the engine bay.
 18. In the engine bay, secure the 'ORANGE' power wire ring terminal to the vehicle's positive battery terminal.
 19. Mount the trailer socket to the tow bar mounting bracket using M4 fasteners (not supplied).
 20. Route the tail harness across the tow bar towards the LHS of the vehicle.
 21. Connect the tail harness (tail length 400mm) 8-way connector to the trailer patch mating 8-way connector.
 22. Waterproof the connectors by applying electrical grease or silicone to the back of each connector.



Wiring Loom Fitting Instructions
To Suit Kia Sorento MY12
Part Number 100873-WL

23. Test the trailer patch function using a light board or multi meter.
24. Secure all harnesses using cable ties (not supplied).
25. Re-fit all removed parts and secure all fasteners, ensuring there are no squeaks or rattles.
26. Place the fitting instructions in the glove box after fitment.