

TRAILBOSS

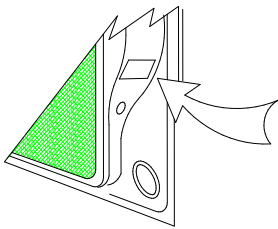
Towbar Fitting Instructions To Suit KIA SORENTO 2009 on Part Number QTKM8L Rating 2500 kg

WARNING:

1. Do not, drill, cut, weld or otherwise modify the tow bar.
2. If you are using electric welding on a motor vehicle, **always** check that the vehicle is not equipped with electronic engine or instrument management equipment. Failure to do so could **destroy** any onboard computers. If in doubt, check with the vehicle's manufacturer.

General:

1. Ensure all hardware items have been included refer to assembly diagram.
2. It is recommended that the instructions are read through and completely understood before making any attempt to fit this product.
3. Be wary of any changes to vehicle designs or other accessories that may conflict with the installation of this product.
4. Before drilling ensure that the area is clear of fuel, electrical & other components.
5. All holes drilled into the body panels shall have all burrs & swarf removed then coated with a suitable rust preventative paint.
6. For vehicles that require the bumper to be cut. Ensure cut out area is in correct position on the vehicle prior to cutting the bumper.
7. The high tensile fasteners supplied with this product were used to achieve the specified rating. If replacement is required ensure that fasteners of the same rating & quality are used. Contact an authorized **Trailboss** dealer if further information is required.
8. Ensure that all hardware is fastened to torque list below check fasteners on regular basis.
9. Tow bar load rating sticker provided with this product shall be conspicuously located on inside rear end of the driver's door. **(See diagram below).**
10. Trailboss recommends that you check your tow ball to ensure that it complies with the Australian standards **AS 4177.2**.
11. **PLEASE NOTE:** It is advised to remove your lug or tbn when not actually towing so as to produce a clear view of the vehicles registration plate if obscured, and to also provide maximum available departure angle



Place load rating sticker
inside driver's door here

FOR TOWING PURPOSES ONLY

For towing capacity details please refer to vehicle owner's manual or to the manufacturer. Overloading can void your warranties.

RECOMMENDED ASSEMBLY TORQUE LISTING

Diameter Grade 8.8 Bolt

M6	9.5 Nm
M8	21.7 Nm
M10	43.4 Nm
M12	77.3Nm
M14	146 Nm
M16	189.8 Nm

Tow bar Maintenance and Care.

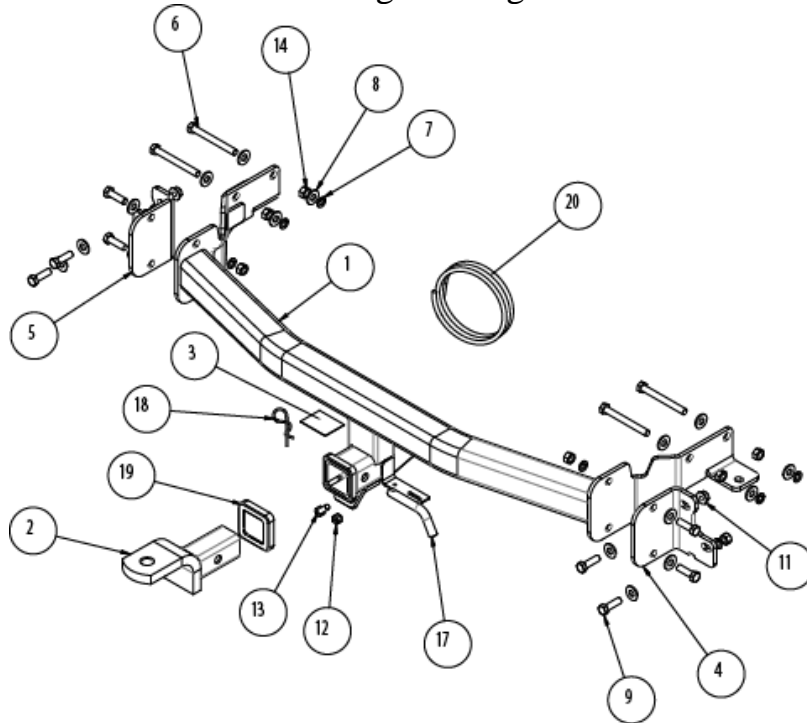
Trailboss recommends that bolt torque's, as listed below, are routinely and regularly inspected and checked for correct tension. Replace any worn or defective parts.

We recommended to remove Tow Ball Mounts (TBM's, tongues or lugs) when not being used for any considerable length of time.

So as to avoid injury, when not towing it is suggested that the tongue, Pull Pin and R-clip are removed then stored in a safe, clean and dry place, away from excessive moisture.

Hitch Pull Pins and spring "R" clips are regularly checked for proper installation. Replace any worn or defective parts.

Towbar Fitting Instructions
 To Suit KIA SORENTO 2009 on
 Part Number QTKM8L
 Rating 2500 kg



ITEMS 14 & 15 ARE NOT SHOWN IN THE DRAWING

Figure 1 – Layout Diagram

ITEM NO.	DESCRIPTION	QTY.
1	WELDED ASSY KIA SORENTO 2010	1
2	T.B.MOUNT	1
3	ACRYLIC COMPLIANCE PLATE	1
4	DRIVER SIDE BRACKET	1
5	PASSENGER SIDE BRACKET	1
6	BOLT M12-1.25x110 GR8.8	4
7	M12 X 4.0 X 2.5 SPRING WASHER	10
8	WASHER M12x28.8x3mm	16
9	BOLT M12-1.75x40 GR8.8	8
10	M12-1.75 Z/P HX NUTS	6
11	M12 x 1.75P WHIZZ NUT	2
12	NUT HX M10 - 1.5 Z/P	1
13	BOLT M10-1.50 x 25	1
14	NUT HX M12 - 1.25 Z/P	4
15	FITTING INSTRUCTIONS	1
16	LOAD RATING LABEL	1
17	PULL PIN	1
18	SPRING COTTER PIN	1
19	HITCH BOX COLLAR COVER	1
20	WIRING LOOM	1

TRAILBOSS

Towbar Fitting Instructions
To Suit KIA SORENTO 2009 on
Part Number QTKM8L
Rating 2500 kg

STEPS TO FIT TOWBAR

1. Remove the Rear Bumper from the vehicle via the following steps:

 *Position the vehicle on to a safe working height on the hoist before commencing fitment.*

- (a) Remove scrivets x 4 from underneath the bumper from the centre portion.
- (b) Remove scrivets x 2 from sides.

Note: Repeat the step for passenger side.

- (c) Remove wheel arch screws x 3 and bolt x 1.

Note: Repeat the step for passenger side.

- (d) Remove the light and remove scrivets x 2 and screw x 1 from inside the light.

Note: Repeat the step for passenger side.

- (e) Remove the reflectors from both sides.

Note: Before removing the reflectors, also remove scrivets x 2 from inside the bumper (right behind the reflector – one on driver side and one on passenger side).

- (f) Flex the bumper out from the sides and pull rearward.

- (g) Remove the exhaust hangers x 2 on driver's side.

- (h) Locate the towbar on the vehicle, using the relevant fasteners, as shown in Figure 1.

Note: Put the longer bolt through the heat shield on the driver side.

- (i) Torque the towbar and the back plate brackets to the torque requirements mentioned on page 1.

- (j) Cut the bumper, as shown in the illustration in Figure 2.

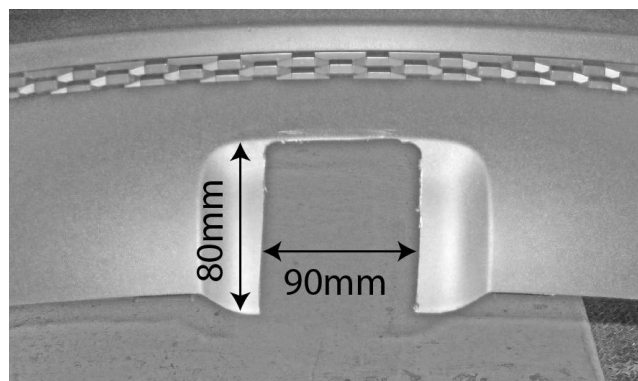


Figure 2 – Bumper Cut out Diagram.



Towbar Fitting Instructions
To Suit **KIA SORENTO 2009** on
Part Number **QTKM8L**
Rating **2500** kg

- (k) Refit the exhaust muffler hangers and the bumper in the reverse order.
- (l) Affix the load rating label, as shown on page 1.



Wiring Loom Fitting Instructions
To Suit Kia XM Sorento
Part Number 100221-WL

Wiring Loom Installation Instructions

Kia XM Sorento
Part No: 100221-WL

Tail Harness Length Required: 1200mm
ECU Required: 04826
RPA Override Switch Part No: 04848 (If Fitted)

Wiring Loom Installation Time: Approx 40 Mins



Wiring Loom Fitting Instructions
To Suit Kia XM Sorento
Part Number 100221-WL

1. In the luggage compartment area, remove all the required trims to gain access to the LHS and RHS tail light connectors (inclusive of the rear seats blocking the LHS and RHS luggage compartment trims).
2. Remove the RHS rear passenger and driver's door sill trims. Dislodge the RHS lower 'B' pillar trim. Remove the driver's kick panel.
3. Remove the driver's lower garnish trim.
4. Outside at the rear of the vehicle, remove the LHS and RHS tail light assembly by removing its fasteners.
5. Near the towbar area, mount the Tail Harness (tail length 1200mm) socket onto the mounting bracket using M4 fasteners (not supplied). Route the Tail Harness along the towbar towards the RHS rear quarter of the vehicle.
6. Locate the RHS rear quarter grommets. Remove the LHS grommet and route the tail harness (tail length: 1200mm) through. Ensure the Tail Harness grommet is secured correctly into the vehicle grommet hole by adjusting into position and securing in place with cable ties (not supplied).
7. **Note: If the vehicle has incandescent tail lamps, patch the 6-way Connectors into the tail lights. If the vehicle has LED tail lamps, patch the 8-way connectors in between.** Connect the vehicle connector into the Trailer Patch Harness (P/No: 100221-WL) connector and then feed the Trailer Harness connectors through the RHS tail light cavity and outside the vehicle.
8. Route the Trailer Harness LHS trailer patch across to the LHS tail light area of the vehicle.
9. On the LHS of the vehicle, connect the EZ tap scotch lock onto the vehicle harness reverse red wire by connecting the Trailer Harness terminal onto the EZ tap. To locate the correct red reverse wire, turn the ignition to the 'ON' position and select reverse on the gear stick. Using a multimeter, locate the correct wire.
10. **Note: If the vehicle has incandescent tail lamps, patch the 6-way Connectors into the tail lights. If the vehicle has LED tail lamps, patch the 8-way connectors in between.** Connect the vehicle connector into the Trailer Patch Harness (P/No: 100221-WL) connector and then feed the Trailer Harness connectors through the LHS tail light cavity and outside the vehicle.
11. Connect the Trailer Harness ECU 12-way female connector and plug it into the ECU (P/No: 04826). Then secure the ECU using double sided tape on to the flat sheet metal area outer side (next to the side cavity and below the tail light cavity area. Mount underneath the vehicle harness).
12. Connect the Tail Harness connector 8-way male connector to the trailer patch harness 8-way female connector.
13. Secure the Trailer Harness ring terminal onto the grounding point located above at the RHS wheel arch area near the RHS rear passenger door.



Wiring Loom Fitting Instructions
To Suit Kia XM Sorento
Part Number 100221-WL

14. Route the trailer harness orange wire along the vehicle towards the driver's foot well area.
15. Connect the add-a-fuse harness into the fuse panel area in between the 25amp and 15 amp fuses (on the fuse panel bottom RHS, second slot across and then one up).
16. If the vehicle is the high spec model, remove the fuse from the fuse panel and connect it into the add-a-fuse lower slot. Connect the add-a-fuse harness to the fuse panel bottom RHS, second slot and then one up.
17. Connect the add-a-fuse to the Trailer Harness.
18. On the outside, secure the harness to the towbar using cable ties (not supplied).
19. Test the Trailer socket using a light board or multi-meter.
20. Secure the all harnesses using cables ties (not supplied).
21. Refit all removed parts and secure all fasteners.
22. Place instructions in glove box after fitment.