



Towbar Fitting Instructions
To Suit FORD ESCAPE MAZDA TRIBUTE 02-2001 on
Part Number QTMA650L
Rating 1600kg 6 CYL
1000kg 4 CYL

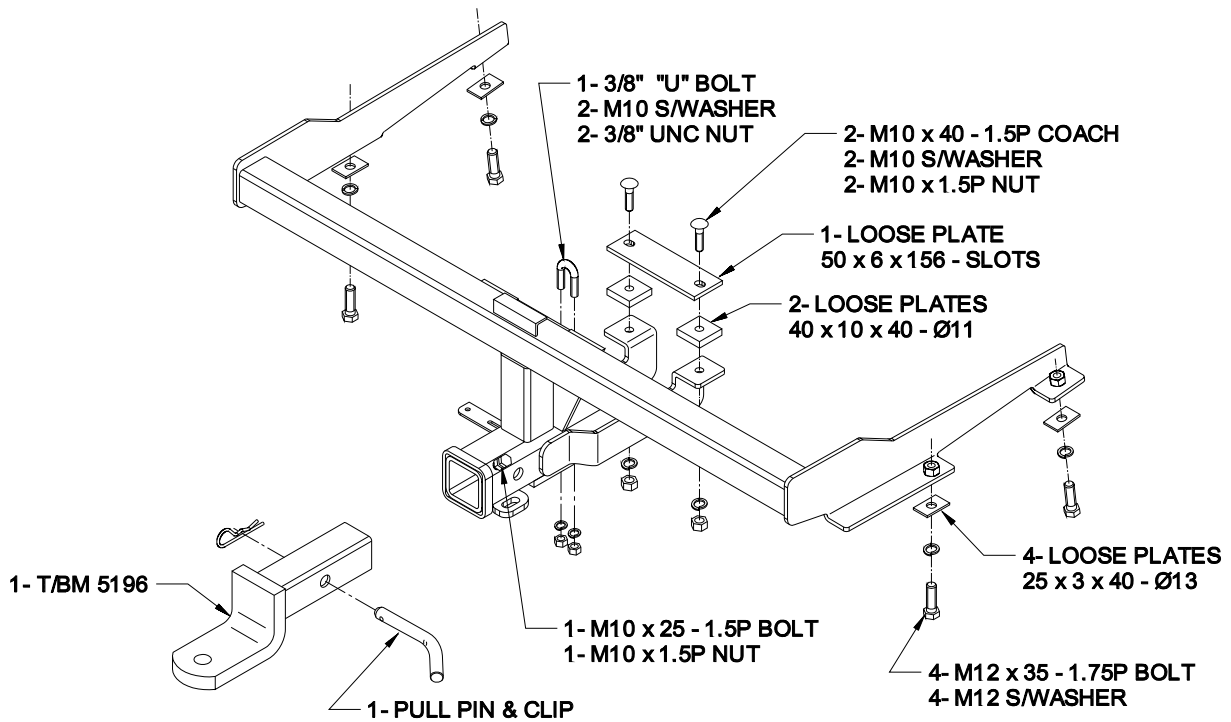
1. Ensure all hardware items have been included.
2. Remove spare wheel.
3. Remove rear bumper bar.
- 3A From under tailgate remove 4 x self tappers.
- 3B Remove 1 x self taper fixing mud flap driver & passenger side (Ford x 1).
- 3C Remove 2 self tappers joining front edge of bumper to wheel arch's.
- 3D Remove 2 x 8 mm nuts holding bumper to rear panel.
- 3E Remove rear bumper bar.
4. Remove impact beam and discard.
5. Remove rear muffler from last 2 rubber hangers.
6. Remove pop rivet from rear muffler heat shield to gain access to forward most mounting hole.
7. Fit towbar arm into chassis rails and align with holes from under vehicle.
8. Fit 4 x M12 x 35 bolt 1.75p, spring washer and loose plates semi tight.
9. Fit "U" Bolt supplied to flat tail and shipping hook.
10. Using holes in tail as guide, drill 2- Ø11 holes.
11. Fit 2- 40 x 10 x 40 loose plates, in between floor and tail arm aligning with holes drilled.
12. Fit loose plate inside wheel well with M10 x 40 Coach bolts, spring washer and nuts.
13. Tighten as per torque listing below.
14. Cut bumper as per diagrams
15. Refit bumper in reverse of steps 3
16. Refit rear muffler heat shield with pop rivet supplied.
17. Refit muffler to rubber hangers
18. Refit spare wheel.

RECOMMENDED ASSEMBLY TORQUE LISTING

<u>Diameter</u>	<u>Grade 8.8 Bolt</u>
	Nm
M6	9.5
M8	21.7
M10	43.4
M12	77.3
M14	121.0
M16	189.8

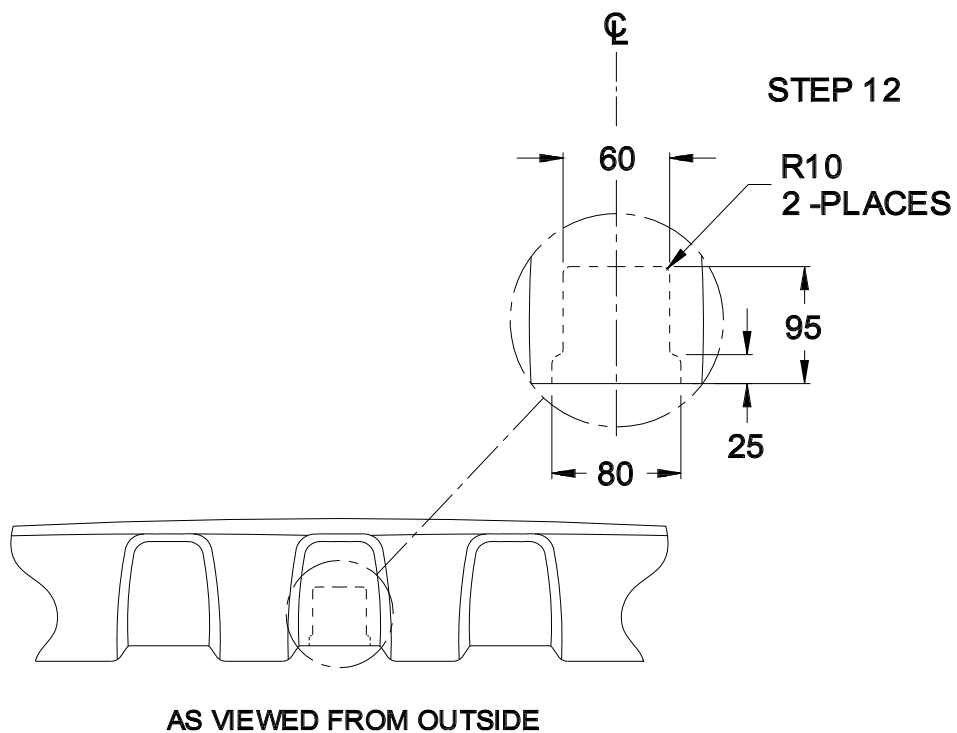
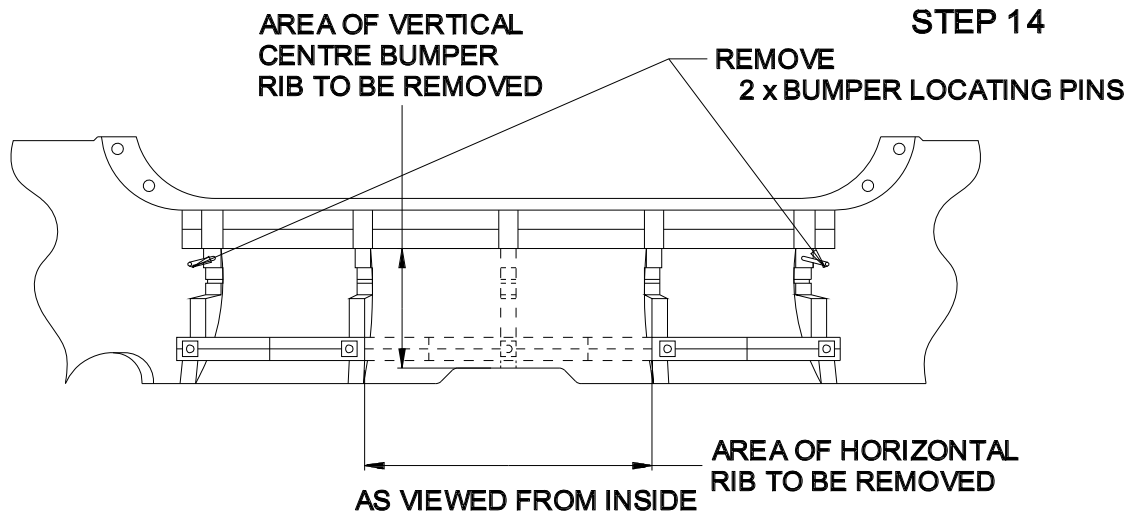
TRAILBOSS

Towbar Fitting Instructions
To Suit FORD ESCAPE MAZDA TRIBUTE 02-2001 on
Part Number QTMA650L
Rating 1600kg 6 CYL
1000kg 4 CYL



TRAILBOSS

Towbar Fitting Instructions
To Suit FORD ESCAPE MAZDA TRIBUTE 02-2001 on
Part Number QTMA650L
Rating 1600kg 6 CYL
1000kg 4 CYL





Wiring Loom Fitting Instructions
To Suit Ford Escape / Mazda Tribute
2000 – 2007 / 2008 Onwards
Part Number 100027-WL - 100703-WL

Wiring Loom Installation Instructions

Ford Escape / Mazda Tribute
Part No: 100027-WL - 100703-WL

2000 – 2007 (Page 2)
2008 Onwards (Page 3)

Tail Harness Length Required: 1200mm
RPA Override Switch Part No: 04848 (If Fitted)

Wiring Loom Installation Time: Approx. 20 Mins



Wiring Loom Fitting Instructions
To Suit Ford Escape / Mazda Tribute
2000 – 2007 / 2008 Onwards
Part Number 100027-WL - 100703-WL

Page 2 Steps apply to 2000 – 2007 models only:

1. Remove LHS tail light by first removing the two screws.
2. Disconnect 6 way and 2 way connector.

Repeat for the RHS tail light.

3. On the RHS, connect the trailer patch 6-way male connector to vehicle 6-way female connector.
4. Route the trailer patch behind the rear bumper from the RHS to the LHS.
5. On the LHS, connect the trailer patch 6-way male connector to vehicle 6-way female connector.
6. Mount the trailer socket to the tow bar mounting bracket using M4 fasteners (Not supplied)
7. Route the tail harness (tail length 1200mm) along towards the trailer patch 8-way connector.
8. Connect the trailer harness 8-way connector to the tail harness mating connector.
9. Waterproof the connector using electrical grease or silicone.
10. Test the Trailer Harness function using a light board or multimeter.
11. Secure all harness using cable ties (not supplied)
12. Re-fit all removed parts and secure all fasteners, ensuring there are no squeaks or rattles.
13. Place the instructions in the glove box after fitment.



Wiring Loom Fitting Instructions
To Suit Ford Escape / Mazda Tribute
2000 – 2007 / 2008 Onwards
Part Number 100027-WL - 100703-WL

Page 3 Steps apply to 2008 Onwards models only:

1. Remove the rear luggage compartment sun shade cover and then fold the rear seats forward.
2. Release the fir tree clips from the spare wheel cover. Then lift and remove the spare wheel cover.
3. Remove the spare wheel plastic tray by releasing the fastener and then lift and remove the tray.
4. Remove the LHS plastic floor tray by releasing the 2 fasteners and the clip then lift and remove the tray.
5. Remove the rear trim by carefully pulling upwards to release the clips attached to the underside of the trim.
6. Remove the LHS door sill trim by releasing the fastener then pulling upwards to release the clip attached to the underside of the trim.
7. Release the LHS luggage compartment trim by releasing the screw and the clip.
8. Dislodge the LHS luggage compartment trim. Disconnect the cigarette lighter connector. Remove the LHS luggage compartment trim.
9. Drill a Ø30mm hole next to vehicle grommet in centre rear of vehicle spare wheel well. File any rough edges and spray on rust inhibitor.
10. Locate 6-way male break out connector and connect trailer patch (100027-WL) then patch the 8-way female connector to the 8-way male connector.
11. Connect ground ring terminal to the factory grounding point.
12. Mount trailer socket to towbar mounting bracket using M4 fasteners (Not supplied)
13. Route the tail harness (Tail length 1200mm) through the previously drilled out grommet hole.
14. Ensure the tail harness grommet is seated correctly and secured in place using a cable tie. (Not supplied)
15. Test the trailer harness function using a light board or multimeter.
16. Secure all harnesses using cable ties (Not supplied)
17. Refit all removed parts and secure all fasteners, ensuring there are no squeaks or rattles.
18. Place fitting instructions in glove box after fitment.



FITTING INSTRUCTIONS

Silent Anti-Rattle Hitch Pin (PR0001)

• These fitting instructions are supplied to ensure understanding of how the HITCH PIN should be fitted and used correctly.

• Once installed, we recommend **ALL** instructions are kept and placed in the vehicle glove box.

NOTE: Routine maintenance and inspection of the towbar & HITCH PIN is required. Regularly inspect for wear and check the tightness of the Hitch Pin. Follow instructions below to retighten the nut when necessary.

***Do not tow with your vehicle if the R CLIP or the HITCH PIN is loose or missing. Replacement parts are available from your Pro Series Distributor.**

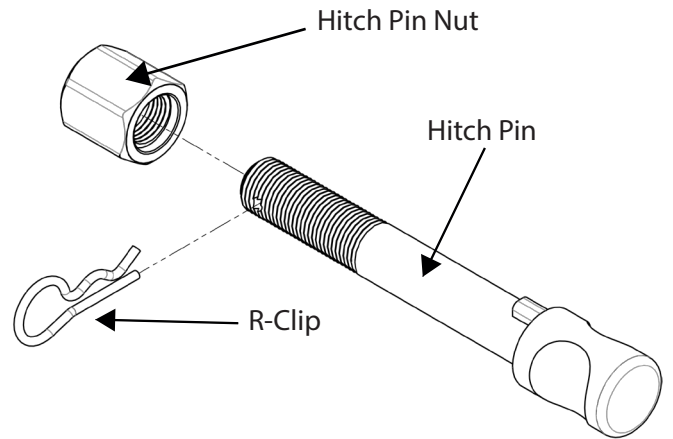


Fig 1. Silent Anti-Rattle Hitch Pin assembly

STEP 1

Insert Trailer Ball Mount (TBM) into towbar HITCHBOX, aligning hole in TBM SHANK with hole in HITCHBOX (Fig 2).

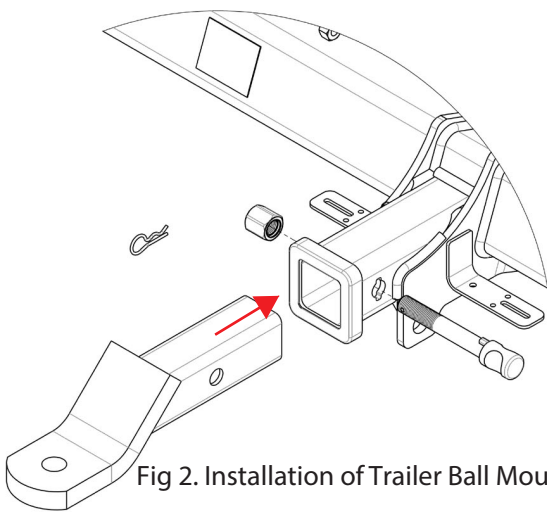


Fig 2. Installation of Trailer Ball Mount

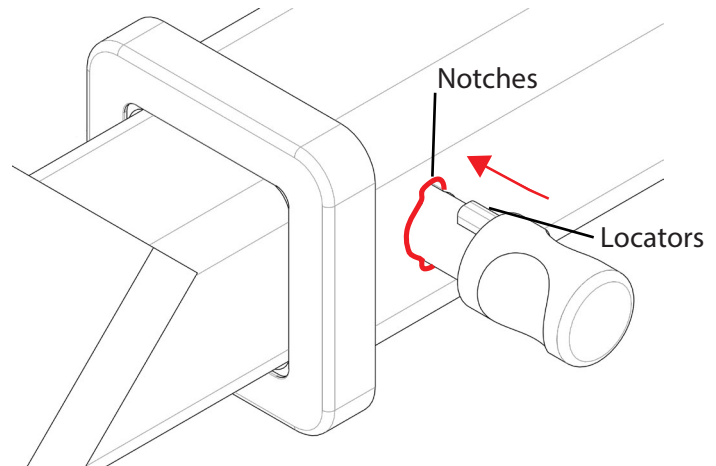


Fig 3. Silent Anti-Rattle Hitch Pin orientation

STEP 2

Insert HITCH PIN through hole in HITCHBOX and hole in TBM SHANK; ensure the LOCATORS are inserted into the NOTCHES in the HITCHBOX (Fig. 3).

STEP 3

Screw HITCH PIN NUT onto HITCH PIN; tighten HITCH PIN NUT until finger tight, ensuring TBM is restrained from movement.

STEP 4

Tighten HITCH PIN NUT by turning nut a further 1/8th of a turn in the clockwise direction using a 24mm spanner (Fig. 4).

STEP 5

Install HITCH PIN R CLIP through the hole on the HITCH PIN (Fig. 1).

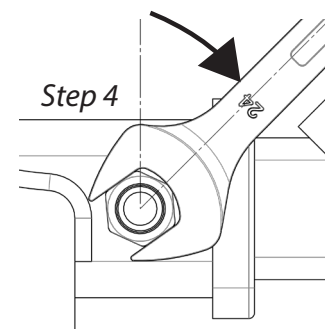


Fig 4. Tightening of Silent Anti-Rattle Hitch Pin Nut