

# TRAILBOSS

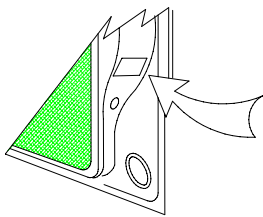
Towbar Fitting Instructions  
To Suit MAZDA CX9 CLASSIC & LUXURY 12-2007 on  
Part Number QTMA652L  
Rating 2000/150 kg

**WARNING:**

1. Do not, drill, cut, weld or otherwise modify the tow bar.
2. If you are using electric welding on a motor vehicle, **always** check that the vehicle is not equipped with electronic engine or instrument management equipment. Failure to do so could **destroy** any onboard computers. If in doubt, check with the vehicle's manufacturer.

**General:**

1. Ensure all hardware items have been included refer to assembly diagram.
2. It is recommended that the instructions are read through and completely understood before making any attempt to fit this product.
3. Be wary of any changes to vehicle designs or other accessories that may conflict with the installation of this product.
4. Before drilling ensure that the area is clear of fuel, electrical & other components.
5. All holes drilled into the body panels shall have all burrs & swarf removed then coated with a suitable rust preventative paint.
6. For vehicles that require the bumper to be cut. Ensure cut out area is in correct position on the vehicle prior to cutting the bumper.
7. The high tensile fasteners supplied with this product were used to achieve the specified rating. If replacement is required ensure that fasteners of the same rating & quality are used. Contact an authorized **Trailboss** dealer if further information is required.
8. Ensure that all hardware is fastened to torque list below check fasteners on regular basis.
9. Tow bar load rating sticker provided with this product shall be conspicuously located on inside rear end of the driver's door. **(See diagram below).**
10. Trailboss recommends that you check your tow ball to ensure that it complies with the Australian standards **AS 4177.2**.
11. **PLEASE NOTE:** It is advised to remove your lug or tbn when not actually towing so as to produce a clear view of the vehicles registration plate if obscured, and to also provide maximum available departure angle



Place load rating sticker  
inside driver's door here

**FOR TRAILER TOWING PURPOSES ONLY**  
For towing capacity details please refer to vehicle owner's manual or to the manufacturer. Overloading can void your warranties.

**RECOMMENDED ASSEMBLY TORQUE LISTING**

Diameter    Grade 8.8 Bolt

M6	9.5 Nm
M8	21.7 Nm
M10	43.4 Nm
M12	77.3Nm
M14	146 Nm
M16	189.8 Nm

**Tow bar Maintenance and Care.**

Trailboss recommends that bolt torque's, as listed below, are routinely and regularly inspected and checked for correct tension. Replace any worn or defective parts.

We recommended to remove Tow Ball Mounts (TBM's, tongues or lugs) when not being used for any considerable length of time.

So as to avoid injury, when not towing it is suggested that the tongue, Pull Pin and R-clip are removed then stored in a safe, clean and dry place, away from excessive moisture.

Hitch Pull Pins and spring "R" clips are regularly checked for proper installation. Replace any worn or defective parts.

Towbar Fitting Instructions  
To Suit MAZDA CX9 CLASSIC & LUXURY 12-2007 on  
Part Number **QTMA652L**  
Rating **2000/150 kg**

1. **Remove rear tie down points from the vehicle via.**

- Remove tie down points by removing the 2 M8 bolts each side of the vehicle see fig 1 then discard tie down points.
- Remove 1 x screw from each bumper stay on the underside of the bumper bar see fig 2.

Tie down point passenger side shown repeat process for driver's side.

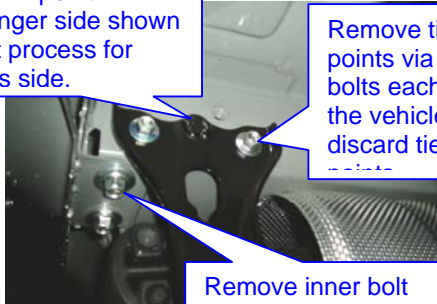


Fig 1

Remove tie down points via 2 M8 bolts each side of the vehicle then discard tie down

Remove inner bolt from each side of the vehicle then discard.

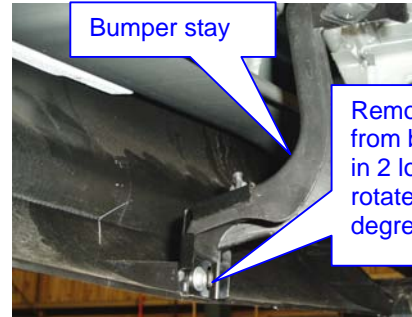


Fig 2

Bumper stay

Remove screw from bumper stay in 2 locations then rotate stays 90 degree

2. **Lower the spare wheel**

- Lower the spare wheel from inside the rear storage compartment using the Mazda supplied wheel brace & socket to gain better access for fitment of the towbar see fig 3.
- Lower the rear mufflers from the rear most rubber hangers to aid fitment of the towbar see figure 4.

From inside the rear luggage compartment remove plastic cover to expose bolt to lower spare wheel. Then lower the spare wheel to have better access to fit towbar.

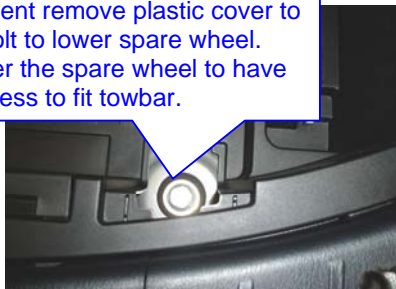


Fig 3

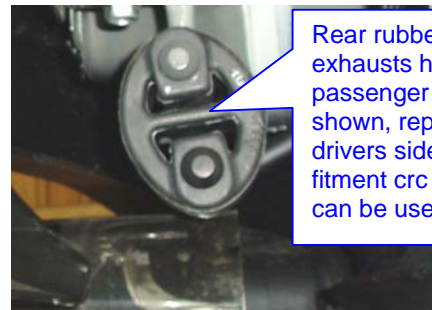


Fig 4

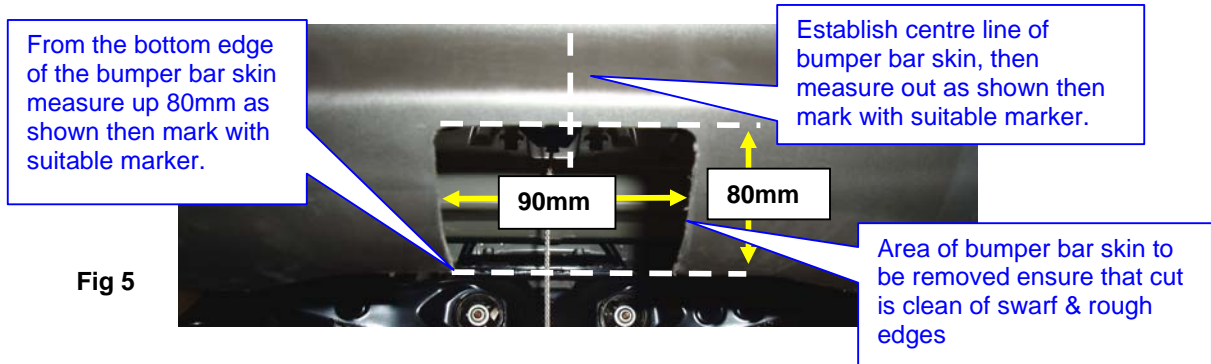
Rear rubber exhausts hanger passenger side shown, repeat for drivers side to aid fitment crc spray can be used.

3. **Bumper bar skin cut**

- Place masking tape on the out side areas of bumper bar skin so not to damage the external surface while cutting.
- Measure out as shown in diagram then cut with small hacksaw or similar device.

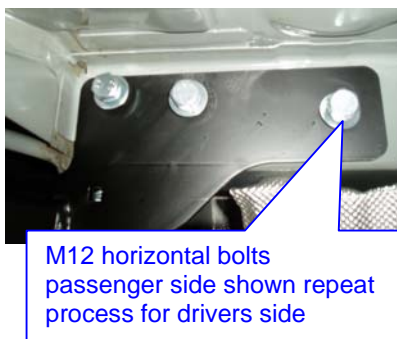
# TRAILBOSS

Towbar Fitting Instructions  
To Suit MAZDA CX9 CLASSIC & LUXURY 12-2007 on  
Part Number **QTMA652L**  
Rating **2000/150** kg

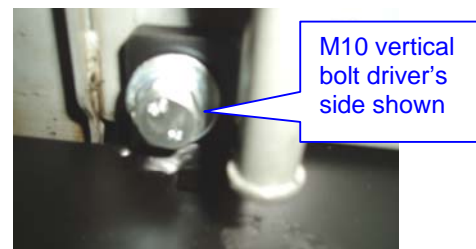


## 1. Fitment of towbar to the vehicle.

- Caution** two person lift is required to fit this product.
- Align holes in side arms with captive nuts on the inside of the chassis rails fit loosely M12 bolts flat & spring washers provided see fig 6.
- Fit M10 bolts to the vertical mount on the underside of the chassis rails see fig 7.
- Fasten all hardware to the torque listing.
- Fit trailer ball mount with pin & spring cotter pin supplied see assembly detail for reference.
- Refit the spare wheel in the reverse of step 12 a.
- Refit the rear most exhaust rubber hangers in the reverse of step 12 b.
- Refit the rear bumper bar stays in the reverse of step 11 b.

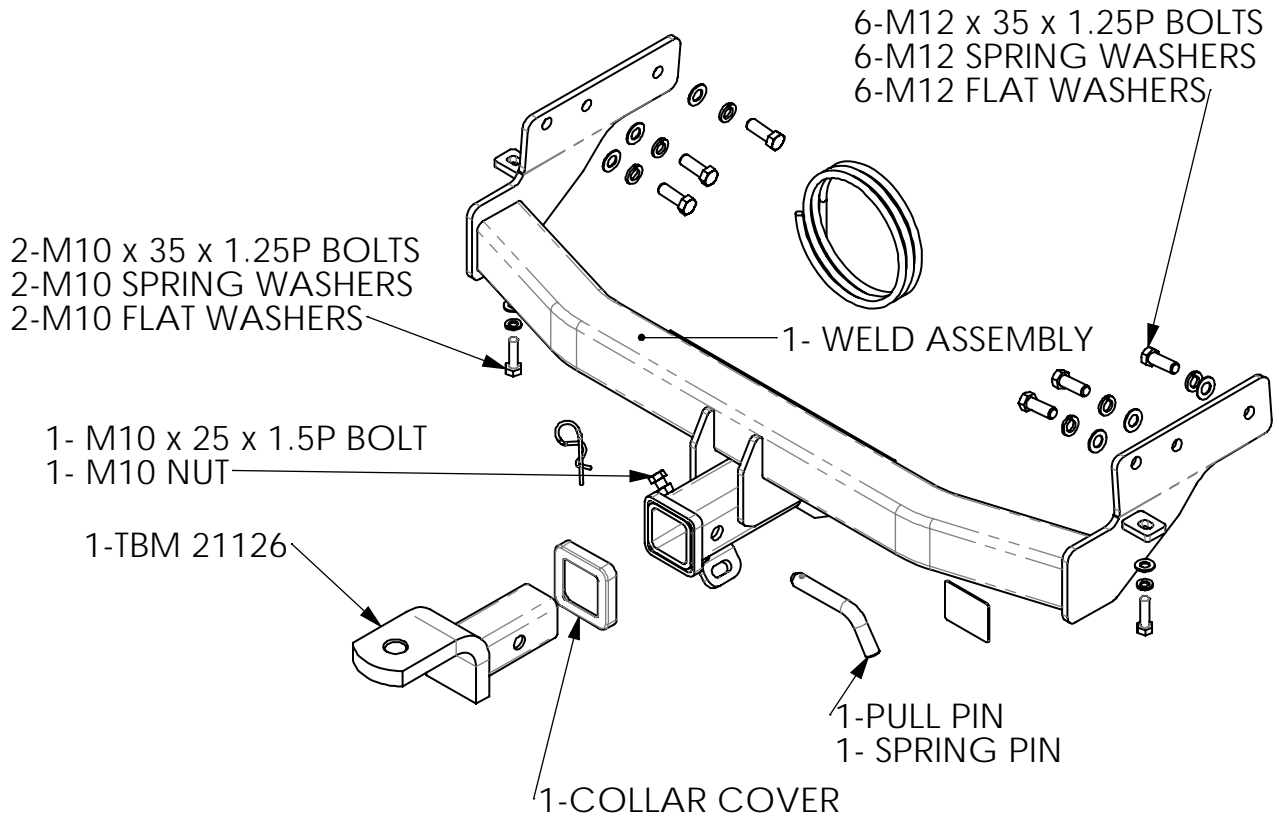


**Fig 7**



# TRAILBOSS

Towbar Fitting Instructions  
To Suit MAZDA CX9 CLASSIC & LUXURY 12-2007 on  
Part Number **QTMA652L**  
Rating **2000/150** kg





Wiring Loom Fitting Instructions  
To Suit Mazda CX-9  
Part Number 100068-WL

Wiring Loom Installation Instructions

Mazda CX-9  
Part No: 100068-WL

Tail Harness Length Require: 1200mm  
RPA Override Switch Part No: 04848 (If Fitted)

Wiring Loom Installation Time: Approx 40 Mins



Wiring Loom Fitting Instructions  
To Suit Mazda CX-9  
Part Number 100068-WL

1. Remove the rear bumper fascia by removing its fasteners.
2. In the luggage compartment, remove the luggage compartment floor carpet.
3. In the rear passenger cabin, remove the passenger seat foot caps and then remove the fasteners from the feet.
4. Behind the rear seats, pull in the seat belt buckles.
5. Fold up the rear passenger seats and then remove the LHS rear passenger sill trim.
6. In the luggage compartment, remove the luggage compartment LHS tool tray by removing its fasteners.
7. Remove the luggage compartment RHS tool tray by removing its fasteners.
8. Remove the rear trim by removing its fasteners. Remove the LHS grommet from the rear tail gate of the vehicle. On the outside of the vehicle, drill out the grommet hole to  $\varnothing 31\text{mm}$ . File down any rough or sharp edges. Spray on rust inhibitor.
9. Remove the LHS luggage compartment tray, the lower seat belt fastener and then remove the LHS luggage compartment trim.
10. On the RHS, remove enough fasteners to dislodge the trim and gain access to the RHS tail light connectors.
11. Disconnect the LHS tail light connector and then patch the trailer patch harness (P/No: 100068-WL) connectors in between.
12. Route the trailer patch harness BLACK wire through the LHS sheet metal cavity (behind the seat belt mechanism), towards the large blue vehicle connector.
13. Route the ring terminal towards the vehicle grounding point above the LHS wheel arch area and secure using the vehicle fastener.
14. Disconnect the large blue connector. Attach the supplied ezy tap to the blue connector RED/YELLOW reverse wire and then connect the trailer patch harness terminal onto the ezy tap.
15. On the outside of the vehicle mount the tail harness trailer socket (tail length 1200mm) to the towbar mounting bracket using M4 fasteners (not supplied).
16. Route the tail harness across the towbar and into the grommet hole.
17. Adjust the tail harness grommet ensuring that the grommet is seated correctly. Secure the grommet onto the harness using a cable tie (not supplied).
18. Route the trailer patch harness across the rear of the vehicle towards the RHS tail light connectors. Connect the trailer patch harness connector to the tail harness connector.



Wiring Loom Fitting Instructions  
To Suit Mazda CX-9  
Part Number 100068-WL

19. On the RHS, disconnect the tail light connectors and patch in the trailer patch harness connectors in between.
20. Test the Trailer socket using a light board or multi-meter.
21. Secure the all harnesses using cables ties (not supplied).
22. Refit all removed parts and secure all fasteners.
23. Place instructions in glove box after fitment.