

TRAILBOSS

Towbar Fitting Instructions
To Suit **MAZDA CX-5 2012** on
Part Number **QTMA657L**
Rating **1800 kg**

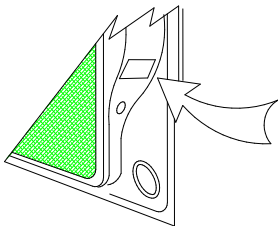
PLACE THESE INSTRUCTIONS IN THE VEHICLE'S GLOVEBOX AFTER INSTALLATION IS COMPLETE

WARNING:

1. Do not, drill, cut, weld or otherwise modify the tow bar.
2. If you are using electric welding on a motor vehicle, **always** check that the vehicle is not equipped with electronic engine or instrument management equipment. Failure to do so could **destroy** any onboard computers. If in doubt, check with the vehicle's manufacturer.
3. The high tensile fasteners supplied with this product were used to achieve the specified rating. If replacement is required ensure that fasteners of the same rating & quality are used. Contact an authorised **Trailboss** dealer if further information is required.

General:

1. Ensure all hardware items have been included refer to assembly diagram.
2. It is recommended that the instructions are read through and completely understood before making any attempt to fit this product.
3. Be wary of any changes to vehicle designs or other accessories that may conflict with the installation of this product.
4. Before drilling ensure that the area is clear of fuel, electrical & other components.
5. All holes drilled into the body panels shall have all burrs & swarf removed then coated with a suitable rust preventative paint.
6. For vehicles that require the bumper to be cut. Ensure cut out area is in correct position on the vehicle prior to cutting the bumper.
7. The high tensile fasteners supplied with this product were used to achieve the specified rating. If replacement is required ensure that fasteners of the same rating & quality are used. Contact an authorized **Trailboss** dealer if further information is required.
8. Ensure that all hardware is fastened to torque list below check fasteners on regular basis.
9. Tow bar load rating sticker provided with this product shall be conspicuously located on inside rear end of the driver's door. **(See diagram below)**.
10. Trailboss recommends that you check your tow ball to ensure that it complies with the Australian standards **AS 4177.2**.
11. **PLEASE NOTE:** It is advised to remove your lug or tbm when not actually towing so as to produce a clear view of the vehicles registration plate if obscured, and to also provide maximum available departure angle
12. Pull Pin must be fit in down position.



Place load rating sticker
inside driver's door here

FOR TRAILER TOWING PURPOSES ONLY
For towing capacity details please refer to vehicle owner's manual or to the manufacturer. Overloading can void your warranties.

RECOMMENDED ASSEMBLY TORQUE LISTING

Diameter	Grade 8.8 Bolt
M6	9.5 Nm
M8	21.7 Nm
M10	43.4 Nm
M12	77.3Nm
M14	146 Nm
M16	189.8 Nm

Tow bar Maintenance and Care.

Trailboss recommends that bolt torque's, as listed below, are routinely and regularly inspected and checked for correct tension. Replace any worn or defective parts.

We recommended to remove Tow Ball Mounts (TBM's, tongues or lugs) when not being used for any considerable length of time.

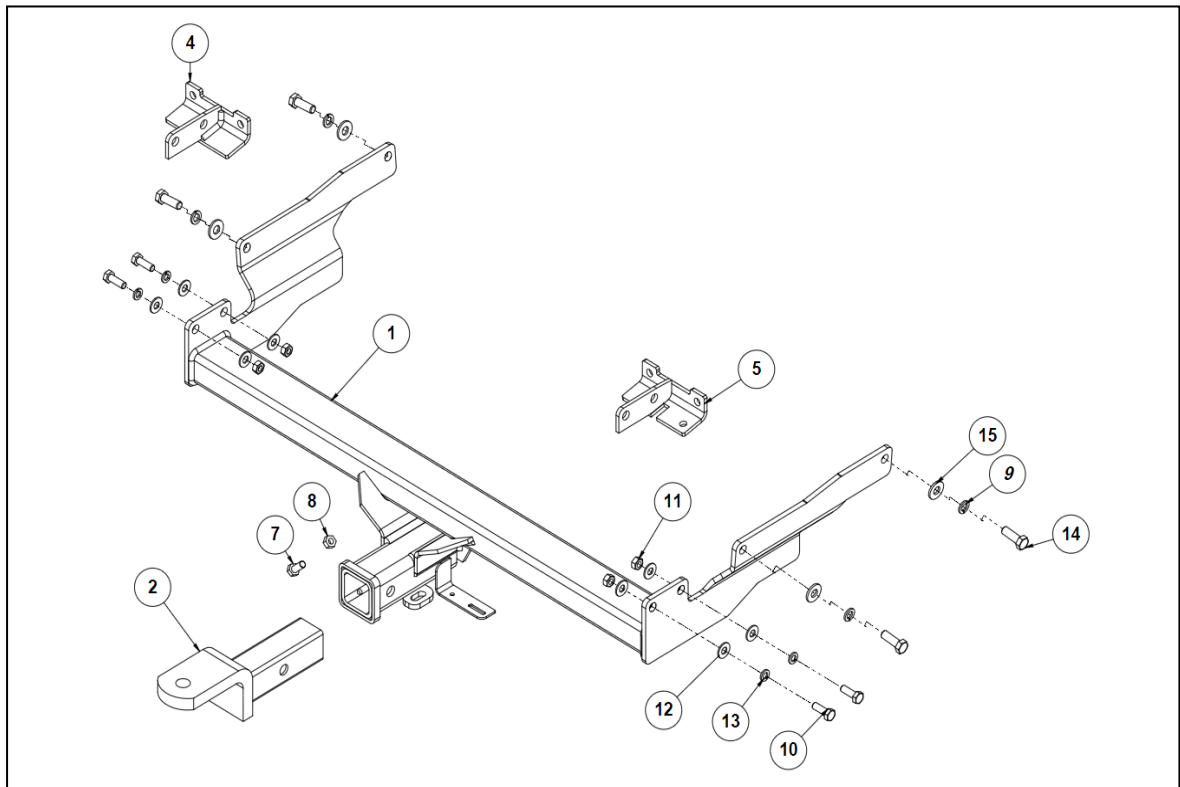
So as to avoid injury, when not towing it is suggested that the tongue, Pull Pin and R-clip are removed then stored in a safe, clean and dry place, away from excessive moisture.

Hitch Pull Pins and spring "R" clips are regularly checked for proper installation. Replace any worn or defective parts.

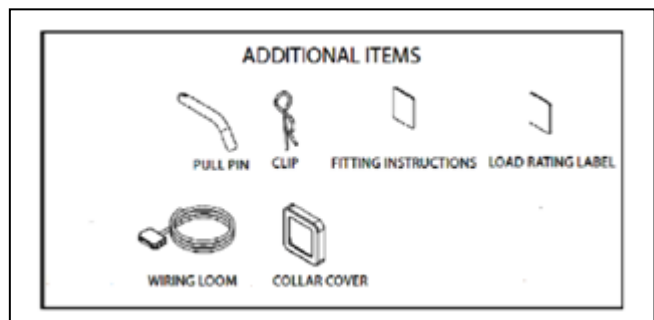
TRAILBOSS

Towbar Fitting Instructions
 To Suit **MAZDA CX-5 2012** on
 Part Number **QTMA657L**
 Rating **1800 kg**

PLACE THESE INSTRUCTIONS IN THE VEHICLE'S GLOVEBOX AFTER INSTALLATION IS COMPLETE



QTY.	DESCRIPTION	ITEM NO.
1	WELDED ASSEMBLY - MAZDA CX-5	1
1	TRAILER BALL MOUNT	2
1	BOLT BAG	3
1	SIDE ARM BRACKET - PASSENGER SIDE	4
1	SIDE ARM BRACKET - DRIVER SIDE	5
1	Plastic Sheet Bag	6
1	BOLT M10-1.50 x 25	7
1	HEX NUT M10x1.5	8
4	Wshr spring ft sec M12x4.0x2.5mm z/p	9
4	BOLT M10x35mmx1.25 GR. 8.8	10
4	NUT HX M10-1.25 Z/P	11
8	Washer Flat M10 x 23 x 2 z/p	12
4	M10 X 3.5 X 2.2 SPRING WSHR	13
4	BOLT M12-1.25x35 GR 8.8	14
4	WASHER M12x28.8x3mm	15





Towbar Fitting Instructions
To Suit MAZDA CX-5 2012 on
Part Number QTMA657L
Rating 1800 kg

PLACE THESE INSTRUCTIONS IN THE VEHICLE'S GLOVEBOX AFTER INSTALLATION IS COMPLETE

1. Remove rear tail lights via

- Remove Trim from each side to expose inner tail light cavities so that access can be gained to remove 3x M6 nuts each side.
- Unplug the tail lights in 2 places each side
- Remove the tail light, push it rearwards some force may be required. Store them in a safe location.

2. Remove Rear Bumper bar skin via

- Remove 2 x M5 screw from the top of bumper inside the tail light cavity, one from each side.
- Remove 2x M5 screw from each side of the boot cavity.
- Remove 2 x plastic trim buttons from underneath the bumper bar.
- Remove 4 x plastic trim buttons and 3 Screws from inside the wheel arch on each side.
- Pull open the flare guard to get access to remove two plastic trim and a M5 screw on each side.
- Remove 3 x M5 screws from under side of the wheel arch on each side.
- Disconnect any wiring (reverse sensor) from the bumper.
- Flex bumper out at the sides then pull rearward to remove, some force may be required. Store the bumper in a safe location.

CAUTION – TWO PERSON LIFT REQUIRED

3. Preparation before Towbar Fitment

- Remove the 2X M10 nuts on the lower end of the impact bean on each side and retain the nuts for towbar fitment.
- Remove the tape on the chassis rail to expose the M12 captive nuts.
- Remove the seam seal wherever needed.

4. Fitment of Towbar Via

- Lower the Rear muffler via 4 x rubber hangers to gain better access.
- Fix the side arm bracket in the on both sides with the retained 2xM10 nuts from the impact beam.
- Align the holes in the side arm of the towbar to the side arm bracket and fasten with 2xM10 bolts & washers provided on both sides as shown in assembly drawing.
- See assembly diagram for correct orientation of components.
- Manoeuvre the towbar to the chassis frame so that the holes in the side arms of the towbar align with the captive nuts and holes in the chassis rail.
- Fasten with 2xM12 bolts & washers provided loosely on both sides as shown in refer to page 2 diagram.
- Fasten all hardware to Torque listing on Page 2.

Refit Bumper

- Ensure to lift the exhaust system into place.
- Mark out the Bumper Cut using a Masking Tape , ensure there isn't any wiring close to the cut out.
- Cut under side of the bumper along the marked out line from inside out trim the edge of the bumper cut.
- Refit the bumper in the reverse order of removal.



Wiring Loom Fitting Instructions
To Suit Mazda CX-5
Part Number 100782-WL

Wiring Loom Installation Instructions

Mazda CX-5
Part No: 100782-WL
ECU: 04826

Tail Harness Length Required: 1200mm
RPA Override Switch Part No: 04848 (If Fitted)

Wiring Loom Installation Time: Approx 30 Mins



Wiring Loom Fitting Instructions
To Suit Mazda CX-5
Part Number 100782-WL

1. In the luggage compartment, remove the parcel shelf.
2. Fold the rear passenger seats down by first unclipping the seat carpet flaps.
3. Remove the floor carpet cover.
4. Remove both the LHS and RHS foam tool trays.
5. Remove the rear luggage compartment trim by first removing the two clips and pulling in an upwards direction.
6. On the LHS of the luggage compartment, remove the clip and the screw.
7. Remove the two cargo hooks by first removing the two 10mm bolts securing it in place.

The following step is for Mazda CX-5 High Spec model. For Mazda CX-5 Low Spec, proceed to step 10.

8. Underneath the rear seat release handle, remove the plastic cover and remove the screw underneath.
9. Dislodge the rear seat release handle.

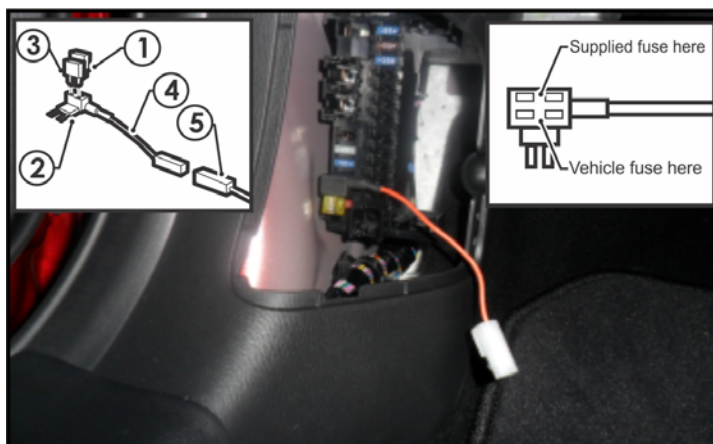
Repeat for the RHS.

10. Carefully dislodge the LHS luggage compartment trim, whilst disconnecting the light connector.
11. Remove the LHS luggage compartment trim.
12. On the RHS luggage compartment trim, remove the clip and only front cargo hook.
13. Carefully whilst dislodging, disconnect the 12v accessory connector.
14. Dislodge the RHS luggage compartment trim enough to expose the tail light and feed trailer harness through.
15. On the LHS of the rear passengers side, remove the door sill trim and dislodge the 'B' pillar trim.
16. On the LHS of the front passenger's side, remove the door sill trim and the kick panel fuse access cover.
17. Inside the luggage compartment, on the LHS rear quarter panel, drill out the grommet hole to Ø30mm using a step drill.
18. File down any rough edges and spray with rust inhibitor.

TRAILBOSS

Wiring Loom Fitting Instructions To Suit Mazda CX-5 Part Number 100782-WL

19. On the LHS of the luggage compartment, disconnect the LHS tail light connectors and connect the trailer harness (100782-WL) connectors in between.
20. Connect the Trailer Harness ground ring terminal to the vehicle's grounding point.
21. Connect the 12-way trailer harness connector to the ECU.
22. Apply double side tape to the ECU and adhere it to the vehicle sheet metal on the LHS of the luggage compartment.
23. Following the existing vehicle harness, route the trailer harness towards the RHS tail light connector.
24. On the RHS of the luggage compartment, feed the trailer harness through the previously dislodged luggage compartment trim.
25. Disconnect the 3-Way tail light connector and connect the trailer harness connectors in between.
26. Route the 'ORANGE' power wire past the LHS luggage compartment towards the front of the vehicle.
27. Continue routing the 'ORANGE' power wire through the LHS rear passenger's door sill trim and through the 'B' pillar trim.
28. Continue routing the 'ORANGE' power wire through the LHS front passengers door sill trim and through the kick panel trim towards the fuse panel.
29. On the fuse panel, locate and remove the 25A fuse and discard.



30. Insert the supplied 20A fuse into the upper slot of the add-a-fuse.
31. Insert the supplied 25A fuse into the lower slot of the add-a-fuse.



Wiring Loom Fitting Instructions
To Suit Mazda CX-5
Part Number 100782-WL

32. Plug the add-a-fuse into the now vacant fuse slot.
33. Connect the 'ORANGE' power wire 1-way connector into the add-a-fuse harness mating connector.
34. Mount the trailer socket to the towbar mounting bracket using M4 fasteners (not supplied).
35. Route the tail harness (tail length 1200mm) towards and up through the previously drilled out hole.
36. Ensure the tail harness grommet is seated correctly and makes a good seal.
37. Secure the grommet in place using cable ties (not supplied).
38. Connect the tail harness 8-way connector to the Trailer Patch 8-way mating connector.
39. Test the Trailer Harness function using a light board or multimeter.
40. Secure all harnesses using cable ties (not supplied).
41. Re-fit removed parts and secure all fasteners, ensuring there are no squeaks or rattles.
42. Place the instructions in the glove box after fitment.