



Towbar Fitting Instructions
To Suit MERCEDES-BENZ M-CLASS
Part Number QTMB180B
Rating 2650Kg

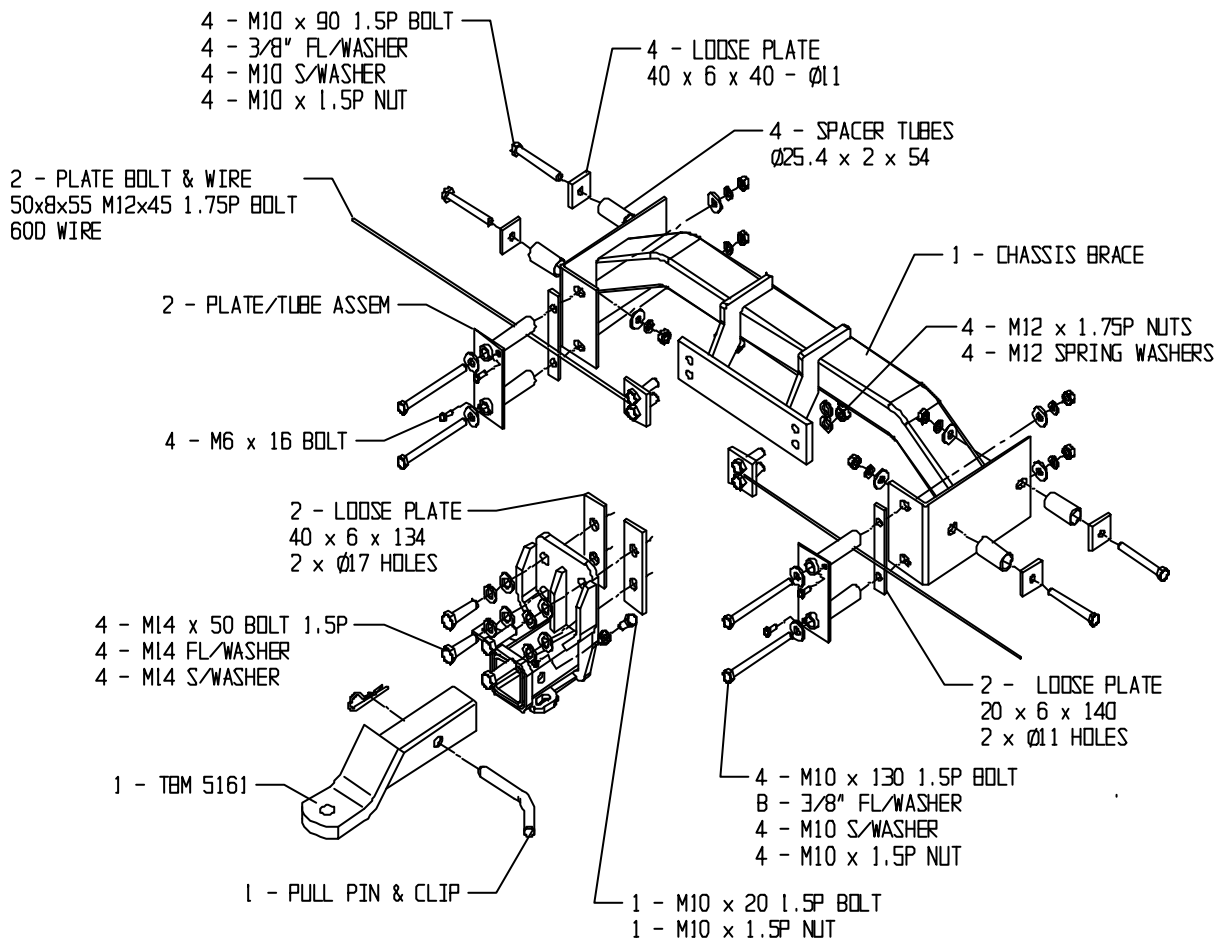
1. Remove pop out cover from centre of rear bumper bar.
2. Ensure all hardware items have been included.
3. **Vehicles without outboard spare wheel carrier remove spare wheel:**
Remove spare wheel.
Vehicles with outboard spare wheel carrier:
Fold up outboard spare wheel carrier.
4. Remove right lock bracket of outboard spare wheel carrier.
5. Remove rear bumper bar.
6. Fit four M10x90 bolts with fitting plates and spacer tubes (items 1, 2 & 3) through chassis rails as shown in figure 1.
7. Fit plate / tube assembly into holes in rear cross rail (item 9).
Insert four M10x130 bolts with flat washers (items 7 & 4) and four M6x16 (item 8) bolts as shown in figure 3.
8. Position chassis brace (item 11) to align with bolts fitted in step 6 and attach washers and nuts hand tight as shown in figure 2. (items 4, 5 & 6)
9. Fit fitting plates (item 10) between rear cross-member and chassis brace (item 11)
10. Fit nuts and washers to bolts (items 4, 5 & 6) fitted in step 8.
11. Position towbar assembly onto rear cross rail, with fitting plates (item 18) in between and fit four M14x50 bolts with washers (items 15, 16 & 17) as shown in figure 3.
12. Using four holes in chassis support brace, drill through rear cross member and fit fitting plate bolt on wire(item 20) Fit m12 spring washers and nuts (items 21 & 22).
13. Tighten all bolts to torque listing below.
14. Refit rear bumper bar and spare wheel or outboard spare wheel carrier.
15. Attach the plastic hitch box collar (item 19) by applying firm even pressure.
16. Insert the tongue (item 14) into the hitchbox and secure with "R" clip and pull pin (items 12 & 13)

RECOMMENDED ASSEMBLY TORQUE LISTING

<u>Diameter</u>	<u>Grade 8.8 Bolt</u>
Nm	
M6	9.5
M8	21.7
M10	43.4
M12	77.3
M14	121.0
M16	189.8

TRAILBOSS

Towbar Fitting Instructions To Suit MERCEDES-BENZ M-CLASS Part Number QTMB180B Rating 2650Kg



****NOTE**** Use one (1) M14 nut for assembly only

Towbar Fitting Instructions
To Suit MERCEDES-BENZ M-CLASS
Part Number QTMB180B
Rating 2650Kg

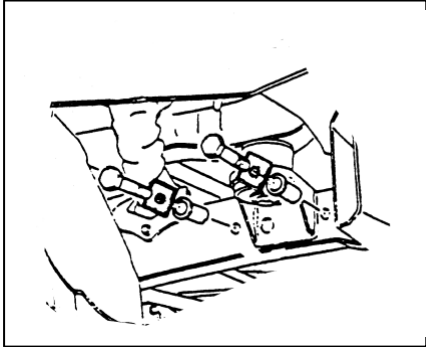


FIG 1

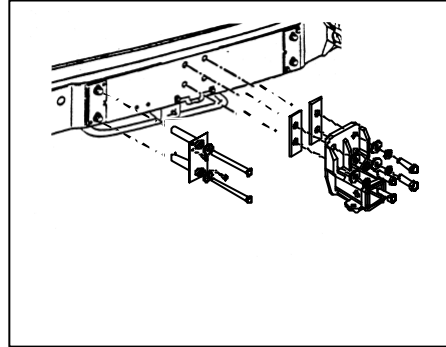


FIG 3

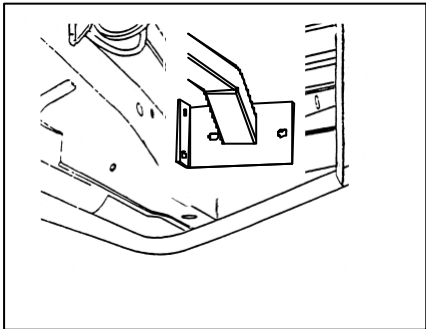


FIG 2

