

TRAILBOSS

Towbar Fitting Instructions
To Suit PEUGEOT 4007 WAGON 01/2012 - ON
Part Number QTPG1L
Rating 2000/160 kg

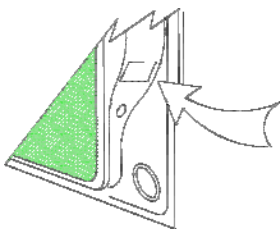
PLACE THESE INSTRUCTIONS IN THE VEHICLE'S GLOVEBOX AFTER INSTALLATION IS COMPLETE

WARNING:

1. Do not, drill, cut, weld or otherwise modify the tow bar.
2. If you are using electric welding on a motor vehicle, **always** check that the vehicle is not equipped with electronic engine or instrument management equipment. Failure to do so could **destroy** any onboard computers. If in doubt, check with the vehicle's manufacturer.
3. The high tensile fasteners supplied with this product were used to achieve the specified rating. If replacement is required ensure that fasteners of the same rating & quality are used. Contact an authorised **Trailboss** dealer if further information is required.

General:

1. Ensure all hardware items have been included refer to assembly diagram.
2. It is recommended that the instructions are read through and completely understood before making any attempt to fit this product.
3. Be wary of any changes to vehicle designs or other accessories that may conflict with the installation of this product.
4. Before drilling ensure that the area is clear of fuel, electrical & other components.
5. All holes drilled into the body panels shall have all burrs & swarf removed then coated with a suitable rust preventative paint.
6. For vehicles that require the bumper to be cut. Ensure cut out area is in correct position on the vehicle prior to cutting the bumper.
7. The high tensile fasteners supplied with this product were used to achieve the specified rating. If replacement is required ensure that fasteners of the same rating & quality are used. Contact an authorized **Trailboss** dealer if further information is required.
8. Ensure that all hardware is fastened to torque list below check fasteners on regular basis.
9. Tow bar load rating sticker provided with this product shall be conspicuously located on inside rear end of the driver's door. **(See diagram below)**.
10. Trailboss recommends that you check your tow ball to ensure that it complies with the Australian standards **AS 4177.2**.
11. **PLEASE NOTE:** It is advised to remove your lug or tbn when not actually towing so as to produce a clear view of the vehicles registration plate if obscured, and to also provide maximum available departure angle
12. Pull Pin must be fit in down position.



Place load rating sticker
inside driver's door here

FOR TRAILER TOWING PURPOSES ONLY
For towing capacity details please refer to vehicle owner's manual or to the manufacturer. Overloading can void your warranties.

RECOMMENDED ASSEMBLY TORQUE LISTING

Diameter	Grade 8.8 Bolt
M6	9.5 Nm
M8	21.7 Nm
M10	43.4 Nm
M12	77.3Nm
M14	146 Nm
M16	189.8 Nm

Tow bar Maintenance and Care.

Trailboss recommends that bolt torque's, as listed below, are routinely and regularly inspected and checked for correct tension. Replace any worn or defective parts.

We recommended to remove Tow Ball Mounts (TBM's, tongues or lugs) when not being used for any considerable length of time.

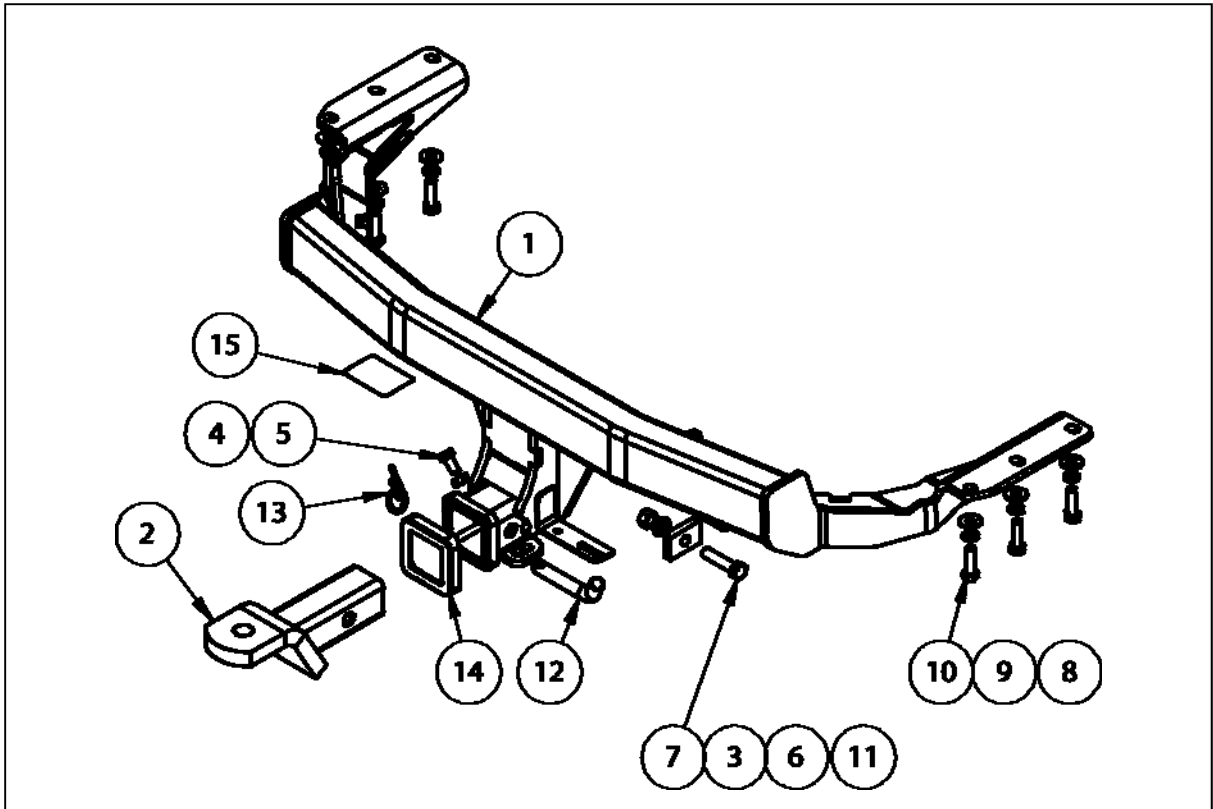
So as to avoid injury, when not towing it is suggested that the tongue, Pull Pin and R-clip are removed then stored in a safe, clean and dry place, away from excessive moisture.

Hitch Pull Pins and spring "R" clips are regularly checked for proper installation. Replace any worn or defective parts.

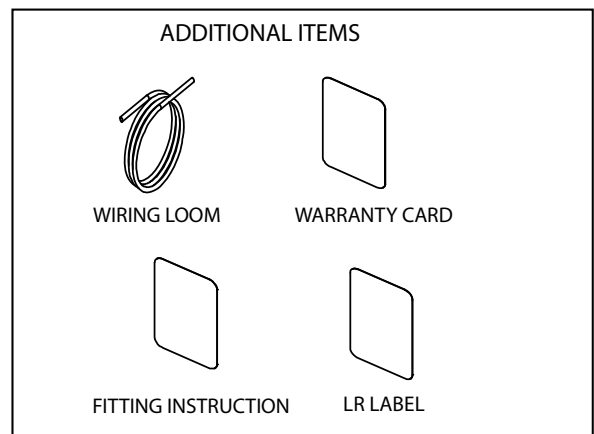
TRAILBOSS

Towbar Fitting Instructions
 To Suit PEUGEOT 4007 WAGON 01/2012 - ON
 Part Number QTPG1L
 Rating 2000/160 kg

PLACE THESE INSTRUCTIONS IN THE VEHICLE'S GLOVEBOX AFTER INSTALLATION IS COMPLETE



QTY	DESCRIPTION	ITEM NO
1	WELDED ASSEMBLY	1
1	TBM	2
1	LOOSE PLATE 50x32x10	3
1	NUT M10x1.5P	4
1	M10x20 BOLT	5
1	SPRING WASHER 12x4x2.5	6
1	M12 x50 1.75P BOLT	7
6	WASHER FT 3/8 x1x 16 brt z/p	8
6	M10 SPRING WASHER	9
6	M10 x35 1.25P BOLT	10
1	M12x1.75P NUT	11
1	PULL PIN	12
1	R CLIP	13
1	HITCH BOX COLLAR COVER	14
1	ACRYLIC COMPLIANCE PLATE	15





Towbar Fitting Instructions
To Suit PEUGEOT 4007 WAGON 01/2012 - ON
Part Number QTPG1L
Rating 2000/160 kg

PLACE THESE INSTRUCTIONS IN THE VEHICLE'S GLOVEBOX AFTER INSTALLATION IS COMPLETE

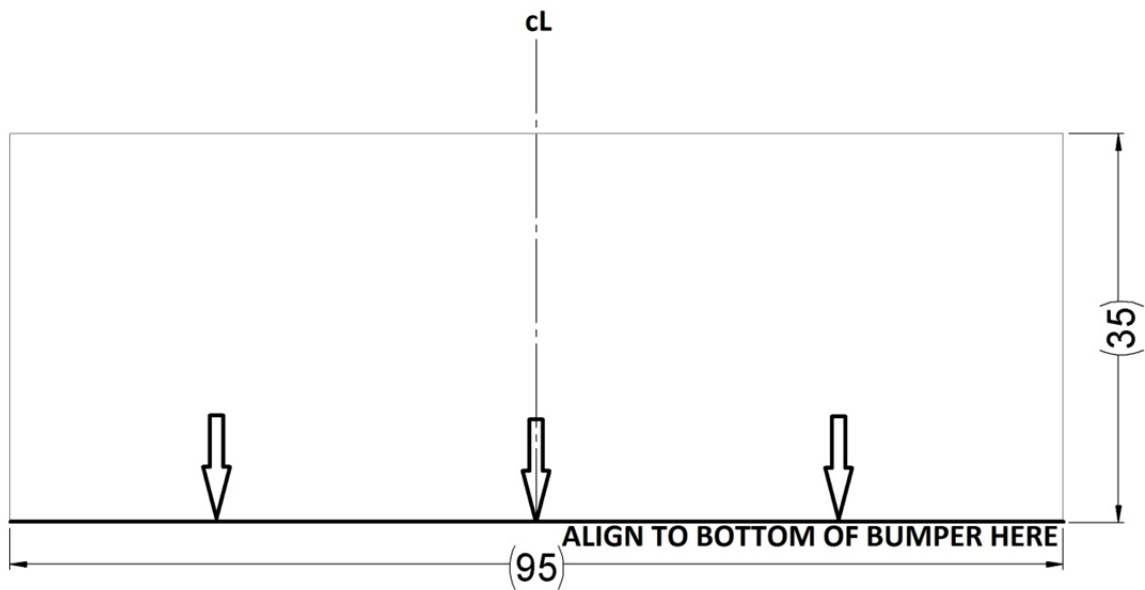
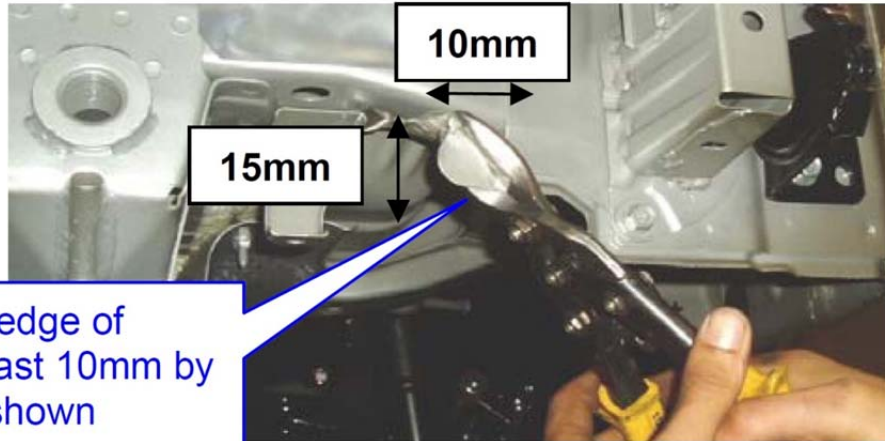
INSTRUCTION:

1. Remove 2x Scrivets and 1x Screw from inside of the LHS Rear Wheel Arch. Repeat for RHS
2. Remove 1x Scrivet from underneath of Bumper near the LHS Rear Wheel. Repeat for RHS
3. Remove 3x Scrivets from underneath of Bumper.
4. Remove 2x Screws from the RHS Taillight assembly. Repeat for LHS.
5. Disconnect Tail light plug behind Chassis Grommet on both sides. Place Tail lights in a safe place.
6. Remove Scrivet from inside of Tail light Cavity on LHS. Repeat for RHS.
7. Remove 4x Scrivets from underneath Rear Tail Gate on LHS. Remove Plastic Cover. Repeat for RHS.
8. Remove 2x Scrivets from the center of the Bumper under the Rear Tail gate.
9. Under the Plastic Cover, remove 1x Screw and 1x Scrivet on LHS side of Bumper. Repeat for RHS.
10. Remove Exhaust from 2x Rubber Hangers as shown. Remove 3x Bolts from Exhaust Flange and place Muffler in a safe place.
11. Remove Bumper and place in a safe place.
12. Cut out a 10 x 15 mm section on the driver's side of the back panel for Towbar clearance.
13. Offer Towbar to Chassis Rails and align holes in Side Plates with Captive Nuts on the underside of Chassis Rails. Fit Bolts, Flat and Spring Washers supplied loosely as per layout diagram. Tighten to torque specification on page1.
14. Make a Bumper Cut to the dimensions below.
15. Re-fit Bumper and Exhaust using steps 1-10 in reverse order.

TRAILBOSS

Towbar Fitting Instructions
To Suit PEUGEOT 4007 WAGON 01/2012 - ON
Part Number QTPG1L
Rating 2000/160 kg

PLACE THESE INSTRUCTIONS IN THE VEHICLE'S GLOVEBOX AFTER INSTALLATION IS COMPLETE





Wiring Loom Fitting Instructions
To Suit Mitsubishi ZG/ZH Outlander
(Nov '06 Onwards) / Peugeot 4007 (MY13)
Part Number 100226-WL

Wiring Loom Installation Instructions

Mitsubishi ZG/ZH Outlander (Nov '06 Onwards)
/ Peugeot 4007 (MY13)

Part No: 100226-WL

ECU Required: 04826
Tail Harness Length Required: 1200mm

Mitsubishi ZG/ZH Outlander – Page 2
Peugeot 4007 – Page 4

Wiring Loom Installation Time: Approx 45 Mins



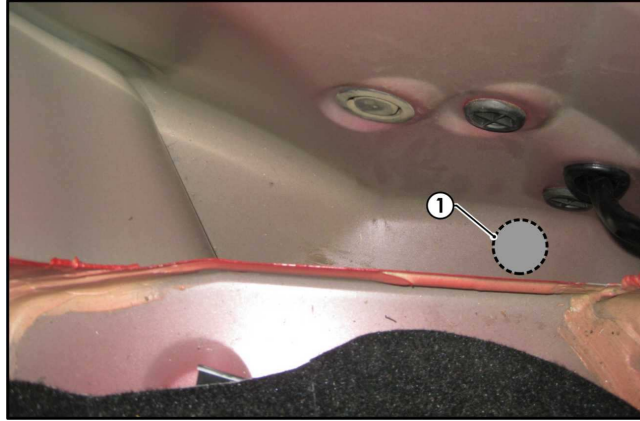
Wiring Loom Fitting Instructions
To Suit Mitsubishi ZG/ZH Outlander
(Nov '06 Onwards) / Peugeot 4007 (MY13)
Part Number 100226-WL

The following steps are for Mitsubishi ZG/ZH Outlander models only. For Peugeot 4007 models, proceed to page 4.

1. In the front LHS corner of the engine bay, locate the 4-way connector, which is located underneath the front LHS headlight assembly.
2. Remove the blanking cap from the connector.
3. Connect the vehicle 4-way connector to the power harness 4-way mating connector.
4. Connect the power harness ring terminal to the positive terminal on the vehicle battery.
5. In the luggage compartment, remove the floor cover.
6. Remove the RHS access panel cover and the vehicle jack.
7. Lift the front half of the tailgate trim.
8. Remove the tail gate trim by first removing the three fasteners.
9. Fold the RHS rear seat forward.
10. Remove the RHS rear scuff plate by first removing the two clips.
11. Dislodge the RHS side trim and disconnect the two connectors.
12. Remove the RHS side trim.
13. Locate the vehicle breakout connector.
14. Connect the breakout connector to the trailer patch mating connector .
15. Route the trailer harness above the jack tool cavity.
16. Clean the area where the ECU (04826) will be mounted in the jack tool cavity.
17. Connect the trailer harness 12-way connector to the ECU.
18. In the bottom of the jack tool cavity, drill a Ø30mm hole (1) in the vehicle sheet metal.

TRAILBOSS

Wiring Loom Fitting Instructions
To Suit Mitsubishi ZG/ZH Outlander
(Nov '06 Onwards) / Peugeot 4007 (MY13)
Part Number 100226-WL



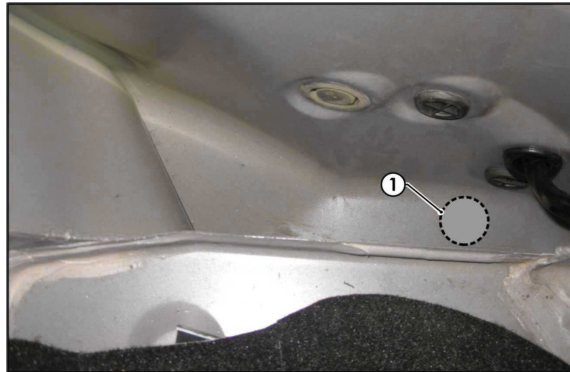
19. File any rough or sharp edges and spray on rust inhibitor.
20. From the outside of the vehicle, mount the trailer socket to the towbar mounting bracket using M4 fasteners (not supplied).
21. Route the Tail Harness across the towbar towards the RHS of the vehicle and up through the previously drilled out hole.
22. Ensure the Tail Harness grommet is seated correctly and secure in place using a cable tie (not supplied).
23. Connect the Tail Harness 8-way connector to the Trailer Harness mating 8-way connector.
24. Test the Trailer Harness function using a light board or multi-meter.
25. Secure all Harnesses using cables ties (not supplied).
26. Re-fit all removed parts and secure all fasteners, ensuring there are no squeaks or rattles.
27. Place the instructions in the glove box after fitment.

TRAILBOSS

Wiring Loom Fitting Instructions To Suit Mitsubishi ZG/ZH Outlander (Nov '06 Onwards) / Peugeot 4007 (MY13) Part Number 100226-WL

The following steps are for Peugeot 4007 models only. For Mitsubishi ZG/ZH Outlander models, refer to page 2.

1. In the luggage compartment, remove the floor cover and the parcel shelf.
2. Remove the RHS access panel cover and the vehicle jack.
3. Lift the front half of the tail gate trim.
4. Remove the three fasteners and then detach the tail gate trim.
5. Fold the RHS rear seat forward.
6. Remove the two clips and then detach the RHS rear scuff plate.
7. On the RHS of the luggage compartment trim, remove the five screws.
8. At the base of the RHS luggage compartment trim, remove the three screws.
9. Remove the RHS luggage compartment trim and disconnect the 12v accessory 2-way connector.
10. In the bottom of the jack tool cavity, drill a Ø30mm hole as shown.
11. File any rough or sharp edges and spray on rust inhibitor.



12. Locate the vehicle breakout connector.
13. Connect the breakout connector to the trailer patch mating connector.
14. Route the trailer harness above the jack tool cavity.
15. Clean the flat surface area to the right of the seat belt anchor, where the ECU (04826) will be mounted.
16. Connect the trailer harness 12-way connector to the ECU.
17. Mount the ECU to the previously cleaned sheet metal surface.



Wiring Loom Fitting Instructions
To Suit Mitsubishi ZG/ZH Outlander
(Nov '06 Onwards) / Peugeot 4007 (MY13)
Part Number 100226-WL

18. Inside the engine bay, remove the two air intake clips, and the air intake.
19. Remove the two nuts and remove the battery bracket.
20. Disconnect the positive and negative terminals.
21. Remove the battery.
22. Locate and connect the power harness 4-way male connector to the female 4-way vehicle breakout connector.
23. Re-install the vehicle battery & air intake.
24. Route the Power Harness ring terminal around the battery towards the positive terminal.
25. From the outside of the vehicle, mount the trailer socket to the towbar mounting bracket using M4 fasteners (not supplied).
26. Route the Tail Harness across the towbar towards the RHS of the vehicle and up through the previously drilled hole.
27. Ensure the Tail Harness grommet is seated correctly and secure in place using a cable tie (not supplied).
28. Connect the Tail Harness 8-way connector to the Trailer Harness mating 8-way connector.
29. Connect the Power Harness ring terminal to the positive battery terminal.
30. Test the Trailer Harness function using a light board or multimeter.
31. Secure all Harnesses using cables ties (not supplied).
32. Re-fit all removed parts and secure all fasteners, ensuring there are no squeaks or rattles.
33. Place the instructions in the glove box after fitment.