

TRAILBOSS

Towbar Fitting Instructions
To Suit **PEUGEOT 308 WAGON 01/2008 - ON**
Part Number **QTPG3L**
Rating **1650/70 kg**

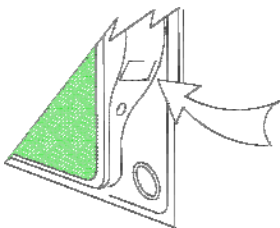
PLACE THESE INSTRUCTIONS IN THE VEHICLE'S GLOVEBOX AFTER INSTALLATION IS COMPLETED

WARNING:

1. Do not, drill, cut, weld or otherwise modify the tow bar.
2. If you are using electric welding on a motor vehicle, **always** check that the vehicle is not equipped with electronic engine or instrument management equipment. Failure to do so could **destroy** any onboard computers. If in doubt, check with the vehicle's manufacturer.
3. The high tensile fasteners supplied with this product were used to achieve the specified rating. If replacement is required ensure that fasteners of the same rating & quality are used. Contact an authorised **Trailboss** dealer if further information is required.
4. If TBM is used in inverted position tow ball may make contact with rear tailgate when lowered, which could cause damage.

General:

1. Ensure all hardware items have been included refer to assembly diagram.
2. It is recommended that the instructions are read through and completely understood before making any attempt to fit this product.
3. Be wary of any changes to vehicle designs or other accessories that may conflict with the installation of this product.
4. Before drilling ensure that the area is clear of fuel, electrical & other components.
5. All holes drilled into the body panels shall have all burrs & swarf removed then coated with a suitable rust preventative paint.
6. For vehicles that require the bumper to be cut. Ensure cut out area is in correct position on the vehicle prior to cutting the bumper.
7. The high tensile fasteners supplied with this product were used to achieve the specified rating. If replacement is required ensure that fasteners of the same rating & quality are used. Contact an authorized **Trailboss** dealer if further information is required.
8. Ensure that all hardware is fastened to torque list below check fasteners on regular basis.
9. Tow bar load rating sticker provided with this product shall be conspicuously located on inside rear end of the driver's door. **(See diagram below).**
10. Trailboss recommends that you check your tow ball to ensure that it complies with the Australian standards **AS 4177.2**.
11. **PLEASE NOTE:** It is advised to remove your lug or tbn when not actually towing so as to produce a clear view of the vehicles registration plate if obscured, and to also provide maximum available departure angle
12. Pull Pin must be fit in down position.



Place load rating sticker
inside driver's door here

FOR TRAILER TOWING PURPOSES ONLY
For towing capacity details please refer to vehicle owner's manual or to the manufacturer. Overloading can void your warranties.

RECOMMENDED ASSEMBLY TORQUE LISTING

Diameter	Grade 8.8 Bolt
M6	9.5 Nm
M8	21.7 Nm
M10	43.4 Nm
M12	77.3Nm
M14	146 Nm
M16	189.8 Nm

Tow bar Maintenance and Care.

Trailboss recommends that bolt torque's, as listed below, are routinely and regularly inspected and checked for correct tension. Replace any worn or defective parts.

We recommended to remove Tow Ball Mounts (TBM's, tongues or lugs) when not being used for any considerable length of time.

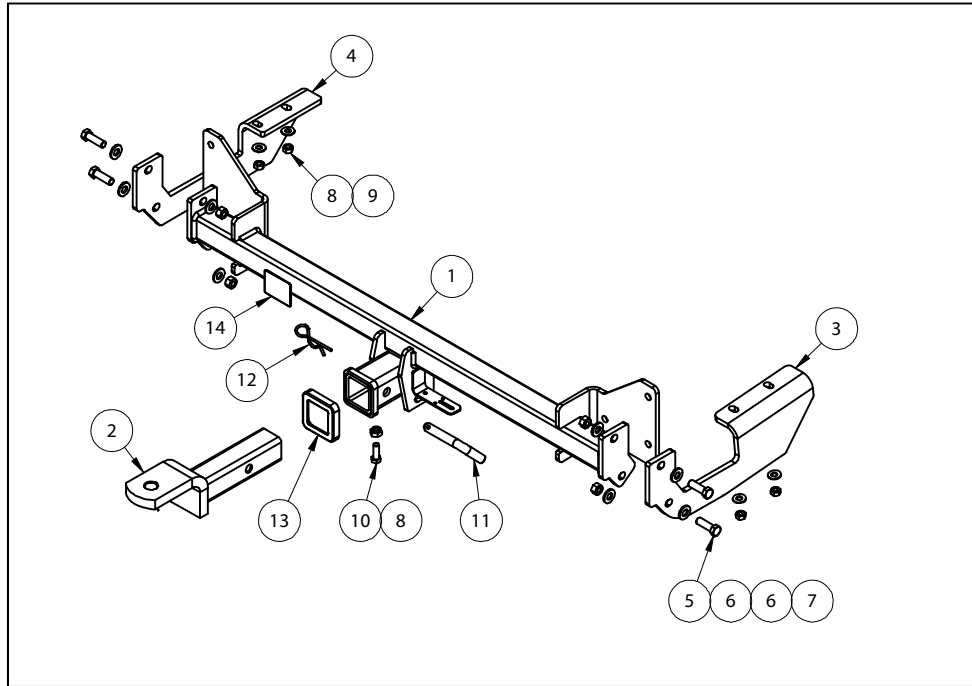
So as to avoid injury, when not towing it is suggested that the tongue, Pull Pin and R-clip are removed then stored in a safe, clean and dry place, away from excessive moisture.

Hitch Pull Pins and spring "R" clips are regularly checked for proper installation. Replace any worn or defective parts.

TRAILBOSS


Towbar Fitting Instructions
 To Suit PEUGEOT 308 WAGON 01/2008 - ON
 Part Number QTPG3L
 Rating 1650/70 kg

PLACE THESE INSTRUCTIONS IN THE VEHICLE'S GLOVEBOX AFTER INSTALLATION IS COMPLETED

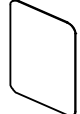


QTY	DESCRIPTION	ITEM NO
1	TOWBAR ASSEMBLY	1
1	TRAILER BALL MOUNT	2
1	SIDE ARM DRIVER	3
1	SIDE ARM PASSENGER	4
4	SET SCREW M12x40x1.75P	5
8	WASHER FLAT 1/2"	6
4	M12x1.75P HEX NUT	7
5	M10x1.5P HEX NUT	8
4	WASHER FLAT M10	9
1	SET SCREW M10x30x1.5P	10
1	PULL PIN	11
1	R CLIP	12
1	HITCH BOX COLLAR COVER	13
1	ACRYLIC COMPLIANCE PLATE	14


ADDITIONAL ITEMS



WIRING LOOM



FITTING INSTRUCTION



LR LABEL



Towbar Fitting Instructions
To Suit PEUGEOT 308 WAGON 01/2008 - ON
Part Number QTPG3L
Rating 1650/70 kg

PLACE THESE INSTRUCTIONS IN THE VEHICLE'S GLOVEBOX AFTER INSTALLATION IS COMPLETED

INSTRUCTION:

1. Rearwards of Rear Driver side tire, remove 3x Scrivets from underneath Bumper Skin
Repeat for passenger-side.
2. Rearwards of Spare Wheel underneath the vehicle, remove 2x Screws securing Bumper Skin to vehicle chassis.
3. From inside the Driver-side wheel-well, peel away Mud Guard and remove 1x Screw located at top of Bumper skin.
Repeat for passenger-side.
4. Remove 2x Screws from Passenger-side tail light. Then remove tail light by pulling rearwards, disconnect wires.
Place tail light in safe place
Repeat for Driver-side.
5. From Passenger-side tail light well, remove 1x Screw. Repeat for Drivers-side.
Carefully unclip and place Bumper skin to the side in a safe place.
6. From Driver-side remove 4x Screws from Impact Barrier. Repeat for Passenger-side.
Remove Impact Barrier from vehicle and dispose, retain 6x Screws.
7. Mount Towbar to vehicle by aligning slots to 6x mount points used by Impact Beam. Use retained screws to secure face plate to vehicle.
Tighten bolts to recommended torques listed on page 1.
8. Mount side plates to side of vehicle, aligning the slot holes to the vehicle's in-built bolts. Ensure flange is pointing inwards towards center of vehicle. Lightly fasten with 2x M10 Nuts and 2x M10 Washers.
Repeat for opposite side of vehicle
9. Using 2x M12 Bolts, 2x M12 Nuts and 4x M12 Washers, lightly secure sidearm plates to the main assembly of Towbar.
Repeat for opposite side of vehicle. Secure all bolts to recommended torques listed on page 2.
10. From the centre of the Bumper, make a cut to allow for the hitchbox to fit
Use a small pilot drill to pierce the skin to allow a small saw or similar device to cut.
Clean any raw edges with a file
Refit the Bumper following steps 1 to 5 in reverse



Wiring Loom Fitting Instructions
To Suit Peugeot 308 Hatch
Part Number 100939-WL

Wiring Loom Installation Instructions

Peugeot 308 Hatch
Part No: 100939-WL
ECU Required: 04829

Tail Harness Length Required: 1800mm

Wiring Loom Installation Time: Approx 45 Mins

Wiring Loom Fitting Instructions To Suit Peugeot 308 Hatch Part Number 100939-WL

1. In the luggage compartment, remove the four screws, securing the rear luggage compartment trim.
2. Remove the rear luggage compartment trim.
3. On the LHS of the tail light, remove the two screws.
4. Remove the tail light assembly.

Repeat steps 3 & 4 for the RHS.

5. On the LHS of the luggage compartment trim, remove the two screws.
6. Remove the access panel cover.
7. Dislodge the LHS luggage compartment trim and disconnect the light connector.

Repeat steps 5 – 7 for the RHS.

8. In the glove compartment, remove the fuse cover trim.
9. In the LHS rear quarter panel of the luggage compartment, drill a Ø30mm hole (1).



10. File any rough or sharp edges and spray with rust inhibitor.
11. On the LHS of the luggage compartment, following the table below, connect the ezy-taps to the corresponding wires, then connect the ezy-taps to the terminals.

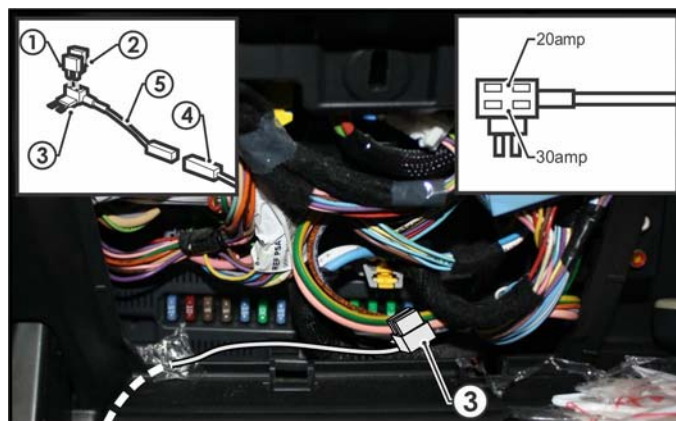
Function	Trailer Patch	Vehicle Connector
L.IND	YELLOW / BLACK	YELLOW
REVERSE	BLACK / WHITE	ORANGE
TAIL	BROWN / BLACK	PURPLE
BRAKES	RED / BLACK	LIGHT BLUE

Wiring Loom Fitting Instructions To Suit Peugeot 308 Hatch Part Number 100939-WL

12. Connect the trailer patch ground ring terminal to the existing vehicle grounding point.
13. Connect the trailer patch 12-way connector to the ECU.
14. Apply double sided tape to the ECU and secure it to the vehicle sheet metal on the LHS of the rear quarter panel.
15. Route the trailer patch towards the RHS of the vehicle.
16. On the RHS of the luggage compartment, following the table below, connect the ezy-tap to the corresponding wires, then connect the ezy-tap to the terminal.

Function	Trailer Patch	Vehicle Connector
R.IND	GREEN / BLACK	LIGHT BLUE

17. Dislodge the LHS door trims and route the 'ORANGE' power wire along the LHS of the vehicle towards the fuse box.
18. Inside the fuse box, locate and remove the 30amp fuse (1).
19. Insert the supplied 20amp fuse (2) into the upper slot of the add-a-fuse harness (3).
20. Insert the previously removed 30amp fuse (1) into the lower slot of the add-a-fuse harness (3).
21. Plug the add-a-fuse (3) into the now vacant slot.
22. Connect the 'ORANGE' power wire 1-way connector (4) into the add-a-fuse harness (5) mating connector.



23. Mount the tail harness socket to the towbar mounting bracket using M4 fasteners (not supplied).
24. Route the tail harness towards the LHS, up through the vehicle's grommet hole.
25. Ensure the tail harness grommet is seated correctly and secure in place using a cable tie (not supplied).



Wiring Loom Fitting Instructions
To Suit Peugeot 308 Hatch
Part Number 100939-WL

26. Connect the tail harness (tail length 1800mm) 8-way connector to the trailer harness mating 8-way connector.
27. Test the trailer harness function using a light board or multimeter.
28. Secure all harness using cable ties (not supplied).
29. Re-fit all removed parts and secure all fasteners, ensuring there are no squeaks or rattles.
30. Place instructions in glove box after fitment.