

TRAILBOSS

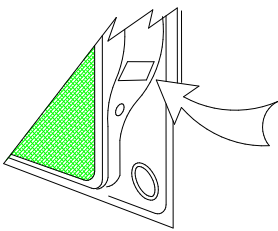
Towbar Fitting Instructions To Suit LAND ROVER FREELANDER 2, Jan 2013 -on Part Number QTRV19L Rating 2000 kg

WARNING:

1. Do not, drill, cut, weld or otherwise modify the tow bar.
2. If you are using electric welding on a motor vehicle, **always** check that the vehicle is not equipped with electronic engine or instrument management equipment. Failure to do so could **destroy** any onboard computers. If in doubt, check with the vehicle's manufacturer.

General:

1. Ensure all hardware items have been included refer to assembly diagram.
2. It is recommended that the instructions are read through and completely understood before making any attempt to fit this product.
3. Be wary of any changes to vehicle designs or other accessories that may conflict with the installation of this product.
4. Before drilling ensure that the area is clear of fuel, electrical & other components.
5. All holes drilled into the body panels shall have all burrs & swarf removed then coated with a suitable rust preventative paint.
6. The high tensile fasteners supplied with this product were used to achieve the specified rating. If replacement is required ensure that fasteners of the same rating & quality are used. Contact an authorized **Trailboss** dealer if further information is required.
7. Ensure that all hardware is fastened to torque list below check fasteners on regular basis.
8. Tow bar load rating sticker provided with this product shall be conspicuously located on inside rear end of the driver's door. **(See diagram below).**
9. Trailboss recommends that you check your tow ball to ensure that it complies with the Australian standards **AS 4177.2**.
10. **PLEASE NOTE:** It is advised to remove your lug or tbn when not actually towing so as to produce a clear view of the vehicles registration plate if obscured, and to also provide maximum available departure angle



Place load rating sticker
inside driver's door here

FOR TOWING PURPOSES ONLY

For towing capacity details please refer to vehicle owner's manual or to the manufacturer. Overloading can void your warranties.

RECOMMENDED ASSEMBLY TORQUE LISTING

<u>Diameter</u>	<u>Grade 8.8 Bolt</u>
M6	9.5 Nm
M8	21.7 Nm
M10	43.4 Nm
M12	77.3 Nm
M16	189.8 Nm

Tow bar Maintenance and Care.

Trailboss recommends that bolt torque's, as listed below, are routinely and regularly inspected and checked for correct tension. Replace any worn or defective parts.

We recommended to remove Tow Ball Mounts (TBM's, tongues or lugs) when not being used for any considerable length of time.

So as to avoid injury, when not towing it is suggested that the tongue, Pull Pin and R-clip are removed then stored in a safe, clean and dry place, away from excessive moisture.

Hitch Pull Pins and spring "R" clips are regularly checked for proper installation. Replace any worn or defective parts.

TRAILBOSS

Towbar Fitting Instructions To Suit LAND ROVER FREELANDER 2, Jan 2013 -on Part Number QTRV19L Rating 2000 kg

11. Remove bumper bar
 - a. Remove taillight assembly via 2 screws on both sides, refer figure 1.
 - b. Remove 2 screws under the mud guard on both sides.
 - c. Remove 1 torx screws in front of mud guard on both sides then remove mud guards.
 - d. Remove 2 torx screws behind plastic wheel guard on both sides, refer figure 2.
 - e. Remove 2 torx screws on top of the bumper, refer figure 3.
 - f. Remove plastic step to gain access to 5 plastic scrivets to be removed, refer figure 4.
 - g. Remove 4 screws under the bumper bar.
 - h. Disconnect any wiring attached to bumper bar before removing rear bumper.
 - i. Remove plastic guards via 4 screws (to be reused).
12. Remove impact beam
 - a. Remove 4 nuts from each side of rear impact beam, refer figure 5.
 - b. Remove M14 set screws attaching towing lug, the screws to be refit to opposite side.
 - c. Removing impact beam.
14. Fitment the towbar via
 - a. Position towbar against chassis rails, for driver side place tow bar between towing hook plate and chassis rail.
 - b. For driver side use two M14x110 bolts, spring washer, flat washer provided to secure towing hook plate and tow bar to the vehicle, refer figure 6
 - c. Attach passenger side tow bar using M14 set screw previously from towing lug attachment.
 - d. Torque all bolts to recommend torque refers page 1.
 - d. Reinstall plastic guards and impact beam.
15. Bumper cut detail
 - a. Establish centre line of bumper bar then mark out as detailed in figure 7
 - b. Cut section of bumper with modified hacksaw or similar device.
 - c. Cut 75mm wide and 85mm high from bottom of the bumper.
 - d. Reinstall the bumper in reverse order in step 11.



Figs 1 remove taillight assembly.



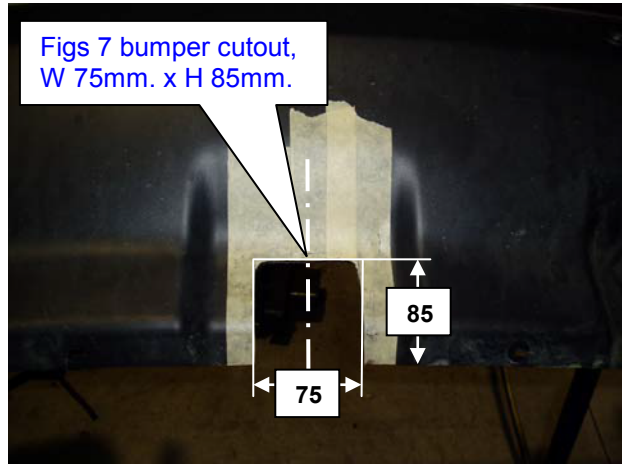
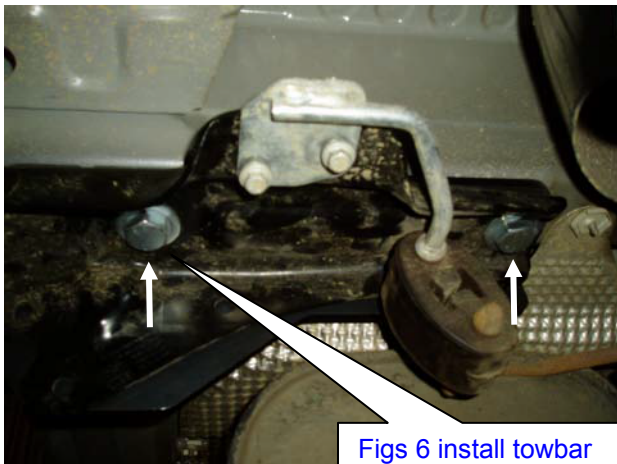
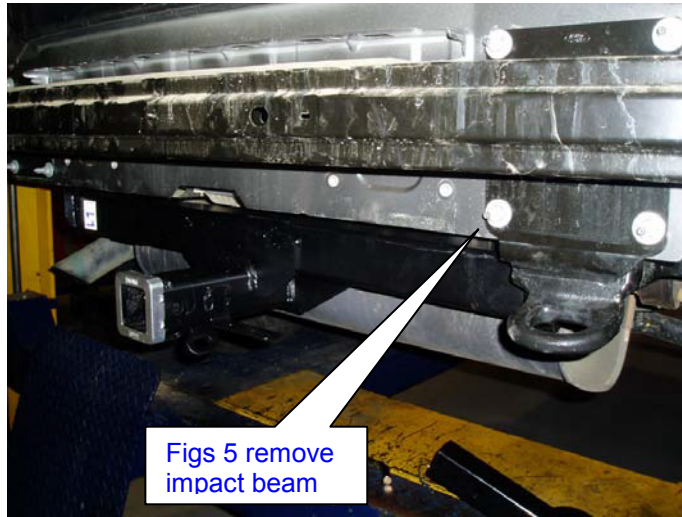
Figs 2 remove torx screws



Figs 3 remove torx screws

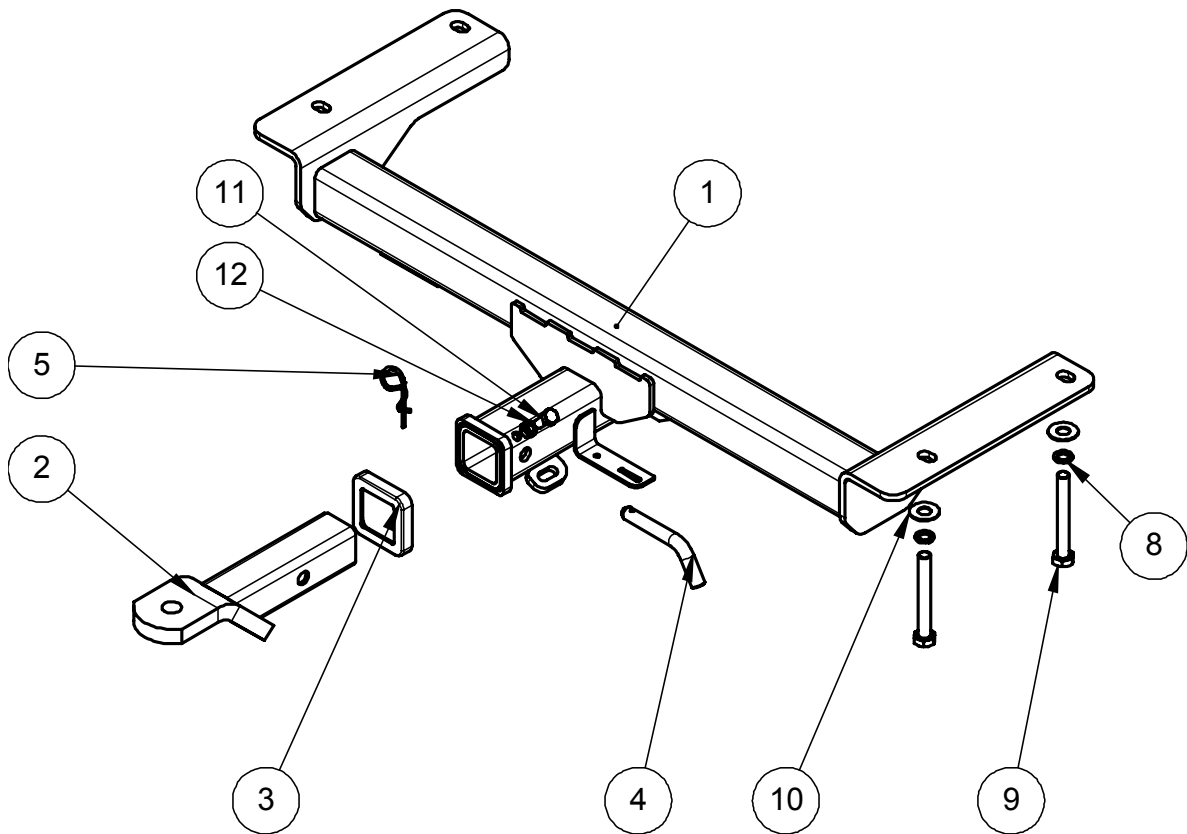
TRAILBOSS

Towbar Fitting Instructions
To Suit LAND ROVER FREELANDER 2, Jan 2013 -on
Part Number QTRV19L
Rating 2000 kg



TRAILBOSS

Towbar Fitting Instructions
 To Suit LAND ROVER FREELANDER 2, Jan 2013 -on
 Part Number QTRV19L
 Rating 2000 kg



ITEM NO.	DESCRIPTION	QTY.
1	RL FREELANDER2 WELDED ASSY	1
2	T.B.MOUNT	1
3	HITCH BOX COLLAR COVER	1
4	PULL PIN	1
5	SPRING COTTER PIN	1
6	FITTING INSTRUCTION	1
7	DOOR RATING STICKER	1
8	CS M14 SPRING WASHER	2
9	M14 X 110 BOLT STD THREAD	2
10	M14 FLAT WASHER	2
11	M10 x 25 1.5P BOLT	1
12	NUT M10 x 1.5P	1



Wiring Loom Fitting Instructions
To Suit Land Rover Freelander 2
Part Number 100977-WL

Wiring Loom Installation Instructions

Land Rover Freelander 2
Part No: 100977-WL

Tail Harness Length Required: 1800mm

Wiring Loom Installation Time: Approx 15 Mins



Wiring Loom Fitting Instructions
To Suit Land Rover Freelander 2
Part Number 100977-WL

1. At the luggage compartment area, remove the floor carpet.
2. Remove the luggage compartment LHS tool tray.
3. On the sheet metal floor of the LHS rear quarter panel beside the factory ECU, remove and discard the existing smaller grommet and drill out the grommet hole to Ø30mm. File down any rough or sharp edges and spray with rust inhibitor.
4. Connect the trailer patch harness 13-way connector to the vehicle 13-way breakout connector located on the LHS vehicle harness near the vehicle ECU.
5. Mount the trailer socket to the tow-bar mounting bracket using M4 fasteners (not supplied). Route the tail harness across the tow-bar towards the RHS of the vehicle and up through the previously drilled out hole.
6. Ensure the tail harness grommet is seated correctly and secured in place using a cable tie (not supplied).
7. Connect the tail harness (tail length 1800mm) 8-way connector to the trailer patch mating 8-way connector.
8. Test the Trailer Harness function using a Light Board or multimeter.
9. Secure all Harnesses using cables ties (not supplied).
10. Re-fit all removed parts and secure all fasteners, ensuring there are no squeaks or rattles.
11. Place the instructions in the glove box after fitment.



FITTING INSTRUCTIONS

Silent Anti-Rattle Hitch Pin (PR0001)

• These fitting instructions are supplied to ensure understanding of how the HITCH PIN should be fitted and used correctly.

• Once installed, we recommend **ALL** instructions are kept and placed in the vehicle glove box.

NOTE: Routine maintenance and inspection of the towbar & HITCH PIN is required. Regularly inspect for wear and check the tightness of the Hitch Pin. Follow instructions below to retighten the nut when necessary.

***Do not tow with your vehicle if the R CLIP or the HITCH PIN is loose or missing. Replacement parts are available from your Pro Series Distributor.**

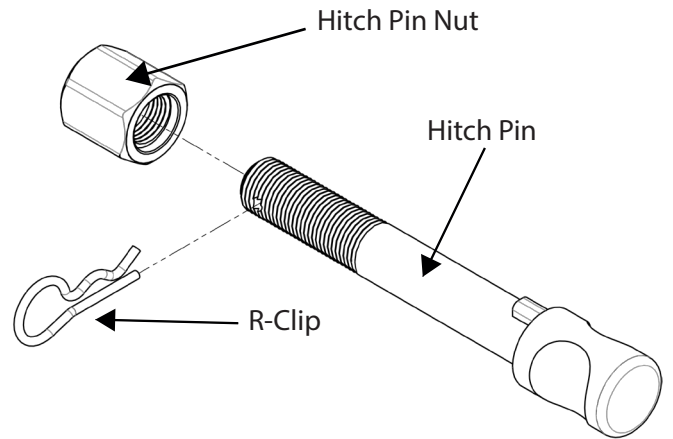


Fig 1. Silent Anti-Rattle Hitch Pin assembly

STEP 1

Insert Trailer Ball Mount (TBM) into towbar HITCHBOX, aligning hole in TBM SHANK with hole in HITCHBOX (Fig 2).

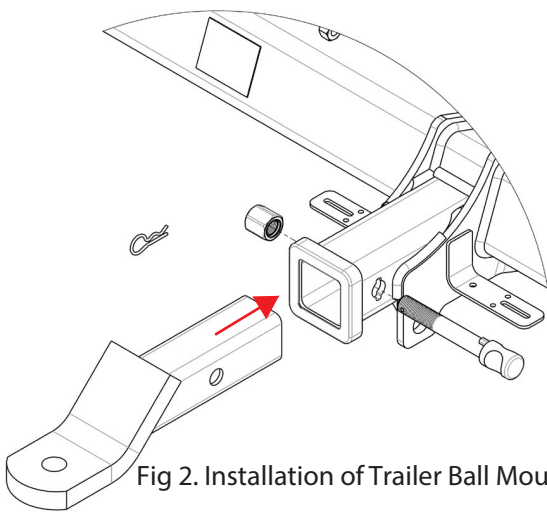


Fig 2. Installation of Trailer Ball Mount

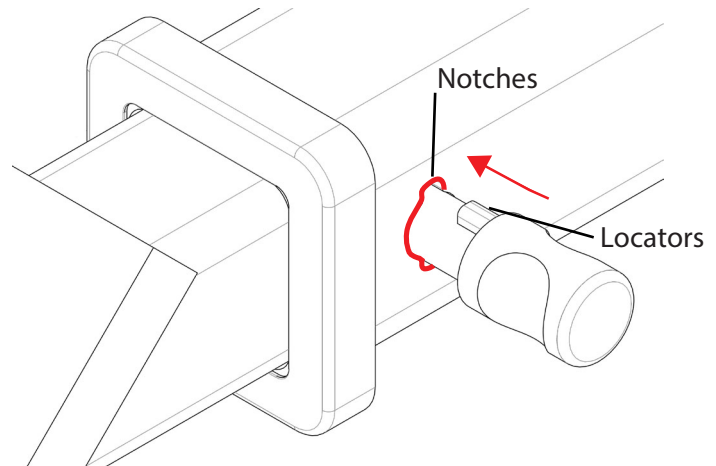


Fig 3. Silent Anti-Rattle Hitch Pin orientation

STEP 2

Insert HITCH PIN through hole in HITCHBOX and hole in TBM SHANK; ensure the LOCATORS are inserted into the NOTCHES in the HITCHBOX (Fig. 3).

STEP 3

Screw HITCH PIN NUT onto HITCH PIN ; tighten HITCH PIN NUT until finger tight, ensuring TBM is restrained from movement.

STEP 4

Tighten HITCH PIN NUT by turning nut a further 1/8th of a turn in the clockwise direction using a 24mm spanner (Fig. 4).

STEP 5

Install HITCH PIN R CLIP through the hole on the HITCH PIN (Fig. 1).

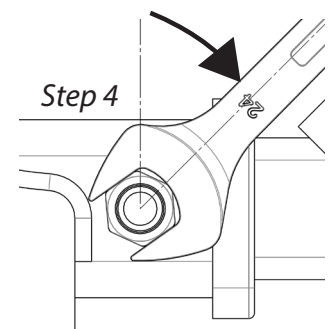


Fig 4. Tightening of Silent Anti-Rattle Hitch Pin Nut