



# TOWBAR INSTALLATION INSTRUCTIONS

PART NUMBER QTRV26

LAND ROVER DEFENDER L663 TBM KIT

## PRODUCT DETAILS:

Part Number:	QTRV26	Maximum Towing Braked:	3500	kg
ECU Number:	N/A	Maximum Towing Unbraked:	750	kg
Tail Harness Length Required:	N/A	Maximum Static Ball Load:	350	kg
TBM/Lug Part Number:	21141			

## FITTING DETAILS:

Towbar Installation Time:	10 Mins.	RPA Disable/Other:	NO
Total Installation Time:	10 Mins.		
Bumper Cut Required:	No		

### TRAILBOSS RECOMMENDS THAT INSTRUCTIONS ARE READ AND UNDERSTOOD COMPLETELY PRIOR TO FITMENT.

#### BEFORE YOU START:

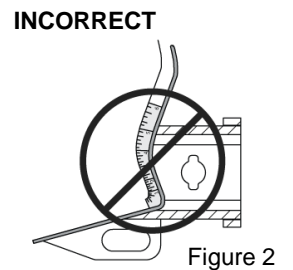
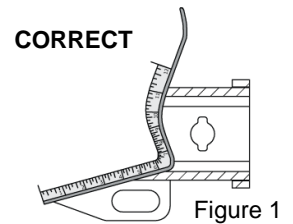
Check all hardware items have been included refer to assembly diagram.  
Please ensure this towbar is only fitted to vehicle models as per Trailboss application guide.

#### Bumper Cuts

Vehicle and bumper variations can and do occur during vehicle manufacture after initial towbar design. Fitment of towbar to vehicle and accuracy of bumper cut must be assessed prior to any bumper modifications made. Incorrect bumper cuts are not covered under Trailboss warranty.

**NOTE: Bumper cuts need to be approached with care, refer to notes below.**

- Bumper centreline – where the centreline of the bumper needs to be determined, the installer must assess centre point by measurement of bumper width or determining two symmetrical reference points to give centreline.
- Bumper edge – To assist with accurate bumper cut measurement, reference to the start of the bumper edge is now being commonly used.
  - Measure from bottom edge along bumper and around corner to the 70 mm point (Figure 1).
  - Do not measure from visible bumper front of corner, upwards (Figure 2).



#### Drilling

- For any required drilling during installation, ensure that the area is clear of fuel, electrical & other components that may be damaged.
- All holes drilled into metal body panels shall have all burrs & swarf removed then coated with a suitable rust preventative paint.

#### Bolts/Fasteners

- Ensure that all hardware is fastened to correct torque as specified in this fitting instruction.
- All fasteners supplied with this product are used to achieve a specified clamp loading. If replacement is required ensure that fasteners of the same grade and class are used.

**NOTE: Achieving correct torque is critical to proper installation and responsibility of the installer. Towbar failures attributed to tension issues from over tightening or under tightening are not covered by Trailboss warranty.**

#### Product Labels

- a. Towbar load rating sticker provided with this product shall be conspicuously located on inside rear end of the driver's door.

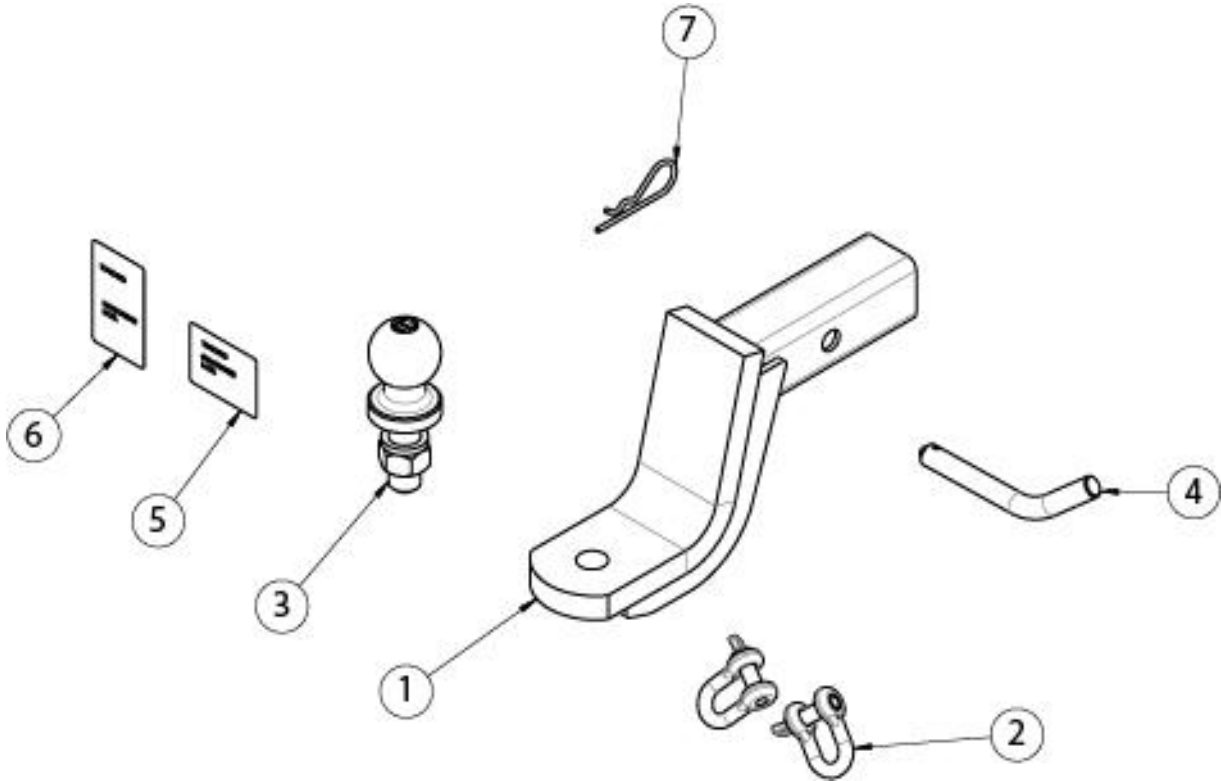
### WARNING:

**Do not, drill, cut, weld or otherwise modify the towbar.**

**FOR TOWING PURPOSES ONLY - This towbar is designed and tested by Trailboss to adhere to ADR 62/02 which provides only for the expected load demands of towing.**

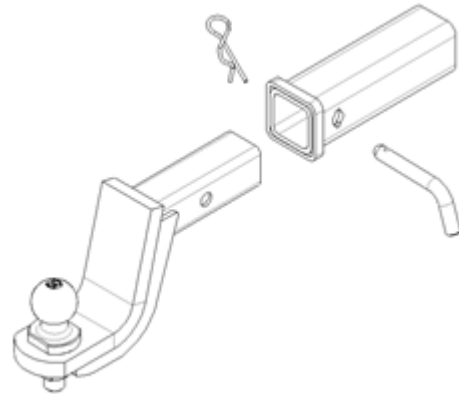
PLACE THESE INSTRUCTIONS IN THE VEHICLE'S GLOVEBOX AFTER INSTALLATION

**i** TOWBAR ASSEMBLY DIAGRAM

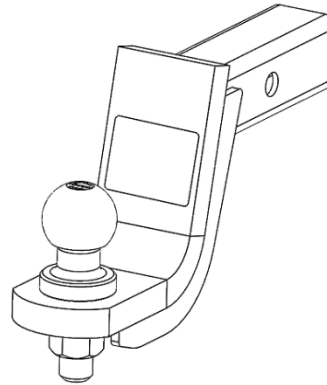


ITEM	DESCRIPTION	QTY
1	TRAILER BALL MOUNT	1
2	"D" SHACKLE 10mm	2
3	TOWBALL 50mm	1
4	PIN PULL	1
5	COMPLIANCE LABEL	1
6	DOOR RATING LABEL	1
7	R CLIP	1

1. Fit TBM assembly to the towbar hitch receiver in the downward-position and secure with Pull Pin. Ensure to fit the R-Clip to the Pull Pin.
2. Fit the D-Shackles to the chain connection lugs.



3. Affix the compliance label onto the TBM.



4. Place load rating sticker inside driver's door next to existing towbar load rating label.

