

TRAILBOSS

Towbar Fitting Instructions
To Suit **SUBARU OUTBACK/LIBERTY**
Part Number **QTSB316L**
Rating **1800/180** kg

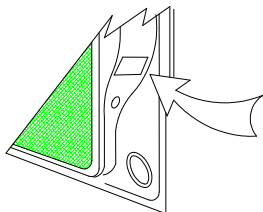
PLACE THESE INSTRUCTIONS IN THE VEHICLE'S GLOVEBOX AFTER INSTALLATION IS COMPLETED

WARNING:

1. Do not, drill, cut, weld or otherwise modify the tow bar.
2. If you are using electric welding on a motor vehicle, **always** check that the vehicle is not equipped with electronic engine or instrument management equipment. Failure to do so could **destroy** any onboard computers. If in doubt, check with the vehicle's manufacturer.
3. The high tensile fasteners supplied with this product were used to achieve the specified rating. If replacement is required ensure that fasteners of the same rating & quality are used. Contact an authorised **Trailboss** dealer if further information is required.
4. If TBM is used in inverted position tow ball may make contact with rear tailgate when lowered, which could cause damage.

General:

1. Ensure all hardware items have been included refer to assembly diagram.
2. It is recommended that the instructions are read through and completely understood before making any attempt to fit this product.
3. Be wary of any changes to vehicle designs or other accessories that may conflict with the installation of this product.
4. Before drilling ensure that the area is clear of fuel, electrical & other components.
5. All holes drilled into the body panels shall have all burrs & swarf removed then coated with a suitable rust preventative paint.
6. For vehicles that require the bumper to be cut. Ensure cut out area is in correct position on the vehicle prior to cutting the bumper.
7. The high tensile fasteners supplied with this product were used to achieve the specified rating. If replacement is required ensure that fasteners of the same rating & quality are used. Contact an authorized **Trailboss** dealer if further information is required.
8. Ensure that all hardware is fastened to torque list below check fasteners on regular basis.
9. Tow bar load rating sticker provided with this product shall be conspicuously located on inside rear end of the driver's door. **(See diagram below).**
10. Trailboss recommends that you check your tow ball to ensure that it complies with the Australian standards **AS 4177.2**.
11. **PLEASE NOTE:** It is advised to remove your LUG or TBM when not actually towing so as to produce a clear view of the vehicles registration plate if obscured, and to also provide maximum available departure angle
12. Pull Pin must be fit in down position.



Place load rating sticker
inside driver's door here

FOR TRAILER TOWING PURPOSES ONLY
For towing capacity details please refer to vehicle owner's manual or to the manufacturer. Overloading can void your warranties.

RECOMMENDED ASSEMBLY TORQUE LISTING

Diameter	Grade 8.8 Bolt
M6	9.5 Nm
M8	21.7 Nm
M10	43.4 Nm
M12	77.3Nm
M14	146 Nm
M16	189.8 Nm

Tow bar Maintenance and Care.

Trailboss recommends that bolt torque's, as listed below, are routinely and regularly inspected and checked for correct tension. Replace any worn or defective parts.

We recommended to remove Tow Ball Mounts (TBM's, tongues or lugs) when not being used for any considerable length of time.

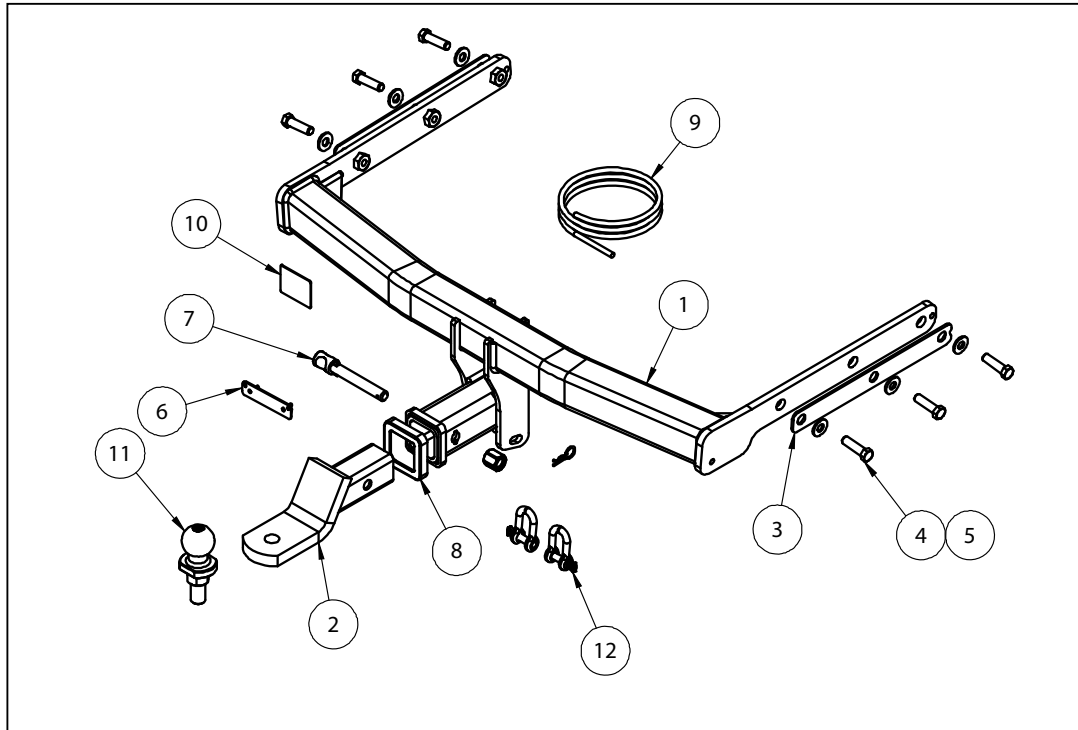
So as to avoid injury, when not towing it is suggested that the tongue, Pull Pin and R-clip are removed then stored in a safe, clean and dry place, away from excessive moisture.

Hitch Pull Pins and spring "R" clips are regularly checked for proper installation. Replace any worn or defective parts.



Towbar Fitting Instructions
 To Suit **SUBARU OUTBACK/LIBERTY**
 Part Number **QTSB316L**
 Rating **1800/180 kg**

PLACE THESE INSTRUCTIONS IN THE VEHICLE'S GLOVEBOX AFTER INSTALLATION IS COMPLETED



QTY.	DESCRIPTION	ITEM NO.
1	WELDED ASSY	1
1	CLASS4 TBM ASSY	2
2	SPACER PLATE	3
6	BOLT M12x45 1.75P	4
6	WASHER FLAT M12	5
1	PLUG BRACKET	6
1	ANTI RATTLE PULL PIN ASSY	7
1	HITCH BOX COLLAR COVER	8
1	WIRING LOOM	9
1	ACRYLIC COMPLIANCE PLATE	10
1	50mm TOWBALL	11
2	10mm D SHACKLE	12

TRAILBOSS

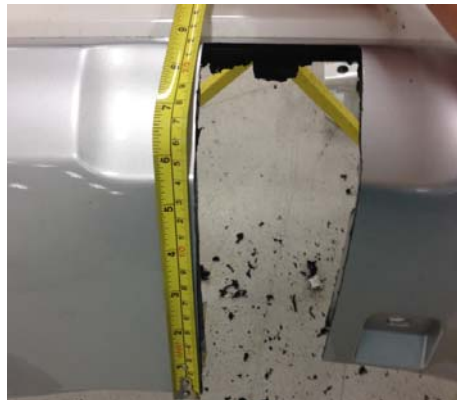
Towbar Fitting Instructions
To Suit **SUBARU OUTBACK/LIBERTY**
Part Number **QTSB316L**
Rating **1800/180 kg**

PLACE THESE INSTRUCTIONS IN THE VEHICLE'S GLOVEBOX AFTER INSTALLATION IS COMPLETED

INSTRUCTION:

1. Remove 3x Screws from the LHS mud flap on the inside of the wheel arch. Remove 1x Scrivet located on the underside of the mud flap cover, and place the mud flap aside. Repeat for RHS.
2. Remove 1x pop Scrivet from the top of the LHS wheel arch. Repeat for RHS.
3. Remove 7x Scrivets from the underside of the bumper.
4. Remove 2x Scrivets from the LHS taillight cover. Set the taillight cover aside and remove 2x Screws from the LHS taillight. Dislodge the LHS taillight, disconnect the wiring and remove the LHS taillight assembly. Repeat for RHS.
5. Remove 1x Screw below the taillight on the LHS of the bumper. Repeat for RHS.
6. Remove the Bumper via unclipping the sides and pulling firmly. When removing the bumper, ensure any wiring is disconnected.
7. Remove 4 x Nuts on each side of the impact beam. Discard the Impact Beam.
8. Unhook the two Exhaust hangers for both LHS & RHS. Remove 4x Screws retaining the LHS exhaust shield & set aside. Repeat for RHS.
9. Offer the main Towbar assembly to the vehicle, via inserting the sidearms into the chassis rail. Loosely secure each side with 3 x M12 Bolts and 3x M12 Flat Washers. Tighten all Bolts to the following torque settings:

6 x M12 x 1.75P = 85Nm
10. Perform the bumper cut out as shown in the following image by using the bumper cut template found on the final page of these instructions. Centre the template on the lower edge of the bumper and cut out. Re-fit bumper.
11. Re-fit all removed parts and secure all fasteners, ensuring there are no squeaks or rattles. Place the fitting instructions in the glove box after fitment.

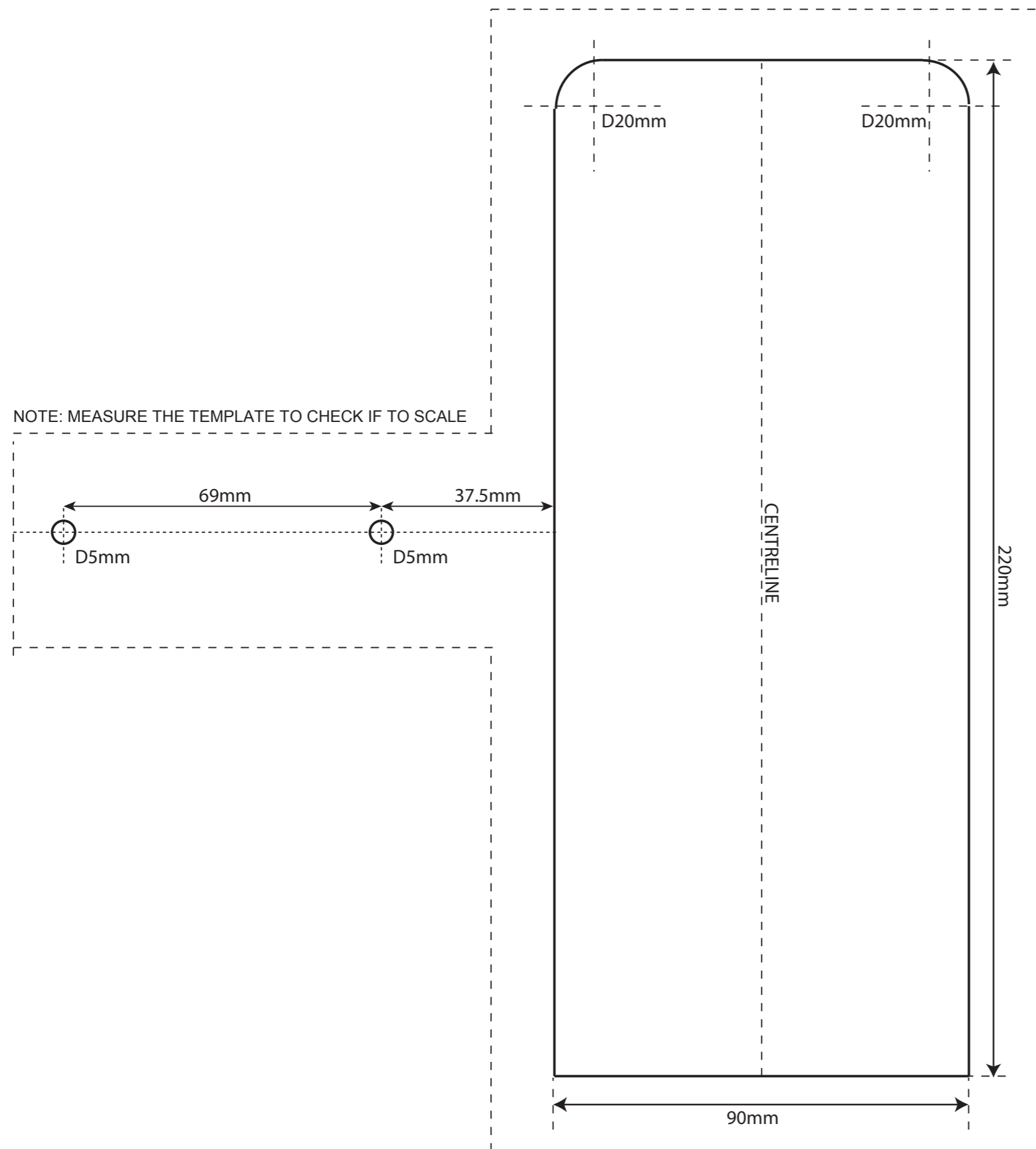




Towbar Fitting Instructions
To Suit SUBARU OUTBACK/LIBERTY
Part Number **QTSB316L**
Rating **1800/180 kg**

PLACE THESE INSTRUCTIONS IN THE VEHICLE'S GLOVEBOX AFTER INSTALLATION IS COMPLETED

SUBARU OUTBACK/LIBERTY BUMPER CUT TEMPLATE





Wiring Loom Fitting Instructions
To Suit Subaru Liberty (Sedan & Wagon), Outback & Forester (2003 – 2012),
Subaru XV, Impreza (2007 – 2012), Impreza (2012 – Onwards), Forester (2013 –
Onwards), Liberty / Outback Wagon (2015 – Onwards)
Part Number 100201-WL

Wiring Loom Installation Instructions

Subaru Liberty (Sedan & Wagon),
Outback & Forester (2003 – 2012), Subaru XV, Impreza (2007 – Onwards),
Impreza (2012 – Onwards), Forester (2013 – Onwards), Liberty / Outback
Wagon (2015 – Onwards)
Part No: 100201-WL

Tail Harness Length Required:
Liberty / Outback - 1200mm (Wagon) (includes 2015 Onwards)
Liberty – 1800mm (Sedan)
Forester – 1800mm
Subaru XV – 1200mm (WLT024)
Subaru Impreza (2007 – 2012) -1200mm
Subaru Impreza (2012 – Onwards) – 1200mm (WLT024)

Liberty Wagon & Outback – Page 2
Liberty Sedan – Page 3
Forester (2003 – 2012) – Page 4
Subaru XV – Pages 5 – 6
Subaru Impreza (2007 – 2012) & Impreza (2012 – Onwards) – Pages 7 – 8
Forester (2013 – Onwards) – Page 9 – 10
Liberty / Outback Wagon (2015 – Onwards) – Page 11

Wiring Loom Installation Time: Approx. 25 Mins



Wiring Loom Fitting Instructions

To Suit Subaru Liberty (Sedan & Wagon), Outback & Forester (2003 – 2012), Subaru XV, Impreza (2007 – 2012), Impreza (2012 – Onwards), Forester (2013 – Onwards), Liberty / Outback Wagon (2015 – Onwards)
Part Number 100201-WL

The following steps are for the Liberty Wagon & Outback models only. Refer to the front cover for other vehicle page locations.

1. In the luggage compartment area, remove the rear sun shade and all floor trims.
2. Remove the LHS and RHS tail lights.
3. Remove the rear bumper fascia fasteners and the rear bumper fascia.
4. Remove the rear trim.
5. Remove the rear passenger seat cushion.
6. Remove the LHS rear passenger sill trim.
7. Remove the two fasteners from the LHS rear luggage compartment trim.
8. Remove the LHS luggage compartment trim fasteners and then remove the LHS luggage compartment trim.
9. On the outer LHS rear quarter of the vehicle, locate and remove the grommet next to the vent. Widen the grommet hole to Ø30mm using a step drill.
10. File any rough or sharp edges and spray on rust inhibitor.

Note: For vehicles fitted with sunroofs, drill a Ø2mm pilot hole in the area below the sunroof drain. Drill out the hole to Ø30mm using a step drill. File any sharp or rough edges and spray on rust inhibitor.

11. Secure the tail harness socket (tail length 1200mm) to the towbar mounting bracket using M4 fasteners (not supplied).
12. Route the tail harness along the towbar and into the LHS rear quarter grommet.
13. Inside the luggage compartment LHS; retrieve the tail harness from the grommet hole ensuring that the tail harness grommet is seated correctly.
14. Locate and free the vehicle 10-way female break out connector.
15. Connect the trailer patch (100201-WL) to the tail harness.
16. Connect the trailer patch to the break out connector.
17. Test the trailer wiring harness function using a light board or multimeter.
18. Secure all harnesses using cables ties (not supplied).
19. Re-fit all removed parts and secure all fasteners, ensuring there are no squeaks or rattles.
20. Place the instructions in glove box after fitment.



Wiring Loom Fitting Instructions

To Suit Subaru Liberty (Sedan & Wagon), Outback & Forester (2003 – 2012), Subaru XV, Impreza (2007 – 2012), Impreza (2012 – Onwards), Forester (2013 – Onwards), Liberty / Outback Wagon (2015 – Onwards)
Part Number 100201-WL

The following steps are for Liberty Sedan models only. Refer to the front cover for other vehicle page locations.

1. Remove the rear bumper from the vehicle.
2. Remove the luggage compartment floor carpet.
3. Remove the rear trim by first removing the indicated fasteners.
4. Remove the LHS luggage compartment trim by first removing the two fasteners.
5. On the outer LHS rear quarter of the vehicle, locate and remove the grommet next to the vent (in between the rear wheel arch and the vent). Widen the grommet hole to Ø30mm using a step drill. File the grommet hole of any rough or sharp edges and spray on rust inhibitor.

Note: For vehicles fitted with sunroofs, drill a Ø2mm pilot hole in the area below the sunroof drain. Drill out the hole to Ø30mm using a step drill. File any sharp or rough edges and spray on rust inhibitor.

6. Secure the tail harness socket (tail length 1800mm) to the towbar mounting bracket using M4 fasteners (not supplied).
7. Route the tail harness along the towbar and into the LHS rear quarter grommet.
8. Slide the tail harness grommet into the desired position, ensuring that it is seated correctly into the vehicle grommet hole. Secure with a cable tie (not supplied).
9. Connect the tail harness 10-way connector into the trailer patch (P/no: 100201-WL) 10-way mating connector.
10. Route the trailer patch towards the vehicle break out connector, located at the rear of the vehicle near the LHS of the wheel well.
11. Connect the trailer patch to the vehicle break out connector.
12. Re-fit the rear bumper fascia.
13. Secure all harnesses to the vehicle using cable ties (not supplied).
14. Test the trailer wiring harness function using a trailer light board or multimeter.
15. Re-fit all removed parts and secure all fasteners.
16. Place the instructions in the glove box after fitment.



Wiring Loom Fitting Instructions

To Suit Subaru Liberty (Sedan & Wagon), Outback & Forester (2003 – 2012), Subaru XV, Impreza (2007 – 2012), Impreza (2012 – Onwards), Forester (2013 – Onwards), Liberty / Outback Wagon (2015 – Onwards)
Part Number 100201-WL

The following steps are for Forester (2003 – 2012) models only. Refer to the front cover for other vehicle page locations.

1. In the LHS of the luggage compartment, remove the tool tray by first removing the two clips.
2. On the outer LHS rear quarter of the car, locate and remove the grommet near the vent. Widen the grommet hole to Ø30mm using a step drill.
3. File any rough or sharp edges and spray on rust inhibitor.

Note: For vehicles fitted with sunroofs, drill an Ø2mm pilot hole in the area below the sunroof drain. Drill out the hole to Ø30mm using a step drill. File any rough or sharp edges and spray on rust inhibitor.

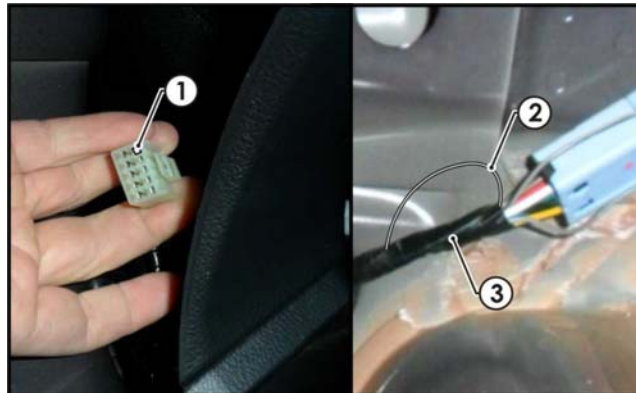
4. Secure the tail harness socket (tail length 1200mm) to the towbar mounting bracket using M4 fasteners (not supplied).
5. Route the tail harness along the towbar and into the LHS rear quarter grommet.
6. Inside the LHS of the luggage compartment, retrieve the tail harness from the grommet hole ensuring that the tail harness grommet is seated correctly.
7. Locate and free the vehicle 10-way female break out connector.
8. Connect the trailer patch (100201-WL) to the tail harness.
9. Connect the trailer patch to the break out connector.
10. Test the trailer wiring harness function using a light board or multimeter.
11. Secure all harnesses using cables ties (not supplied).
12. Re-fit all removed parts and secure all fasteners, ensuring there are no squeaks or rattles.
13. Place the instructions in glove box after fitment.

Wiring Loom Fitting Instructions

To Suit Subaru Liberty (Sedan & Wagon), Outback & Forester (2003 – 2012),
Subaru XV, Impreza (2007 – 2012), Impreza (2012 – Onwards), Forester (2013 –
Onwards), Liberty / Outback Wagon (2015 – Onwards)
Part Number 100201-WL

The following steps are for Subaru XV models only. Refer to the front cover for other vehicle page locations.

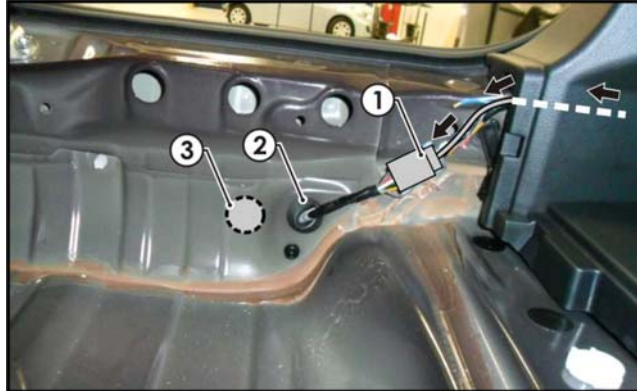
1. In the luggage compartment, remove the floor carpet cover and the parcel shelf.
2. Remove the two luggage compartment storage trays by first removing the clips.
3. Remove the rear luggage compartment trim by first removing the two clips and pulling in an upwards direction.
4. Remove the LHS upper 'C' pillar trim by releasing the one screw.
5. Dislodge the LHS luggage compartment trim by removing the two screws.
6. On the LHS rear quarter panel, connect the trailer patch (100201-WL) connector to the vehicle break out connector.
7. To enable the RPA cutout, splice to the loose GREY/BLACK wire from the tail harness into Pin 1 of the connector (1).
8. On the tail harness splice the GREY wire (2) back into any ground wire of the harness (3).



Wiring Loom Fitting Instructions

To Suit Subaru Liberty (Sedan & Wagon), Outback & Forester (2003 – 2012), Subaru XV, Impreza (2007 – 2012), Impreza (2012 – Onwards), Forester (2013 – Onwards), Liberty / Outback Wagon (2015 – Onwards)
Part Number 100201-WL

9. Route the trailer patch (1) along the rear luggage compartment, towards the existing vehicle grommet (2) as shown.



Note: If vehicle grommet is occupied as sunroof drainage, drill a Ø30mm hole (3) in the location shown.

10. Mount the trailer socket to the tow bar mounting bracket using M4 fasteners (not supplied).
11. Route the tail harness across the tow bar towards the RHS of the vehicle and up through the previously drilled out hole.
12. Ensure the tail harness grommet is seated correctly and secure in place using a cable tie (not supplied).
13. Connect the tail harness (tail length 1200mm) 8-way connector to the trailer patch mating 8-way connector.
14. Test the trailer wiring harness function using a light board or multi meter.
15. Secure all harnesses using cable ties (not supplied).
16. Re-fit all removed parts and secure all fasteners, ensuring there are no squeaks or rattles.
17. Place the fitting instructions in the glove box after fitment.

TRAILBOSS

Wiring Loom Fitting Instructions

To Suit Subaru Liberty (Sedan & Wagon), Outback & Forester (2003 – 2012), Subaru XV, Impreza (2007 – 2012), Impreza (2012 – Onwards), Forester (2013 – Onwards), Liberty / Outback Wagon (2015 – Onwards)
Part Number 100201-WL

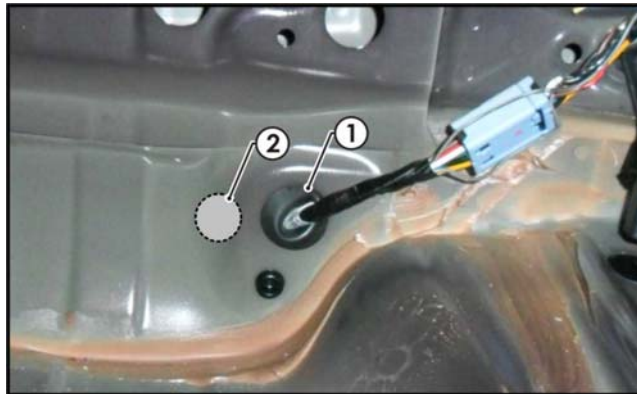
The following steps are for Subaru Impreza (2007 – 2012) & Impreza (2012 – Onwards) models only. Refer to the front cover for other vehicle page locations.

1. Inside the luggage compartment, remove the floor carpet cover.
2. Remove the rear luggage compartment trim by first releasing the three fasteners.
3. On the LHS of the luggage compartment, remove the foam support cover.

The following steps 4 – 6 are for Subaru Impreza (2012 – Onwards) models only.

4. Remove the three clips and then remove the LHS luggage compartment trim.
5. To enable the RPA cutout, splice the loose GREY/WHITE wire from the tail harness to the PIN 1 (PURPLE wire) of the connector.
6. On the tail harness splice the GREY wire back into any ground wire of the harness.
7. On the RHS rear wheel well, remove the blanking grommet (1) and drill a Ø30mm hole.
8. File any rough or sharp edges and spray with rust inhibitor.

Note: If grommet is occupied drill a Ø30mm hole (2) next to the occupied grommet.



The following steps 9 – 11 are for Subaru Impreza (2007 – 2012) models only.

9. Locate the vehicle break out connector in the LHS rear quarter panel.
10. Connect the trailer patch (100201-WL) connector to the vehicle's break out connector.
11. Route the trailer patch towards the rear vehicle grommet.



Wiring Loom Fitting Instructions

To Suit Subaru Liberty (Sedan & Wagon), Outback & Forester (2003 – 2012), Subaru XV, Impreza (2007 – 2012), Impreza (2012 – Onwards), Forester (2013 – Onwards), Liberty / Outback Wagon (2015 – Onwards)
Part Number 100201-WL

The following steps 12 – 14 are for Subaru Impreza (2012 – Onwards) models only.

12. Locate the vehicle break out connector on the LHS rear quarter panel.
13. Connect the trailer patch (100201-WL) connector to the vehicle's break out connector.
14. Route the trailer patch towards the rear vehicle grommet.
15. Mount the trailer socket to the tow bar mounting bracket using M4 fasteners (not supplied).
16. Route the tail harness across the tow bar towards the LHS of the vehicle and up through the previously drilled out hole.
17. Ensure the tail harness grommet is seated correctly and secure in place using a cable tie (not supplied).
18. Connect the tail harness (tail length 1200mm) 8-way connector to the trailer patch mating 8-way connector.
19. Test the trailer wiring harness function using a light board or multi meter.
20. Secure all harnesses using cable ties (not supplied).
21. Re-fit all removed parts and secure all fasteners, ensuring there are no squeaks or rattles.
22. Place the fitting instructions in the glove box after fitment.



Wiring Loom Fitting Instructions

To Suit Subaru Liberty (Sedan & Wagon), Outback & Forester (2003 – 2012), Subaru XV, Impreza (2007 – 2012), Impreza (2012 – Onwards), Forester (2013 – Onwards), Liberty / Outback Wagon (2015 – Onwards)
Part Number 100201-WL

The following steps are for Forester (2013 – Onwards). Refer to the front page for vehicle page locations.

1. In the luggage compartment, remove the floor carpet cover.
2. Remove both the LHS & RHS luggage compartment trim covers.
3. Remove the luggage compartment LHS & RHS foam supports by first removing the four clips.
4. Remove the rear luggage compartment trim by pulling in an upwards direction.
5. Fold the rear passenger seats forwards.
6. Unclip the rear seat cover.
7. Remove the rear passenger seat trim by first removing the seven clips.
8. On the LHS of the luggage compartment, remove the three fasteners securing the luggage compartment trim.
9. Dislodge the LHS luggage compartment trim.
10. Locate the LHS break out connector.
11. Connect the trailer patch (P/No: 100201-WL) connector to the vehicle's break out connector.
12. Route the trailer patch towards the existing vehicle grommet.

Note: If the grommet is occupied, drill a Ø30mm hole next to it. File any rough or sharp edges and spray with silicone spray.

13. Mount the trailer socket to the tow bar mounting bracket using M4 fasteners (not supplied).
14. Route the tail harness across the tow bar towards the LHS of the vehicle and up through the grommet hole.
15. Ensure the tail harness grommet is seated correctly and secure in place using a cable (not supplied).
16. Connect the tail harness (tail length 1800mm) 8-way connector to the trailer patch mating 8-way connector.



Wiring Loom Fitting Instructions

To Suit Subaru Liberty (Sedan & Wagon), Outback & Forester (2003 – 2012),
Subaru XV, Impreza (2007 – 2012), Impreza (2012 – Onwards), Forester (2013 –
Onwards), Liberty / Outback Wagon (2015 – Onwards)
Part Number 100201-WL

17. Test the trailer wiring harness function using a light board or multi meter.
18. Secure all harnesses using cable ties (not supplied).
19. Re-fit all removed parts and secure all fasteners, ensuring there are no squeaks or rattles.
20. Place the fitting instructions in the glove box after fitment.



Wiring Loom Fitting Instructions

To Suit Subaru Liberty (Sedan & Wagon), Outback & Forester (2003 – 2012), Subaru XV, Impreza (2007 – 2012), Impreza (2012 – Onwards), Forester (2013 – Onwards), Liberty / Outback Wagon (2015 – Onwards)
Part Number 100201-WL

The following Steps for Liberty / Outback Wagon (2015 – Onwards). Refer to the front cover for other vehicle page locations.

1. In the luggage compartment, remove the rear parcel shelf.
2. Remove the rubber floor cover.
3. Remove the spare wheel cover and fold down the rear passenger LHS seat.
4. On the LHS of the luggage compartment trim, remove the fasteners from underneath all the trim latches and dislodge the LHS luggage compartment trim.
5. On the rear LHS of the vehicle exterior, next to the towbar centre, drill a Ø30mm hole into the vehicle sheet metal. Ensure drilling is clear of objects on the otherside.
6. File down any rough or sharp edges and apply rust inhibitor (not supplied).
7. Mount the trailer socket to the rear bumper via the tow bar mounting bracket (supplied with the towbar kit) using M4 fasteners (not supplied).
8. Route the tail harness (tail length: 1200mm) towards the LHS of the vehicle and up through the drilled grommet hole.
9. Connect the trailer patch (P/No: 100201-WL) to the vehicle break-out connector.
10. Connect the trailer patch tail connector to the tail harness connector.
11. At the vehicle exterior, ensure the tail harness grommet is seated correctly and secured into place using a cable tie (not supplied).
12. To enable the ISS (Intelligent Start Stop) cutout, splice the loose GREY/BLACK wire from the tail harness to the PIN 1 (GREY wire) of the connector.
13. On the tail harness splice the GREY wire back into any ground wire of the harness.
Note: Due to possible vehicle variations, always confirm vehicle harness wires using a multi-meter.
14. Test the trailer wiring harness function using a light board or multi meter.
15. Secure all harnesses using cable ties (not supplied).
16. Re-fit all removed parts and secure all fasteners, ensuring there are no squeaks or rattles
17. Place the fitting instructions in the glove box after fitment.



FITTING INSTRUCTIONS

Silent Anti-Rattle Hitch Pin (PR0001)

• These fitting instructions are supplied to ensure understanding of how the HITCH PIN should be fitted and used correctly.

• Once installed, we recommend **ALL** instructions are kept and placed in the vehicle glove box.

NOTE: Routine maintenance and inspection of the towbar & HITCH PIN is required. Regularly inspect for wear and check the tightness of the Hitch Pin. Follow instructions below to retighten the nut when necessary.

***Do not tow with your vehicle if the R CLIP or the HITCH PIN is loose or missing. Replacement parts are available from your Pro Series Distributor.**

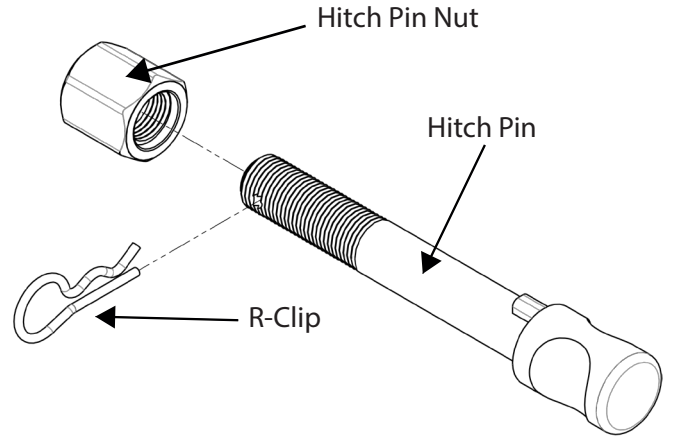


Fig 1. Silent Anti-Rattle Hitch Pin assembly

STEP 1

Insert Trailer Ball Mount (TBM) into towbar HITCHBOX, aligning hole in TBM SHANK with hole in HITCHBOX (Fig 2).

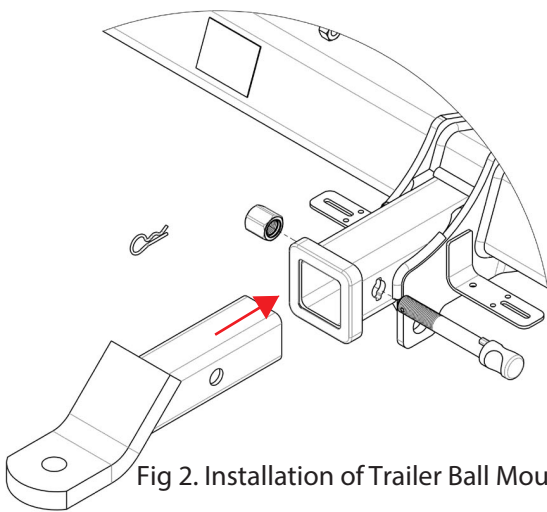


Fig 2. Installation of Trailer Ball Mount

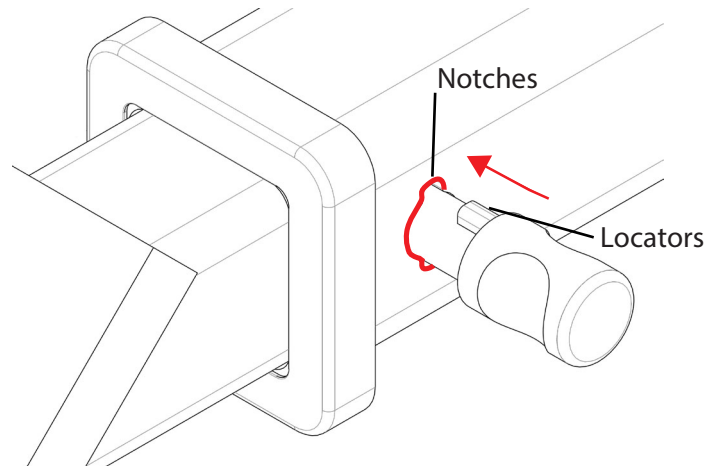


Fig 3. Silent Anti-Rattle Hitch Pin orientation

STEP 2

Insert HITCH PIN through hole in HITCHBOX and hole in TBM SHANK; ensure the LOCATORS are inserted into the NOTCHES in the HITCHBOX (Fig. 3).

STEP 3

Screw HITCH PIN NUT onto HITCH PIN; tighten HITCH PIN NUT until finger tight, ensuring TBM is restrained from movement.

STEP 4

Tighten HITCH PIN NUT by turning nut a further 1/8th of a turn in the clockwise direction using a 24mm spanner (Fig. 4).

STEP 5

Install HITCH PIN R CLIP through the hole on the HITCH PIN (Fig. 1).

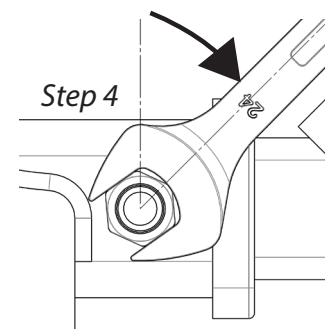


Fig 4. Tightening of Silent Anti-Rattle Hitch Pin Nut