

TRAILBOSS

Towbar Fitting Instructions
To Suit **QTSB319L**
Part Number **SUBARU LEVORG V1 CL4**
Rating **1200/120 kg**

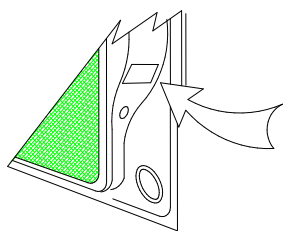
PLACE THESE INSTRUCTIONS IN THE VEHICLE'S GLOVEBOX AFTER INSTALLATION IS COMPLETED

WARNING:

1. Do not, drill, cut, weld or otherwise modify the tow bar.
2. If you are using electric welding on a motor vehicle, **always** check that the vehicle is not equipped with electronic engine or instrument management equipment. Failure to do so could **destroy** any onboard computers. If in doubt, check with the vehicle's manufacturer.
3. The high tensile fasteners supplied with this product were used to achieve the specified rating. If replacement is required ensure that fasteners of the same rating & quality are used. Contact an authorised **Trailboss** dealer if further information is required.
4. If TBM is used in inverted position tow ball may make contact with rear tailgate when lowered, which could cause damage.

General:

1. Ensure all hardware items have been included refer to assembly diagram.
2. It is recommended that the instructions are read through and completely understood before making any attempt to fit this product.
3. Be wary of any changes to vehicle designs or other accessories that may conflict with the installation of this product.
4. Before drilling ensure that the area is clear of fuel, electrical & other components.
5. All holes drilled into the body panels shall have all burrs & swarf removed then coated with a suitable rust preventative paint.
6. For vehicles that require the bumper to be cut. Ensure cut out area is in correct position on the vehicle prior to cutting the bumper.
7. The high tensile fasteners supplied with this product were used to achieve the specified rating. If replacement is required ensure that fasteners of the same rating & quality are used. Contact an authorized **Trailboss** dealer if further information is required.
8. Ensure that all hardware is fastened to torque list below check fasteners on regular basis.
9. Tow bar load rating sticker provided with this product shall be conspicuously located on inside rear end of the driver's door. **(See diagram below)**.
10. Trailboss recommends that you check your tow ball to ensure that it complies with the Australian standards **AS 4177.2**.
11. **PLEASE NOTE:** It is advised to remove your LUG or TBM when not actually towing so as to produce a clear view of the vehicles registration plate if obscured, and to also provide maximum available departure angle



Place load rating sticker
inside driver's door here

FOR TRAILER TOWING PURPOSES ONLY
For towing capacity details please refer to vehicle owner's manual or to the manufacturer. Overloading can void your warranties.

RECOMMENDED ASSEMBLY TORQUE LISTING

Diameter	Grade 8.8 Bolt
M6	9.5 Nm
M8	21.7 Nm
M10	43.4 Nm
M12	77.3Nm
M14	146 Nm
M16	189.8 Nm

Tow bar Maintenance and Care.

Trailboss recommends that bolt torque's, as listed below, are routinely and regularly inspected and checked for correct tension. Replace any worn or defective parts.

We recommended to remove Tow Ball Mounts (TBM's, tongues or lugs) when not being used for any considerable length of time.

So as to avoid injury, when not towing it is suggested that the tongue, Pull Pin and R-clip are removed then stored in a safe, clean and dry place, away from excessive moisture.

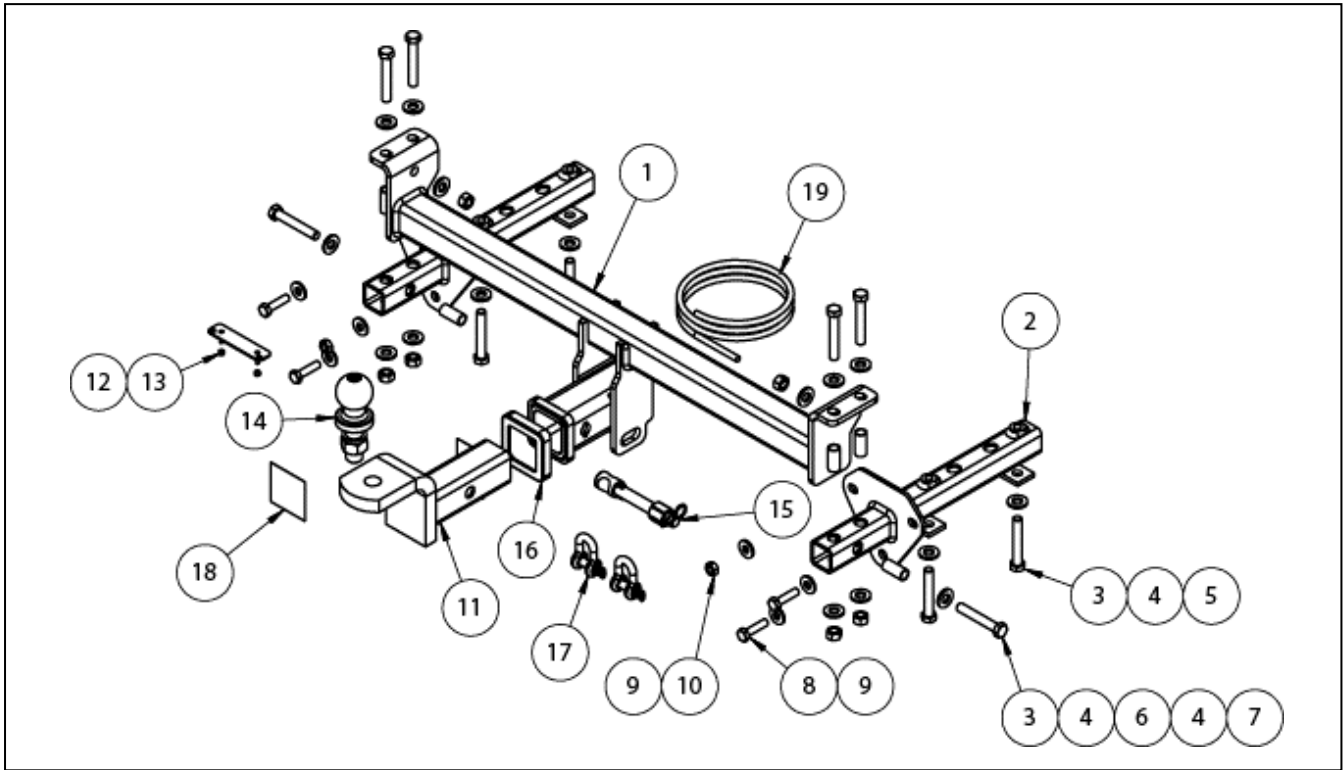
Hitch Pull Pins and spring "R" clips are regularly checked for proper installation. Replace any worn or defective parts.

Cequent Customer Service
Ph: 1800 812 017 Fax: 03 9898 3299
Email: info@cequent.com.au
Post: PO Box 4050, Dandenong South VIC 3175

TRAILBOSS

Towbar Fitting Instructions
 To Suit **QTSB319L**
 Part Number **SUBARU LEVORG V1 CL4**
 Rating **1200/120 kg**

PLACE THESE INSTRUCTIONS IN THE VEHICLE'S GLOVEBOX AFTER INSTALLATION IS COMPLETED



ITEM	DESCRIPTION	QTY
1	WELDED TOWBAR ASSEMBLY	1
2	SIDEARM	2
3	BOLT M12-1.25x75	10
4	WASHER FLAT 1/2"x1 1/8"x1/8"	16
5	LOOSE PLATE 32x32x6	4
6	SPACER TUBE CHS16.6ODx1.6x35MM	6
7	HEX NUT PC8 M12x1.25	6
8	SET SCREW M10x1.25x40	4
9	WASHER FT M10x25.4x3	6
10	NUT HX M10-1.25 Z/P	2

ITEM	DESCRIPTION	QTY
11	CLASS 4 TBM	1
12	PLUG BRACKET	1
13	NUT NYLOC M4-0.7 Z/P	2
14	TOWBALL 50MM	1
15	SILENT HITCH PIN – SILVER	1
16	HITCH BOX COLLAR COVER	1
17	"D" SHACKLE 10MM	2
18	ACYLIC COMPLIANCE PLATE	1
19	WIRING LOOM	1

Cequent Customer Service
 Ph: 1800 812 017 Fax: 03 9898 3299
 Email: info@cequent.com.au
 Post: PO Box 4050, Dandenong South VIC 3175

TRAILBOSS

Towbar Fitting Instructions
To Suit **QTSB319L**
Part Number **SUBARU LEVORG V1 CL4**
Rating **1200/120 kg**

PLACE THESE INSTRUCTIONS IN THE VEHICLE'S GLOVEBOX AFTER INSTALLATION IS COMPLETED

1. Release the tailgate to expose the boot cabin. Remove the 2 x screws and then remove the taillight assembly making sure to disconnect the wiring harness.

Repeat for opposite side of vehicle.



2. Remove the 1 x push rivet in the rear wheel arch.

Repeat for opposite side of vehicle.



3. Pull out the 10 x pull rivets from the bottom of the bumper bar.



Cequent Customer Service

Ph: 1800 812 017 Fax: 03 9898 3299

Email: info@cequent.com.au

Post: PO Box 4050, Dandenong South VIC 3175

TRAILBOSS

Towbar Fitting Instructions
To Suit **QTSB319L**
Part Number **SUBARU LEVORG V1 CL4**
Rating **1200/120 kg**

PLACE THESE INSTRUCTIONS IN THE VEHICLE'S GLOVEBOX AFTER INSTALLATION IS COMPLETED

4. Carefully peel away bumper from the vehicle, remove and disconnect the wiring harnesses (where applicable).



5. Remove the 2 x screws and 1 x nut holding the impact beam in place.

Repeat for the opposite side of vehicle.

Remove and discard the impact beam and fasteners.



6. Remove 2 x pull rivets to improve access for lowering the exhaust system.

Repeat for opposite side of vehicle.



Cequent Customer Service
Ph: 1800 812 017 Fax: 03 9898 3299
Email: info@cequent.com.au
Post: PO Box 4050, Dandenong South VIC 3175

TRAILBOSS

Towbar Fitting Instructions
To Suit **QTSB319L**
Part Number **SUBARU LEVORG V1 CL4**
Rating **1200/120 kg**

PLACE THESE INSTRUCTIONS IN THE VEHICLE'S GLOVEBOX AFTER INSTALLATION IS COMPLETED

7. Temporarily secure the exhaust system to prevent it suddenly dropping



8. Remove the exhaust muffler off the 2 x rubber hangers.

Repeat for opposite side of vehicle.



9. Remove exhaust from the rubber hanger in the centre of the vehicle.

Note: picture shown with exhaust in the lowered position



Cequent Customer Service
Ph: 1800 812 017 Fax: 03 9898 3299
Email: info@cequent.com.au
Post: PO Box 4050, Dandenong South VIC 3175

Towbar Fitting Instructions
To Suit **QTSB319L**
Part Number **SUBARU LEVORG V1 CL4**
Rating **1200/120 kg**

PLACE THESE INSTRUCTIONS IN THE VEHICLE'S GLOVEBOX AFTER INSTALLATION IS COMPLETED

10. Remove 4 x nuts and then the exhaust shield from vehicle.

Repeat for opposite side of vehicle.



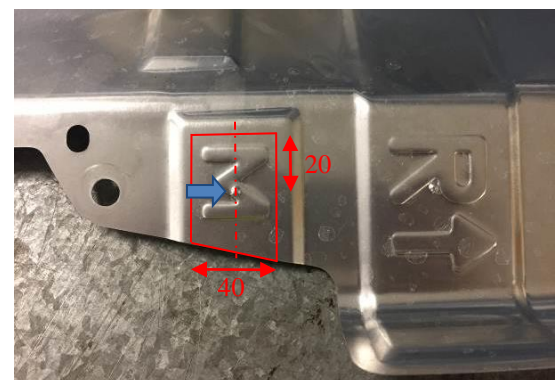
11. Remove and discard the 2 x rubber grommets on the underside of the chassis rail.

Repeat for opposite side of vehicle.



12. From the heat shield removed in step 10 locate the pressed metal dot in the "M" and cut out a 40 mm wide slot centered about the dot.

Note this will allow clearance for the spacer plate installed in step 18.



Cequent Customer Service
Ph: 1800 812 017 Fax: 03 9898 3299
Email: info@cequent.com.au
Post: PO Box 4050, Dandenong South VIC 3175

TRAILBOSS

Towbar Fitting Instructions
To Suit **QTSB319L**
Part Number **SUBARU LEVORG V1 CL4**
Rating **1200/120 kg**

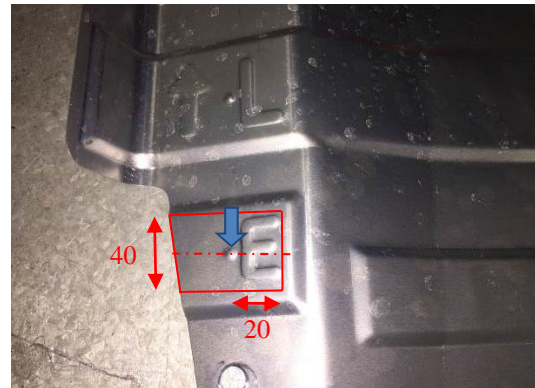
PLACE THESE INSTRUCTIONS IN THE VEHICLE'S GLOVEBOX AFTER INSTALLATION IS COMPLETED

13. Picture on the right shows what the cut out should look like when complete. Deburr all sharp edges.



14. From the other heat shield removed in step 10 locate the pressed metal dot in the "E" and cut out a 40 mm wide slot centered about the dot.

Note this will allow clearance for the spacer plate installed in step 18.



15. Picture on the right shows what the cut out should look like when complete. Deburr all sharp edges.

Reverse step 10 to reinstall both heat shields.



Cequent Customer Service
Ph: 1800 812 017 Fax: 03 9898 3299
Email: info@cequent.com.au
Post: PO Box 4050, Dandenong South VIC 3175

TRAILBOSS

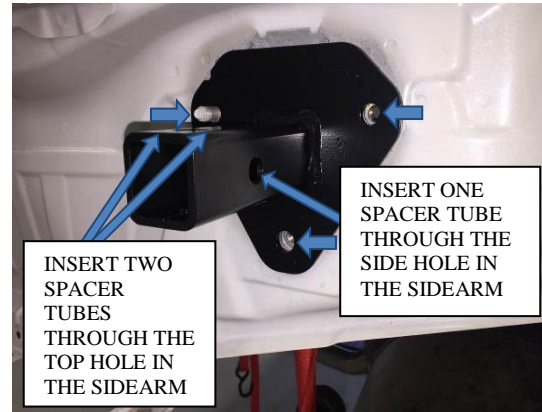
Towbar Fitting Instructions
To Suit **QTSB319L**
Part Number **SUBARU LEVORG V1 CL4**
Rating **1200/120 kg**

PLACE THESE INSTRUCTIONS IN THE VEHICLE'S GLOVEBOX AFTER INSTALLATION IS COMPLETED

16. Insert sidearm into chassis rail. Loosely secure to back panel using 2 x M10 x 40 screws and 1 x M10 nut complete with 1 x M10 flat washer per screw / nut

17. Insert 2 x spacer tubes into the holes in the top of the sidearm and 1 x spacer tube into the hole in the RHS of the sidearm.

Repeat steps 16 and 17 for opposite side of vehicle.



18. Loosely secure sidearm to underside of chassis rail using 2 x M12 x 75 bolts complete with 1 x 32 mm square spacer plate and 1 x M12 flat washer per bolt.

Repeat for opposite side of vehicle.



19. Offer towbar assembly onto sidearms and loosely secure using 3 x M12 x 75 bolts each complete with 1 x spacer tube (installed in step 17), 2 x M12 flat washers and 1 x M12 nut per bolt.

Repeat for opposite side of vehicle.



Cequent Customer Service
Ph: 1800 812 017 Fax: 03 9898 3299
Email: info@cequent.com.au
Post: PO Box 4050, Dandenong South VIC 3175

Towbar Fitting Instructions
To Suit **QTSB319L**
Part Number **SUBARU LEVORG V1 CL4**
Rating **1200/120 kg**

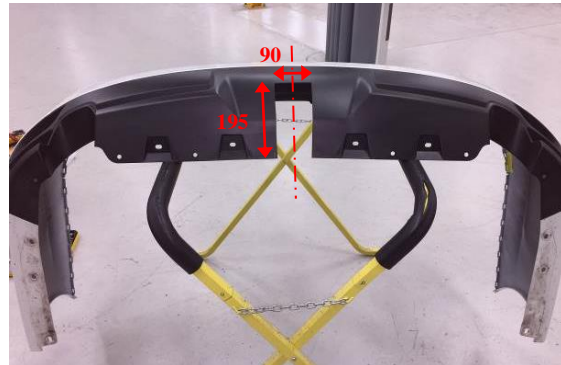
PLACE THESE INSTRUCTIONS IN THE VEHICLE'S GLOVEBOX AFTER INSTALLATION IS COMPLETED

20. Torque all fasteners to the specifications listed below:

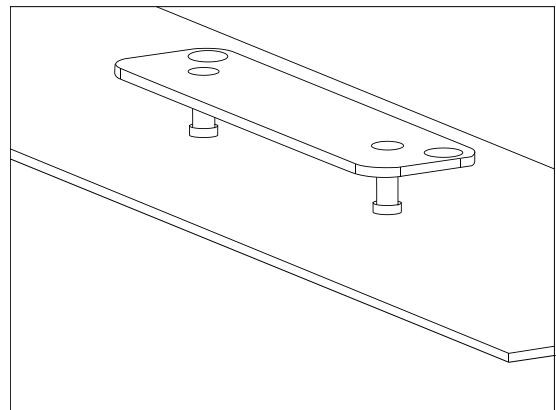
M10 Screws: 48Nm
M12 Bolts: 89Nm



21. Identify the centreline of the bumper and create a cut 90mm wide x 195mm tall, as measured on the outside of the bumper



22. Mark out and drill 2 x $\varnothing 5$ mm holes 69mm apart on bumper skin to support plug bracket. Feed bracket threads through drilled holes prior to reinstalling bumper.



Cequent Customer Service
Ph: 1800 812 017 Fax: 03 9898 3299
Email: info@cequent.com.au
Post: PO Box 4050, Dandenong South VIC 3175

TRAILBOSS

Towbar Fitting Instructions
To Suit **QTSB319L**
Part Number **SUBARU LEVORG V1 CL4**
Rating **1200/120 kg**

PLACE THESE INSTRUCTIONS IN THE VEHICLE'S GLOVEBOX AFTER INSTALLATION IS COMPLETED

23. Reinstall bumper following steps 1-4 and 6-9
in reverse order.



Cequent Customer Service
Ph: 1800 812 017 Fax: 03 9898 3299
Email: info@cequent.com.au
Post: PO Box 4050, Dandenong South VIC 3175



Wiring Loom Fitting Instructions
To Suit Subaru Levorg MY16
Part Number: 101543-WL

Wiring Loom Installation Instructions

Subaru Levorg MY16
Part No: 101543-WL

Tail Length Required: 1800mm

Wiring Loom Installation Time: Approx 25 Mins



Important

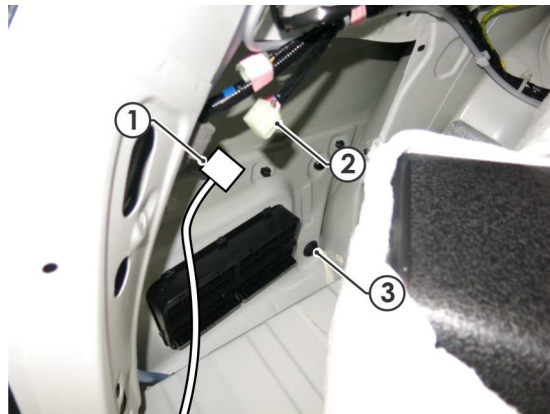
Due to possible vehicle variations, always confirm any noted vehicle colour wires with a multi-meter to ensure the correct function is identified before soldering or scotch locking. For vehicle wires denoted with two colours (example: RED/GREEN) the first colour will always be the main wire colour while the second colour is the thinner trace colour on the wire.

Wiring Loom Fitting Instructions To Suit Subaru Levorg MY16 Part Number: 101543-WL

1. In the luggage compartment, remove the floor mat.
2. Remove the two middle luggage compartment floor trims and fold down the rear seats.
3. Remove the two side luggage compartment floor trims.
4. Remove the middle and two side tool trays.
5. Remove the luggage compartment inner middle and rear trim.
6. Remove the two luggage hooks on the LHS trim.
7. Remove the screws (1)(2) from behind the plastic luggage hook and the sunshade trim before dislodging the LHS trim (3).



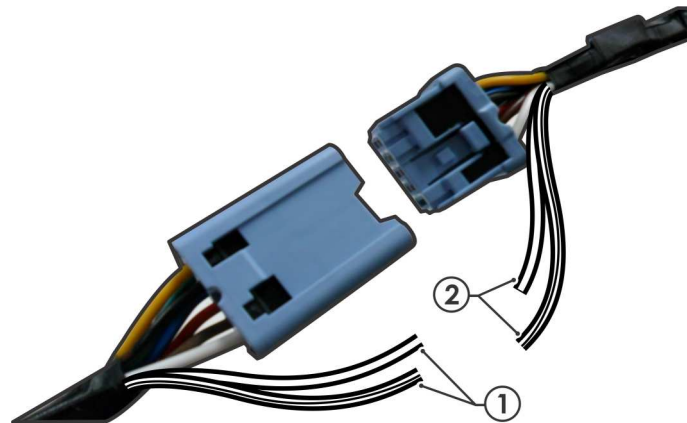
8. Inside the luggage compartment LHS area, patch the trailer patch (P/No: 101543-WL) 10-way connector (1) to the vehicle breakout 10-way connector (2). Remove the vehicle grommet (3).



9. At the rear exterior of the vehicle, mount the tail harness socket to the towbar mounting bracket using M4 fasteners (not supplied).

Wiring Loom Fitting Instructions To Suit Subaru Levorg MY16 Part Number: 101543-WL

10. Route the tail harness (tail length: 1800mm) across the LHS and up into the previously removed grommet hole. Adjust the trailer patch harness grommet so that it is seated correctly and cable tie (not supplied) in place.
11. Connect the tail harness 8-way connector to the trailer patch 8-way mating connector.
12. To enable ISS cut-off, crimp the tail harness GREY and GREY/BLACK wires (1) to the trailer patch matching GREY and GREY/BLACK wires (2).



13. Test the trailer patch function using a light board or multi-meter.
14. Secure all harnesses using cable ties (not supplied).
15. Re-fit all removed parts and secure all fasteners, ensuring there are no squeaks or rattles.
16. Place the fitting instructions in the glove box after fitment.



FITTING INSTRUCTIONS

Silent Anti-Rattle Hitch Pin (PR0001)

• These fitting instructions are supplied to ensure understanding of how the HITCH PIN should be fitted and used correctly.

• Once installed, we recommend **ALL** instructions are kept and placed in the vehicle glove box.

NOTE: Routine maintenance and inspection of the towbar & HITCH PIN is required. Regularly inspect for wear and check the tightness of the Hitch Pin. Follow instructions below to retighten the nut when necessary.

***Do not tow with your vehicle if the R CLIP or the HITCH PIN is loose or missing. Replacement parts are available from your Pro Series Distributor.**

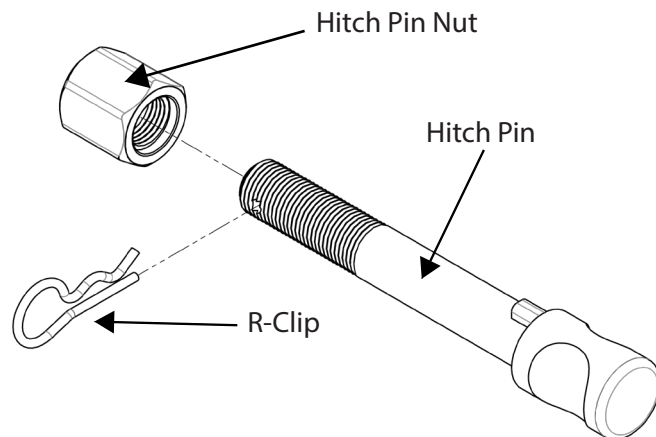


Fig 1. Silent Anti-Rattle Hitch Pin assembly

STEP 1

Insert Trailer Ball Mount (TBM) into towbar HITCHBOX, aligning hole in TBM SHANK with hole in HITCHBOX (Fig 2).

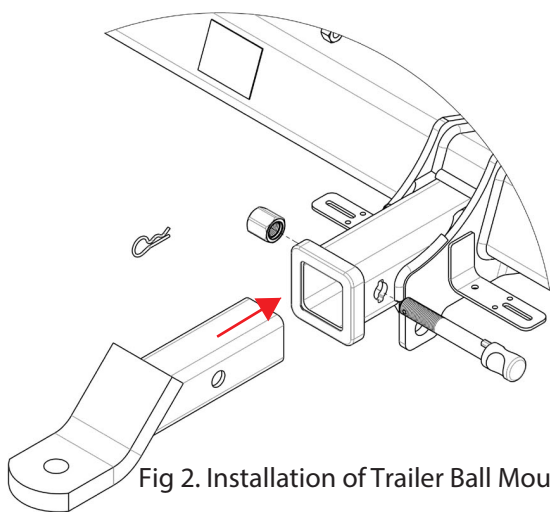


Fig 2. Installation of Trailer Ball Mount

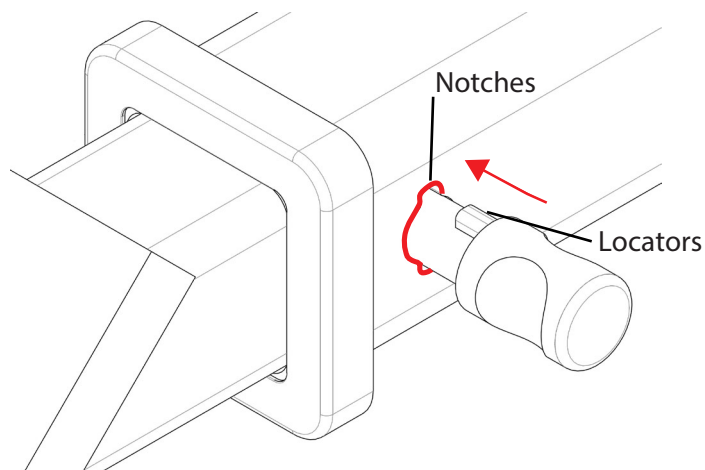


Fig 3. Silent Anti-Rattle Hitch Pin orientation

STEP 2

Insert HITCH PIN through hole in HITCHBOX and hole in TBM SHANK; ensure the LOCATORS are inserted into the NOTCHES in the HITCHBOX (Fig. 3).

STEP 3

Screw HITCH PIN NUT onto HITCH PIN ; tighten HITCH PIN NUT until finger tight, ensuring TBM is restrained from movement.

STEP 4

Tighten HITCH PIN NUT by turning nut a further 1/8th of a turn in the clockwise direction using a 24mm spanner (Fig. 4).

STEP 5

Install HITCH PIN R CLIP through the hole on the HITCH PIN (Fig. 1).

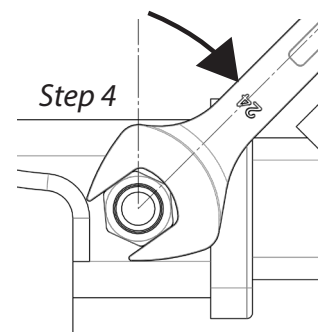


Fig 4. Tightening of Silent Anti-Rattle Hitch Pin Nut