

# TRAILBOSS

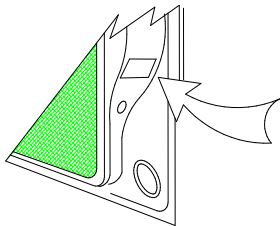
## Towbar Fitting Instructions To Suit Ssangyong Korando C200 Part Number QTSY301L Rating 2000 kg

### **WARNING:**

1. Do not, drill, cut, weld or otherwise modify the tow bar.
2. If you are using electric welding on a motor vehicle, **always** check that the vehicle is not equipped with electronic engine or instrument management equipment. Failure to do so could **destroy** any onboard computers. If in doubt, check with the vehicle's manufacturer.

### **General:**

1. Ensure all hardware items have been included
2. It is recommended that the instructions are read through and completely understood before making any attempt to fit this product.
3. Be wary of any changes to vehicle designs or other accessories that may conflict with the installation of this product.
4. Before drilling ensure that the area is clear of fuel, electrical & other components.
5. All holes drilled into the body panels shall have all burrs & swarf removed then coated with a suitable rust preventative paint.
6. The high tensile fasteners supplied with this product were used to achieve the specified rating. If replacement is required ensure that fasteners of the same rating & quality are used. Contact an authorized **Trailboss** dealer if further information is required.
7. Ensure that all hardware is fastened to torque list below check fasteners on regular basis.
8. Tow bar load rating sticker provided with this product shall be conspicuously located on inside rear end of the driver's door. **(See diagram below).**
9. Trailboss recommends that you check your tow ball to ensure that it complies with the Australian standards **AS 4177.2**.
10. **PLEASE NOTE:** It is advised to remove your lug or tbn when not actually towing so as to produce a clear view of the vehicles registration plate if obscured, and to also provide maximum available departure angle



Place load rating sticker  
inside driver's door here

### **FOR TOWING PURPOSES ONLY**

For towing capacity details please refer to vehicle owner's manual or to the manufacturer. Overloading can void your warranties.

### **RECOMMENDED ASSEMBLY TORQUE LISTING**

Diameter    Grade 8.8 Bolt

M6	9.5 Nm
M8	21.7 Nm
M10	43.4 Nm
M12	77.3 Nm
M16	189.8 Nm

### **Tow bar Maintenance and Care.**

Trailboss recommends that bolt torque's, as listed below, are routinely and regularly inspected and checked for correct tension. Replace any worn or defective parts.

We recommended to remove Tow Ball Mounts (TBM's, tongues or lugs) when not being used for any considerable length of time.

So as to avoid injury, when not towing it is suggested that the tongue, Pull Pin and R-clip are removed then stored in a safe, clean and dry place, away from excessive moisture.

Hitch Pull Pins and spring "R" clips are regularly checked for proper installation. Replace any worn or defective parts.



Towbar Fitting Instructions  
To Suit Ssangyong Korando C200  
Part Number QTSY301L  
Rating 2000 kg

**11. Remove tail lights:**

- a) Remove 2 screws from each side of the vehicle.
- b) Slide the tail lights towards the rear of the vehicle.
- c) Pull the rubber wiring boot out from the body of the vehicle and then disconnect the wiring plug.

**12. Remove the rear bumper: NOTE: RETAIN ALL FASTENERS.**

- a) Remove the 2 scrivets and 1 screw per side from exposed region.
- b) Remove 3 screws and 2 scrivets per side from inside the wheel arch and from under the rear bumper.
- c) Remove 2 bolts & 3 nuts from the lower infill panel on the underside of the rear bumper which exposes another bolt. Remove this bolt which is the last one.
- d) Remove the rear bumper.
- e) Remove and discard the bumper foam via 3 clips.

**13. Remove the rear intrusion bar:**

- a) Remove 2 bolts and 1 nut per side & Discard the rear intrusion bar.
- b) Remove the exhaust from 3 rubber hangers and let it hang loose.

**14. Remove and trim heat shielding:**

- a) Remove 6 nuts from heat shielding and temporarily remove from the vehicle.
- b) Refer to cutting template 1a and 1b for heat shielding trimming instructions located at the end of these instructions .
- c) Set aside trimmed heat shielding

**15. Remove tow hook and body deadener:**

- a) On the right hand side of the vehicle, cut off the tow hook so as it sits flush or above from the bottom surface of the chassis rail.
- b) Remove body deadening from the chassis rail surface from each side.
- c) Re-attach the heat shielding to the vehicle using the 6 nuts previously removed.

**16. Rear panel cut out:**

- a) Locate the top stud and 2 bolt holes on the left and right sides of the vehicles rear panel.
- b) Referring to cutting template 2, cut out a rectangle in the rear panel of the vehicle on each side. The template2 is located at the end of these instruction.

Towbar Fitting Instructions  
To Suit Ssangyong Korando C200  
Part Number QTSY301L  
Rating 2000 kg

**17. Lower infill panel cut out:**

- Referring to the image below, cut out a rectangle, using the ribs on the panel as a guide, in the lower infill panel as shown in Fig 1.
- Re-install the lower infill panel back onto the vehicle by attaching the 3 nuts

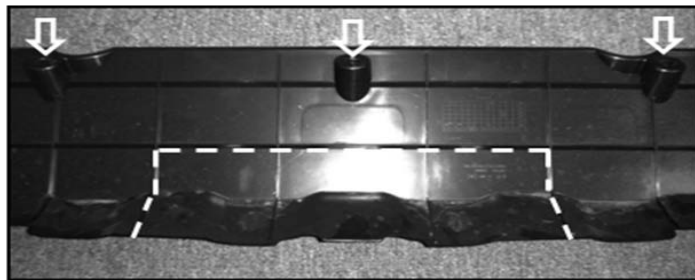


Fig 1

**18. Attach Left and Right side arm assembly:**

- Insert items 3 & 4 into the left and right rear panel cut outs respectively.
- Using items 10 & 11, loosely hand tighten the forward most fastening position from the underside of the chassis rail.

**NOTE (left hand side only):** If necessary, loosen bolt fastening fuel filler bracket and refasten at further most limit from tow bar mount hole.

**19. Attach Left and Right mount bracket:**

- Using item 5, on the left hand side of the vehicle, install the bracket on the underside of the chassis rail.
- Using 3 sets of items 10 & 11, loosely hand tighten the fasteners through item 5 (left mount bracket), to item 3 (left side arm assembly) as shown in Assembly drawing, attach at the end of these instruction.
- Repeat this using 3 sets of items 10 and 11 for items 6 and 4 on the right hand side of the vehicle.

**20. Attach Tow bar:**

- Slide item 1, up to the left and right side arms (items 3 & 4), and using items 10,12 & 2 sets of 11 loosely fasten the 6 bolt hole locations per side.
- Torque all fastening attachment points (10 bolts per side), to 49 Nm.
- Re-fit the exhaust securely to its rubber hangers.

**21. Trim Bumper & fasten points:**

- Remove the centre bumper tab from the bumper.
- Trim the outer 2 bumper tabs by 10mm.
- Attach the u-nut, (item 14), to each of the 2 tabs.



Towbar Fitting Instructions  
To Suit Ssangyong Korando C200  
Part Number QTSY301L  
Rating 2000 kg

**22. Bumper cut out:**

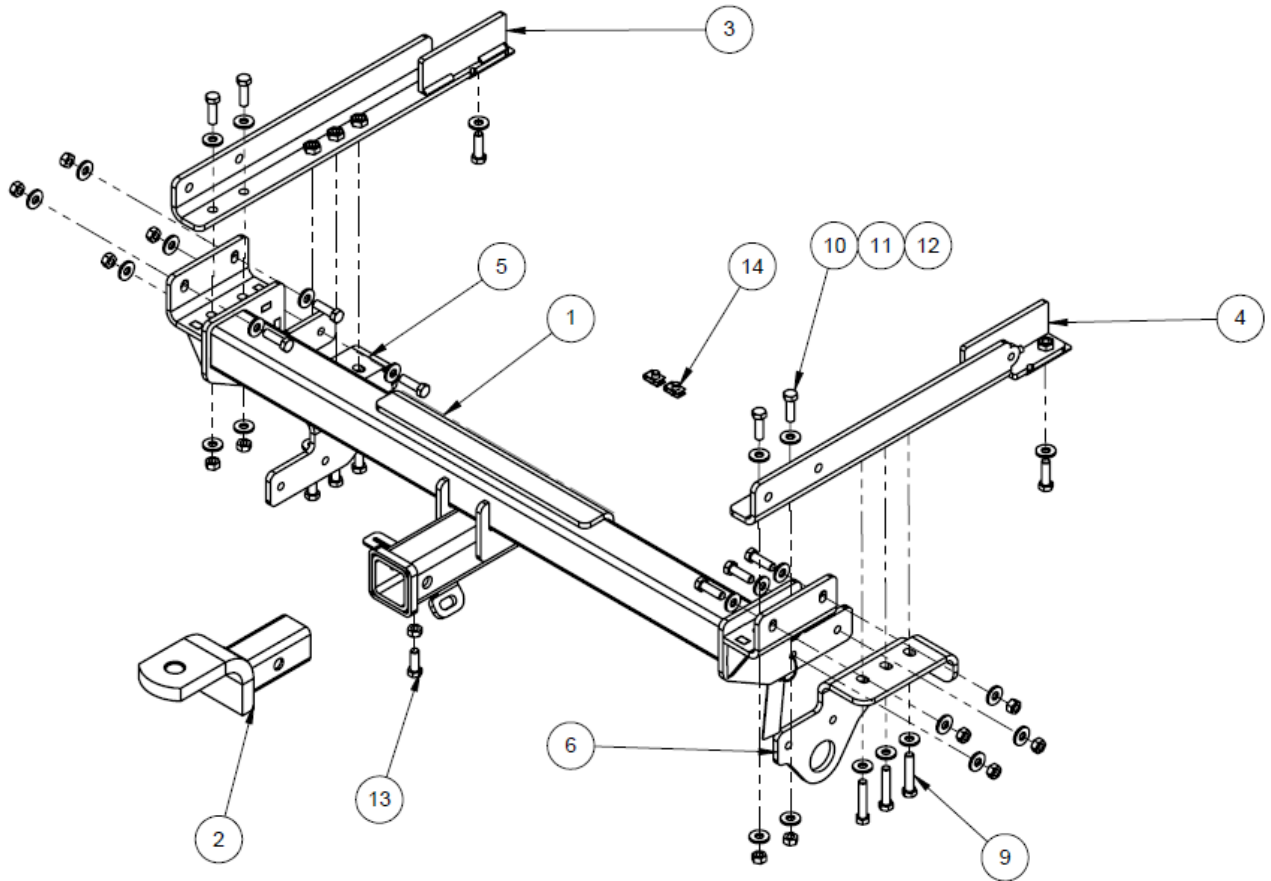
- a) Refer to cutting template 3 for bumper cut out instructions which located at the end of these instructions.

**23. Re-attaching all vehicle components:**

- a) Re-attach the rear bumper and tail lights by reversing the steps earlier in these instructions.

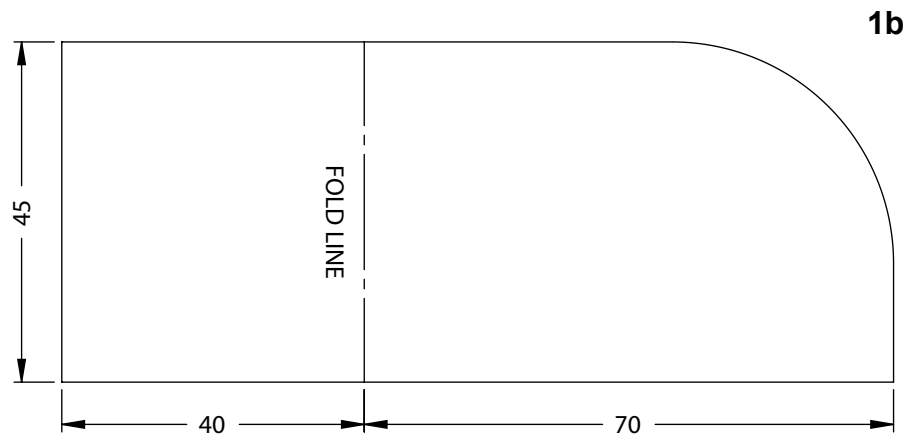
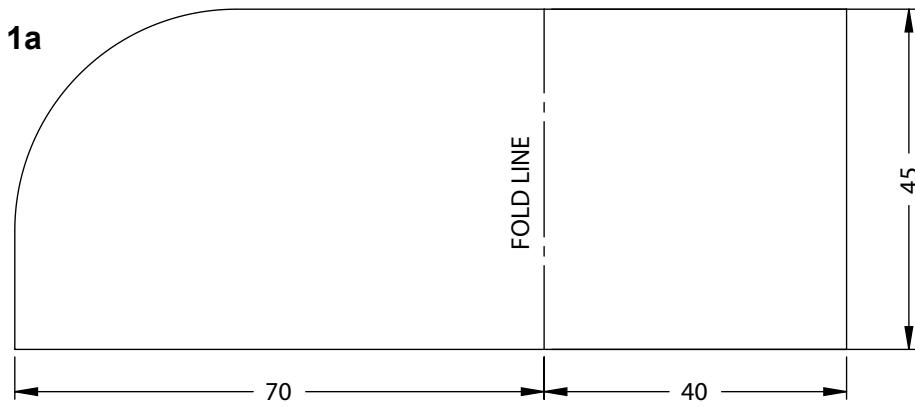
**NOTE: Make sure to re-install 2 of the 3 bolts removed in step 2 of these instructions. These fasten the lower infill panel to the rear bumper via the u-nuts (item 14).**

Towbar Fitting Instructions  
 To Suit Ssangyong Korando C200  
 Part Number QTSY301L  
 Rating 2000 kg



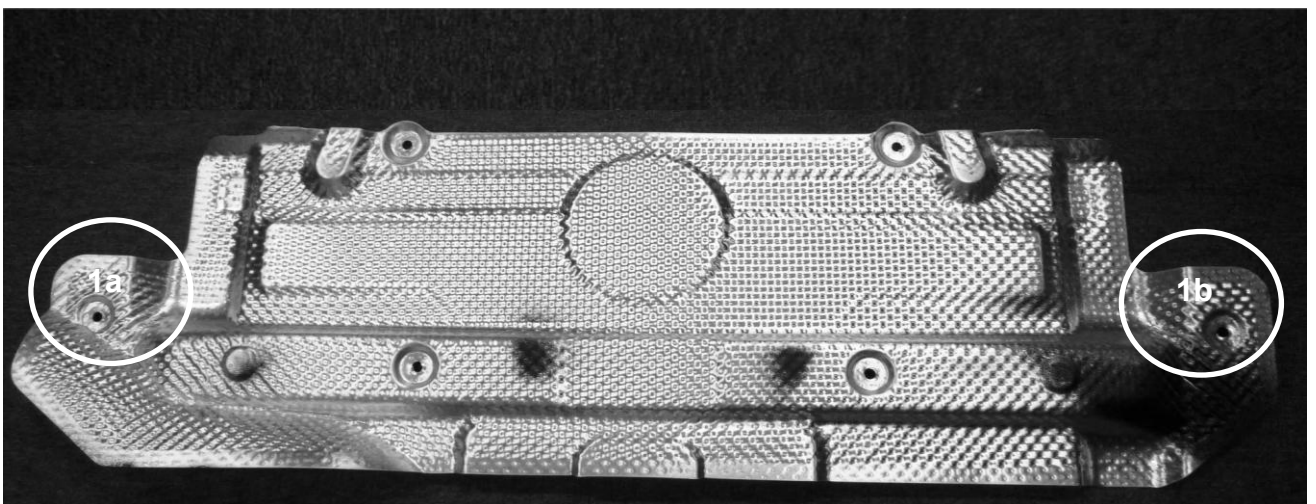
QTY.	DESCRIPTION	ITEM NO.
1	TOWBAR KORANDO	1
1	TBM	2
1	Left Side Arm Assy.	3
1	Right Side Arm Assy.	4
1	LEFT MOUNT BRACKET	5
1	RIGHT MOUNT BRACKET	6
6	BOLT M10 - 1.5 x 55mm	7
14	M10 - 1.5 x 35mm BOLT	8
32	WSHR FT M10 X 25.4 X 3	9
13	M10x1.5 HEX NUT PC8	10
1	M10 - 1.5 x 30mm BOLT	11
2	M6 U-NUT INSERT	12

## CUTTING TEMPLATE 1a & 1b.



### IMPORTANT INFORMATION

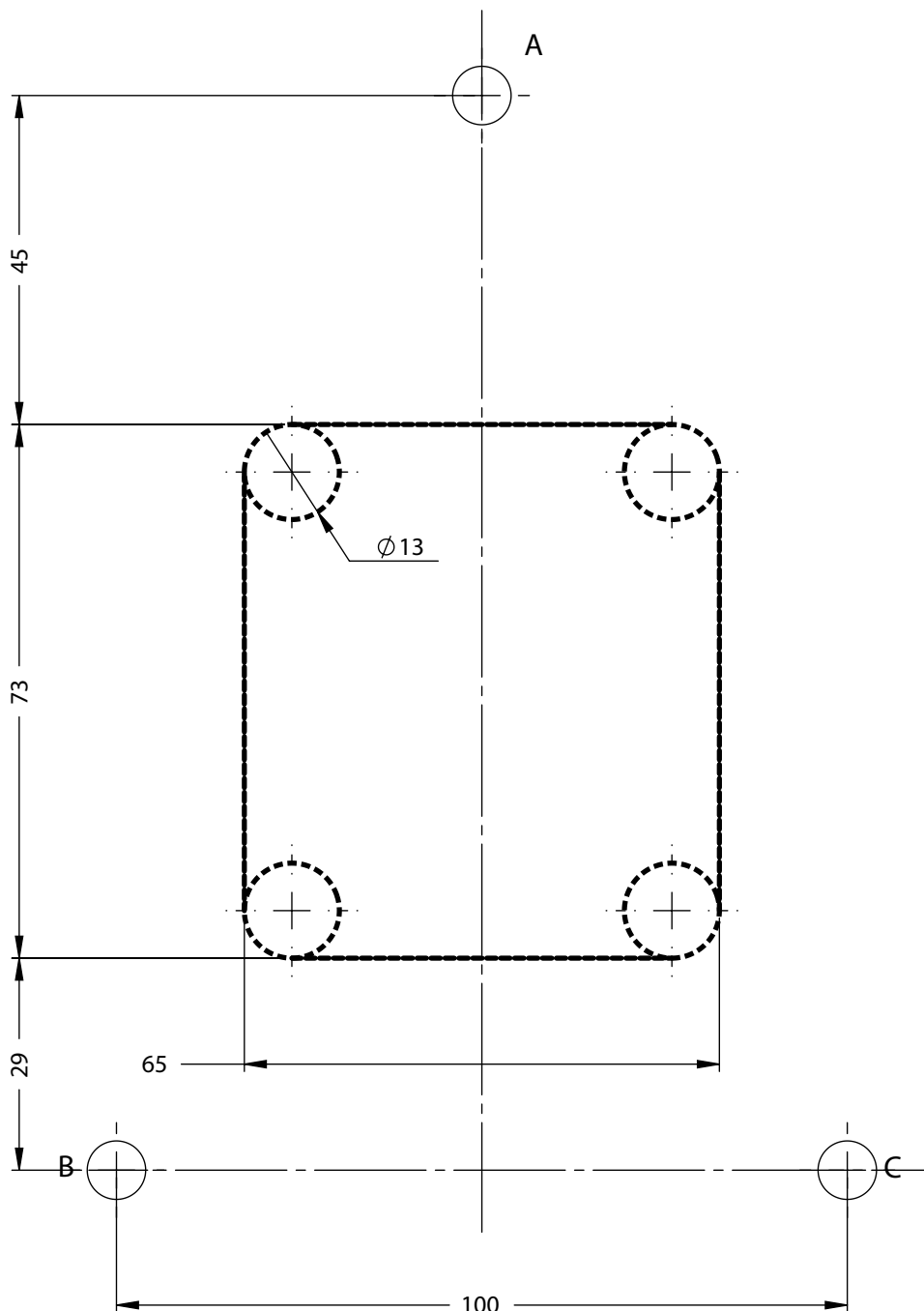
1. ENSURE ALL DIMENSIONS ARE TO SCALE BEFORE PROCEEDING.
2. POSITION THE TEMPLATES ON THE HEAT SHIELD IN THE LOCATIONS OUTLINED IN THE IMAGE BELOW.
3. ENSURE THE RADIUS ON THE TEMPLATE ALIGNS WITH THE RADIUS ON THE HEAT SHIELD.
4. MARK AROUND THE OUTSIDE EDGE OF THE TEMPLATE.
5. USING SHARP SCISSORS, CUT OUT THE MATERIAL AS MARKED.
6. FILE ANY ROUGH EDGES.



## CUTTING TEMPLATE 2.

### IMPORTANT INFORMATION

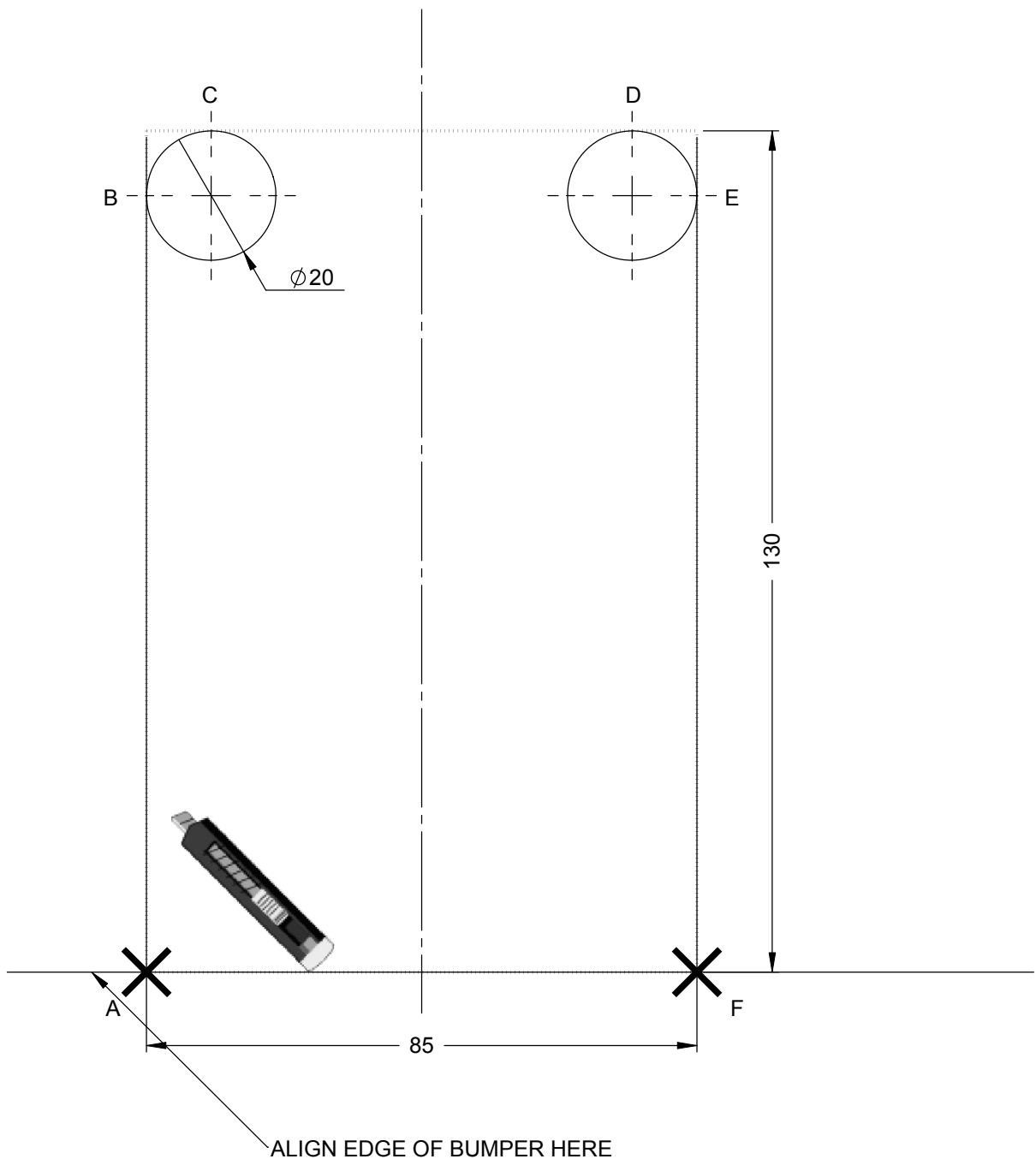
1. ENSURE ALL DIMENSIONS ARE TO SCALE BEFORE PROCEEDING.
2. POSITION THE TEMPLATE ON THE BACK PANEL ENSURING THE TOP STUD AND BOTTOM 2 HOLES ON THE VEHICLE ARE ALIGNED WITH HOLES MARKED A, B & C ON THE TEMPLATE.
3. MARK THE CENTRES OF THE 4x13mm DIAMETRE HOLES AND REMOVE THE TEMPLATE.
4. DRILL OUT THE 4 HOLES TO 13mm.
5. MARK OUT A RECTANGLE USING TANGENT LINES TO THE 4 DRILLED HOLES (SEE DASHED LINE ON TEMPLATE).
6. USE A SAW TO CUT OUT THE RECTANGLE AND DISCARD MATERIAL.
7. FILE ANY ROUGH EDGES.
8. APPLY ANTI RUST GREASE ON ALL WORKED SURFACES.



## CUTTING TEMPLATE 3.

### IMPORTANT INFORMATION

1. ENSURE ALL DIMENSIONS ARE TO SCALE BEFORE PROCEEDING.
2. MARK THE CENTRELINE ON THE REAR BUMPER.
3. POSITION TEMPLATE ON THE OUTSIDE OF THE REAR BUMPER (PAINTED SURFACE), ALIGNING THE TEMPLATE CENTRELINE WITH THE CENTERLINE OF THE REAR BUMPER.
4. ALIGN 'EDGE OF BUMPER' ON TEMPLATE WITH THE LOWEST EDGE ON THE REAR BUMPER.
5. MARK CENTRE OF  $\phi 20$  HOLE AND EDGES OF BUMPER.
6. CUT 2x  $\phi 20$  HOLES USING A  $\phi 20$  HOLE SAW.
7. MARK INSIDE OF BUMPER COVER FROM EDGE OF BUMPER TO TANGENT OF  $\phi 20$  HOLES (A TO B, E TO F, AND C TO D).
8. USE A SHARP KNIFE TO CUT ALONG LINES MARKED.
9. FILE ANY ROUGH EDGES AND APPLY BUMPER TRIM PINCH WELD (ITEM 17) TO THE CUT EDGE.







Wiring Loom Fitting Instructions  
To Suit Ssangyong C200 Korando  
Part Number 100654-WL

**Wiring Loom Installation Instructions**

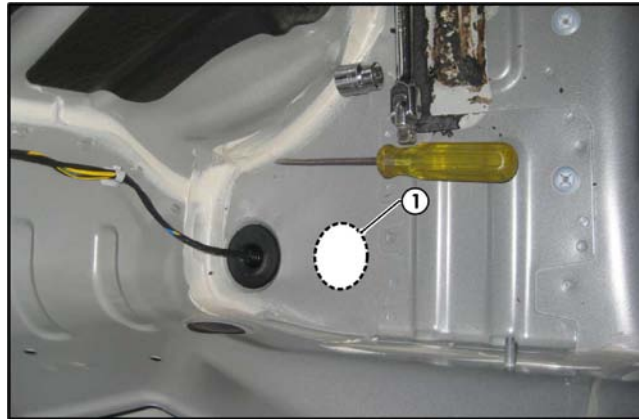
**Ssangyong C200 Korando  
Part No: 100654-WL**

**Tail Harness Length Required: 1200mm  
RPA Override Switch Part No: 04848 (If Fitted)**

**Wiring Loom Installation Time: Approx 60 Mins**

## Wiring Loom Fitting Instructions To Suit Ssangyong C200 Korando Part Number 100654-WL

1. In the luggage compartment, remove the floor cover carpet and fold the rear seats forward.
2. Remove the luggage compartment rear trim.
3. Remove the LHS and RHS storage compartments.
4. Remove the LHS luggage compartment trim by first removing any clips or fasteners.
5. Dislodge the RHS luggage compartment trim by first removing any clips or fasteners.
6. Disconnect the 12v accessory connector.
7. Drill a Ø31mm hole (1) in the vehicle sheet metal on the LHS of the luggage compartment, as shown below.



8. File any rough or sharp edges and spray on rust inhibitor.
9. Locate and disconnect the LHS tail light connector.
10. Connect the Trailer Harness mating connectors in between the LHS tail connector and the LHS tail light assembly.
11. Connect the Trailer Harness ground ring terminal to the vehicle earth point.
12. Route the Trailer Harness (P/No: 100654-WL) along the rear of the luggage compartment and up towards the RHS tail light connectors.
13. Locate and disconnect the LHS tail light connector.
14. Connect the Trailer Harness mating connectors in between the LHS tail light connector and the LHS tail light assembly.



Wiring Loom Fitting Instructions  
To Suit Ssangyong C200 Korando  
Part Number 100654-WL

15. Mount the trailer socket to the towbar mounting bracket using M4 fasteners (not supplied).
16. Route the Tail Harness (tail length 1200mm) across the towbar towards the LHS of the vehicle and up through the previously drilled out hole.
17. Ensure the Tail Harness grommet is seated correctly and secure in place using a cable tie (not supplied).
18. In the luggage compartment, connect the Tail Harness 8-way connector to the Trailer Harness mating 8-way connector.
19. Test the Trailer Harness function using a Light Board or multi-meter.
20. Secure all Harnesses using cables ties (not supplied).
21. Re-fit all removed parts and secure all fasteners, ensuring there are no squeaks or rattles.
22. Place the instructions in the glove box after fitment.