

# TRAILBOSS

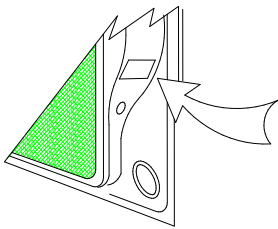
## Towbar Fitting Instructions To Suit **VOLVO V50 2009** on Part Number **QTRVO002L** Rating 1500 kg

### **WARNING:**

1. Do not, drill, cut, weld or otherwise modify the tow bar.
2. If you are using electric welding on a motor vehicle, **always** check that the vehicle is not equipped with electronic engine or instrument management equipment. Failure to do so could **destroy** any onboard computers. If in doubt, check with the vehicle's manufacturer.

### **General:**

1. Ensure all hardware items have been included refer to assembly diagram.
2. It is recommended that the instructions are read through and completely understood before making any attempt to fit this product.
3. Be wary of any changes to vehicle designs or other accessories that may conflict with the installation of this product.
4. Before drilling ensure that the area is clear of fuel, electrical & other components.
5. All holes drilled into the body panels shall have all burrs & swarf removed then coated with a suitable rust preventative paint.
6. For vehicles that require the bumper to be cut. Ensure cut out area is in correct position on the vehicle prior to cutting the bumper.
7. The high tensile fasteners supplied with this product were used to achieve the specified rating. If replacement is required ensure that fasteners of the same rating & quality are used. Contact an authorized **Trailboss** dealer if further information is required.
8. Ensure that all hardware is fastened to torque list below check fasteners on regular basis.
9. Tow bar load rating sticker provided with this product shall be conspicuously located on inside rear end of the driver's door. **(See diagram below)**.
10. Trailboss recommends that you check your tow ball to ensure that it complies with the Australian standards **AS 4177.2**.
11. **PLEASE NOTE:** It is advised to remove your lug or tbn when not actually towing so as to produce a clear view of the vehicles registration plate if obscured, and to also provide maximum available departure angle



Place load rating sticker  
inside driver's door here

### **FOR TOWING PURPOSES ONLY**

For towing capacity details please refer to vehicle owner's manual or to the manufacturer. Overloading can void your warranties.

### **RECOMMENDED ASSEMBLY TORQUE LISTING**

Diameter Grade 8.8 Bolt

M6	9.5 Nm
M8	21.7 Nm
M10	43.4 Nm
M12	77.3Nm
M14	146 Nm
M16	189.8 Nm

### **Tow bar Maintenance and Care.**

Trailboss recommends that bolt torque's, as listed below, are routinely and regularly inspected and checked for correct tension. Replace any worn or defective parts.

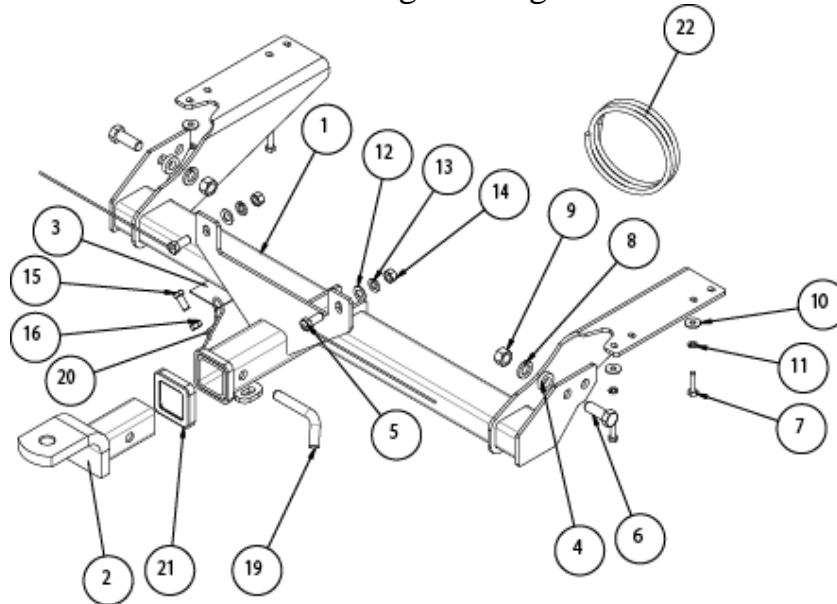
We recommended to remove Tow Ball Mounts (TBM's, tongues or lugs) when not being used for any considerable length of time.

So as to avoid injury, when not towing it is suggested that the tongue, Pull Pin and R-clip are removed then stored in a safe, clean and dry place, away from excessive moisture.

Hitch Pull Pins and spring "R" clips are regularly checked for proper installation. Replace any worn or defective parts.

# TRAILBOSS

Towbar Fitting Instructions  
 To Suit **VOLVO V50 2009** on  
 Part Number **QTRVO002L**  
 Rating 1500 kg



ITEMS 17 & 18 ARE NOT SHOWN IN THE DRAWING

Figure 1 – Layout Diagram

ITEM NO.	DESCRIPTION	QTY.
1	WELDED ASSEMBLY VOLVO S40/V50	1
2	TBM	1
3	ACRYLIC CP	1
4	WASHER	2
5	BOLT & WIRE M12 X 35 X 300	2
6	M16 x 45 2.0P BOLT	2
7	M8 X30 BOLT	4
8	M16 SPRING WASHER	2
9	M16 x 2.0P NUT	2
10	Wshr ft 5/16 x 7/8 x 16 z/p	4
11	M8 SPRING WASHER	4
12	Wshr ft 1/2" x 1-1/8" x 16 z/p	2
13	M12 SPRING WASHER	2
14	M12 x 1.75P NUT	2
15	M10 x 25 1.5P BOLT	1
16	NUT M10 x 1.5P	1
17	FITTING INSTRUCTIONS	1
18	LOAD RATING LABEL	1
19	PULL PIN	1
20	SPRING COTTER PIN	1
21	HITCH BOX COLLAR COVER	1
22	WIRING LOOM	1

Towbar Fitting Instructions  
To Suit **VOLVO V50 2009** on  
Part Number **QTRVO002L**  
Rating 1500 kg

## STEPS TO FIT TOWBAR



Position the vehicle on to a safe working height on the hoist before commencing fitment.

1. Remove lower plastic skirt from the bumper and make a cut.
2. Refer to Figure 1 for Bumper cut out illustrations for Sedan.
3. Refer to Figure 2 for Bumper cut out illustration for Wagon.
4. Remove rear most exhaust mounts from chassis on both sides, and let muffler hang.
5. Lift towbar into position so as forward most arms align with exhaust mount holes.
6. Fit M16x95 bolts loosely through shipping hooks.
7. Fit bolts on wires through large holes in impact beam and into rear dropper plate, fit nuts flat washers and spring washers loosely.
8. Tighten all bolts to torque listings, shown on page 1.
9. Refit the plastic skirt.
10. Affix the load rating label, as shown on page 1.



Figure 1 – Bumper cut out illustration for Sedan.

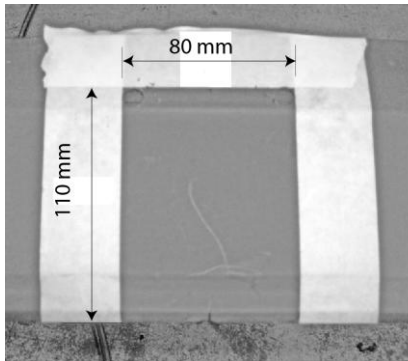


Figure 2 – Bumper Cut out illustrations for Wagon.



Wiring Loom Fitting Instructions  
To Suit Volvo V50  
Part Number 100269-WL

### Wiring Loom Installation Instructions

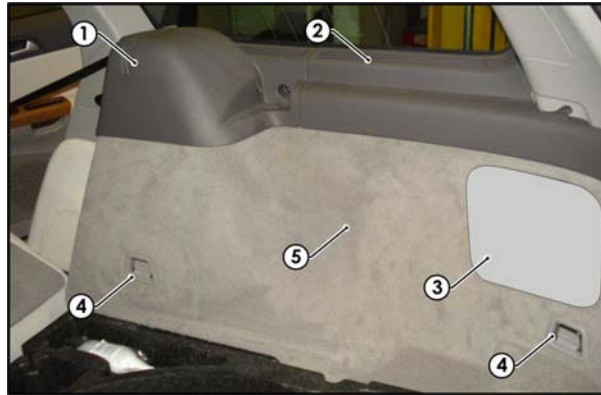
Volvo V50  
Part No: 100269-WL

ECU Required: 04826  
Tail Harness Length Required: 1200mm  
RPA Override Switch Part No: 04848 (If Fitted)

Wiring Loom Installation Time: Approx 40 Mins

## Wiring Loom Fitting Instructions To Suit Volvo V50 Part Number 100269-WL

1. In the luggage compartment, remove the floor carpet cover.



2. Remove the upper RHS side trim left panel (1).
3. Remove the upper RHS side trim right panel (2).
4. Remove the RHS access panel cover (3).
5. Remove the RHS cargo hook covers (4).
6. Remove the RHS side trim (5).
7. On the luggage compartment floor, locate the RHS vehicle grommet.
8. Drill a  $\text{Ø}31\text{mm}$  hole in the vehicle grommet.
9. File any rough or sharp edges and spray on rust inhibitor.
10. Route the trailer harness (P/No: 100269-WL) patch connectors towards the LHS of the vehicle.
11. Disconnect the LHS tail light connector from the tail light assembly.
12. Patch in the trailer patch mating connectors.
13. Route the trailer harness along the rear of the luggage compartment, towards the RHS of the vehicle.
14. Disconnect the RHS tail light connector from the tail light assembly.
15. Patch in the trailer patch mating connectors.
16. Route the trailer harness upwards, following the main harness towards the upper RHS rear trim.
17. Disconnect the upper RHS connector.



Wiring Loom Fitting Instructions  
To Suit Volvo V50  
Part Number 100269-WL

18. Patch in the trailer patch mating connectors.
19. On the RHS of the luggage compartment, near the previously drilled out grommet hole, locate the 'BLACK' 2-way connector.
20. Following the table below, connect the ezy tap to the vehicle 'ORANGE' 12v power wire, then connect the trailer harness 'ORANGE' wire terminal to the ezy tap.

Function	Trailer Patch	Vehicle Connector
12v POWER	ORANGE	ORANGE

21. Connect the trailer harness 12-way connector into the ECU (04826).
22. In the RHS rear quarter of the luggage compartment, apply double sided tape to the ECU and adhere it to the vehicle sheet metal.
23. Mount the trailer socket to the towbar mounting bracket using M4 fasteners (not supplied).
24. From outside the vehicle, route the tail harness (tail length 1200mm) along the towbar towards the RHS of the vehicle and up through the previously drilled out grommet hole.
25. Ensure the grommet is seated correctly and secure it in place with a cable tie (not supplied).
26. Connect the tail harness 8-way connector into the trailer harness mating 8-way connector.
27. Test the Trailer socket using a light board or multi-meter.
28. Secure all harnesses using cables ties (not supplied).
29. Re-fit all removed parts and secure all fasteners.
30. Place instructions in glove box after fitment.