

TRAILBOSS

Towbar Fitting Instructions To Suit **VOLVO V40 03/2013 - ON** Part Number **QTVO007L** Rating **1500/75 kg**

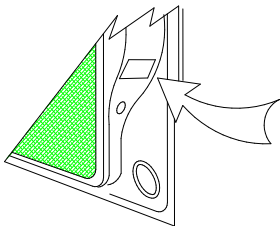
PLACE THESE INSTRUCTIONS IN THE VEHICLE'S GLOVEBOX AFTER INSTALLATION IS COMPLETE

WARNING:

1. Do not, drill, cut, weld or otherwise modify the tow bar.
2. If you are using electric welding on a motor vehicle, **always** check that the vehicle is not equipped with electronic engine or instrument management equipment. Failure to do so could **destroy** any onboard computers. If in doubt, check with the vehicle's manufacturer.
3. The high tensile fasteners supplied with this product were used to achieve the specified rating. If replacement is required ensure that fasteners of the same rating & quality are used. Contact an authorised **Trailboss** dealer if further information is required.

General:

1. Ensure all hardware items have been included refer to assembly diagram.
2. It is recommended that the instructions are read through and completely understood before making any attempt to fit this product.
3. Be wary of any changes to vehicle designs or other accessories that may conflict with the installation of this product.
4. Before drilling ensure that the area is clear of fuel, electrical & other components.
5. All holes drilled into the body panels shall have all burrs & swarf removed then coated with a suitable rust preventative paint.
6. For vehicles that require the bumper to be cut. Ensure cut out area is in correct position on the vehicle prior to cutting the bumper.
7. The high tensile fasteners supplied with this product were used to achieve the specified rating. If replacement is required ensure that fasteners of the same rating & quality are used. Contact an authorized **Trailboss** dealer if further information is required.
8. Ensure that all hardware is fastened to torque list below check fasteners on regular basis.
9. Tow bar load rating sticker provided with this product shall be conspicuously located on inside rear end of the driver's door. **(See diagram below)**.
10. Trailboss recommends that you check your tow ball to ensure that it complies with the Australian standards **AS 4177.2**.
11. **PLEASE NOTE:** It is advised to remove your lug or tbn when not actually towing so as to produce a clear view of the vehicles registration plate if obscured, and to also provide maximum available departure angle
12. Pull Pin must be fit in down position.



Place load rating sticker
inside driver's door here

FOR TRAILER TOWING PURPOSES ONLY
For towing capacity details please refer to vehicle owner's manual or to the manufacturer. Overloading can void your warranties.

RECOMMENDED ASSEMBLY TORQUE LISTING

<u>Diameter</u>	<u>Grade 8.8 Bolt</u>
M6	9.5 Nm
M8	21.7 Nm
M10	43.4 Nm
M12	77.3Nm
M14	146 Nm
M16	189.8 Nm

Tow bar Maintenance and Care.

Trailboss recommends that bolt torque's, as listed below, are routinely and regularly inspected and checked for correct tension. Replace any worn or defective parts.

We recommended to remove Tow Ball Mounts (TBM's, tongues or lugs) when not being used for any considerable length of time.

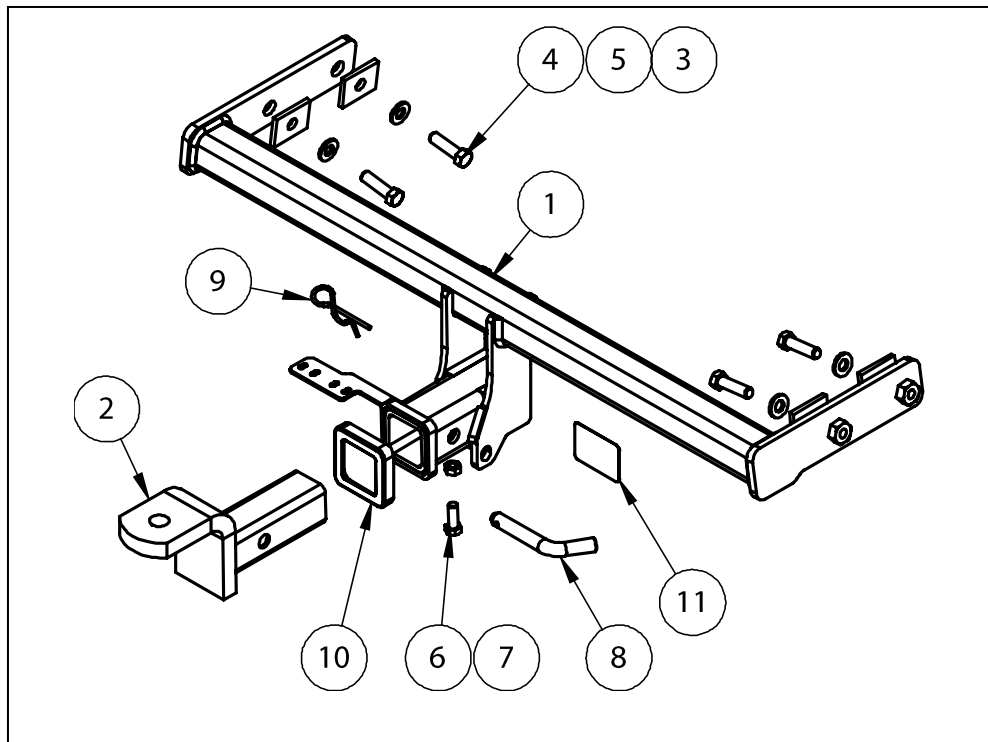
So as to avoid injury, when not towing it is suggested that the tongue, Pull Pin and R-clip are removed then stored in a safe, clean and dry place, away from excessive moisture.

Hitch Pull Pins and spring "R" clips are regularly checked for proper installation. Replace any worn or defective parts.

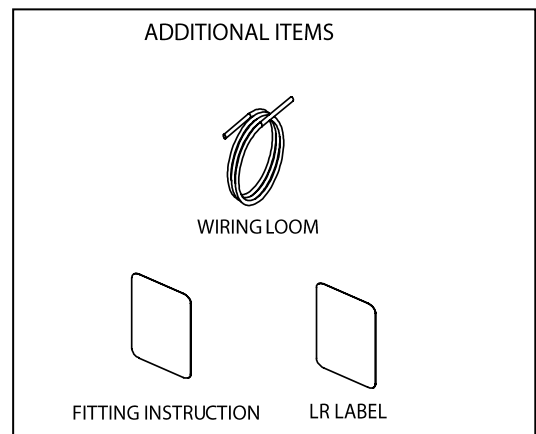
TRAILBOSS

Towbar Fitting Instructions
 To Suit **VOLVO V40 03/2013 - ON**
 Part Number **QTVO007L**
 Rating **1500/75 kg**

PLACE THESE INSTRUCTIONS IN THE VEHICLE'S GLOVEBOX AFTER INSTALLATION IS COMPLETE



QTY	DESCRIPTION	ITEM NO.
1	WELDED ASSEMBLY	1
1	CLASS 4 TBM	2
4	FITTING PLATE 53x40x6mm	3
4	M12x1.75x45 HEX BOLT	4
4	WASHER FLAT 1/2"x1 1/8"x1/8"	5
1	SET SCREW HEX HD M10x10x30x1.5P	6
1	HEX NUT M10x1.5	7
1	PULL PIN	8
1	R CLIP	9
1	HITCH BOX COLLAR COVER	10
1	ACRYLIC COMPLIANCE PLATE	11





Towbar Fitting Instructions
To Suit **VOLVO V40 03/2013 - ON**
Part Number **QTVO007L**
Rating **1500/75 kg**

PLACE THESE INSTRUCTIONS IN THE VEHICLE'S GLOVEBOX AFTER INSTALLATION IS COMPLETE

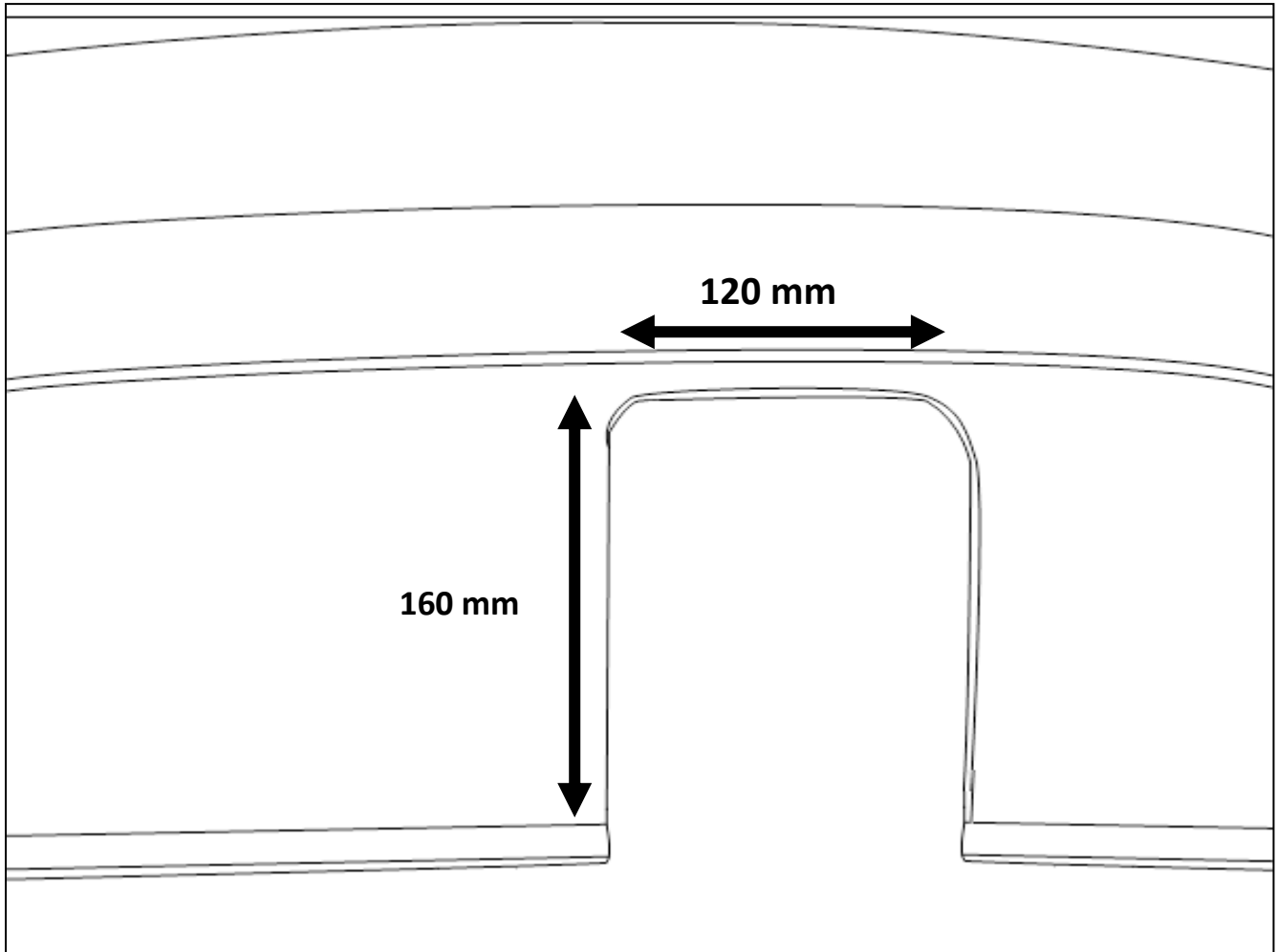
INSTRUCTION:

1. Remove both Torx Screws on lower Bumper from RHS. Repeat for LHS.
2. Remove RHS Rubber Stop found under Tailgate. Repeat for LHS.
3. Remove all 5 x Torx Screws from both Wheel Wells from LHS, Repeat for RHS.
4. Carefully remove Bumper by disconnecting catches and place in a safe area. Disconnect Wiring Connector under right hand side Tail lamp.
5. Remove 3x Bolts on each side of the Rear Impact Beam and detach, placing beam to the side.
6. Lower Exhaust system by removing Bolts closest to the rear of vehicle. Bend Heat shield away from Chassis Rail, allowing for access to mounting holes on Chassis Rail.
7. Offer Towbar to vehicle, loosely secure the Towbar. Then torque all Bolts to 127Nm. Adjust Heat Shield to its original position.
8. Lift exhaust and refit Bolts to secure exhaust. Refit Rear Impact Beam on top of Towbar.
9. Cut Bumper as shown.
10. Re attach Bumper referring to Steps 1-4 in reverse.



Towbar Fitting Instructions
To Suit **VOLVO V40 03/2013 - ON**
Part Number **QTVO007L**
Rating **1500/75 kg**

PLACE THESE INSTRUCTIONS IN THE VEHICLE'S GLOVEBOX AFTER INSTALLATION IS COMPLETE



**BUMPER CUT
(NOT TO SCALE)**



Wiring Loom Fitting Instructions
To Suit Volvo V40
Part Number 100880-WL

Wiring Loom Installation Instructions

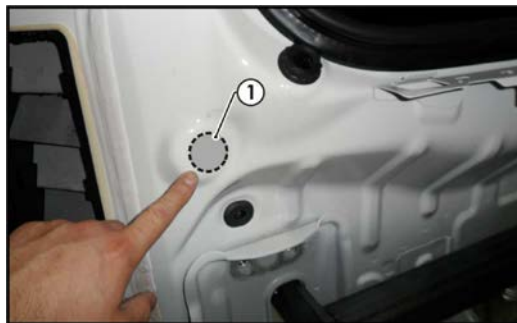
Volvo V40
Part No: 100880-WL

Tail Harness Length Required: 1200mm

Wiring Loom Installation Time: Approx 30 Mins

Wiring Loom Fitting Instructions To Suit Volvo V40 Part Number 100880-WL

1. Inside the luggage compartment, remove the parcel shelf.
2. Remove the carpet floor cover.
3. Remove the two screws and pull the rear luggage compartment trim in an upwards direction.
4. On the LHS of the luggage compartment, dislodge the upper plastic trim and disconnect the 12v light connector.
5. Remove the LHS luggage compartment trim.
6. On the LHS of the rear passenger seat, dislodge the plastic pillar trim.
7. Pull the latch underneath the rear passenger seat.
8. Remove the rear passenger seat base.
9. Remove the LHS rear door trim.
10. Remove the front passenger door sill trim.
11. On the LHS kick panel trim, remove the screw and the bonnet lever.
12. Remove the LHS kick panel trim.
13. Remove the fuse panel cover located under the glove box.
14. Remove the rear bumper fascia.
15. On the outside of the vehicle, next to the LHS air vent, drill a Ø30mm hole (1).

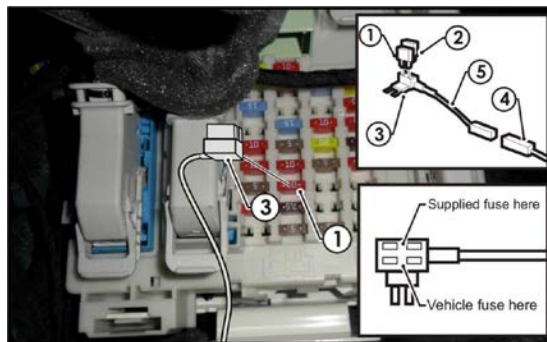


16. File any rough or sharp edges and spray on rust inhibitor.
17. In the LHS of the luggage compartment, disconnect the tail light assembly connectors and connect the trailer patch (P/No: 100880-WL) connectors.
18. Connect the trailer patch ground ring terminal to the vehicle grounding point.

TRAILBOSS

Wiring Loom Fitting Instructions To Suit Volvo V40 Part Number 100880-WL

19. Apply double sided tape to the ECU (04826) and secure it to the vehicle sheet metal on the LHS of the luggage compartment on a suitable location.
20. Connect the trailer wiring harness 12-way connector to the ECU.
Note: Ensure the ECU connector is facing downwards.
21. Route the trailer patch (P/No: 100880-WL) along the rear trim towards the RHS.
22. In the RHS of the luggage compartment, disconnect the tail light assembly connectors and connect the trailer patch (P/No: 100880-WL) connectors.
23. On the LHS route the 'ORANGE' power towards the front of the vehicle, following the existing vehicle harness and up towards the fuse panel.
24. Inside the fuse panel, locate the 10-amp (1) fuse as shown and remove.
25. Insert the supplied 20-amp fuse (2) into the upper slot of the add-a-fuse (3) and insert the previously removed 10-amp fuse (1) into the bottom slot of the add-a-fuse (3).
26. Plug the add-a-fuse (3) into the previously removed 10-amp fuse slot.
27. Connect the power patch 1-way connector (4) into the add-a-fuse harness mating connector (5).



28. Mount the trailer socket to the tow bar mounting bracket using M4 fasteners (not supplied).
29. Route the tail harness across the tow bar towards the LHS of the vehicle and up through the previously drilled out hole.
30. Ensure the tail harness grommet is seated correctly and secure in place using a cable tie (not supplied).
31. Connect the tail harness (tail length 1200mm) 8-way connector to the trailer wiring harness mating 8-way connector.



Wiring Loom Fitting Instructions
To Suit Volvo V40
Part Number 100880-WL

32. Test the trailer wiring harness function using a light board or multi meter.
33. Secure all harnesses using cable ties (not supplied).
34. Re-fit all removed parts and secure all fasteners, ensuring there are no squeaks or rattles.
35. Place the fitting instructions in the glove box after fitment.