

TRAILBOSS

Towbar Fitting Instructions To Suit **VW PASSAT TOWBAR** on Part Number **QTVW208L** Rating **1500 kg**

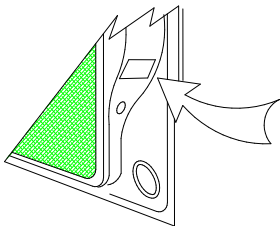
PLACE THESE INSTRUCTIONS IN THE VEHICLE'S GLOVEBOX AFTER INSTALLATION IS COMPLETE

WARNING:

1. Do not, drill, cut, weld or otherwise modify the tow bar.
2. If you are using electric welding on a motor vehicle, **always** check that the vehicle is not equipped with electronic engine or instrument management equipment. Failure to do so could **destroy** any onboard computers. If in doubt, check with the vehicle's manufacturer.
3. The high tensile fasteners supplied with this product were used to achieve the specified rating. If replacement is required ensure that fasteners of the same rating & quality are used. Contact an authorised **Trailboss** dealer if further information is required.

General:

1. Ensure all hardware items have been included refer to assembly diagram.
2. It is recommended that the instructions are read through and completely understood before making any attempt to fit this product.
3. Be wary of any changes to vehicle designs or other accessories that may conflict with the installation of this product.
4. Before drilling ensure that the area is clear of fuel, electrical & other components.
5. All holes drilled into the body panels shall have all burrs & swarf removed then coated with a suitable rust preventative paint.
6. For vehicles that require the bumper to be cut. Ensure cut out area is in correct position on the vehicle prior to cutting the bumper.
7. The high tensile fasteners supplied with this product were used to achieve the specified rating. If replacement is required ensure that fasteners of the same rating & quality are used. Contact an authorized **Trailboss** dealer if further information is required.
8. Ensure that all hardware is fastened to torque list below check fasteners on regular basis.
9. Tow bar load rating sticker provided with this product shall be conspicuously located on inside rear end of the driver's door. **(See diagram below)**.
10. Trailboss recommends that you check your tow ball to ensure that it complies with the Australian standards **AS 4177.2**.
11. **PLEASE NOTE:** It is advised to remove your lug or tbm when not actually towing so as to produce a clear view of the vehicles registration plate if obscured, and to also provide maximum available departure angle
12. Pull Pin must be fit in down position.



Place load rating sticker
inside driver's door here

FOR TRAILER TOWING PURPOSES ONLY
For towing capacity details please refer to vehicle owner's manual or to the manufacturer. Overloading can void your warranties.

RECOMMENDED ASSEMBLY TORQUE LISTING

Diameter	Grade 8.8 Bolt
M6	9.5 Nm
M8	21.7 Nm
M10	43.4 Nm
M12	77.3Nm
M14	146 Nm
M16	189.8 Nm

Tow bar Maintenance and Care.

Trailboss recommends that bolt torque's, as listed below, are routinely and regularly inspected and checked for correct tension. Replace any worn or defective parts.

We recommended to remove Tow Ball Mounts (TBM's, tongues or lugs) when not being used for any considerable length of time.

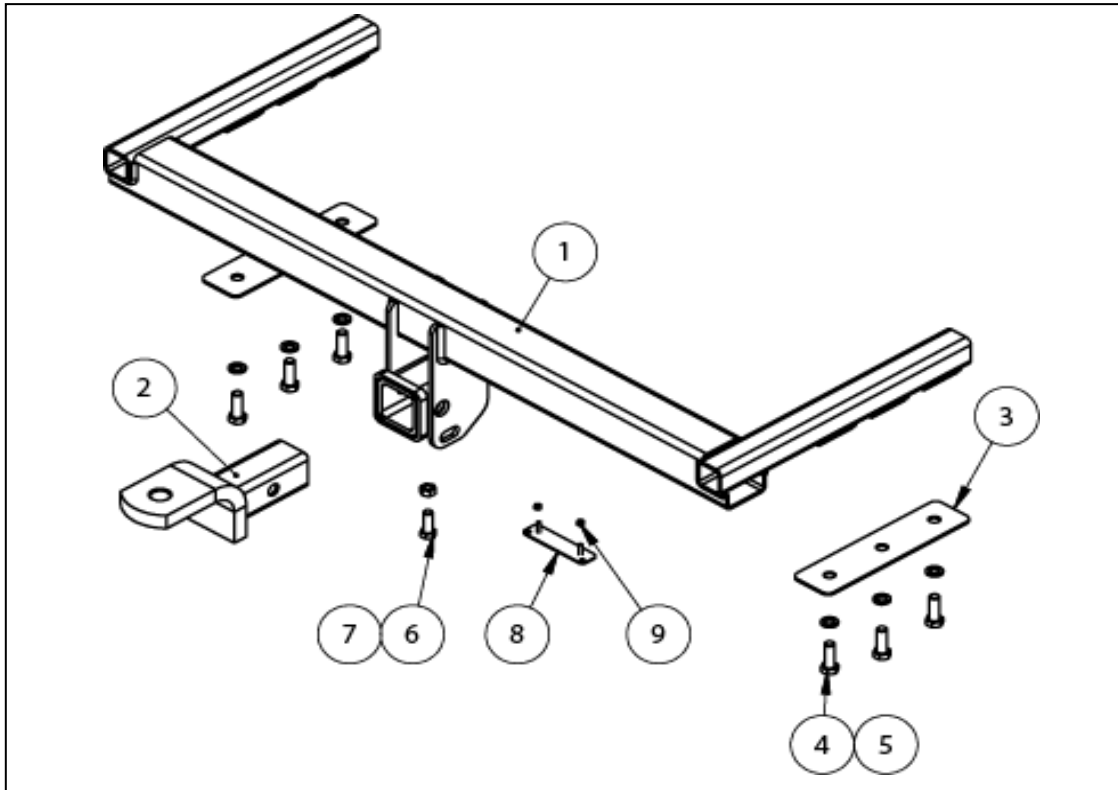
So as to avoid injury, when not towing it is suggested that the tongue, Pull Pin and R-clip are removed then stored in a safe, clean and dry place, away from excessive moisture.

Hitch Pull Pins and spring "R" clips are regularly checked for proper installation. Replace any worn or defective parts.

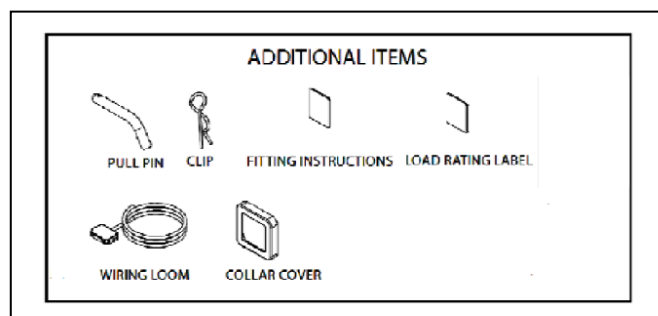
TRAILBOSS

Towbar Fitting Instructions
 To Suit **VW PASSAT TOWBAR** on
 Part Number **QTVW208L**
 Rating **1500 kg**

PLACE THESE INSTRUCTIONS IN THE VEHICLE'S GLOVEBOX AFTER INSTALLATION IS COMPLETE



ITEM NO.	DESCRIPTION	QTY.
1	WELDED ASSEMBLY	1
2	T.B. MOUNT	1
3	WASHER PLATE	2
4	BOLT M12-1.75x35	6
5	WASHER SPRING FT SEC M12x4.0x2.5mm	6
6	SET SCREW HEX HD M10x30x1.5P	1
7	HEX NUT M10x1.5	1
8	PLUG BRACKET	1
9	NUT NYLOC M4-0.7 Z/P	2





Towbar Fitting Instructions
To Suit **VW PASSAT TOWBAR** on
Part Number **QTVW208L**
Rating **1500 kg**

PLACE THESE INSTRUCTIONS IN THE VEHICLE'S GLOVEBOX AFTER INSTALLATION IS COMPLETE

1. Remove 4 Screws inside Mud Guard for both LH & RH side; also remove 1 Screw located behind Mud Guard lining for both LH & RH side.
2. Remove Plastic Scrivet from top of the Rear Bumper which inside of the Mud Guard.
3. Remove both middle and driver side Plastic Covers.
4. Remove Boot Floor Panel and LH &RH Side Panels. Also remove Plastic Boot Latch Cover.
5. Remove LH &RH rear lights by disconnecting Plug and unscrewing Spring Plastic Screw.
6. Remove both Screws which are located under the Tail lights for both LH & RH Side.
7. Remove Bumper Bar by firmly pulling on it to disconnect the clips.
Note: If fitted, disconnect Parking sensors.
8. Remove Impact Beam.
9. Remove exhaust Heat Shield and drill 2 Ø22 holes at 134mm and 220mm from front edge.
10. Drill 3 Ø14 holes in the middle of the Chassis rail for both LH &RH sides at 69mm, 155mm and 241mm from back face.
11. Insert Towbar into Chassis Rail, loosely Bolt in 6 M12 Bolts Spring Washer and Washer Plate. Ensure back of Towbar Cross Tube is 50mm away from Chassis and then tighten all Bolts to specified torque Settings.
12. Cut out Centre Section of Bumper 100mm Wide and 150mm long from back of Bumper, cover cut with Bumper Trim provided.
13. Reinstall Bumper and all associated parts in reverse order to disassembly.



Wiring Loom Fitting Instructions
To Suit Volkswagen Passat MY12
Part Number 100831-WL

Wiring Loom Installation Instructions

Volkswagen Passat MY12

Part No: 100831-WL

ECU Required: 04836

Tail Harness Length Required: 1200mm

Wiring Loom Installation Time: Approx 45 Mins

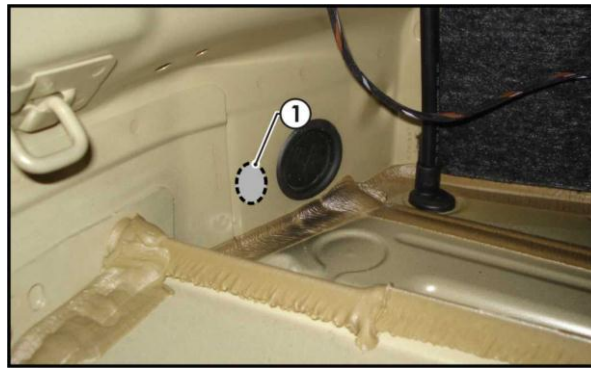
TRAILBOSS

Wiring Loom Fitting Instructions To Suit Volkswagen Passat MY12 Part Number 100831-WL

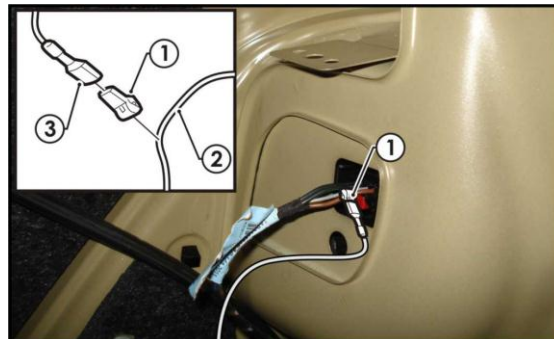
1. In the luggage compartment, remove the floor carpet cover.
2. Remove the rear luggage compartment trim by pulling up in an upwards direction.
3. On the RHS of the luggage compartment trim, remove the screw.
4. Dislodge the luggage compartment trim lining from the plastic trim.

Repeat for the LHS.

5. Carefully dislodge the RHS luggage compartment trim, and disconnect the 12v power connector and light connector.
6. Inside the luggage compartment, on the LHS rear quarter panel, drill a Ø30mm hole (1) next to the existing vehicle grommet.



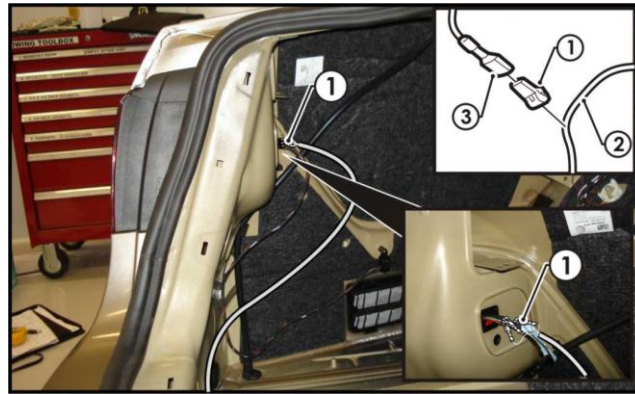
7. File any rough or sharp edges and spray rust inhibitor.
8. On the RHS of the luggage compartment, following the table below, connect the ezy-tap (1) to the vehicle 'BLACK / GREEN' R.IND wire (2), and then connect the trailer patch terminal (3) to the ezy-tap (1).



Function	Trailer Patch	Vehicle Connector
R.IND	GREEN / BLACK	BLACK / GREEN

Wiring Loom Fitting Instructions To Suit Volkswagen Passat MY12 Part Number 100831-WL

9. Route the trailer harness (P/No: 100831-WL), along the rear luggage compartment panel towards the LHS of the vehicle.
10. On the LHS of the luggage compartment, following the table below, connect the ezy-tap (1) to the corresponding vehicle wires (2), and then connect the trailer patch terminal (3) to the ezy-tap (1).

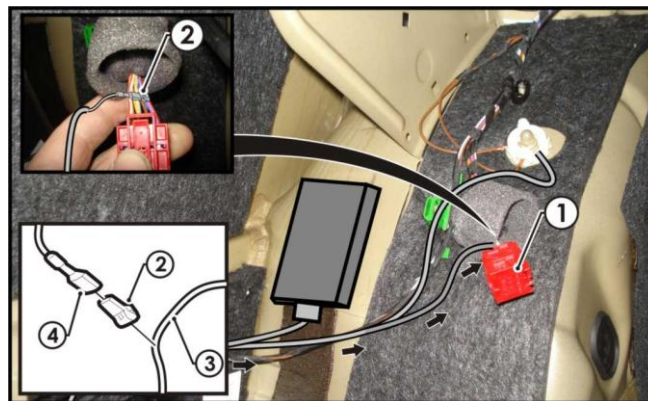


Function	Trailer Patch	Vehicle Connector
L.IND	YELLOW / BLACK	BLACK
REVERSE	BLACK / WHITE	GREY / WHITE
TAIL / BRAKES	BROWN / BLACK	BROWN / GREY

11. Connect the trailer patch ground ring terminal to the vehicle grounding point.
12. Apply double sided tape to the ECU (04836) and adhere it to the vehicle sheet metal on the LHS of the luggage compartment wheel arch.
13. Connect the trailer patch 12-way connector to the ECU (04836).

Wiring Loom Fitting Instructions To Suit Volkswagen Passat MY12 Part Number 100831-WL

14. Route the 'ORANGE' power wire (1) towards the red connector on the LHS of the luggage compartment.
15. Following the table below, connect the ezy-tap (2) to the corresponding power vehicle wire (3), then connect the trailer patch terminal (4) to the ezy-tap (2).



Function	Trailer Patch	Vehicle Connector
POWER	ORANGE	PURPLE / RED

16. Mount the trailer socket to the tow bar mounting bracket using M4 fasteners (not supplied).
17. Route the tail harness across the tow bar towards the RHS of the vehicle and up through the previously drilled out hole.
18. Ensure the tail harness grommet is seated correctly and secure in place using a cable tie (not supplied).
19. Connect the tail harness (tail length 1200mm) 8-way connector to the trailer patch mating 8-way connector.
20. Test the trailer patch function using a light board or multi meter.
21. Secure all harnesses using cable ties (not supplied).
22. Re-fit all removed parts and secure all fasteners, ensuring there are no squeaks or rattles.
23. Place the fitting instructions in the glove box after fitment.