

# TRAILBOSS

Towbar Fitting Instructions  
To Suit VW PASSAT 3C WAGON 12/2006-06/2011  
Part Number **QTVW211L**  
Rating **1800/180 kg**

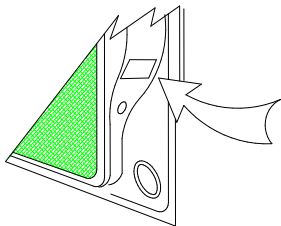
PLACE THESE INSTRUCTIONS IN THE VEHICLE'S GLOVEBOX AFTER INSTALLATION IS COMPLETED

## WARNING:

1. Do not, drill, cut, weld or otherwise modify the tow bar.
2. If you are using electric welding on a motor vehicle, **always** check that the vehicle is not equipped with electronic engine or instrument management equipment. Failure to do so could **destroy** any onboard computers. If in doubt, check with the vehicle's manufacturer.
3. The high tensile fasteners supplied with this product were used to achieve the specified rating. If replacement is required ensure that fasteners of the same rating & quality are used. Contact an authorised **Trailboss** dealer if further information is required.

## General:

1. Ensure all hardware items have been included refer to assembly diagram.
2. It is recommended that the instructions are read through and completely understood before making any attempt to fit this product.
3. Be wary of any changes to vehicle designs or other accessories that may conflict with the installation of this product.
4. Before drilling ensure that the area is clear of fuel, electrical & other components.
5. All holes drilled into the body panels shall have all burrs & swarf removed then coated with a suitable rust preventative paint.
6. For vehicles that require the bumper to be cut. Ensure cut out area is in correct position on the vehicle prior to cutting the bumper.
7. The high tensile fasteners supplied with this product were used to achieve the specified rating. If replacement is required ensure that fasteners of the same rating & quality are used. Contact an authorized **Trailboss** dealer if further information is required.
8. Ensure that all hardware is fastened to torque list below check fasteners on regular basis.
9. Tow bar load rating sticker provided with this product shall be conspicuously located on inside rear end of the driver's door. **(See diagram below)**.
10. Trailboss recommends that you check your tow ball to ensure that it complies with the Australian standards **AS 4177.2**.
11. **PLEASE NOTE:** It is advised to remove your lug or tbm when not actually towing so as to produce a clear view of the vehicles registration plate if obscured, and to also provide maximum available departure angle
12. Pull Pin must be fit in down position.



Place load rating sticker  
inside driver's door here

**FOR TRAILER TOWING PURPOSES ONLY**  
For towing capacity details please refer to vehicle owner's manual or to the manufacturer. Overloading can void your warranties.

### RECOMMENDED ASSEMBLY TORQUE LISTING

Diameter	Grade 8.8 Bolt
M6	9.5 Nm
M8	21.7 Nm
M10	43.4 Nm
M12	77.3Nm
M14	146 Nm
M16	189.8 Nm

## Tow bar Maintenance and Care.

Trailboss recommends that bolt torque's, as listed below, are routinely and regularly inspected and checked for correct tension. Replace any worn or defective parts.

We recommended to remove Tow Ball Mounts (TBM's, tongues or lugs) when not being used for any considerable length of time.

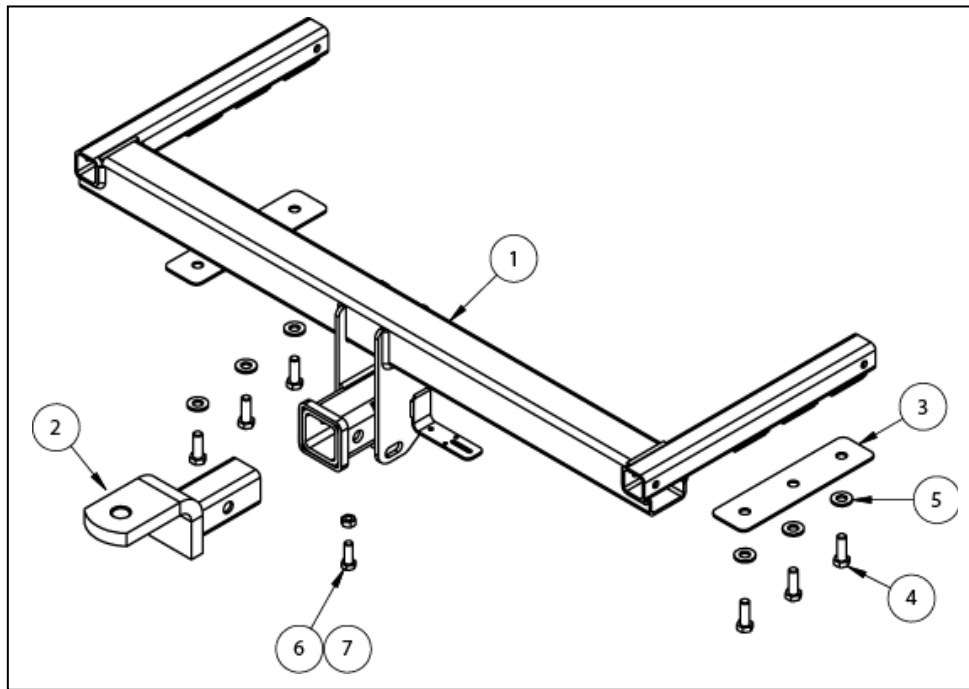
So as to avoid injury, when not towing it is suggested that the tongue, Pull Pin and R-clip are removed then stored in a safe, clean and dry place, away from excessive moisture.

Hitch Pull Pins and spring "R" clips are regularly checked for proper installation. Replace any worn or defective parts.

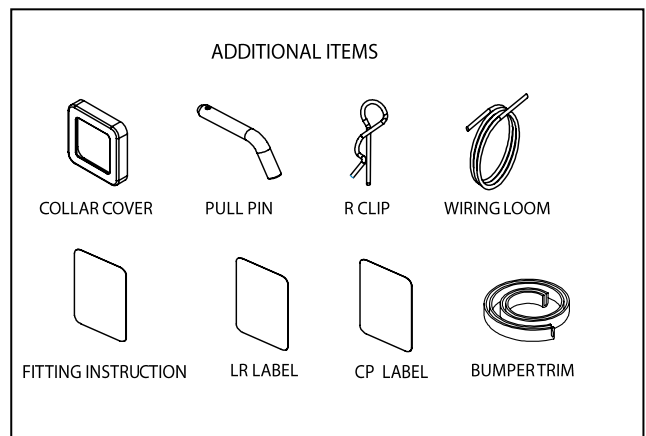
# TRAILBOSS

Towbar Fitting Instructions  
 To Suit VW PASSAT 3C WAGON 12/2006-06/2011  
 Part Number **QTVW211L**  
 Rating **1800/180 kg**

PLACE THESE INSTRUCTIONS IN THE VEHICLE'S GLOVEBOX AFTER INSTALLATION IS COMPLETED



QTY	DESCRIPTION	ITEM NO
1	WELDED ASSEMBLY	1
1	TBM	2
2	WASHER PLATE	3
6	BOLT M12-1.75x35 GR10.9	4
6	WASHER FLAT 1/2"x1 1/8"x1/8"	5
1	SET SCREW HEX HD M10x30x1.5P	6
1	HEX NUT M10x1.5	7
1	PLUG BRACKET	8
2	NUT NYLOC M4-0.7 Z/P	9



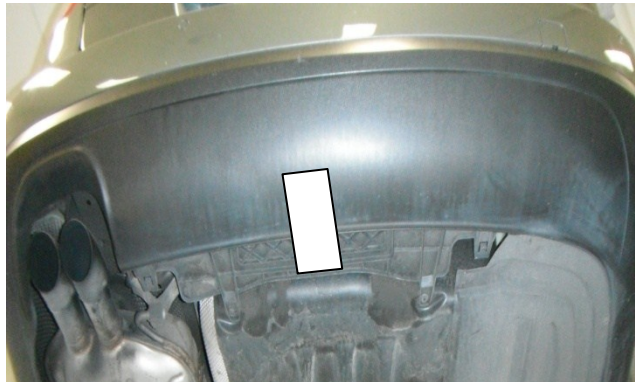
# TRAILBOSS

Towbar Fitting Instructions  
To Suit VW PASSAT 3C WAGON 12/2006-06/2011  
Part Number **QTVW211L**  
Rating **1800/180 kg**

PLACE THESE INSTRUCTIONS IN THE VEHICLE'S GLOVEBOX AFTER INSTALLATION IS COMPLETED

## INSTRUCTION:

1. Remove 4 Screws inside Mud Guard for both LH & RH side.
2. Remove Plastic Scrivet from top of the Rear Bumper which inside of the Mud Guard.
3. Remove 2 Bumper Screws located on underside of vehicle and remove driver side Plastic Covers.
4. Remove Plastic Cover from side of light to expose Rear Light Nut, remove Nut and Hinge Rear Lights outwards to release from Clips.
5. Remove 2 Screws located under Tail Lights for both LH & RH side.
6. Firmly push backwards on the Bumper Wheel well to disconnect from Clips for both LH & RH side and pull back on Bumper Bar to remove from vehicle. Note: Disconnect Parking Sensors.
7. Remove Impact Beam.
8. Remove Exhaust Heat Shield and drill 2  $\varnothing 22$  holes at 134mm and 220mm from front edge.
9. Drill 3  $\varnothing 14$  holes in the middle of the Chassis Rail for both LH & RH sides at 69mm, 155mm and 241mm from back face. Note: Exhaust Muffler will be needed to be dropped to gain access to passenger side Chassis Rail and on some variants a 90 degree drill will be needed.
10. Insert Towbar into Chassis Rail, loosely Bolt in 6 M12 Bolts, Spring Washer and Washer Plate. Ensure back of Towbar Cross Tube is 50mm away from Chassis and then tighten all Bolts to specified torque settings.
11. Cut out centre section of Bumper 100mm Wide and 165mm long from back of Bumper, cover cut with Bumper Trim provided.
12. Reinstall Bumper and all associated parts in reverse order to disassembly.





Wiring Loom Fitting Instructions  
To Suit Volkswagen Passat Wagon & Alltrack  
Part Number 100864-WL

Wiring Loom Installation Instructions

Volkswagen Passat Wagon & Alltrack  
Part No: 100864-WL

Tail Harness Length Required: 1800mm  
ECU Required: 04836

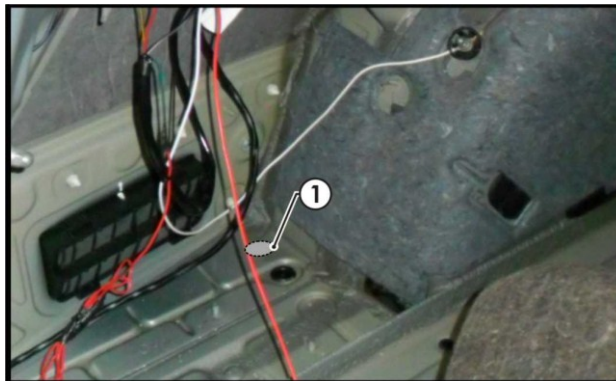
Wiring Loom Installation Time: Approx 45 Mins

## Wiring Loom Fitting Instructions To Suit Volkswagen Passat Wagon & Alltrack Part Number 100864-WL

1. In the luggage compartment, remove the floor carpet cover.
2. Remove the LHS plastic cover by first removing the two screws.
3. Remove the tool tray.
4. Remove the spare wheel by first removing the fastener in the centre of the spare wheel.
5. Remove the two outer plastic covers around the wheel well by first removing the six screws.
6. Remove the rear luggage compartment trim, by removing the two clips and pulling in an upwards direction.
7. On the LHS of the luggage compartment, remove the screw and the access panel cover.
8. Dislodge the LHS luggage compartment trim.

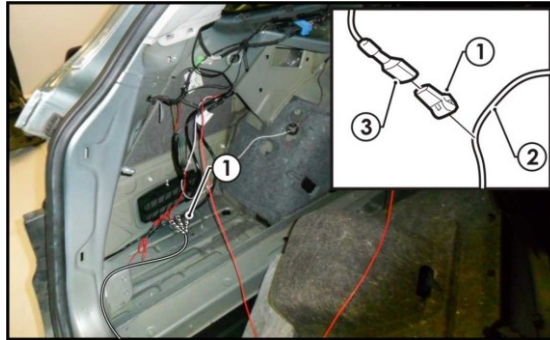
**Repeat steps 7 & 8 for the RHS.**

9. Dislodge the rear seat base to gain access to the RHS door trim screws & bolt.
10. Remove the RHS door trim by first removing the two screws and the bolt.
11. On the driver's side, remove the door trim.
12. Remove the driver's side kick panel trim by first releasing the screw on the bonnet lever.
13. Remove the driver's side dash side trim.
14. On the LHS rear quarter of the vehicle, drill a Ø30mm hole (1).
15. File any rough or sharp edges and spray on rust inhibitor.



## Wiring Loom Fitting Instructions To Suit Volkswagen Passat Wagon & Alltrack Part Number 100864-WL

16. In the LHS of luggage compartment, following the table below, connect the ezy-taps (1) to the corresponding vehicle wires (2), then connect the trailer patch terminals (3) to the ezy-taps (1).



### Passat Wagon

Function	Trailer Patch	Vehicle Connector
L. IND	YELLOW/BLACK	GREEN/BLUE
REVERSE	BLACK/WHITE	BLACK / YELLOW
TAIL/BRAKES	BROWN / BLACK	YELLOW / PURPLE

### Passat Alltrack

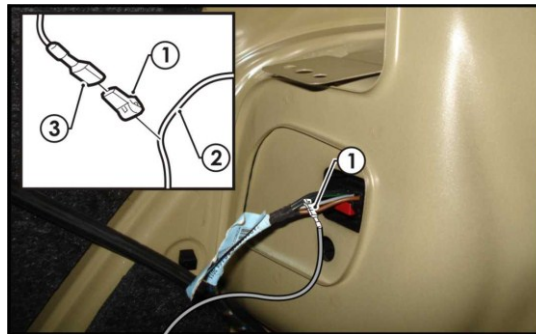
Function	Trailer Patch	Vehicle Connector
L. IND	YELLOW/BLACK	BLACK
REVERSE	BLACK/WHITE	BLACK / YELLOW
TAIL/BRAKES	BROWN / BLACK	BROWN / GREY

17. Connect the trailer patch ground ring terminal to the vehicle grounding point.
18. Apply double sided tape to the ECU (04836) and adhere it to the vehicle sheet metal on the LHS of the luggage compartment in a suitable location.
19. Connect the trailer patch 12-way connector to the ECU.
20. Route the trailer patch (P/No: 100864-WL) towards the RHS of the vehicle along the rear of the luggage compartment.

# TRAILBOSS

## Wiring Loom Fitting Instructions To Suit Volkswagen Passat Wagon & Alltrack Part Number 100864-WL

21. Following the table below, connect the ezy-tap (1) to the corresponding vehicle wire (2), then connect the trailer patch terminal (3) to the ezy-tap (1).



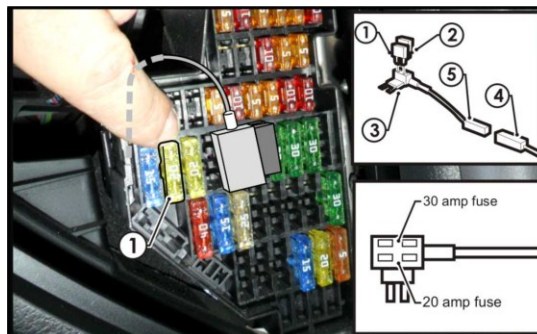
### Passat Wagon

Function	Trailer Patch	Vehicle Connector
R.IND	GREEN/BLACK	BLUE/BROWN

### Passat Alltrack

Function	Trailer Patch	Vehicle Connector
R.IND	GREEN/BLACK	BLACK / GREEN

22. Route the 'ORANGE' power wire along the existing vehicle harness towards the front of the vehicle.
23. Continue routing the 'ORANGE' power wire up through the driver's kick panel area towards the fuse panel.
24. Inside the fuse panel, locate the 20-amp (1) fuse as shown and remove.
25. Insert the supplied 30-amp fuse (2) into the upper slot of the add-a-fuse (3) and insert the previously removed 20-amp fuse (1) into the bottom slot of the add-a-fuse (3).
26. Plug the add-a-fuse (3) into the previously removed 20-amp fuse slot (1).
27. Connect the power patch 1-way connector (4) into the add-a-fuse harness mating connector (5).





Wiring Loom Fitting Instructions  
To Suit Volkswagen Passat Wagon & Alltrack  
Part Number 100864-WL

28. Mount the trailer socket to the towbar mounting bracket using M4 fasteners (not supplied).
29. Route the tail harness (tail length 1800mm) across the tow bar towards the LHS of the vehicle and up through the previously drilled out hole.
30. Ensure the tail harness grommet is seated correctly and secure in place using a cable tie (not supplied).
31. Connect the tail harness 8-way connect to the trailer patch 8-way connector.
32. Test the trailer patch function using a light board or multi meter.
33. Secure all harnesses using cable ties (not supplied).
34. Re-fit all removed parts and secure all fasteners, ensuring there are no squeaks or rattles.
35. Place the fitting instructions in the glove box after fitment.