

TRAILBOSS

Towbar Fitting Instructions
To Suit **VOLKSWAGEN TRANSPORTER T6 SERIES**
Part Number **QTVW218L**
Rating **2500/100 kg**

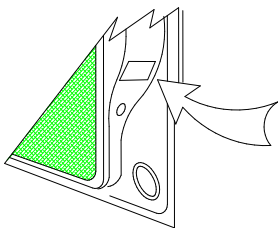
PLACE THESE INSTRUCTIONS IN THE VEHICLE'S GLOVEBOX AFTER INSTALLATION IS COMPLETED

WARNING:

1. Do not, drill, cut, weld or otherwise modify the tow bar.
2. If you are using electric welding on a motor vehicle, **always** check that the vehicle is not equipped with electronic engine or instrument management equipment. Failure to do so could **destroy** any onboard computers. If in doubt, check with the vehicle's manufacturer.
3. The high tensile fasteners supplied with this product were used to achieve the specified rating. If replacement is required ensure that fasteners of the same rating & quality are used. Contact an authorised **Trailboss** dealer if further information is required.
4. If TBM is used in inverted position tow ball may make contact with rear tailgate when lowered, which could cause damage.

General:

1. Ensure all hardware items have been included refer to assembly diagram.
2. It is recommended that the instructions are read through and completely understood before making any attempt to fit this product.
3. Be wary of any changes to vehicle designs or other accessories that may conflict with the installation of this product.
4. Before drilling ensure that the area is clear of fuel, electrical & other components.
5. All holes drilled into the body panels shall have all burrs & swarf removed then coated with a suitable rust preventative paint.
6. For vehicles that require the bumper to be cut. Ensure cut out area is in correct position on the vehicle prior to cutting the bumper.
7. The high tensile fasteners supplied with this product were used to achieve the specified rating. If replacement is required ensure that fasteners of the same rating & quality are used. Contact an authorized **Trailboss** dealer if further information is required.
8. Ensure that all hardware is fastened to torque list below check fasteners on regular basis.
9. Tow bar load rating sticker provided with this product shall be conspicuously located on inside rear end of the driver's door. **(See diagram below).**
10. Trailboss recommends that you check your tow ball to ensure that it complies with the Australian standards **AS 4177.2.**
11. **PLEASE NOTE:** It is advised to remove your LUG or TBM when not actually towing so as to produce a clear view of the vehicles registration plate if obscured, and to also provide maximum available departure angle



Place load rating sticker
inside driver's door here

FOR TRAILER TOWING PURPOSES ONLY
For towing capacity details please refer to vehicle owner's manual or to the manufacturer. Overloading can void your warranties.

Tow bar Maintenance and Care.

Trailboss recommends that bolt torque's, as listed below, are routinely and regularly inspected and checked for correct tension. Replace any worn or defective parts.

We recommended to remove Tow Ball Mounts (TBM's, tongues or lugs) when not being used for any considerable length of time.

So as to avoid injury, when not towing it is suggested that the tongue, Pull Pin and R-clip are removed then stored in a safe, clean and dry place, away from excessive moisture.

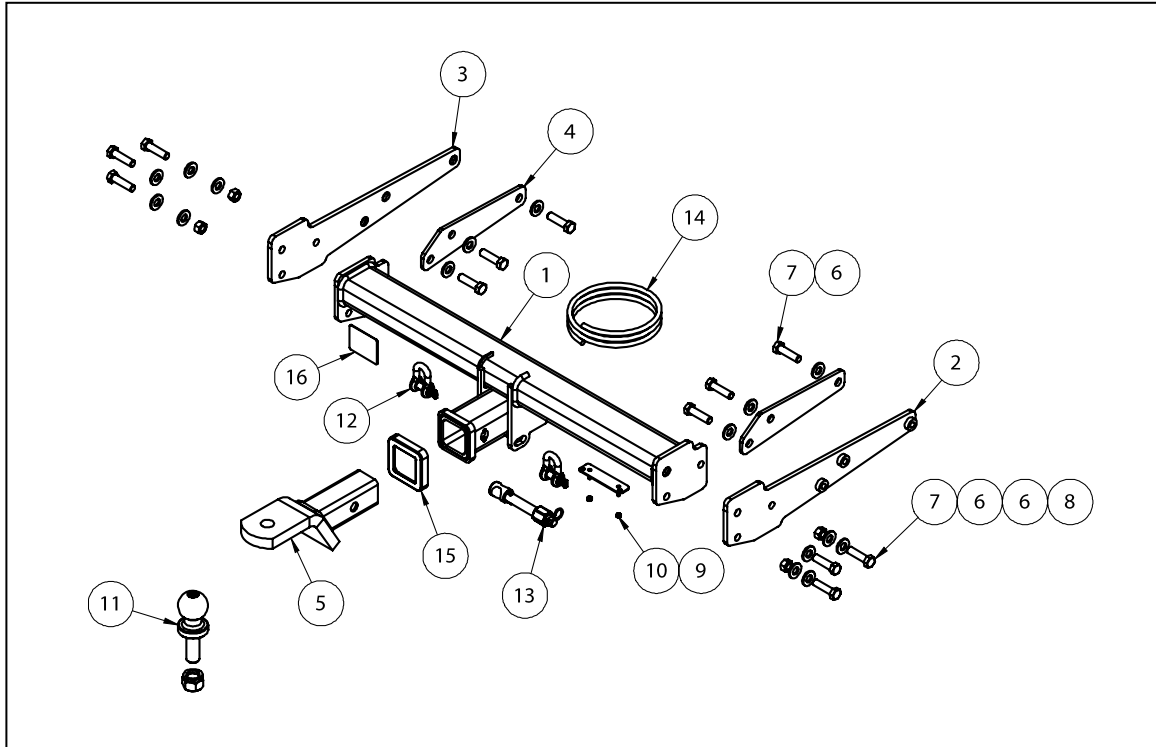
Hitch Pull Pins and spring "R" clips are regularly checked for proper installation. Replace any worn or defective parts.

Cequent Customer Service
Ph: 1800 812 017 Fax: 03 9898 3299
Email: info@cequent.com.au
Post: PO Box 4050, Dandenong South VIC 3175

TRAILBOSS

Towbar Fitting Instructions
 To Suit **VOLKSWAGEN TRANSPORTER T6 SERIES**
 Part Number **QTVW218L**
 Rating **2500/100 kg**

PLACE THESE INSTRUCTIONS IN THE VEHICLE'S GLOVEBOX AFTER INSTALLATION IS COMPLETED



ITEM NO.	DESCRIPTION	QTY.
1	WELDED ASSEMBLY	1
2	SIDE ARM RHS	1
3	SIDE ARM LHS	1
4	WASHER PLATE	2
5	CLASS 4 TBM	1
6	WASHER FLAT 1/2"x1 1/8"x1/8"	16
7	SET SCREW M12x45x1.25P G10.9	12
8	HEX NUT M12x1.25 PC8	4
9	PLUG BRACKET	1
10	NUT NYLOC M4-0.7 Z/P	2
11	50mm TOWBALL	1
12	10mm "D" SHACKLE	2
13	SILENT HITCH PIN-SILVER	1
14	VOLKSWAGEN TRANSPORTER T6 WIRING LOOM	1
15	HITCH BOX COLLAR COVER	1
16	ACRYLIC COMPLIANCE PLATE	1

Cequent Customer Service
 Ph: 1800 812 017 Fax: 03 9898 3299
 Email: info@cequent.com.au
 Post: PO Box 4050, Dandenong South VIC 3175



Towbar Fitting Instructions
To Suit **VOLKSWAGEN TRANSPORTER T6 SERIES**
Part Number **QTVW218L**
Rating **2500/100 kg**

PLACE THESE INSTRUCTIONS IN THE VEHICLE'S GLOVEBOX AFTER INSTALLATION IS COMPLETED

INSTRUCTION:

1. Release the tail gate to expose the rear cabin.
 2. Remove 2 x Torx Screws securing the tail light to the vehicle.
Repeat for opposite side.
- NOTE:** Once screws are removed push tail lights outwards.
3. Remove 2 x Push Rivets located on the top of the bumper where the tail light was previously.
Repeat for opposite side.
 4. On the inside of the wheel arch remove 2 x Torx Screws.
Repeat for opposite side.
 5. On the underside of the bumper and closest to the corner remove 1 x Screw and 1 Push Rivet.
Repeat for opposite side.
 6. Detach Factory Shipping Hook by removing 2 x Set Screws. Keep in a safe place for re-attachment.
 7. Remove spare tyre by lowering cradle.
 8. Detach spare wheel well under tray by removing 5 x Set Screws and 2 x Heat Shield clips. Keep under tray in a safe place for re-attachment.
 9. Carefully remove bumper by peeling away each corner. Keep in a safe place for re-attachment.
 10. Detach factory impact beam by removing 4 x Set Screws and 1 x Plastic nut. Keep in a safe place for re-assembly.
 11. On the factory impact beam, cut across 825mm from each chassis rail opening and 115mm up from the bottom edge. This will provide relief for the towbar and support for the bumper. Make sure to cut around mounting holes on the impact beam. Notch the top side of the impact beam as shown on the image to provide clearance for the towbar side arms.
 12. Install side arms into chassis rails and loosely secure using 3 x M12 x 1.25P G10.9 Set Screws with accompanying flat washers. Repeat for opposite side. Make sure the flat side of the side arm is contacting the inner wall of the chassis.
 13. Remove wax from mounting surfaces of chassis rail and re-attach fasteners with washer plate supplied on the inside face of the vehicle.
Repeat for opposite side of the vehicle.

Cequent Customer Service
Ph: 1800 812 017 Fax: 03 9898 3299
Email: info@cequent.com.au
Post: PO Box 4050, Dandenong South VIC 3175



Towbar Fitting Instructions
To Suit **VOLKSWAGEN TRANSPORTER T6 SERIES**
Part Number **QTVW218L**
Rating **2500/100 kg**

PLACE THESE INSTRUCTIONS IN THE VEHICLE'S GLOVEBOX AFTER INSTALLATION IS COMPLETED

14. Lower centre section of Towbar between side arms and loosely secure using 6 x M12 x 1.25P G10.9 with accompanying Flat Washers and Nuts.

Torque all fasteners to specifications listed below:

M12 x 1.25P x G10.9 : 125Nm

15. On the underside of the bumper, starting from the bottom edge, locate the centre. Cut 90mm up on the surface and 80mm across (40mm either side of the centre).
16. Mark out and drill 2x \varnothing 5mm holes 69mm apart on bumper skin to support plug bracket. Feed bracket threads through drilled holes prior to reinstalling bumper.
17. Re-attach bumper by following Steps 1-10 in reverse.

Cequent Customer Service
Ph: 1800 812 017 Fax: 03 9898 3299
Email: info@cequent.com.au
Post: PO Box 4050, Dandenong South VIC 3175



Wiring Loom Fitting Instructions
To Suit Volkswagen Transporter T6
Part Number 101422-WL (QTVW214L)

Wiring Loom Installation Instructions

Volkswagen Transporter T6

Part No: 101422-WL

Tail Harness Length Required: 1800mm

ECU Required: 04836

Power Harness: 04825 (supplied)

Wiring Loom Installation Time: Approx 45 Mins

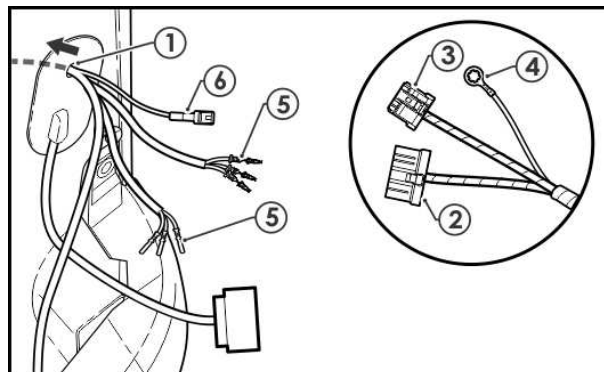
Important



Due to possible vehicle variations, always confirm any noted vehicle colour wires with a multi-meter to ensure the correct function is identified before soldering or scotch locking. For vehicle wires denoted with two colours (example; RED/GREEN) the first colour will always be the main wire colour while the second colour is the thinner trace colour on the wire.

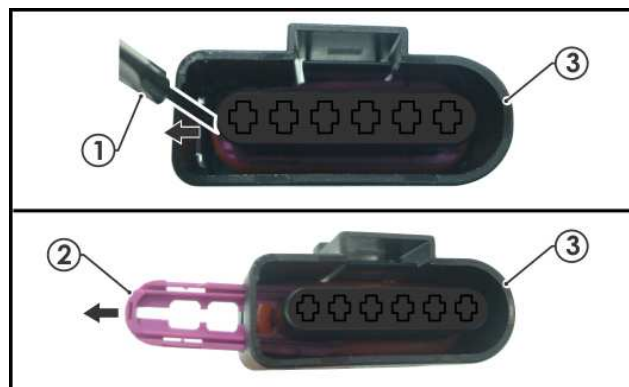
Wiring Loom Fitting Instructions To Suit Volkswagen Transporter T6 Part Number 101422-WL (QTVW214L)

1. Remove the LHS tail light trim by removing the two fasteners.
2. Remove the LHS tail light assembly by carefully releasing all the clips. **Repeat for RHS tail light assembly.**
3. Remove the cargo area RHS panel located above the wheel arch, by removing all the required scrivenets.
4. At the exterior RHS rear quarter area, remove the vent.
5. Locate the heat shield and carefully bend it down to allow for proper access to the vehicle grommet.
6. Locate and remove the vehicle grommet and drill a Ø30mm hole into the grommet hole. **Ensure the area being drilled into is clear of all obstructions before drilling. File down any rough edges and apply rust inhibitor (not supplied) after drilling.**
7. Pierce a hole through the vehicle RHS grommet (1) and route the trailer patch (P/No: 101422-WL) ECU connector (2), tail connector (3) and ground ring branches (4) through the pierced grommet (1). This will leave the trailer patch LHS and RHS terminals (5) and the 1-way power connector (6) at the exterior of the vehicle.



8. Locate the vehicle RHS black tail light connectors. Using a precision flat blade screw driver (1), slide out and then remove the secondary lock (2) from the connector (3).

Refer to the table in Step 10 to see the required terminals required to be backed out from the vehicle black connectors:

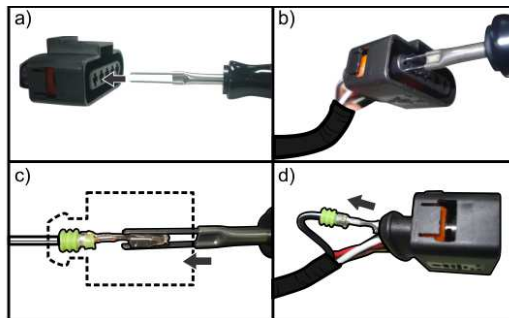


Wiring Loom Fitting Instructions To Suit Volkswagen Transporter T6 Part Number 101422-WL (QTVW214L)

- Unhouse the terminals by using a two pronged terminal de-housing tool (a). Push the tool all the way into the connector until it stops (b). This will allow the prongs to unlatch the terminal from the connector (c).
- Gently wiggle the terminal out until it is free (d). **Repeat for all terminals noted in the table below:**

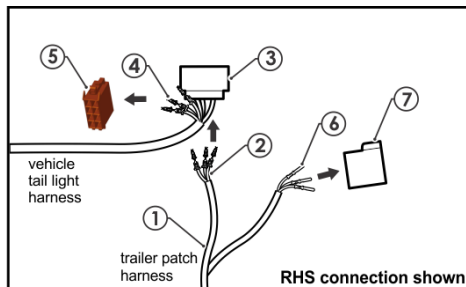
RHS	Function	Connector Wire	Terminal
	R.IND	BLACK / GREEN	2
	BRAKES	BLACK / RED	3
	CAR TAIL	GREY / RED	5

LHS	Function	Connector Wire	Terminal
	L.IND	BLACK / WHITE	6
	REVERSE	GREEN / BLACK	2

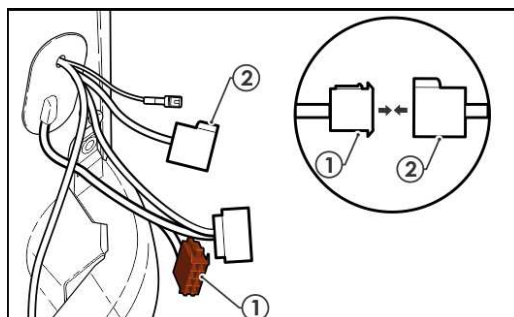


- Locate the RHS branch of the trailer patch (P/No: 101422-WL) (1) and house the three female terminals (2) into the black tail light connector's (3) previously backed out terminal locations. **Refer to table below:**
- House the black tail light connector's previously backed out terminals (4) into the supplied 8-way brown male connector (5). **Refer to table below for positions:**
- House the trailer patch (1) male terminals (6) to the supplied 8-way female brown connector (7). **Refer to table below for positions:**

Function	Trailer Wire	Connector Wire	Terminal
R.IND	GREEN / BLACK	BLACK / GREEN	2
BRAKES	RED / BLACK	BLACK / RED	3
CAR TAIL	BROWN / BLACK	GREY / RED	5

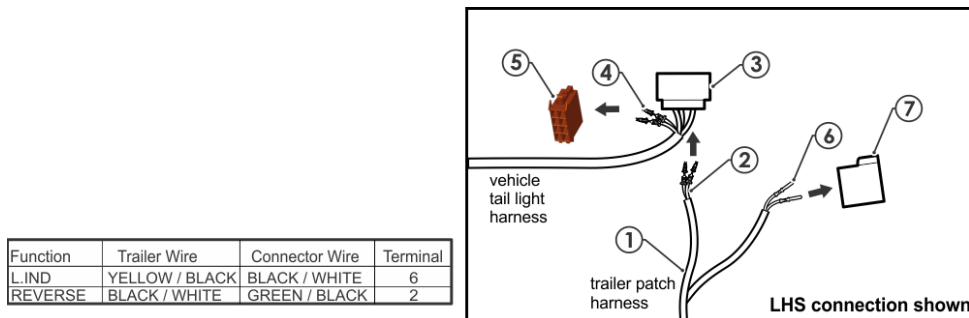


- Connect the 8-way brown male connector (1) to the 8-way brown female connector (2). **Ensure the connector wires matches up with the trailer wires as per the above table. Ensure to water-proof the rear of the connectors using electrical grease.**

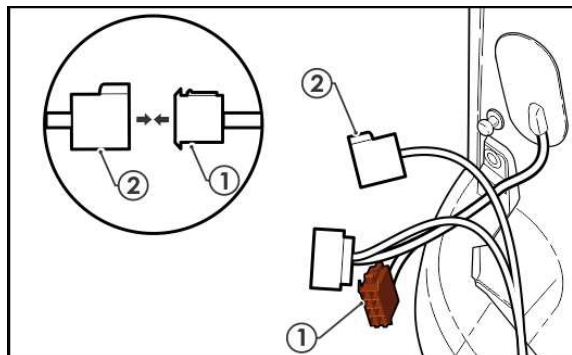


Wiring Loom Fitting Instructions To Suit Volkswagen Transporter T6 Part Number 101422-WL (QTVW214L)

15. In the RHS rear quarter sheet metal area, connect the trailer patch connector to the ECU (P/No: 04836). Remove the backing from the back of the ECU and mount the ECU onto the RHS cavity sheet metal area. **Ensure ECU connector is pointing downwards.**
16. Secure the trailer patch ground ring terminal to the vehicle grounding location nearby.
17. Route the trailer patch LHS branch through the bumper cavity area and across to the LHS tail light area.
18. **Repeat Steps 8 - 10 to de-house the LHS tail light connector.**
19. Locate the LHS branch of the trailer patch and house the two female terminals (2) into the black tail light connector's (3) previously backed out terminal locations. **Refer to table below:**
20. House the black tail light connector's previously backed out terminals (4) into the supplied 8-way brown male connector (5). **Refer to table below for positions:**
21. House the trailer patch (1) male terminals (6) to the supplied 8-way female brown connector (7). **Refer to table below for positions:**



21. Connect the 8-way brown male connector (1) to the 8-way brown female connector (2). **Ensure the connector wires matches up with the trailer wires as per the above table. Ensure to water-proof the rear of the connectors using electrical grease.**



23. In the engine bay, carefully route the power harness (1) down to the underside of the vehicle ensuring to keep the harness away from all sharp edges, moving parts or areas of extreme heat. **Do not connect the harness ring terminal to the power yet.**
24. Route the power harness (1) underneath the vehicle following the LHS chassis rail, towards the rear of the vehicle. At the RHS rear quarter area, route the power harness **above** the heat shield and towards the tail harness grommet (2). **Ensure the harness is routed away from sharp edges, moving parts and areas of extreme heat. Secure the harness with cable ties (not supplied).**



Wiring Loom Fitting Instructions
To Suit Volkswagen Transporter T6
Part Number 101422-WL (QTVW214L)

25. Route the power harness (P/No: 04825) through the RHS bumper cavity, up towards the tail light connectors.
26. Connect the trailer patch 1-way power connector to the power harness connector
27. At the rear exterior of the vehicle, mount the tail harness socket to the towbar mounting bracket using M4 fasteners (not supplied).
28. Connect the tail harness 8-way connector to the trailer patch 8-way mating connector.
29. Refit tail lights.
30. In the engine bay, secure the power harness ring terminal to the vehicle positive terminal.
31. Test the trailer harness function using a light board or multi-meter.
32. Secure all harnesses using cables ties (not supplied).
33. Re-fit all removed parts and secure all fasteners, ensuring there are no squeaks or rattles.
34. Place the instructions in the glove box after fitment.



FITTING INSTRUCTIONS

Silent Anti-Rattle Hitch Pin (PR0001)

• These fitting instructions are supplied to ensure understanding of how the HITCH PIN should be fitted and used correctly.

• Once installed, we recommend **ALL** instructions are kept and placed in the vehicle glove box.

NOTE: Routine maintenance and inspection of the towbar & HITCH PIN is required. Regularly inspect for wear and check the tightness of the Hitch Pin. Follow instructions below to retighten the nut when necessary.

***Do not tow with your vehicle if the R CLIP or the HITCH PIN is loose or missing. Replacement parts are available from your Pro Series Distributor.**

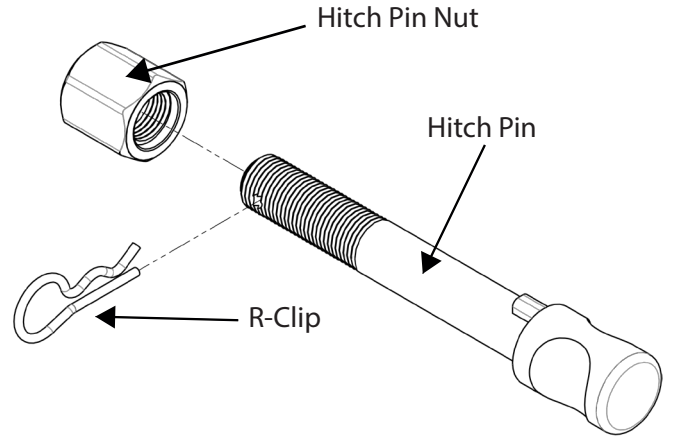


Fig 1. Silent Anti-Rattle Hitch Pin assembly

STEP 1

Insert Trailer Ball Mount (TBM) into towbar HITCHBOX, aligning hole in TBM SHANK with hole in HITCHBOX (Fig 2).

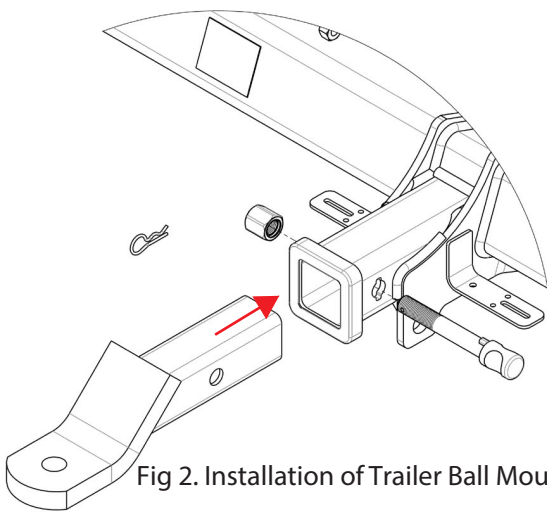


Fig 2. Installation of Trailer Ball Mount

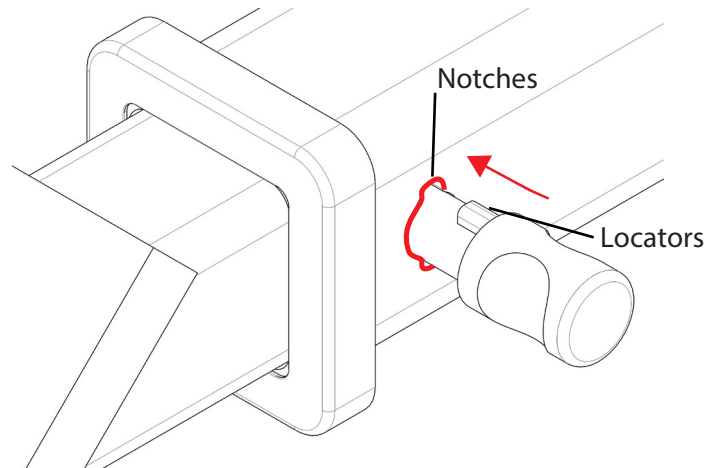


Fig 3. Silent Anti-Rattle Hitch Pin orientation

STEP 2

Insert HITCH PIN through hole in HITCHBOX and hole in TBM SHANK; ensure the LOCATORS are inserted into the NOTCHES in the HITCHBOX (Fig. 3).

STEP 3

Screw HITCH PIN NUT onto HITCH PIN ; tighten HITCH PIN NUT until finger tight, ensuring TBM is restrained from movement.

STEP 4

Tighten HITCH PIN NUT by turning nut a further 1/8th of a turn in the clockwise direction using a 24mm spanner (Fig. 4).

STEP 5

Install HITCH PIN R CLIP through the hole on the HITCH PIN (Fig. 1).

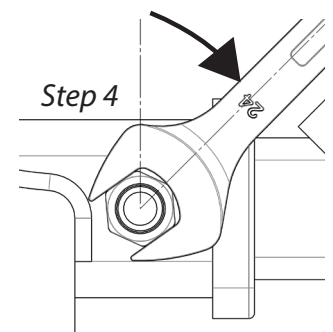


Fig 4. Tightening of Silent Anti-Rattle Hitch Pin Nut