

TRAILBOSS

Towbar Fitting Instructions
To Suit **ZX AUTO GRAND TIGER DIESEL WITH STEP 2013 ON**
Part Number **QTZA001L**
Rating **2000/180 kg**

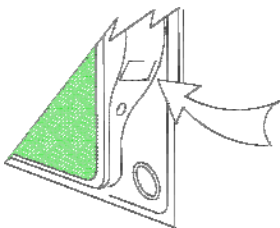
PLACE THESE INSTRUCTIONS IN THE VEHICLE'S GLOVEBOX AFTER INSTALLATION IS COMPLETED

WARNING:

1. Do not, drill, cut, weld or otherwise modify the tow bar.
2. If you are using electric welding on a motor vehicle, always check that the vehicle is not equipped with electronic engine or instrument management equipment. Failure to do so could destroy any onboard computers. If in doubt, check with the vehicle's manufacturer.
3. The high tensile fasteners supplied with this product were used to achieve the specified rating. If replacement is required ensure that fasteners of the same rating & quality are used. Contact an authorised Trailboss dealer if further information is required.
4. If TBM is used in inverted position tow ball may make contact with rear tailgate when lowered, which could cause damage.

General:

1. Ensure all hardware items have been included refer to assembly diagram.
2. It is recommended that the instructions are read through and completely understood before making any attempt to fit this product.
3. Be wary of any changes to vehicle designs or other accessories that may conflict with the installation of this product.
4. Before drilling ensure that the area is clear of fuel, electrical & other components.
5. All holes drilled into the body panels shall have all burrs & swarf removed then coated with a suitable rust preventative paint.
6. For vehicles that require the bumper to be cut. Ensure cut out area is in correct position on the vehicle prior to cutting the bumper.
7. The high tensile fasteners supplied with this product were used to achieve the specified rating. If replacement is required ensure that fasteners of the same rating & quality are used. Contact an authorized Trailboss dealer if further information is required.
8. Ensure that all hardware is fastened to torque list below check fasteners on regular basis.
9. Tow bar load rating sticker provided with this product shall be conspicuously located on inside rear end of the driver's door. (See diagram below).
10. Trailboss recommends that you check your tow ball to ensure that it complies with the Australian standards AS 4177.2.
11. PLEASE NOTE: It is advised to remove your lug or tbn when not actually towing so as to produce a clear view of the vehicles registration plate if obscured, and to also provide maximum available departure angle
12. Pull Pin must be fit in down position.



Place load rating sticker
inside driver's door here

FOR TRAILER TOWING PURPOSES ONLY
For towing capacity details please refer to vehicle owner's
manual or to the manufacturer. Overloading can void your
warranties.

Tow bar Maintenance and Care.

Trailboss recommends that bolt torque's, as listed below, are routinely and regularly inspected and checked for correct tension. Replace any worn or defective parts.

We recommended to remove Tow Ball Mounts (TBM's, tongues or lugs) when not being used for any considerable length of time.

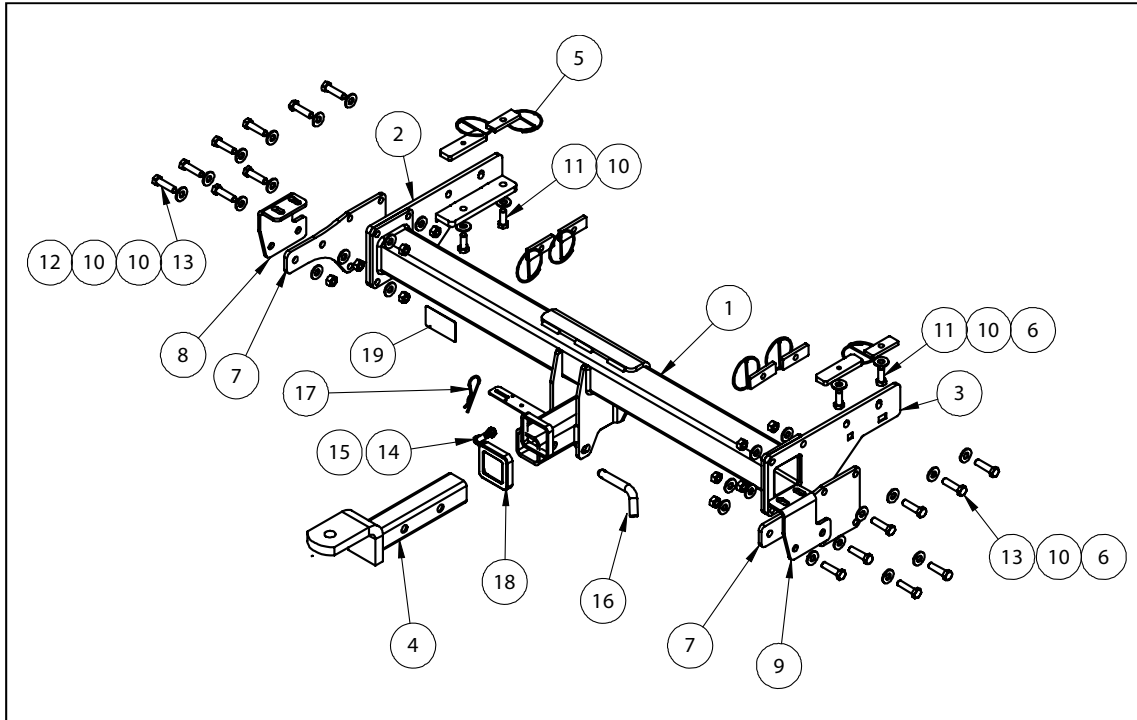
So as to avoid injury, when not towing it is suggested that the tongue, Pull Pin and R-clip are removed then stored in a safe, clean and dry place, away from excessive moisture.

Hitch Pull Pins and spring "R" clips are regularly checked for proper installation. Replace any worn or defective parts.

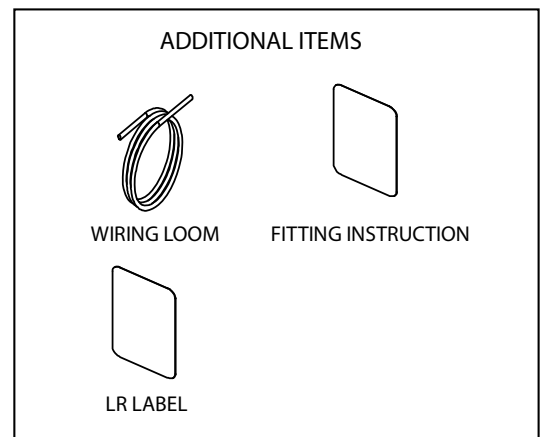
TRAILBOSS

Towbar Fitting Instructions
 To Suit **ZX AUTO GRAND TIGER DIESEL WITH STEP 2013 ON**
 Part Number **QTZA001L**
 Rating **2000/180 kg**

PLACE THESE INSTRUCTIONS IN THE VEHICLE'S GLOVEBOX AFTER INSTALLATION IS COMPLETED



QTY	DESCRIPTION	ITEM NO
1	TOWBAR ASSY	1
1	LHS END PLATE ASSEMBLY	2
1	RHS END PLATE ASSY	3
1	CLASS 4 TBM	4
2	M12 FITTING PLATE WITH 300mm WIRE	5
6	FITTING PLATE M12x1.25P	6
2	TOWBAR STEP MOUNT BRACKET	7
1	LHS STEP SUPPORT PLATE	8
1	RHS STEP SUPPORT PLATE	9
32	WASHER FLAT M12	10
4	M12x30x1.25P BOLT	11
12	M12x1.25P HEX NUT	12
16	SET SCREW M12x45x1.25P	13
1	SET SCREW M10x30x1.5P	14
1	HEX NUT M10x1.5P	15
1	PULL PIN	16
1	R CLIP	17
1	HITCH BOX COLLAR COVER	18
1	ACRYLIC CP LABEL	19





Towbar Fitting Instructions
To Suit **ZX AUTO GRAND TIGER DIESEL WITH STEP 2013 ON**
Part Number **QTZA001L**
Rating **2000/180 kg**

PLACE THESE INSTRUCTIONS IN THE VEHICLE'S GLOVEBOX AFTER INSTALLATION IS COMPLETED

INSTRUCTION:

1. Disconnect the step light Connector, brake light connector and parking sensor from the Rear Step.
2. Slide the Rear Step out of the Chassis Rail by removing the 2x M12 Bolts from both RHS and LHS of the vehicle.
3. Discard of the original step mounts from the step by removing all 4x M12 Bolts.
Keep the original Nuts.
4. Drill out the most forward into the vehicle Pilot Hole, LHS and RHS, located underneath the Chassis Rail using a 13mm drill bit.
5. Loosely secure the Towbar Sidearms to the outside of the Chassis Rail using 2x M12 Bolts, Washers and Taped Plates on both sides of the vehicle.
6. Loosely secure the vertical mounting points of the Sidearms using 2x M12 Bolts, Washers, one M12 long Taped Plate for the most rearward mounting point and an M12 Taped Plate for the most forward mounting point.
7. Offer the main Towbar assembly to the vehicle and slot into the Sidearms.
8. Loosely secure the Towbar step mount bracket to the Sidearms using 4x M12 Bolts, Washers and M12 Nuts on both sides of the Towbar.
9. Loosely secure the Step Brackets on both sides of the vehicle using 2x M12 Bolts, Washers and Nuts.
10. Torque all bolts to the following:
 - **8 x M12 Bolts through Side arms and Towbar centre section to 93Nm.**
 - **4 x M12 Bolts through Sidearms and Chassis Rail to 93Nm (vertical).**
 - **4 x M12 Bolts through Sidearms and Chassis Rail to 93Nm (horizontal).**
 - **4 x M12 Bolts through Step Bracket and Step mount Bracket to 93Nm.**
11. Mount the step back onto the vehicle using the Step Brackets. Secure the Step to the Brackets with the original M12 Nuts. Reconnect all light connectors, brake light connectors and parking sensors from step 1.
12. Please note the following:
 - **4x2 and 4x4 Dual Cab, trailer ball mount is to be mounted in the UP position.**
 - **For Dual Cab, use the most rearward pull pin hole to secure the Tow ball mount to the Hitchbox.**



Wiring Loom Fitting Instructions
To Suit ZX Auto Grand Tiger MY12
Part Number 100772-WL

Wiring Loom Installation Instructions

ZX Auto Grand Tiger MY12
Part No: 100772-WL

Tail Harness Length Required: 1200mm

Wiring Loom Installation Time: Approx 20 Mins



Wiring Loom Fitting Instructions
To Suit ZX Auto Grand Tiger MY12
Part Number 100772-WL

1. On the rear of the vehicle, locate the LHS 6-way tail light connector.
2. Disconnect the 6-way tail light connectors and connect the trailer harness (100772-WL) connector in between.
3. Route the trailer harness along the rear chassis towards the RHS of the vehicle.
4. On the RHS of the vehicle, disconnect the 6-way tail light connectors and connect the trailer harness connectors in between.
5. Mount the trailer socket to the tow bar mounting bracket using M4 fasteners (not supplied).
6. Route the tail harness across the tow bar towards its 8-way mating connector.
7. Connect the tail harness (tail length 1200mm) 8-way connector to the trailer patch mating 8-way connector.
8. Test the trailer patch function using a light board or multi meter.
9. Secure all harnesses using cable ties (not supplied).
10. Re-fit all removed parts and secure all fasteners, ensuring there are no squeaks or rattles.
11. Place the fitting instructions in the glove box after fitment.