



Towbar Fitting Instructions  
To Suit Toyota Yaris 3 & 5 Door 11-2005-on  
Part Number TT146  
Rating 700 kg

**WARNING:**

1. Do not, drill, cut, weld or otherwise modify the tow bar.
2. If you are using electric welding on a motor vehicle, **always** check that the vehicle is not equipped with electronic engine or instrument management equipment. Failure to do so could **destroy** any onboard computers. If in doubt, check with the vehicle's manufacturer.
  
1. Ensure all hardware items have been included.
2. Remove rear bumper bar skin via.
  - a. Remove 4 plastic trim buttons from lower lip of bumper bar.
  - b. Remove 2 bolts from holding bumper from under hatch lid.
3. Remove bumper bar by pulling outward at each wheel arch and rearward from under each tail light cavity assembly.
4. Disconnect number plate light lead.
5. Remove then discard impact beam from rear of the vehicle.
6. Drill out captive bushes shown in fig 1 to 10.5mm in six places
7. Be sure to coat all raw edges with a suitable anti rust treatment.
8. Offer tow bar to rear of the vehicle so as to align holes in side plates with previously drilled captive nuts.
9. Fasten loosely with hardware supplied as per diagram on the next page.
10. Tighten all bolts to torque listing below.
11. Refit the bumper bar skin in the reverse of steps 4 through to 2.

**NOTE:** Trailboss recommends that you check your towball to ensure it complies with the Australian standard AS 4177.2.

**RECOMMENDED ASSEMBLY TORQUE LISTING**

**Diameter Grade 8.8 Bolt**

	Nm;
M6	9.5
M8	21.7
M10	43.4
M12	77.3
M16	189.8

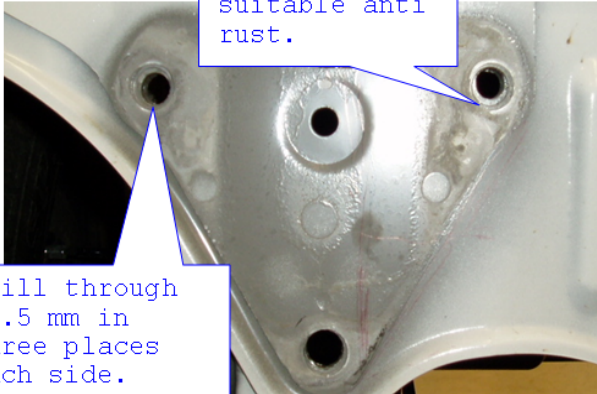
**FOR TOWING PURPOSES ONLY**  
For towing capacity details please refer to vehicle owner's manual or to the manufacturer. Overloading can void your warranties.

# TRAILBOSS

## Towbar Fitting Instructions To Suit Toyota Yaris 3 & 5 Door 11-2005-on Part Number TT146 Rating 700 kg

**FIG 1**

Coat all raw edges with suitable anti rust.



Drill through 10.5 mm in three places each side.

**FIG 2**

Place bolts & flat washers through from the rear as shown before fitting the bar.

