

TRAILBOSS

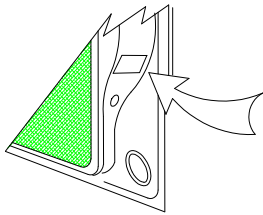
Tow bar Fitting Instructions To Suit Toyota Corolla Sedan 5-2007-on Part Number TT152 Rating 1300 kg

WARNING:

1. Do not, drill, cut, weld or otherwise modify the tow bar.
2. If you are using electric welding on a motor vehicle, **always** check that the vehicle is not equipped with electronic engine or instrument management equipment. Failure to do so could **destroy** any onboard computers. If in doubt, check with the vehicle's manufacturer.

General:

1. Ensure all hardware items have been included
2. It is recommended that the instructions are read through and completely understood before making any attempt to fit this product.
3. Be wary of any changes to vehicle designs or other accessories that may conflict with the installation of this product.
4. Before drilling ensure that the area is clear of fuel, electrical & other components.
5. All holes drilled into the body panels shall have all burrs & swarf removed then coated with a suitable rust preventative paint.
6. The high tensile fasteners supplied with this product were used to achieve the specified rating. If replacement is required ensure that fasteners of the same rating & quality are used. Contact an authorized **Trailboss** dealer if further information is required.
7. Ensure that all hardware is fastened to torque list below check fasteners on regular basis.
8. Towbar load rating sticker provided with this product shall be conspicuously located on inside rear end of the driver's door (**See diagram below**).
9. Trailboss recommends that you check your tow ball to ensure that it complies with the Australian standards **AS 4177.2**.
10. **PLEASE NOTE:** It is advised to remove your lug or tbn when not actually towing so as to produce a clear view of the vehicles registration plate if obscured, and to also provide maximum available departure angle



Place load rating sticker
inside driver's door here

FOR TOWING PURPOSES ONLY

For towing capacity details please refer to vehicle owner's manual or to the manufacturer. Overloading can void your warranties.

RECOMMENDED ASSEMBLY TORQUE LISTING

<u>Diameter</u>	<u>Grade 8.8 Bolt</u>
M6	9.5 Nm
M8	21.7 Nm
M10	43.4 Nm
M12	77.3 Nm
M16	189.8 Nm

Tow bar Maintenance and Care.

Trailboss recommends that bolt torque's, as listed below, are routinely and regularly inspected and checked for correct tension. Replace any worn or defective parts.

We recommended to remove Tow Ball Mounts (TBMs, tongues or lugs) when not being used for any considerable length of time.

So as to avoid injury, when not towing it is suggested that the tongue, Pull Pin and R-clip are removed then stored in a safe, clean and dry place, away from excessive moisture.

Hitch Pull Pins and spring "R" clips are regularly checked for proper installation. Replace any worn or defective parts.

Tow bar Fitting Instructions To Suit Toyota Corolla Sedan 5-2007-on Part Number TT152 Rating 1300 kg

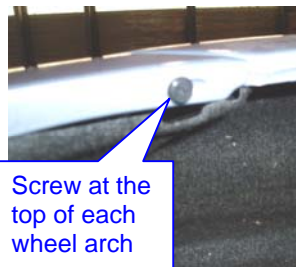
11. Remove rear bumper bar skin via

- 2 x plastic trim buttons from underside of bumper bar skin see fig 1.
- 2 screws at the top of each wheel arch see fig 2.
- 2 x M8 bolts inside rear boot cavity see fig 3.
- 2 x plastic trim plugs on the underside of the bumper each wheel arch see fig 4.
- Remove shipping hook on the passenger side chassis rail if fitted.
- Remove mud flaps from each wheel arch if fitted.
- Caution:** two person lift required to remove bumper bar.
- Flex out bumper bar skin at the sides then pull bumper bar skin rearwards to remove.
- Caution:** some force may be required to remove.

2 x plastic trim buttons from underside of bumper



Fig 1



Screw at the top of each wheel arch

Fig 2

2 x M 6 screws in rear boot cavity.

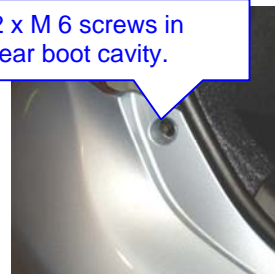


Fig 3

2 x plastic trim plugs underneath bumper



Fig 4

12. Fitment of tow bar to vehicle via

- Offer tow bar to underside of chassis rails so that holes align with captive holes on underside of chassis rails.
- Fit six M12 x 1.25 pitch bolts, spring & flat washers provided loosely. Once all fasteners are fitted, fasten to torque listing.
- Cut the rear bumper bar skin as per instructions fig 5 bumper cut diagram.
- Refit the bumper bar in the reverse of steps 11f through to 11a.

Measure out as shown from centre of bumper tag & bottom edge of bumper bar.

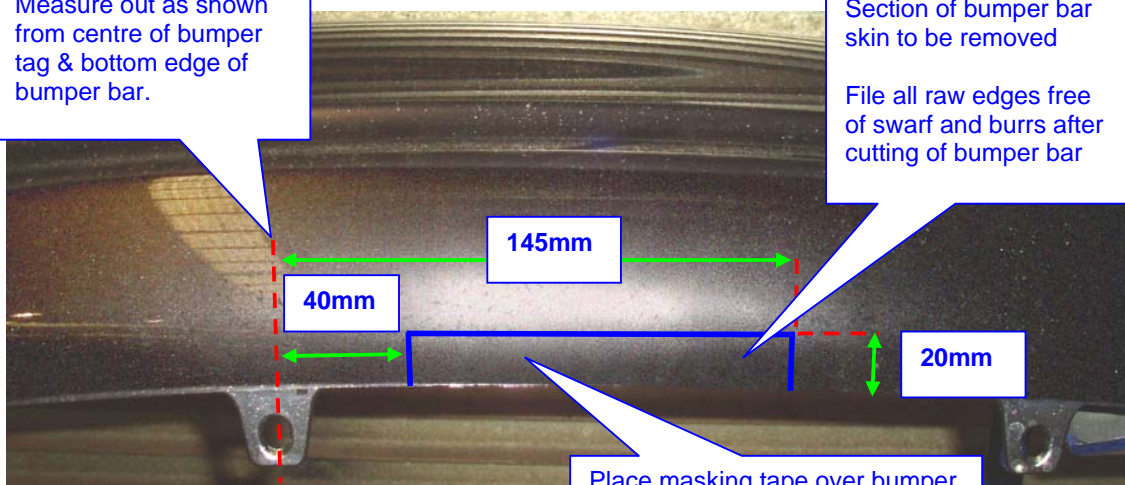


Fig 5

Tow bar Fitting Instructions
To Suit Toyota Corolla Sedan 5-2007-on
Part Number TT152
Rating 1300 kg

