

# TRAILBOSS

## Towbar Fitting Instructions To Suit **VW POLO 2013 - ON** Part Number **VW22L** Rating **1000/50 kg**

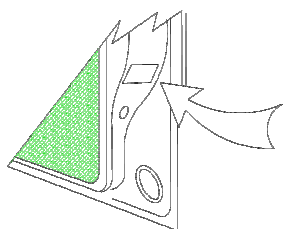
PLACE THESE INSTRUCTIONS IN THE VEHICLE'S GLOVEBOX AFTER INSTALLATION IS COMPLETED

### **WARNING:**

1. Do not, drill, cut, weld or otherwise modify the tow bar.
2. If you are using electric welding on a motor vehicle, **always** check that the vehicle is not equipped with electronic engine or instrument management equipment. Failure to do so could **destroy** any onboard computers. If in doubt, check with the vehicle's manufacturer.
3. The high tensile fasteners supplied with this product were used to achieve the specified rating. If replacement is required ensure that fasteners of the same rating & quality are used. Contact an authorised **Trailboss** dealer if further information is required.

### **General:**

1. Ensure all hardware items have been included refer to assembly diagram.
2. It is recommended that the instructions are read through and completely understood before making any attempt to fit this product.
3. Be wary of any changes to vehicle designs or other accessories that may conflict with the installation of this product.
4. Before drilling ensure that the area is clear of fuel, electrical & other components.
5. All holes drilled into the body panels shall have all burrs & swarf removed then coated with a suitable rust preventative paint.
6. For vehicles that require the bumper to be cut. Ensure cut out area is in correct position on the vehicle prior to cutting the bumper.
7. The high tensile fasteners supplied with this product were used to achieve the specified rating. If replacement is required ensure that fasteners of the same rating & quality are used. Contact an authorized **Trailboss** dealer if further information is required.
8. Ensure that all hardware is fastened to torque list below check fasteners on regular basis.
9. Tow bar load rating sticker provided with this product shall be conspicuously located on inside rear end of the driver's door. **(See diagram below).**
10. Trailboss recommends that you check your tow ball to ensure that it complies with the Australian standards **AS 4177.2.**
11. **PLEASE NOTE:** It is advised to remove your lug or tbm when not actually towing so as to produce a clear view of the vehicles registration plate if obscured, and to also provide maximum available departure angle
12. Pull Pin must be fit in down position.



Place load rating sticker  
inside driver's door here

**FOR TRAILER TOWING PURPOSES ONLY**  
For towing capacity details please refer to vehicle owner's manual or to the manufacturer. Overloading can void your warranties.

#### RECOMMENDED ASSEMBLY TORQUE LISTING

Diameter	Grade 8.8 Bolt
M6	9.5 Nm
M8	21.7 Nm
M10	43.4 Nm
M12	77.3Nm
M14	146 Nm
M16	189.8 Nm

### **Tow bar Maintenance and Care.**

Trailboss recommends that bolt torque's, as listed below, are routinely and regularly inspected and checked for correct tension. Replace any worn or defective parts.

We recommended to remove Tow Ball Mounts (TBM's, tongues or lugs) when not being used for any considerable length of time.

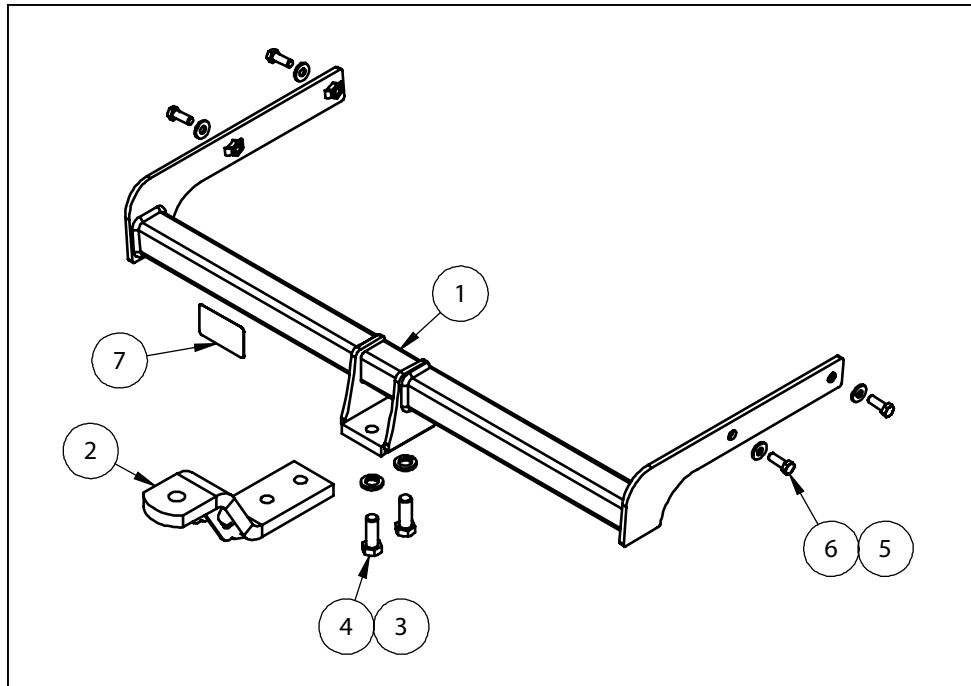
So as to avoid injury, when not towing it is suggested that the tongue, Pull Pin and R-clip are removed then stored in a safe, clean and dry place, away from excessive moisture.

# TRAILBOSS

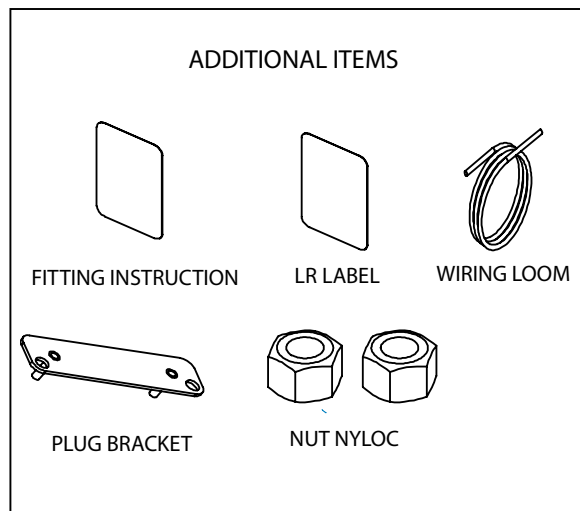
Towbar Fitting Instructions  
 To Suit **VW POLO 2013 - ON**  
 Part Number **VW22L**  
 Rating **1000/50 kg**

PLACE THESE INSTRUCTIONS IN THE VEHICLE'S GLOVEBOX AFTER INSTALLATION IS COMPLETED

Hitch Pull Pins and spring "R" clips are regularly checked for proper installation. Replace any worn or defective parts.



QTY	DESCRIPTION	ITEM NO
1	VW POLO WELDED ASSEMBLY	1
1	CLASS 2 TONGUE	2
2	M16 SPRING WASHER	3
2	M16x45 2.0P BOLT	4
4	M10 FLAT WASHER	5
4	M10x30x1.5P SET SCREW	6
1	ACRYLIC CP LABEL	7



# TRAILBOSS

Towbar Fitting Instructions  
To Suit **VW POLO 2013 - ON**  
Part Number **VW22L**  
Rating **1000/50 kg**

PLACE THESE INSTRUCTIONS IN THE VEHICLE'S GLOVEBOX AFTER INSTALLATION IS COMPLETED

## INSTRUCTION:

1. Remove 2x Screws on the inside edge of wheel arch and 1x Screw from the top corner of Bumper to rear guard on both sides.
2. Remove 5x Screws from underside of rear Bumper.
3. Release clips on the sides of the Bumper by pulling firmly.
4. Remove rear light assembly by first unscrewing plastic knob located behind access hatch in carpet panel inside the boot.
5. At this point you can remove the rear Bumper by pulling firmly to release clips along the top of the Bumper.

After removing the Bumper unbolt Impact Beam and discard.

6. Insert side arms into Chassis Rails and bolt into factory holes in chassis using 4x M10x30 Bolts & M10 Flat Washers provided.

Torque all bolts to setting provided on Page: 1

7. Cut out a section of the lower edge of the Bumper 150mm X 85mm.

Make sure the cut is in the centre of the bumper.

Re-fit bumper and all components in reverse order.





Wiring Loom Fitting Instructions  
To Suit Volkswagen Polo  
Part Number 100965-WL

**Wiring Loom Installation Instructions**

**Volkswagen Polo**  
**Part No: 100965-WL**  
**ECU Required: 04829**

**Tail Harness Length Required: 1800mm**

**Wiring Loom Installation Time: Approx 45 Mins**

## Wiring Loom Fitting Instructions To Suit Volkswagen Polo Part Number 100965-WL

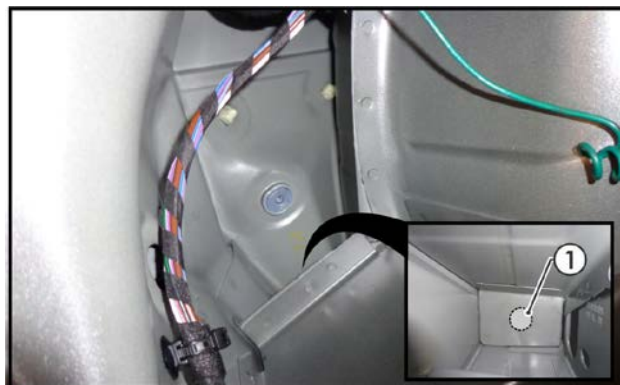
1. In the luggage compartment, remove the parcel shelf and the floor carpet cover.
2. Remove the rear luggage compartment trim by pulling in an upwards direction.
3. Fold down the rear passenger seats forward and remove the four fasteners.
4. On the LHS of rear passenger side, remove the door trim.

**Repeat Step 4 for the RHS.**

5. On the LHS luggage compartment trim, remove the three screws.
6. Remove the LHS luggage compartment trim.

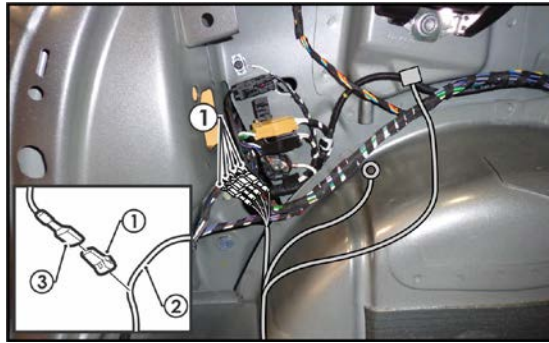
**Repeat Step 5 & 6 for the RHS.**

7. On the RHS of the rear passenger side, remove the door trim.
8. Dislodge the RHS 'B' pillar trim.
9. On the RHS of the driver's side, remove the door trim.
10. Dislodge the kick panel trim.
11. Remove the fuse panel cover.
12. On the LHS of the luggage compartment rear quarter panel, remove the existing vehicle grommet and drill out the hole to Ø30mm (1).
13. File any rough or sharp edges and spray with rust inhibitor.



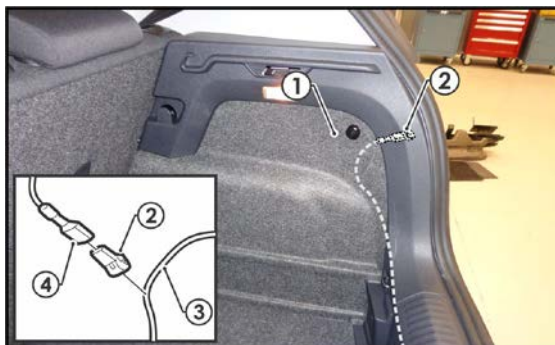
## Wiring Loom Fitting Instructions To Suit Volkswagen Polo Part Number 100965-WL

14. On the LHS of the luggage compartment, following the table below, connect the ezy-taps (1) to the corresponding wires (2), then connect the ezy-taps (1) to the terminals (3).



Function	Trailer Patch	Vehicle Connector
L.IND	YELLOW / BLACK	BLACK / WHITE
REVERSE	BLACK / WHITE	BLACK / BLUE
TAIL	BROWN / BLACK	WHITE / BLACK
BRAKES	RED / BLACK	WHITE

15. Connect the trailer patch ground ring terminal to the existing vehicle grounding point.
16. Connect the trailer patch 12-way connector to the ECU.
17. Apply double sided tape to the ECU and secure it to the vehicle sheet metal on the LHS of the luggage compartment in a suitable location.
18. Route the trailer patch towards the RHS of the vehicle.
19. Remove the RHS luggage compartment access panel.
20. On the RHS of the luggage compartment, following the table below, connect the ezy-tap (2) to the corresponding wire (3), then connect the ezy-tap (2) to the terminal (4).



Function	Trailer Patch	Vehicle Connector
R.IND	GREEN / BLACK	BLACK / GREEN

# TRAILBOSS

## Wiring Loom Fitting Instructions To Suit Volkswagen Polo Part Number 100965-WL

21. Route the trailer patch power harness along the RHS of the luggage compartment towards the rear passenger seat.
22. Route the trailer patch power harness along the existing vehicle harness, past the 'B' pillar towards the front of the vehicle.
23. Continue routing the trailer patch power harness along the existing vehicle harness, past the kick panel and towards the fuse box.
24. Inside the fuse box, locate the vacant 'F43' slot (1).
25. Insert the supplied 20Amp (2) fuse into the upper slot of the add-a-fuse harness (3).
26. Plug the add-a-fuse harness (3) into the vacant 'F43' slot (1) on the fuse panel.
27. Connect the 'ORANGE' power wire 1-way connector (4) into the add-a-fuse harness mating connector (5).



28. Mount the tail harness socket to the towbar mounting bracket using M4 fasteners (not supplied).
29. Route the tail harness towards the LHS, up through the previously drilled grommet hole.
30. Ensure the tail harness grommet is seated correctly and secured in place using a cable tie (not supplied).
31. Connect the tail harness (tail length 1800mm) 8-way connector to the trailer harness mating 8-way connector.



Wiring Loom Fitting Instructions  
To Suit Volkswagen Polo  
Part Number 100965-WL

32. Test the trailer harness function using a light board or multimeter.
33. Secure all harnesses using cable ties (not supplied).
34. Re-fit all removed parts and secure all fasteners, ensure there are no squeaks or rattles.
35. Place instructions in glove box after fitment.